

## Crains wins Cumberland Co. plowing contest



Cumberland County Plowing Contest winners include (L. to R.) - Bill McCulloch, RD6, Shippensburg, Large Plow Level Land Contest Winner; Gary Crain, RD2, Mechanicsburg, Small Plow Level Land Contest Winner and Bill Crain, RD2, Mechanicsburg, Contour Contest Winner.

SHIPPENSBURG — Bill Crain of RD2, Mechanicsburg, and his son won two divisions of the Cumberland County Plowing Contest, August 2. Bill Crain using his John Deere 630 Tractor pulling John Deere F-130 plows won the Contour Plowing Contest. Later the same day using the same tractor and set of plows his son Gary won the Small Plow level land contest.

Bill McCulloch, RD6, Shippensburg, with a John Deere 4230 Diesel Tractor and a John Deere 2600 set of plows won the Large Plow level land contest. Ted Wiser, RD1, Shippensburg, won second honor using an International 766 Tractor pulling a set of 760

Automatic International plows.

Jay Stoner of 124 Locust St., Mechanicsburg, placed second in the Contour division using an Oliver set of plows and a Model W-D Allis Chalmers Tractor.

Robert Holtry, RD6, Carlisle, placed second in the Small Plow level land division using an Allis Chalmers Tractor and a set of Trailing Oliver plows.

The Plowing Contests

were held at a farm operated by Thrush Bros. located near Shippensburg.

The winners in all three divisions will compete at the State level August 16th. The State Contest will be held at the Milton Hershey Farm #6B which is located 2½ miles Northeast of Hershey. The event will be held from 9:00 A.M. to 3:00 P.M. The State Plowing Contest is held in conjunction with an Energy Conservation Fair.

*Dairy*  
for the Good Taste

### You get more than money, you get the services of a friend at National Central Bank.

National Central Bank believes that agriculture is the backbone of America — that the family farm is the cornerstone of agriculture in our area. That's why one of the bank's primary objectives is to serve — and help preserve — the family farm. That's why National Central Bank has developed an entire range of financing, credit, trust and estate services. And our National Central manager extends these services — right to your home. You probably know your National Central Manager already — he's a neighbor, a friend. He knows that with the value of farm production

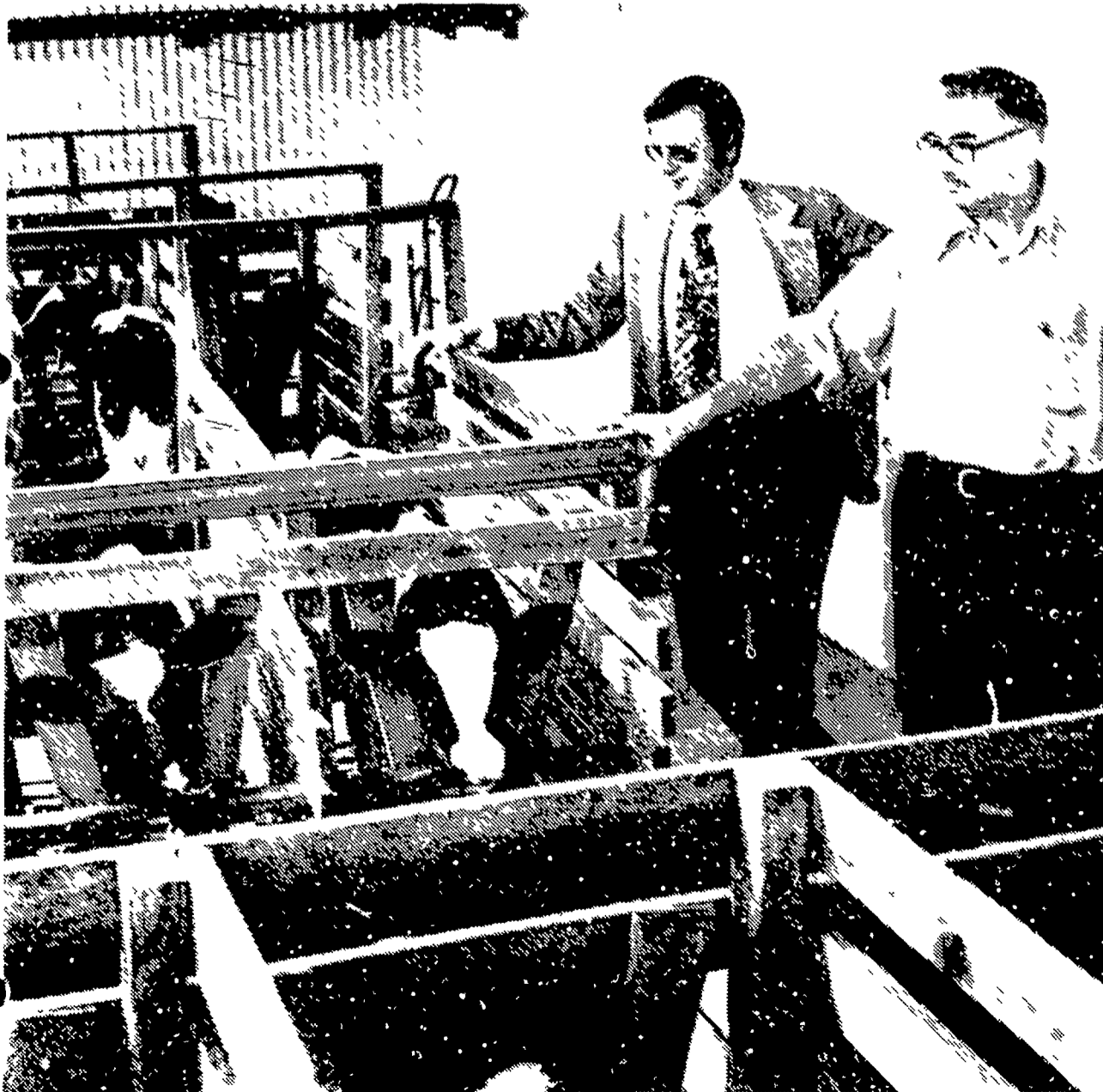
rising every year the need for capital goes up with it. And the need for sound financial planning rises, too. He'll sit down with you, in your home, and discuss the full range of services that we've designed to help you meet your obligations now, and help you increase what you have to pass on to the next generation. Your National Central manager will work with you in a relationship of mutual trust, and help keep your family farm secure and productive. If you believe that agriculture is still the backbone of America, talk to your friend at National Central Bank. You'll find he feels the same way.

**NATIONAL CENTRAL BANK**



Member FDIC Federal Reserve System

Harold J. Cooper 1856 Farmington Ave Pottstown, with Larry A. Rush, Manager, Boyertown Office



**QUALITY!**

**Badger**



### Badger Forage Box

Quality-of-design, materials and craftsmanship — make Badger one of the longest-lasting, smoothest-running forage boxes money can buy. They get the crops from the field fast, without costly downtime. Put a team of Badger boxes to work for you!

- Models up to 16-foot long, 700 cu. ft. capacity
- "Walking Tandem" 10-ton gear
- All-steel frame
- Exterior grade plywood
- Multi-speed unloading

— We've earned our stripes! —

**Badger**

**SEE YOUR LOCAL BADGER DEALER**

**ALLEN ZEIGLER**

RD 1  
Lehigh, PA 18235  
(717) 386-4593

**ROY CHRISTMAN**

RD 1  
Hamburg, PA 19526  
(215) 562-7218

**PIKEVILLE EQUIPMENT INC.**

RD 2  
Oley, PA 19547  
(215) 987-6277

**HUTTON FARM EQUIPMENT**

Mahaffey, PA 17575  
814-277-5504

**GRUMELLI'S FARM SERVICE**

Mechanics Grove  
Quarryville, PA 17566  
(717) 786-7318

**SHOW-EASE STALL CO.**

523 Willow Rd  
Lancaster, PA 17601  
(717) 299-2536

**HEISEY FARM EQUIPMENT INC.**

RD 1  
Jonestown, PA 17038  
(717) 865-4526

**LLOYD E. KREIDER CO.**

RD 1  
Cochranville, PA 19330  
(215) 932-4700

**CECIL DAIRY SERVICE**

RD 1 Rt 274  
1/2 Mi. South Rising Sun, MD 21911  
(301) 658-6923