

Public Sales Register

Closing Date - Monday, 5:00 P.M.
of each week's publication

THURS., AUG. 30 - 10:00 A.M.
C.H. Wolgemuth & Sons. Fall Farm Equipment Sale. Held at the place of business, 4 miles west of East Fairview Brethren Church on Valley Rd., just off Hosler Rd., 10 minutes from Rt. 283 and 15 minutes from PA Turnpike Ext 20. Clyde Wolgemuth, Sale Manager.

FRI. AUG. 31 - Lebanon Co. Holstein Club bred heifer sale. To be held at the Lebanon Area Fairgrounds, Lebanon, PA. Harry Bachman Auctioneer.

SEPTEMBER

SAT., SEPT. 1 - Public Sale of 113 acre farm and farm implements. Located 2 miles north of Stroudsburg, Berks Co., PA. Susan Stamm Estate. Copenhaver and Weik auctioneers.

SAT., SEPT. 1 - 10 A.M. Public Sale of Real Estate, Antiques, & Household Goods. Located Rt. 897 between Terre Hill & Blue Ball, Pa. Terms by Phares M. Horst. Auctioneers LeRoy S & Paul W. Horst.

SAT., SEPT. 1 - 12:00 P.M. PA 1st Performance Test Rair Lamb and Invitational Ewe Sale. Held at the Meat Animal Evaluation Center, 651 Fox Hollow Rd., State College, PA (Next to Penn State Football Stadium). Sponsored by PA Dept. of Agriculture in cooperation with Penn State University and PA State Sheep and Wool Growers.

SAT., SEPT. 1 - 10:00 A.M. 40 acre dairy farm and Personal Property. Located approx. 1 1/2 miles north of Goodville, PA

along Spring Hollow Rd., Caernarvon Twp., Lancaster Co., PA. Terms by Henry Nestruck, Sr. & Sandra L. Nestruck. Elton & Alvin Horning, Auctioneers, Horning Farm Agency, Inc.

SAT., SEPT. 1 - 10 A.M. Public Sale of Antiques & Household Goods at the Willow Street Community Building. Sale by Mary Blecher. Auctioneers Lloyd H. Kreider & Randal V. Kline. Gary L. Shirk, Apprentice.

SAT. SEPT. 1 - 10:00 A.M. Public Sale of Farm Equipment, and Household Items. Located in Mahantongo Valley, 1 mile south of Pitman, 1 mile east of Rt. 125 at Franklin Square, 5 miles north of Hugins, 10 miles south of Shamokin. Watch for auction signs at Keim's Tavern on Rt. 125. Harold and Hilda Heim Owners. Deibert & Deibert Auctioneers.

SAT. SEPT. 1 - 9:00 A.M. Young's Annual Antique and Collectors Auction, located at the Belleville Livestock Market Building, Belleville, PA. Young's Antiques Owners. Mark Glick and Dale Gibboney Auctioneers.

MON. SEPT. 3 - 11:00 A.M. Public Sale of Farm Equipment, Located 3 miles east of Elizabethtown along the Milton Grove Rd., near Rissers Mennonite Church. Sale by Amos L. Risser, Raymond Miller and Rufus Geib Auctioneers

MON. SEPT. 3 - 2:00 P.M. Public Sale of Valuable Farm and Wood Lots. Located along Rt. 897 northwest of Three Hill, between Terre Hill and Fivepointville. Terms by the

Mary Eshleman Estate, Lester O. Weaver and Barry D. Wanger Auctioneers.

MON. SEPT. 3 - 11:00 A.M. Public Sale of Farm Equipment. Located 3 miles east of Elizabethtown, PA 1/2 mile south of Rissers Mennonite Church along Milton Grove Rd. Sale by Amos L. & Elizabeth M. Risser. Raymond Miller and Rufus Geib Auctioneers.

TUES., SEPT. 4 - Franklin-Cumberland Co. Holstein Sale at Shippensburg Fairgrounds, Fred Naugle and Ralph Horst, Sale Managers.

THURS., SEPT. 6 - Horst's Machinery Sale at Marion, PA. Ralph W. Horst, Manager.

FRI. SEPT. 7 - 6:00 P.M. Public Sale of Bred Gilts, Open Gilts and Boars. Sale held at the Lebanon Fair Grounds, Lebanon, PA Sale by Leon, Lawrence and Thomas Arnold. Harry Bachman Auctioneer.

SAT. SEPT. 8 - 11 P.M. Public Sale of 116 Acre Dairy Farm. Located in Salisbury Twp., Lanc. Co., Pa. From Rt. 322 take Churchtown Rd. south approx. 1/2 mile to Mast Rd., turn right to farm. Terms by Katie S. Stoltzfus, Elton & Alvin Horning Auctioneers, HORNING FARM AGENCY, INC.

SAT. SEPT. 8 - 2:00 P.M. Public Sale of 3 bedroom home on 5 acres. Located midway between Terre Hill and Bowmansville, 1/2 mile south of Centre Church, 1/4 mile off Rt. 625 along Sawmill Rd., East Earl Twp., Lancaster Co., PA. Joseph and Ethel Eberly Owners. LeRoy S. Horst and Paul W. Horst Auctioneers.

SAT. SEPT. 8 - 10:00 A.M. Public Sale of 27 acre farm and Farm Equipment, Antiques and Household Goods Located along Buchdale Rd. (Between Witmer and Bird-in-Hand, Approx. 1 mile north of Bird-in-Hand), Upper Leacock Twp., PA. Terms by Nathan H Eberly Estate. T. Glenn Horst and Timothy G. Horst Auctioneers

SAT., SEPT. 8 - 1 P.M. Public Sale of 83 Acre Property. Location - Take Route 72 North from Lancaster thru Manheim to Mount Gretna Exit then take Rte. 117 West thru Mount Gretna to Colebrook, then take Rt. 241 South thru the Village of Lawn to property on left Owners, Anne H. Kurtz, Raymond E. Jacobs Jr. & Weaver B. Martin. John E. & Paul E. Martin, Auctioneers.

SAT. SEPT. 8 - 1 P.M. Public Auction of 83 Acre Property located in South Londenderry Twp., Lebanon County, Pa. Location-Take Rte. 322 East from Hershey to Rte. 117, take Rte. 117 South to Colebrook, then Rte. 241 South to land on left. Sale by Anne H. Kurtz, Raymond E. Jacobs, Jr. and Weaver B. Martin; John E. and Paul E. Martin, Auctioneers.

SAT. SEPT. 8 - 12:00 p.m. Lykens Valley Farm - 31 acres. Located 1 1/2 miles east of Gratz, 2 miles west of Spring Glen, 1/4 mile north off Rt. 25 in Lykens Twp., Dauphin Co., PA, 15 miles west off I-81, exit 34, 45 miles NE of Harrisburg. Robert and Theresa Smith Owners. George N. Deibert Auctioneer.

SAT. SEPT. 8 - 10:00 A.M. Public Sale of Antique Car, Household Goods, and Lawn Tractor. Located 1 block north of Rt. 30 at Hellam Exit on left side, Rd 11, York, Pa. John Ream Owner. Blaine Rentzel Auctioneer.

SAT. SEPT. 8 - 11:00 A.M. Public Sale of Surplus Farm Machinery, Milling Equipment, Trucks. Located in East Berlin, PA at the west end of the borough, along Rt. 234, rear of Round Hill Feed Mill (formerly East Berlin Mill) Round Hill Foods Inc. Owners Dennis J. Plunkert Auctioneer.

SAT. SEPT. 8 - 9:30 A.M. Public Sale of 50 acre farm, implements, household goods and antiques Held along Rt. 897 between Reinholds and Blainsport, Lancaster Co. PA Sale by Sadie Schannauer H H. Leid Auction Service.

CONSIGNMENT SALE

MONDAY, AUGUST 20 1979

Edge of town limits, South Race St., Myerstown, Pa.

- ★ 75 FARM TRACTORS
- ★ FARM MACHINERY
- ★ 25 COMBINES
- ★ CONSTRUCTION EQUIP.
- ★ TRUCKS

OUR USUAL RUN OF EQUIPMENT
TOO MUCH TO LIST
WE WILL HAVE A GOOD SELECTION

CONSIGNMENTS WELCOME!

Sale Held By

WENGER'S FARM MACHINERY, INC.

S. Race St., Myerstown, Pa. 17067

Day: 717-866-2135

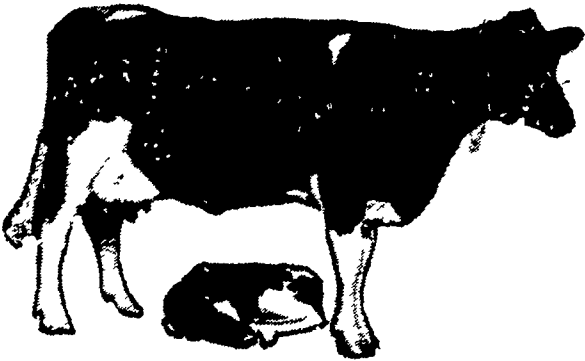
Night: 717-866-7147 or 273-9089

Auctioneers Fred Goodrich, Blaine Rentzel, Curt Howard

FUTURE SALES

**OCTOBER 15, 1979
DECEMBER 17, 1979
All Sales Rain or Shine**

NOTICE - PUBLIC AUCTION



at A. GRAND VIEW FARM KNOWN AS C.S. ERB FARM

FARM is located 3 1/2 miles southeast of Middletown, just off Rt. 441. Watch for signs at Peck Road. From Lancaster take 30 West to 441, then north to Peck Road or West on Rte. 283 to Middletown, take 441 South to Peck Road.

FRIDAY, AUGUST 17, 8:00 o'clock P.M. Sharp! 75 HEAD REG. & HI-GRADE HOLSTEINS

This sale consists of 33 head of top cows and large 1st calf Heifers. A real group from 1 herd. Also 22 Registered and Hi-Grade Springing large 1st calf heifers from 1 herd. Top breeding on Registered heifers include 5 Kingpins, Astronauts, R Maple and Erect. All bred to a son of Elevation with Dam scored VG and 21,000 of milk and 731 fat.

A load of top fresh and springing cows including some fine individuals.

Farmers...This is our first sale at this farm on which we plan to have monthly sales. Please mark this date and come see a fine group of cattle.

All sales final.
Cash of good check sale night.
TB and Blood Tested within 30 days.
Trucking available.

Lunch Stand
A. Doty Remsburg, Auction Service

NOTICE
BUS SERVICE FOR LANCASTER COUNTY AMISH
Bus will leave Shady Lane Dairy Sales Barn at 5:30 DST.

The following stops will be made:

Wakefield Store 5:45
Little Britain School 5:50
Union 6:00
Kirkwood 6:05
Bartville 6:15

Nine Points 6:20
Georgetown Dry Goods Store 6:30
Strasburg Bank 6:40
Guernsey Barn 6:45
Turkey Hill Minit Market, Smoketown 6:50
And On To Middletown

OWNER
GLENN FITE
717-786-2750
717-786-1725 or for information
Middletown Office 717-944-5963