

# Calendar

**Today, Aug. 11**  
Lancaster County Beekeeper's picnic, at Chiques Church of the Brethren, 4 p.m. until dark.  
**Sunday, Aug. 12**  
Lancaster County Farmers Union Picnic at the Lancaster County Park, 1 p.m.

**Monday, Aug. 13**  
Carlisle Fair gets underway. Eastern Pa. Championship Holstein Show, Kutztown-Howard County, Md. Farm Queen Contest.  
**Tuesday, Aug. 14**  
Inter-State Milk Producers picnic, Muddy Run Park. Dauphin County 4-H and FFA market hog show and sale, Lebanon Valley Livestock Auction.  
**Wednesday, Aug. 15**  
York County 4-H Olympics

at the York College athletic field, beginning at 8:30 a.m.  
York County swine round-up, Thomasville.  
**Thursday, Aug. 16**  
Dover Young Farmers family tour to Clearwater Conservation Project near Frederick, Md.  
**Sunday, Aug. 19**  
Lancaster County Farmers Association family picnic, at the Quarryville Fairgrounds, 1 p.m.

## Livestock market and auction news

### Chambersburg Auction

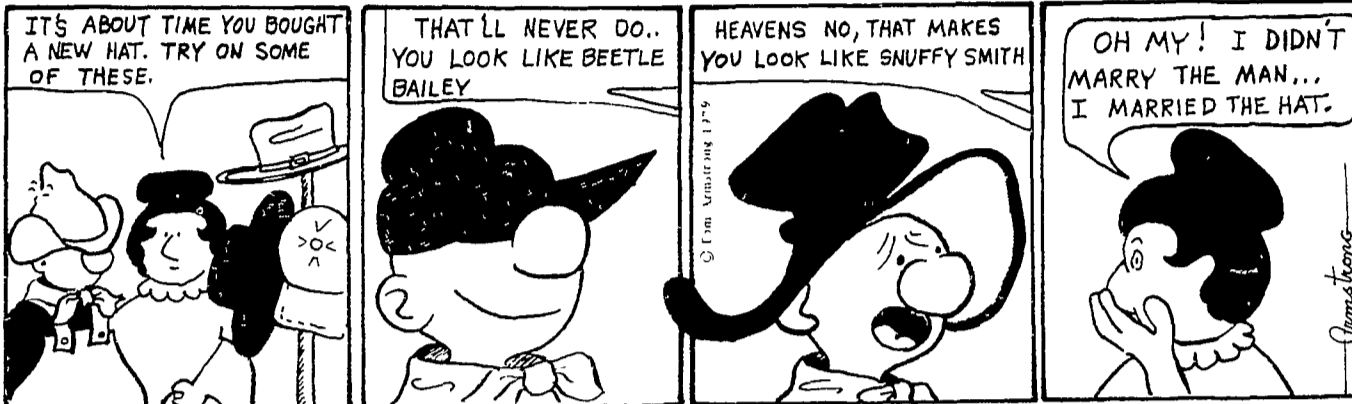
Chambersburg, Pa. August 9, 1979  
CATTLE 244. Compared with last Thursday's market, slaughter steers steady to weak. Sl. cows weak to 2.00 lower. Choice YG 1000-1330 lbs. 58.00-61.75, one

at 64.25. Good 54.00-59.50, few Standard 52.50-56.75, few Choice 870-1125 lbs. sl. heifers 56.00-62.00, few Good 52.00-55.50. Utility & Commercial sl. cows 47.00-50.25, few 51.85. Cutters 46.00-49.35, Canner & L. Cutter 43.00-46.50, Shells down to 38.00. Good Bullocks, a couple 59.00 & 59.10, Utility one at 53.85. Yield Grade #1 few

Slaughter Bulls 1430-1565 lbs. 60.00-69.00, Yield Grade #2 few 950-1160 lbs. 58.00-59.75. CALVES 580. Vealers 1.00-4.00 higher. Few Prime vealers 97.00-103.00, Choice 90.00-100.00, Good 80.00-93.00, few Standard & Good 110-130 lbs. 75.00-84.00, 90-110 lbs. 73.00-76.00, 70-85 lbs. 69.00-74.00, Utility 55.00-90.00 lbs. 50.00-72.00.

## RURAL ROUTE

By Tom Armstrong



## Garden Spot hosts Master Farmers

QUARRYVILLE — Master Farmers from all over Pennsylvania gathered in the Garden Spot last weekend for their annual picnic, banquet, and guided tours. About 120 people were in attendance for the picnic, held here at the Quarryville Fairgrounds. The banquet was held last Saturday evening at Willow Valley Restaurant. Air-conditioned buses took the Master Farmers to several well-known Lancaster County farms, as well as the farm museum maintained by Sperry-New Holland.

# BIG FARM POWER AND EQUIPMENT

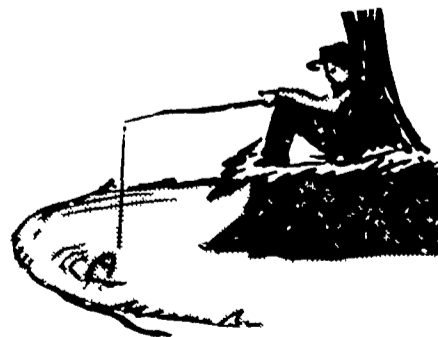
# STEIGER TRACTORS PRODUCE MORE

- ★ ★ ★ **DRAWBAR HORSEPOWER** per ENGINE HP through their more power-efficient drive trains.
- ★ ★ ★ **TIME** to do other things, like farm more ground.
- ★ ★ ★ **SECURITY** because they are simply designed of dependable components.
- ★ ★ ★ **PROFITS** by reducing the cost of operations

# WITH LESS

...FUEL ...NOISE ...DOWNTIME ...WORRY

# BUY A STEIGER and RELAX



SEE THE STEIGER ON DISPLAY AT AG PROGRESS DAYS

ALL NEW AND USED  
PRODUCTS BACKED  
BY  
**HOOBER  
PARTS  
& SERVICE**

**YOU CAN AFFORD A STEIGER**  
**C. B. HOOBER & SON, INC.**  
INTERCOURSE, PA  
717-768-8231

**HOOBER EQUIPMENT, INC.**  
SUDLERSVILLE, MD  
301-758-1212