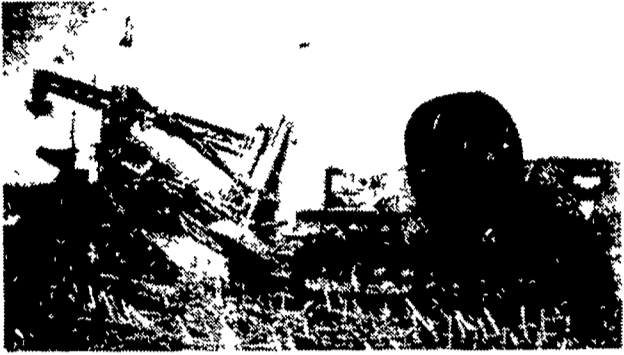


WHY?
 SHOULD I CONSIDER A
 FARM DRAINAGE INVESTMENT
 FROM
 COCALICO EQUIPMENT CO.
BECAUSE
 THEY ARE LAND IMPROVEMENT
 SPECIALISTS USING ALL S.C.S.
 APPROVED MATERIALS
Call 215-267-3808
 ASK ABOUT THEIR
 LASER BEAM GRADE CONTROL
 DRAINAGE MACHINE



Drainage Pays High Returns

Investment	Typical Annual Return
Land Drainage.....	21-46% (d)
Farm Buildings.....	3-23% (e)
Farm Land.....	11% (e)
Stocks.....	7.4% (f)
Bonds.....	6.1% (g)

COMPARE

Even with the conservative figures shown above, it's obvious that land drainage should top farmers' lists of investment priorities.

COCALICO EQUIPMENT CO.



DRAINAGE & EXCAVATING
 RD #3, DENVER, PA. 17517
 (215) 267-3808

Performance tested boar sale slated

HARRISBURG - Swine producers are not restricted to buying a "pig in the poke" anymore. Pennsylvania's second Performance Tested Boar Sale, August 22, at the Agriculture Department's Meat Animal Evaluation Center, offers the alternative of buying boars with good, reliable test records, according to Secretary of Agriculture Penrose Hallowell.

Average daily grain, feed efficiency and fat thickness are important performance traits which will be recorded and available to buyers at the sale. Hallowell said, "These are the major economic traits measured in most performance testing programs on pigs. These traits also respond the most rapidly to selection."

Several traits contribute to a herd's performance. "Each of these contributing traits may need to receive emphasis in a well designed breeding program. The problem arises when a breeder must determine how much emphasis should be placed on any one trait to produce genetically superior animals," Hallowell stated.

A selection index, a mathematically derived formula which combines performance information from several traits, or different measures of the same trait, will be available on all boars sold. A selection index can yield the most accurate estimate of an animal's overall breeding value. Hallowell noted that selections based on index values should result in the greatest amount of overall genetic improvement.

Approximately 75 percent of the tested boars will be sold at the sale, beginning at 7 p.m., Wednesday, August 22, at the Meat Animal Evaluation Center in University Park.

The program is sponsored by the Pennsylvania Department of Agriculture in cooperation with The Pennsylvania State University and the Pennsylvania Pork Producers Council.

Top market hogs chosen at Delaware Fair

NEWARK, Del. - Grand champion in the 1979 4-H feeder pig trials at the Delaware State Fair was Michael Gains (14) of Newark. His Yorkshire barrow also took the blue ribbon in the middleweight class. The 217 pound hog brought the top price of the day at auction, going to the Esskay Buying Station, Wye Mills, Md. for 76 cents a pound. (Current market price for hogs is around 39 cents).

chance to work with livestock regardless of the size of their backyards or local zoning restrictions where they live.

Reserve champion this year was a 237 pound gilt raised by Lin Martin (13½) of Milton. A three-way cross between Yorkshire, Hampshire and Landrace breeds, she was purchased for \$167.90 (70 cents a pound) by Dr. Robert T. Minner, Jr., from near Houston. He will use her to upgrade his swine herd.

This was Gaines' second year with a feeder pig project. Like a lot of other New Castle County competitors, he raised his pig at a barn made available to 4-H through the interest and cooperation of A. Felix DuPont Jr. The facility gives youngsters in the county a

Other top winners of the day included: 1st place, lightweight hogs (Scott Magargal of Landenberg, Pa.) and 1st place, showmanship (Steve Majchrcak of Seaford).

Sixty-five hogs were entered in the show, held July 30.

1980 wheat

(Continued from Page 134)

sound conservation practices are continued.

"We do not want to see fragile lands brought into wheat production in 1980. Acreage not traditionally used for crop production will not be added into a producer's normal crop acreage for subsequent years," he said. "In addition, we are reviewing our regulations concerning normal crop acreages and we may amend them to encourage farmers to follow good farming practices. If necessary, we may also seek legislative changes to encourage continued good farming practices as a

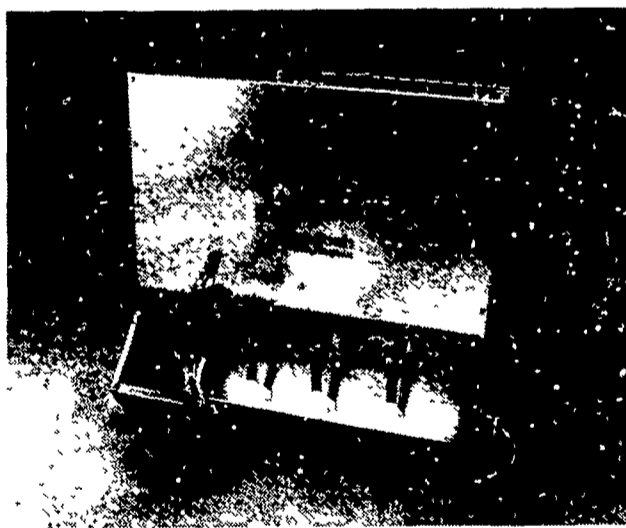
condition for farm program benefits."

Bergland said department officials have begun a review of the reserve program for wheat and other grains for possible administrative or legislative changes to make the program function more smoothly and in line with its objectives of protecting both farmers and consumers. A detailed review of target prices for all target price commodities is also underway. Should administrative or legislative changes be necessary in that system of income protection, these will be recommended, he said.

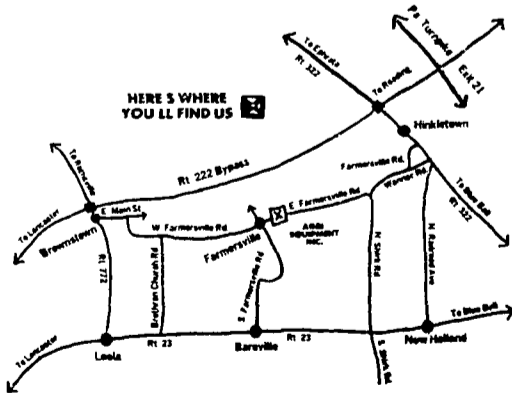
Announcing stainless steel dinnerware for hogs.

Shenandoah's stainless steel feeder is the next best thing to teaching your hogs table manners. They can stomp it, bang it, crowd it and abuse it, but it's virtually indestructible. It won't rust out, it won't wear out. And it will still be there, long after the hogs have

moved on. Stainless steel feeders are also easier to clean and disinfect than the old kind. Shenandoah makes 'em with a high grade of steel, and we make 'em tough because we want 'em to take anything your hogs can dish out.



S
 Shenandoah



Agri-Equip., Inc.

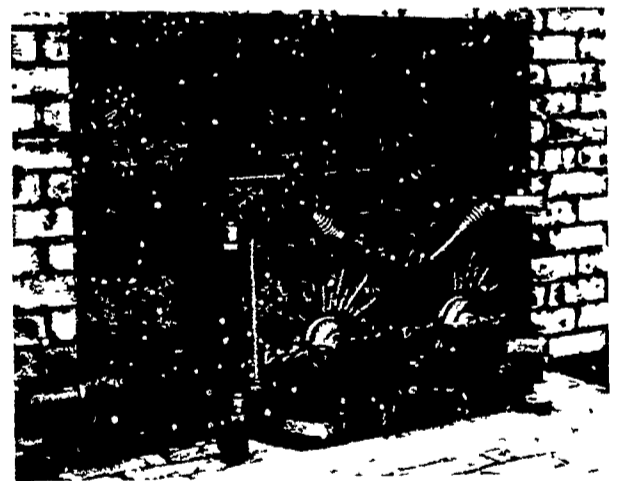
OFFERS COMPLETE

- SALES
- INSTALLATION
- SERVICE



CATTLE - HOG - POULTRY EQUIPMENT
 R.D.4, EPHRATA, PA. 17522
 PHONE: 717-354-4271
 STORE HOURS: Mon.-Fri. 7:30 to 5:30; Sat. 7:30 to 12:00

ALASKA KODIAK WOODBURNERS



FIREPLACE INSERT

- Fits into your existing fireplace complete with all parts, including blower and instructions for easy installation.
- Specifications (Large)
 Burning time 10 to 12 hours. Heating capacity with blower, 2,500 Sq. ft., without blower 2,000 Sq. ft. Fireplace minimum opening 23½" high x 32¼" wide x 15¾" deep

MANY OTHER MODELS AVAILABLE



CHESTER B. NOLT
 30 S. Hershey Ave., Bareville
 Leola, Pa. 17540
 717-656-6898

STORE HOURS:
 Closed Mon. & Tues.
 Open Wed., Thurs., Fri. 10 to 8
 Sat. 10 to 4
 Other hours by appointment