

Pa. Angus Association holds field day

FURLONG - The Pennsylvania Angus Association held their field day on July 21 at the Warren Angus Farm, here. The program began with an inspection and evaluation of the herd of 40 select cows by Dr. Erskine Cash, director of purebred

cattle, Penn State University. He spoke briefly about the family unit, testing and production records. Mick Colvin, director of the Certified Angus Beef Program, gave a progress report and stated that the program is really growing.

Beginning in Ohio in October of last year, the program has now spread to Missouri and will soon include sales in Connecticut. The third largest packer in the United States is now processing the Certified Angus Beef and has told buyers that they are interested in only black cattle.

Roy Wallace, director of beef, Select Sires, gave a talk on heat synchronization. He noted that "heat synchronization is not a miracle cure for all breeding problems" and is probably more for the commercial man with 100 or more cows and limited manpower than for the purebred breeder.

A memorial scholarship fund has been established by the ladies auxiliary of the association. A \$50 scholarship will be presented each year to one boy and one girl who qualify. Applicants must be active in Angus beef projects and be graduating high school seniors. These finals will

then compete on the national level for scholarships amounting to \$1,000, \$500 and \$300.

Kathy Wise, Spring Grove, was elected president of the Ladies Auxiliary. Serving with her are: Mrs. Erskine Cash, Centre Hall, vice-president, and Mrs. Robert Miller, Lebanon, secretary-treasurer.

On Friday evening prior to the field day, the Association held their dinner meeting. The following officers and directors were elected for 1979-80: President, Conrad

Grove, Downingtown; Vice-President, John Whiting, Stahlstown; Secretary-Treasurer, Patricia Holloway, Seven Valleys. Directors elected for a 3 year term were: Raymond Tait, Mercer; Ronald Bolze, Jr., Loysville; Robert Coleman, Harrisburg; and Robert Hay, Friedens.

Chester Hughes, newly appointed regional manager was introduced. It was announced that a Pa. Invitational Junior Angus Show would be held at the York Fair in September.

TRAILERS
59 VARIETIES

New and Used Trailers
Accessories - Hitches
Inspections - Repairs

★ DEALERS ★

M & S ARCTIC CAT & SUZUKI
RD 1 (1 1/2 Mi W of Blue Ball on Rt 322)
New Holland, Pa 17517
717/354-4726

MGS TRAILERS
RD3 (Near Zinn's Diner)
Denver Pa 17517
215/267-7528

MELLOTT BROS
TRLR. SALES
RD2 (Rt 272 N)
Willow Street, Pa 17584
717/464-4855

WHITE OAK
LAWN & LEISURE
329 W High St
Manheim, Pa 17545
717/665-4627

BUILDINGS FOR EVERY NEED
Quality Built & Expertly Constructed
Machinery, Confinement, Storage
Compare & Then Call Us
AND SAVE

BILL & STAN INC.
RD1 Brogue, PA (717) 927-6092
Serving York, Lancaster & No. MD

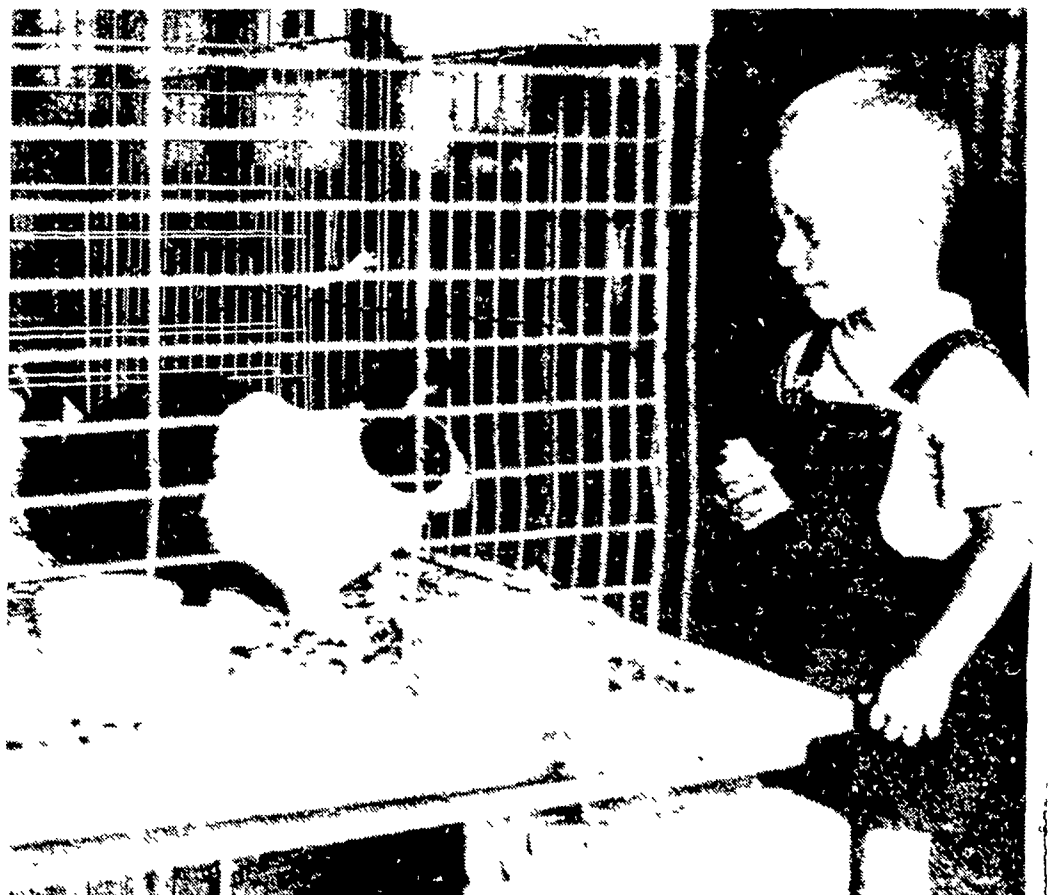
YOUR ONE STOP ALTERNATE HEATING CENTER FOR STOVES

- * WOOD
- * COAL
- * WOOD & COAL COMBINATION (Hot Water, Steam or Hot Air)
- * STOVE AND FIREPLACE ACCESSORIES
- * CHIMNEY BRUSHES AND INSULATED CHIMNEY

BOWMAN'S STOVE SHOP

FOLLOW SIGNS FROM LIGHT AT HINKLETOWN ON RT 322

RD 3 NAPIERVILLE ROAD
EPHRATA, PA 17522
PHONE 717-733-4973



Joe Gettle, 2, wasn't quite sure if he wanted to pet the rabbit, which is just as well, because the sign said not to.

Educate For Safety

NOW AVAILABLE . . .

IDEAL FOR MOLASSES

ROTARY MODEL 807 HAND CRANK MOLASSES PUMP

Fitted with a gear reduction drive, this self-priming heavy-duty rotary pump is designed to handle liquid viscosities beyond the capabilities of ordinary hand pumps. With sliding vanes that self-compensate for wear, the 807 is an efficient, economical means of transferring or dispensing molasses. Available as pump only, or in the AT model, shown at the right.

AT Style Dispensing model Pump with spout, suction pipe and 2" bung adapter

CALL TOLL FREE IN AREA CODES 215 & 717: 800-662-7464

ZOOK MOLASSES CO.
WEST MAIN ST., HONEY BROOK, PA. 19344
ALONG RT. 322 PHONE: 215-273-3776

Sharon Buildings . . .
Unusually Attractive !
. . . in color . . . in cost

Sharon Buildings for Every Need . . .

CALL COLLECT TO JACK McMULLEN 717-761-1863
OR WRITE SHARON METAL BUILDINGS
1500 STATE ST., CAMP HILL, PENNA. 17011