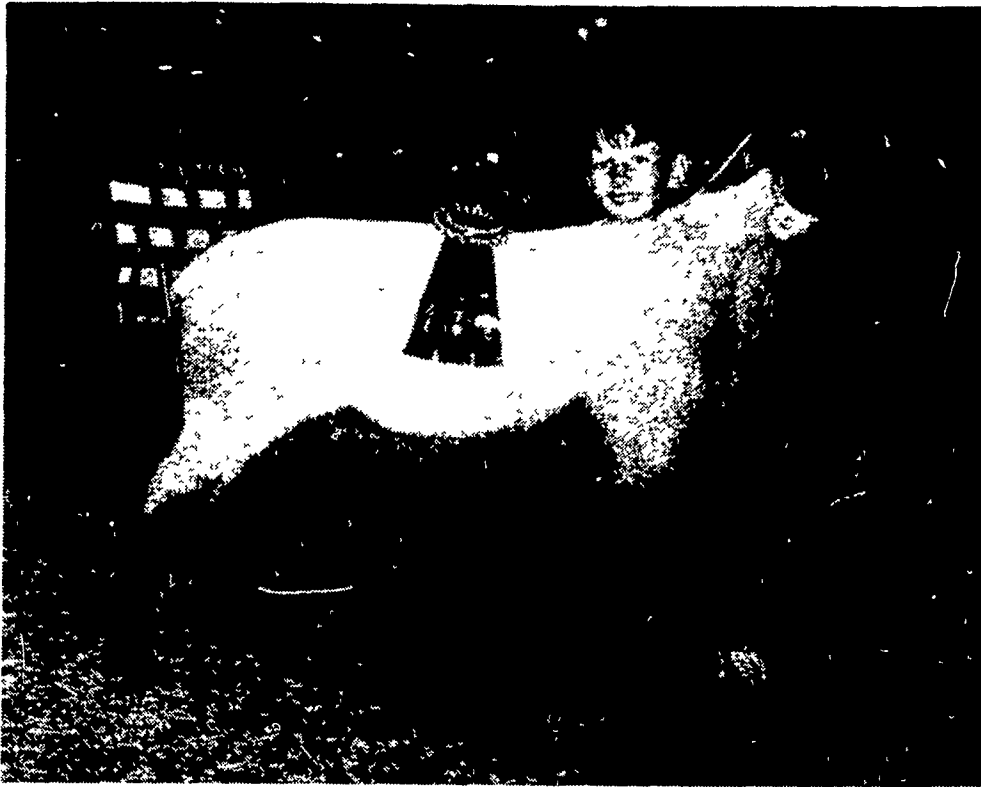


Sheep show winners listed at Goshen Fair

By **KENDACE BERRY**
GOSHEN — Sheep competition at the Goshen Country Fair opened Wednesday night with open competition in the Cheviot, Hampshire, and Suffolk classes, and the 4-H fitting and showmanship contests.



Billy MacCauley, of Breezeview Farm, Atglen, exhibited the grand champion Suffolk ram. It competed in the ram lamb class.

In the Cheviot division, John Aarell, Circle A Farm, Lincoln University, took the ram championship and reserve championship as well as the reserve championship with his ewe. Both rams were lambs, and his ewe came from the yearling class.

Another yearling Cheviot ewe, shown by Delaware Valley College, was named champion of its division.

Premier exhibitor of Cheviots was Delaware Valley College.

The Baroni Family, Downingtown, showed both the champion ram and ewe in the Hampshire division. The ram was first named tops in the lamb class and the ewe topped the yearling competition.

Strawberry Hill Hampshires had the reserve champion ram, a yearling, and the reserve champion ewe, a lamb.

Strawberry Hill Hampshires, shown by David Lytle, was also named the

Hampshire premier exhibitor.

Billy and Nancy MacCauley, a brother and sister team from Breezeview Farm, Atglen, dominated the Suffolk classes, claiming both the championships and the reserve championships in the ram and ewe divisions. They were also named the premier exhibitor.

In the 4-H fitting classes, in the age 9 to 11 division, Nancy MacCauley placed

(Turn to Page 12)



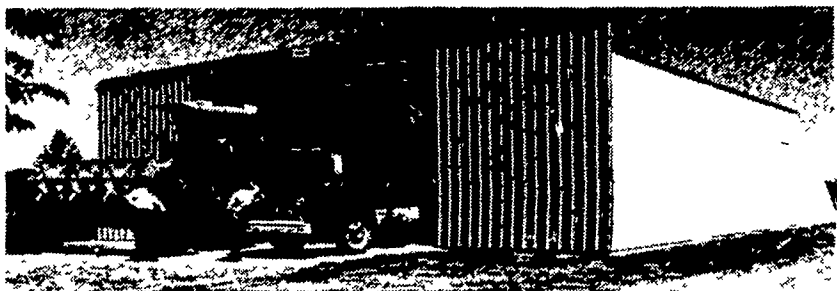
Nancy MacCauley, Atglen, showed this yearling ewe to the championship in the Suffolk class at the Goshen Fair's Wednesday sheep show.

BUTLER

CLEAR SPAN BUILDING

1-PER COUNTY
 Display Buildings
 Only

Buy a building at list price
 and get twice the length
 for only 50% more



FARMSTED I

30'x50'x11'

LESS THAN
\$4000

FARMSTED I
 GALV
 ROOF & WALLS
 16'x10' Double Slide
 Door

40'x50'x14'

LESS THAN
\$5000

FARMSTED I
 GALV
 ROOF & WALLS
 20'x13' Double Slide
 Door

50'x50'x16'

LESS THAN
\$7000

FARMSTED I
 GALV
 ROOF & WALLS
 24'x15'7" Double Slide
 Door

60'x50'x16'

LESS THAN
\$8500

FARMSTED I
 GALV
 ROOF & WALLS
 30'x15'3" Double Slide
 Door

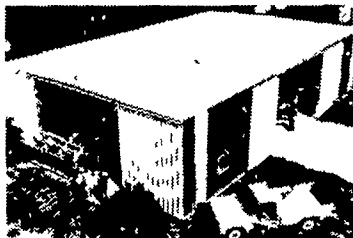
ALL BUILDINGS F. O. B.
 ANNVILLE, PA.

(Buildings not equipped as shown)

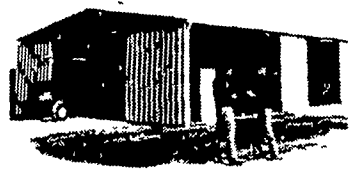
VARIOUS SIZES
 HEIGHT & WIDTH
 AVAILABLE

... Special Grain Storage Buildings Available

ALSO



FARMSTED II
 AND



AG-MASTER 2 12

**P. E. HESS,
 BUTLER MFG. CO**
 Box 337, Oxford, PA 19363

Name _____
 Address _____
 City _____
 State _____ Zip _____
 Phone _____
 (include area code) LF

CALL YOUR BUTLER AGRI-BUILDER TODAY

Beatty & Nelson Contractor
 C & M Sales Inc.
 A E Engel, Inc.
 Kholville Construction
 Kafferlin Sales & Service
 Greenside Contracting
 Orville Mack
 Leroy E. Myers Inc.
 Al Maurer
 W R Moody Contractor

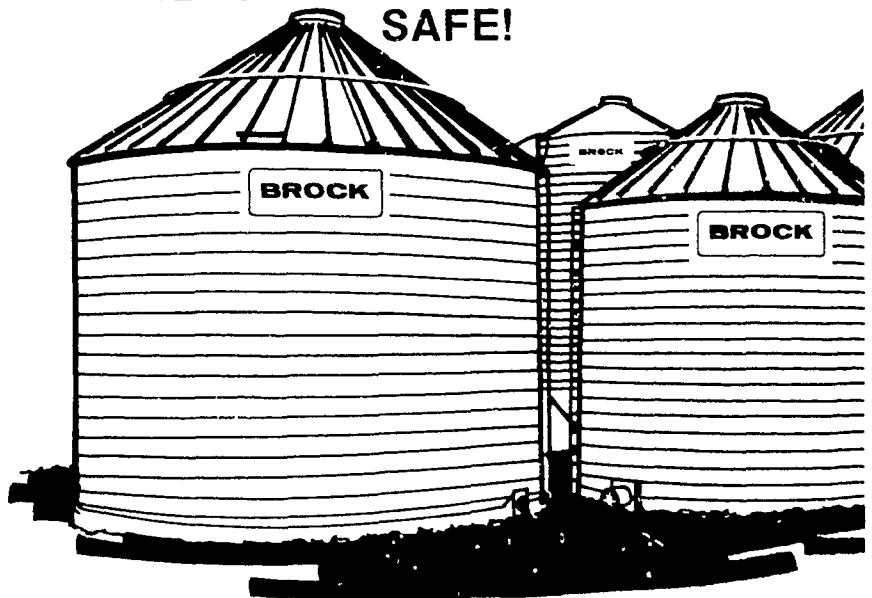
717-677-9310
 717-253-1612
 609-983-4404
 814-326-4188
 814-438-3180
 301-472-9161
 215-759-1331
 301-582-1552
 717-864-3135
 412-872-6804

O A Newton & Son Co
 Royer's Farm Service
 D E Smith, Inc.
 Glenn M. Stahlman
 Tap Enterprises Inc.
 Temco Parts Co Inc.
 Tri-County Agri-Systems
 Tri-State Marine Dist Inc.
 Walter J Construction*

302-337-8211
 717-837-3201
 717-436-2151
 301-777-0582
 215-929-2553
 301-778-4454
 609-467-3174
 301-867-1447
 717-392-8280

Why Store Your Grain in a BROCK?

REPUTABLE! DEPENDABLE!
 SAFE!



Brock bins have served well on many farms throughout the midwest Year after year they have earned their reputation for being dependable, safe storage These are the best reasons for storing your grain in a Brock

BROCK®

H
HERSHEY EQUIPMENT
COMPANY, INC.

SYCAMORE IND. PARK
 255 PLANE TREE DRIVE
 LANCASTER, PA. 17603
 (717) 393-5807

Route 30 West at
 the Centerville Exit

Designers of Quality Systems for Poultry, Swine and Grain Handling.