

Flower arrangement course available

UNIVERSITY PARK - If you want to preserve your flower garden's bounty in a permanent arrangement, plan so flowers are in the right stage of growth to be dried successfully.

Penn State's correspondence course on Flower Arrangement details the four methods of preserving plant materials - hanging,

dehydrating, pressing, and the glycerin. The seven-lesson course also gives instructions on design elements, selecting and conditioning plant material, principles of flower arrangement, containers, and corsage making.

To order a copy of this course which gives step-by-step procedures for

developing well proportioned arrangements, send \$4.00 plus 25 cents postage to Flower Arrangement, Box 5000, University Park, Pa. 16802. Make check available to Penn State.

New Set

Credit card holders are fast becoming members of a new cult - the "debt set"



A National Safety Council report says that tractors and other farm machinery are involved in one-fourth of the agricultural work related accidents. Tractors were involved in almost eight per cent of farm work injuries and 50 per cent of those tractors were more than 10 years old. Falls from tractors accounted for 20 per cent of the tractor related injuries, overturns for 10 per cent.

SAVE \$\$\$

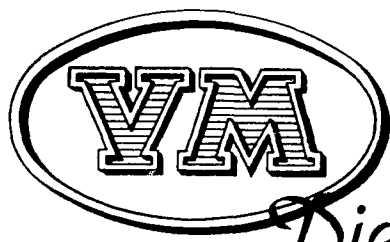
Ask Us For Repowering

REPOWER WITH VM DIESEL

SAVE \$\$\$

Ask Us For Repowering

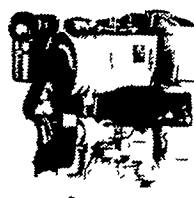
Harvesters, Haybines, Tractors, Compickers, Balers, Hydraulic Systems, Corn Binders, Choppers



1050 SU SERIES



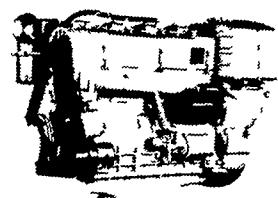
2800 R.P.M.
22 SAE HP
20 DIN HP



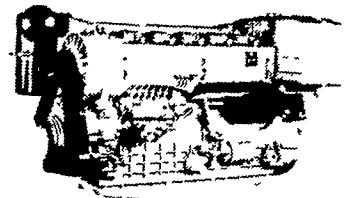
2800 R.P.M.
44 SAE HP
40 DIN HP



2800 R.P.M.
66 SAE HP
60 DIN HP



2800 R.P.M.
88 SAE HP
80 DIN HP



2800 R.P.M.
132 SAE HP
120 DIN HP

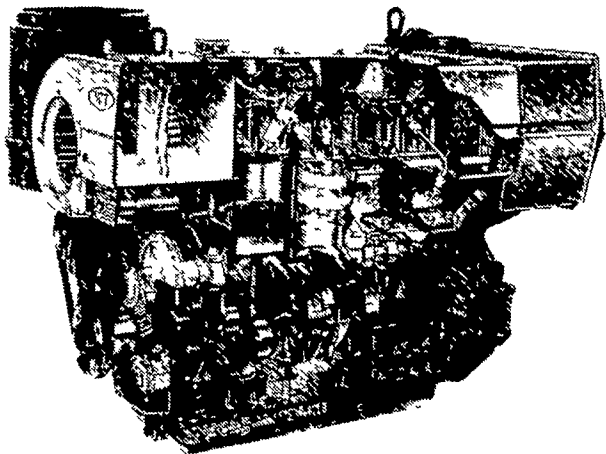
THE NEW AND REVOLUTIONARY FAMILY OF ENGINES

All New HR Series

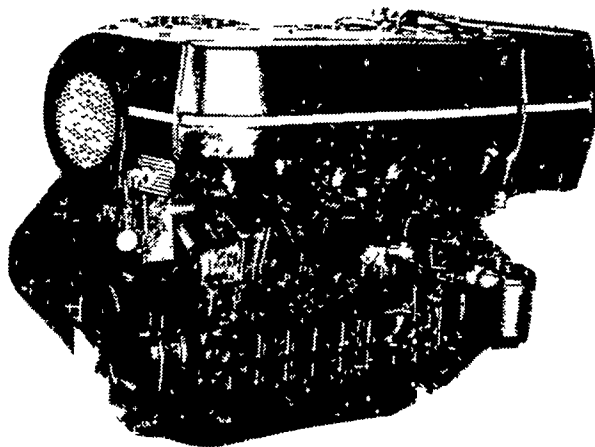


Oil Cooled Jacket

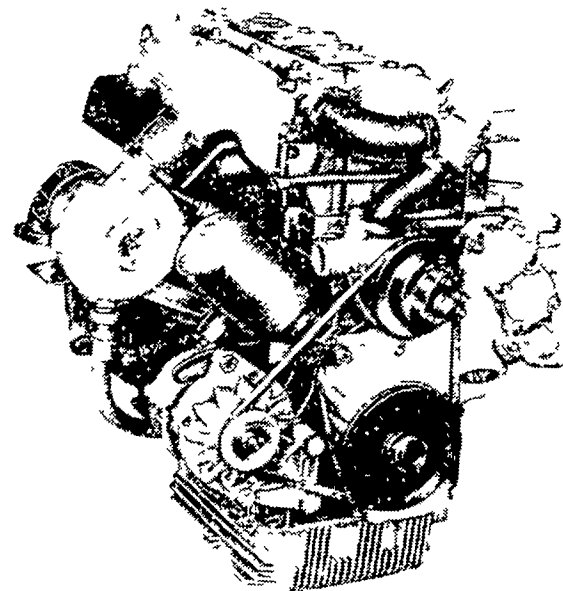
OIL COOLED



AIR COOLED



WATER COOLED



General Features:

- Integrally cast cylinders with inserted and removable wet type cylinder liners
- Light hypereutectic alloy pistons
- Extra-resistant steel connecting rods alloyed with special alloy head bearings
- Surface hardened steel crankshaft
- Drop-forged, casehardened and tempered steel camshaft
- Anti-friction cast-iron tappets alloyed
- Cast-iron tunnel type crankcase
- Rotatory injection pump with mechanical governor

- Force-feed lubrication with built-in circuit and lobe type pump
 - Diaphragm pump feed
 - Oil and fuel filters with integral type element.
- Special structure and patented engine with consequent increases in performance and easier operation with low weight/output ratio low smoke emissions.
- Engine based on a design "modulus" formula which allows a maximum parts standardization and interchangeability.

Ask For Horsepower Ranges Of Above.

THE "RIGHT FROM THE START" DIESEL ENGINE LINE FOR FAULTLESS PERFORMANCE

USED DIESELS

- (3) SR 2 Lister
- (3) DVA 1500 Stanzis
- ST 2 Lister
- 1 Cylinder Deutz
- F6L 912 Deutz

QUEEN ROAD REFRIGERATION

Box 67, Intercourse, PA 17534
Phone: John D. Weaver - 717-768-9006 or 768-7111
or Answering Service - 717-354-4374

24 HOUR SERVICE