

**ON THE FARM
MONTHLY BRED GILT
SALE**

FRIDAY, AUGUST 10

Sale to Start promptly at
1:00 DST every 4 weeks

Located 18 mi. South of Lancaster, Pa., 6 mi. South of Quarryville, take 272 to Little Britain, turn North, follow Little Britain Rd. to Jackson Rd., turn East, second farm, or take 222 out of Quarryville to Ceder Hill Rd. to Little Britain Rd. to Jackson Rd. Watch for sale arrows.

50 HEAD 50

(More or Less)

2 x 3 way cross bred gilts,
York & Hampshire & Duroc

This sale consisting of 25-3 way cross bred gilts (parent stock, Wayne Better Bilt Gilts that came in out of the West) York & Hampshire & Duroc cross. These gilts are sired by purebred duroc, bred to purebred York. Looking for Better Stock? Need replacements & adding on or just starting in? Here is an opportunity to buy Better Bilt Gilts (acclimated) due to farrow from 3 days to 4 weeks after sale date. These gilts have size & quality to suit most any buyer. If you are in need of bred gilts plan to attend this sale. They'll be ready, some will be close.

Owner,
CHRIST A. BEILER
R.D. 2
Quarryville, Pa.

Same time & place, 25 head (more or less) 2 & 3 way cross. Direct offspring from gilts purchased from Mark Nestleroth well known hog breeder from Manheim & a few from Willow Glen. These gilts are sired by purebred duroc also from Nestleroth stock and bred to purebred Hampshire from Franklin Feeser, Md. Due to farrow from 3 days to 3 or 4 weeks after sale date.

Everything vaccinated for erysipelas, wormed & sprayed for lice. Local trucker available.

Owner,
JOHN B. STOLTZFUS

Abe Diffenbach - Auctioneer
NEXT SALE DATE - Sept. 7.

Public Sales Register

Closing Date - Monday, 5:00 P.M.
of each week's publication

THURS AUG 16 - 7 00 P M
Public Sale of Boars Held at the Delaware State Fairgrounds, Rt 13 Harrington, DE For Catalogs write Dr Richard E Fowler, Animal Science Dept., Univ of Delaware, Newark, DE 19711

THURS AUG 16 - 11 00 A M
Lish-Creek Farm Dispersal Belleville, PA At the farm, from East take Rt 322 to Reedsville Exit and Turn left on Rt 655 and follow south of 8 miles to Front Mountain Rd (Located between Medical Center & Rest Home) turn left, go 3/4 mile and turn right to farm lane From West on Rt 22 take Rt 655 north at Mill Creek and 17 miles north and turn right on Rd between Medical Center and Rest home as above Watch for signs on 655 Moses J and Mark L Zook Owners R Austin Backus, Inc Sale Managers and Auctioneers

THURS, AUG 16 - 10 30 A M
Public Sale of Antique Farm

Machinery, Automobiles, and a few Household Goods Sale to be held on Tough & Tumble Grounds, located along Rt 30 between Gap and Paradise at Kinzers, Lancaster Co, PA Terms by John K Mast Auctioneer Leon Kurtz

THURS, AUG 16 - 1 00 P M
Public Sale of Valuable Real Estate Located at RD1, Thomasville, PA, York Co, along Lake Rd in Paradise Twp Take Lake Rd off Rt 30 and go south approx 1/2 mile Lester Shearer, Administrator of Helen M Shearer Estate Jacob Gilbert, Auctioneer

THURS, AUG 16 - 10 00 A M
Public Sale of Farm Equipment, Shop Equipment, Trucks, Gas Engines, Antiques Located along Rt 100, 1/2 mile south of Fogelsville, Lehigh Co, PA Sale for Mabel Adams Ralph W Zettlemoyer Auction Co

FRI AUG 17 - 6 30 P M Con

signment Sale of Feeder Cattle & Feeder Pigs at Keister's Midleburg Auction Sales, Inc Rt. 522, 3 miles East of Midleburg, 5 miles West of Selin grove, Pa Don & Walt Keister, Owners Ray Long & Dave Imes Auctioneers

FRI, AUG 17 - Gerald and Mabel Hammond Sale of Holstein first calf heifers Located 3 miles north of Chambersburg, PA Ralph W Horst, Auctioneer

FRI AUG 17 - 11 30 A M Over 75 Registered Holsteins Sell at Cobleskill Fairgrounds, Cobleskill, NY at The Production Plus Sale For information contact sale managers Warren Wigsten, Pleasant Valley, NY 12569 or David Gibson, Brandon, Vt 05733

FRI AUG 17 - 7 30 P M Hammondale Acres Holstein Heifer Sale Held at the farm located 3 miles N of Chambersburg, PA 1 mile south of Letterkenny Army Depot, Gate 1, between Cheesetown and Salem Church Gerald and Mable Hammond and Family Owners Ralph W Horst Auctioneer

SAT AUG 18 - Scott Construction and Excavating Equipment Located 2 miles E of Ulysses, PA (Potter Co) next to Country Cottage Restaurant (Air Strip Wellsboro, PA and Wellsville, NY) Owners Mr & Mrs Stanley Scott 814-848-7249 Robert Shaylor Sales, Troy, PA 717-297-3278 or Jerry Pirrung 814-848-7421 Sale Managers and Auctioneers

SAT AUG 18 - 11th Annual All Day Community Sale to be held by Berks Co Pomona Grange at the Leesport Auction Grounds Farm Equipment, Household Goods, Tools & Antiques 8 Auctioneers

SAT AUG 18 - 9 30 A M Public Sale of Real Estate, Farm Machinery, Household, Antiques, etc Located 3 miles south of Catawissa, PA off Rt 487 (Franklin Twp, Columbia

Co) Turn at Lake Glory sign and follow Auction arrows Sale by Mrs. Mercy Getkin, Donald E Hock & George J Henry Auctioneers.

SAT. AUG 18 - 10 A.M. Public Sale of Antiques & Household Goods. Located 2 miles South of Quarryville along 472, corner of Kirkwood Pike & Solanco Rd Sale by Melvin C. Boyce Auctioneers Lloyd H. Kreider & Randal V Kline Gary L Shirk Apprentice

SAT, AUG. 18 - 10 00 A M Public Auction of Farm Items, Crafts, Household Items Sale benefit of Litz Area Mennonite School, located 1050 East Newport Rd, adjacent to the new Hess Mennonite Church. Abe Diffenbach, Auctioneer

SAT, AUG. 18 - 10 30 A.M. Public Sale of Farm Machinery, Potato Equipment, Some Furniture, and Old Coins Located about 1 mile north of Shrewsbury, PA off N Main St (Old Susquehanna Trail), along Valley Rd, turning at the Agway Farm Store. Mr & Mrs Monroe Miller, Owners Robert L Sechrist, Auctioneer

SAT, AUG 18 - 12 30 P.M. Public Sale of Household Items and Old Log House to be torn down Located 8 miles west of Chambersburg, PA, Franklin Co Sale for Minor Robinson J Robert Meyers, Auctioneer

SAT, AUG 18 - 6 30 P.M. Danville Livestock Market, horse sale Located Old Route 11, Danville, PA Melvin M. Lehman, owner

MON AUG 20 - 9 30 A M Consignment Sale Located at S Race St., Myerstown, Pa 17067 Sale held by Wengers Farm Machinery, Inc

TUES AUG 21 - 5 30 P.M. Public Sale of Steam Engines and Whistles, Antique Engines Located along Rt 322, 1 mile East of Blue Ball, PA, Ervin Horst Owner, Nevin Z Martin Auctioneer



GAP AUCTION

FRIDAY EVE., AUGUST 10, 1979
5:30 P.M.

Located off Route 41 - Lancaster Avenue opposite Turkey Hill Mint Market - Cross RR Bridge.

**ANTIQUES AND HOUSEHOLD GOODS
SOLD AT EVERY AUCTION.**

Inspection Friday from 9 00 A.M. until sale time
CONSIGNMENTS ON MONDAYS
FROM 8:00 A M TO 7 00 P M
OTHER DAYS BY APPOINTMENT
Call us for pick up service

IRA STOLTZFUS & SON, Auctioneers

442-4936 or 442-8254

CONDUCTORS ALL TYPES PUBLIC SALES

**HUBLAND FARM
MILKING HERD DISPERSAL
TUESDAY, AUGUST 14**

(11:00 A.M.)
BRIDGETON, N.J.

Farm is 7 miles northwest of Bridgeton, N.J. near Cohansey, N.J. which is on N.J. Rte. 540. Watch for signs at 2nd crossroad east of Cohansey along 540. From Penna. follow Rte. 322 across bridge to Mullica Mill, N.J., then south on Rte. 77 to Rte. 540, and west to farm. Only 35 miles southeast of Philadelphia Airport.

**110 REGISTERED HOLSTEINS
(Includes 12 close bred heifers)**

All tested for immediate interstate shipment Exam. for Pregnancy
A HIGH PRODUCING, HIGH TESTING HERD SELLS!!

- 2 sell with 1004 and 1015-lbs fat
- 6 sell from 918 to 940 - lbs fat
- 17 sell from 800 to 899 - lbs fat
- 25 sell from 700 to 791 - lbs fat
- 19 sell from 611 to 698 - lbs fat (10 at 2 yrs of age)
- 4 sell from 25 to 27,000-lbs milk
- 6 more sell from 24 to 25,000-lbs milk
- 10 more sell from 22 to 23,000-lbs milk
- 16 more sell from 20 to 22,000-lbs milk

HERD IS CLASSIFIED — 2 "EX" - 24 "VG" - 44 "GP" - 5 "G"

LATEST ROLLING HERD AVERAGE — 17,429 M. 3.9% 680 FAT!!

TOP SIRES REPRESENTED!!

12 by Astronaut - 11 by Monitor - 11 by R Maple - 10 by Bootmaker - 8 by Elevation - 5 by Arlinda Chief - 5 by Kingpin - 4 by Tidy Gent - 4 by Double Triune - 3 by Lucky

LOOK AT THE SERVICE SIRES!!

29 bred to Elevation - 10 to Pete - 8 to Milestone - 7 to Milu - 5 to Conductor - 5 to Wayne - 3 to Jerry - 2 to Monitor - 2 to Kingpin - 2 to Pacemaker - 2 to Job

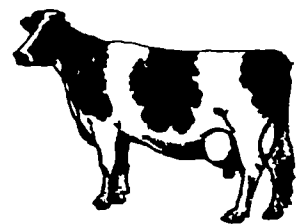
MAKE YGUR PLANS NOW TO ATTEND AND WATCH THIS HERD SELL AND BETTER YET ADD TO YOUR HERD!!

Sale starts 11:00 A.M. Lunch Available Catalogs Under Cover

Owners,
JOHN & MARTHA HUBSCHMIDT
R.D. 1, Bridgeton, N.J.
609-451-6189

R. Austin Backus Inc.
Sale Mgrs. & Auctioneers
Mexico, N.Y.

**DAIRY CATTLE &
MACHINERY
AUCTION**



**FRIDAY, AUGUST 10
AT 11 A.M. SHARP!**

For Greg Van Auken Rt. 517 3 miles North of Oldwick, N.J. 4 mi. N. of Interstate Rt. 78, use Oldwick Exit! Selling due to back illness!

11 A.M.

Cinder blocks, milk cans, seeder, plus other small items

12 NOON MACHINERY

N H 717 chopper w/dir cut hd, Gehl 810 and 710 chuck wagons, Gehl PTO hopper blower w/pipe, IHC 1 row corn picker, PTO elevator, J D. 494 corn planter, J D 55 3 btm. plow, 12 ft grain elevator, IHC loader for M or H, field sprayer, 3 sec spring harrow, disc

BARN EQUIP.

415 gal Sunset Bulk Tank, Patz 12 to 16 ft silo unloader, 4 Surge milkers

1 P.M. CATTLE - 30 HD. SELL!

Holsteins 3 Reg and 11 hi-grade cows, 1 bred heifer, 2 Reg calves, 3 grade calves (1 red hol), 1 bred Hol heifer 1 by Rockman, 1 by Leader 1 is a Kingpin granddtr Reg Guernsey cows and 1 bred heifer sired by Hollirex 1 Reg Jersey and 3 grade Jersey cows, 3 Jersey bred heifers, sired by Forester, Pilot and Virginian 11 hd are bred to calf from Sept to Dec, balance some fresh, bred and milking 4% creamery test! All Breeding! A herd that hasn't been pushed in any way! Pregnancy checked! T B & Blood tested for immediate interstate shipment!

Terms: Cash or Good Check with Identification - paid in full Sale Day! Not responsible for accidents!

Owner,
GREG VAN AUKEN

Sale conducted by:
Col. Fred R. Daniel Auctioneers Inc.
Neshanic Sta., N.J. 201-369-4784
Lunch Available