

Pennsylvania is second in direct marketing

WASHINGTON, D.C. - Farmers in six selected states earned nearly \$260 million last year from direct sales to consumers, according to details of a U.S. Department of Agriculture survey released here Monday. The six states surveyed were Indiana, Michigan, New Jersey, North Carolina, Ohio and Pennsylvania.

The report indicates the direct sales of trees and shrubs, bedding plants, and other nursery and floral products accounted for nearly one-third of the \$260 million, and that in New Jersey, 64 per cent of the farmers sold products directly to consumers last year.

Direct marketing activities are farmer-to-consumer sales at farmers' markets, roadside stands, pick-your-own farms and other outlets.

The USDA survey compared direct marketing activities for 1978 in six states where direct marketing is significant to the state's agricultural economy and sales data are available. Other survey findings:

-Thirty-six per cent of Michigan farmers sold products

directly to consumers in 1978, while in each of the remaining four states, less than 12 per cent of the farm population did any direct marketing.

-With the largest number of growers involved in direct marketing (over 23,000), Michigan grossed the highest sales—nearly \$76 million. Pennsylvania, with fewer than 7,000 marketers, was runner-up with \$68 million in total direct sales, followed by Ohio, Indiana, New Jersey, and North Carolina.

-Average sales per grower were the largest in Pennsylvania—over \$10,000. New Jersey, averaging \$5,658, ranked second.

-Apples were the most popular directly-marketed fruit, and sweet corn, the most popular vegetable, followed by strawberries and tomatoes. Michigan topped the list in apple sales with receipts of \$11 million. Michigan and Pennsylvania shared highest sales of sweet corn, each reporting more than \$2 million.

-Due to varying state legal requirements regarding the direct sale of fluid milk and dairy products, dairy sales were significant only in Pennsylvania, where they accounted for nearly \$27 million in 1978.

-North Carolina, with total direct market sales of less than \$20 million, was the only state to report direct sales of commodities such as okra, lima beans, green peas, and pecans.

MYERSTOWN REAL ESTATE PUBLIC AUCTION SATURDAY, AUGUST 11

9:30 A.M.

Real Estate at 2:00 P.M.

Located at 132 W. Main Ave., Myerstown, Lebanon Co., PA.

Selling 1/2 of a double house, 2 1/2 story brick and aluminum siding, tin roof, 3 rooms and complete bath on second floor, outside steps to second floor, 3 rooms on first floor with powder room, oil fired furnace, baseboard heat in every room, all rooms are paneled. Concrete block 1 car garage to rear of property, large attic, concrete basement.

Complete line of nice clean household items and furniture. Lots of small items.

For appointment of real estate showing - 717-866-6101.

Conditions by,
EDGAR GARLOFF

Auctioneers
"Carl" Beamesderfer
Ray Rhoads

Refreshments by Tulpehocken Church Women

PUBLIC SALE OF VALUABLE REAL ESTATE THURSDAY, AUGUST 16

1 P.M.

At R.D.#1, Thomasville, Penna. York County, along Lake Road in Paradise Twp. Take Lake Road off Route 50 and go South approx. 1/2 mile. The undersigned Admr. of the Helen M. Shearer Estate will offer at public sale the following -
FARM

Farm consisting of 17 acres and 95 perches improved with a frame house with kitchen & dining area, family room with fireplace, living room, laundry room & bathroom on first floor, 3 bedrooms, & sewing room on second floor, attic, several rooms in house are paneled, heated by oil hot water heat, slate roof, storm doors & windows, good well of water, yard area with trees & shrubbery, also frame barn, 2-car cement block garage & workshop, chicken house & other out bldgs. Majority of ground is farming, balance in pasture & woodland. There is a spring on this farm, bldgs. are in good condition. Good road frontage on both sides of Lake Road, also frontage on Cedar Lane. This is a very nice small farm that could be used in various ways. Will be open for inspection by appointment, phone 225-3329 or call auct. Terms: 10% down, balance in 30 days. Other conditions will be given at time of sale. Not responsible for accidents on day of sale.

LESTER SHEARER

Administrator

Jacob A. Gilbert, Auctioneer
Phone 252-3591
William H. Neff, Jr., Attorney

PUBLIC SALE HOLSTEIN DAIRY COWS AND HEIFERS, FARM EQUIPMENT, TRUCK WITH LOW BOY TRAILER FRIDAY, AUGUST 24

11 A.M.

At the farm along Route 254 just east of Jerseytown, Pa. near intersection of Route 44, Columbia County.

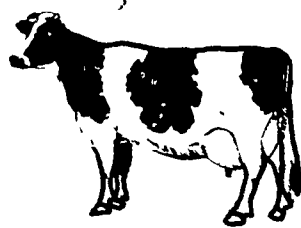
FULL LINE EQUIPMENT INCLUDES

MASSEY FERGUSON TRACTOR, 85 GAS TRACTOR, narrow front end John Deere "A" tractor, NEW IDEA 2 ROW SUPER SHELLER PICKED LESS THAN 100 ACRES. NEW IDEA #300 2 ROW PICKER, Duetz 10 Horse Power Stationary Engine, (2) John Deere 14 inch 3 bottom plows - 3 point hitch, Oliver 14 inch 2 bottom drag plow, John Deere 10 foot Transport Disk, (1) 10 foot Spring Harrow, New Idea 36 ft. elevator, Oliver forage Harvester single row, Grove forage box, 2 Hay Wagons (1 on steel, 1 on rubber), John Deere 6 foot Hay mower fits John Deere A, Case 13 Hoe grain drill, 2 Horse cultivators, John Deere 4 row corn planter, John Deere 2 row corn planter (3 pt. hitch), 2 DeLaval milker units, some tires and small items, Black powder Revolver (reproduction of 44), walnut lumber (400 to 500 feet), log chains (1/2" x 16") grabs hooks both ends.

1963 FORD F-700 DUMP TRUCK, 20" tires, runs good, 80% rubber. 34" Spread Tandem flat trailer, 22" rubber. 1967 Cadillac Coupe DeVille. Homemade Lowboy fifth wheel type, 17 ton. 2 Craftsmen riding mowers. Oliver 3 bottom 12" plow, trail type. Mall chain saw, 30" blade. 2 wheel utility trailer 6'x12' flat bed. Grease guns and pumps. Puch 125 CC gas driven dirt bike, 300 AMP Hobart welder, no motor. Air operated sliding fifth wheel. Farm kettle and milk can, aluminum storm doors and windows. Ben Franklin stove. Polaris 'Colt' snowmobile.

Come prepared to buy equipment at your price, some of which is in need of repair. Inspection prior to sale is welcomed.

31 HEAD OF DAIRY COWS AND HEIFERS



23 head of milkers mostly young large dairy type, some fresh and others calving fall, through winter and early spring, 2 bred heifers.

6 open heifers, all ages, cattle have the potential to produce. Charts available sale day.

Good Lunch

Sale by
RUFUS J. HOSTETLER
RD, Bloomsburg, Pa.

Aucts.
Carl Diller
J. Everett Kreider

GUY S. BECK ESTATE PUBLIC SALE OF SCHUYLKILL CO. FARM - PERSONAL PROPERTY SAT. AUGUST 11, 1979

On premises along Mexico Road about 2 miles S.E. of Pine Grove and about 8 miles north of Bethel. Take Route 501 north off of I-78 and turn east on Mexico Rd. and drive about 1 1/2 miles.

Farm consists of 116 acres, more or less, of land with 2 springs and stream. Erected there-on is a frame bank barn, small buildings, corn crib, and a 10' x 50' Mobil home.

Personal Property - corner cupboard, milk cupboard, 2 Majestic coal ranges, coal heatrola, oil heatrola, Unico chest freezer in good condition, Domestic elec. sewing machine in good condition, B & W portable TV set, oak bureau, piano stool, trunks, store scale, wooden tubs, split basket, benches, wash boards, some dishes, flails, old canteens, canning jars, chairs, wooden barrels, milk cans, rotary power mower, etc.

Farm Implements - One horse market sleigh, D.B. side rake, 3 P. hook up 2 bottom plow, tractor plow, P.T.O. grass mower, disc, 2 section harrow, Oliver grain drill, dump rake, tractor cultivator, silo filler w/ pipe, 2 wheel trailer, roll of snow fence, anvil, wall drill press, scrap iron, shovels, rakes, digging iron, munnung tools, tree trimmer, fruit picker, feed chest, corn shellers, small iron feed grinder, grind stone, straw cutter, hand tools, and other items.

Sale starts at 10:00 A.M. Farm at 1:00 P.M. For inspection phone 717-345-3074 or 717-345-4992 for an appointment.

Conditions by,
LYNN L. KOHR Heir
RHEDA J. HUBLER Executrix

Roy I. & David L. Ebersole Auctioneers
Charles L. Frank Attorney

Lunch available - Not responsible for accidents

Broiler placements continue up

HARRISBURG - Placements of broiler chicks in the Commonwealth during the week ending July 14, 1979, were nine per cent above the same week a year ago, according to the Pennsylvania Crop Reporting Service.

Placements were 2,209,000, about the same as the previous week. Average placements during the past

nine weeks were ten per cent above a year ago.

Placements of broiler chicks in the key 21 poultry producing states were 76,824,000, five per cent below the previous week but seven per cent above a year earlier. Average placements in the 21 states during the past nine weeks were nine per cent above a year ago.

PUBLIC SALE OF STEAM ENGINES AND WHISTLES ANTIQUE ENGINES — ACCES. TUESDAY EVE., AUGUST 21

5:30 P.M.

Location: From Blue Ball take Rt. 322 East to Rt. 897 turn right, first prop-erty on left. East Earl Twp., Lancaster Co., Pa. Watch for yellow sale signs.

From Rt. 30 (at Gap), take Rt. 897 North app. 10 miles, sale on right.

1921 8 1/2 x 10 STEAM ENGINE with new flues, in good condition; Case 80 H.P. Steam Engine (less boiler), also steel rear wheels, pre-heater and few parts; Steam Turbine Generator, 1500 watt; 1 1/2 K.V.W.; Two Cylinder Steam Water Pumps; Steam Oilers; Water Gauges; Flue Brushes; Steaming Pans with Cart; 12-LARGE RAILROAD CALENDARS in Frames, some 40 years old;

1935 John Deere D Tractor on steel Hit and Miss Engines

2 - New Holland 1/2 H.P. and 5 H.P. on Cart; International 1 1/2 H.P. with Spoke Fly Wheel; Ottawa 4 H.P.; Galloway 2 1/2 H.P.; Coloway Cub; Cushman 4 H.P. and 8 H.P. on Cart, Water Loo Boy 2 H.P.; Maytag Twins and Singles, also some parts; Aero Motor with Pump Jack; Sattley 1 1/2 H.P.; Eclipse 4 H.P. Upright Hot Tube; Taylor Vacuum Engine; Economy 1 3/4 H.P.; John Lawson 2 H.P.; Domestic 3 1/2 H.P. Side Shaft with Double Pump; 4 - Fairbanks Morse 1-3-5 and 6 H.P. on Cart; Johnson Utili Motor; Stover 3 H.P.; 3 - Associated 2 1/4 - 2 1/2 - 3 H.P.; 2 - Delco Light Plants 750 and 850; plus more engines and parts not listed.

35 BRASS STEAM WHISTLES some very rare; 3 Chimes to 3 ft. high; Locomotive, Ship, Sailboat Bellow 3 Chime Fog Horn; plus many others.

2 - Old Hammer Guns; 410 Pump Sho. Gun, like new; 12 Ga. Single Barrel Shot Gun; Miniature Windmills; Walking Plow; Power Hack Saw; Elgin Keywind Watch; some Shop Tools.

NOTE: This is a fine and rare line of antique engines and whistles, don't miss it. No inspection of articles except day of sale. Come early and enjoy the evening with us. In case of rain, sale held indoors.

Sale by
ERVIN HORST

Auct.
Nevin Z. Martin
Clerks: Martin's

Refreshment Stand
Not Responsible For Accidents