

Berks County DHIA

(Continued from Page 130)

| | | | | | | |
|------------------|----|-------|-------|------|-----|------|
| David Clare | G8 | 30.4 | 100.6 | 35.8 | 4.7 | 1.69 |
| Zahncroft Farm | B3 | 45.0 | 94.5 | 54.7 | 3.1 | 1.68 |
| Vista Grande | 3 | 87.7 | 89.1 | 49.4 | 3.4 | 1.68 |
| Randy Reppert | B8 | 43.0 | 88.0 | 46.0 | 3.7 | 1.68 |
| H. Fenstermaker | 3 | 33.2 | 91.2 | 44.4 | 3.8 | 1.67 |
| W. G. Howerter | 3 | 76.4 | 82.9 | 41.7 | 4.0 | 1.66 |
| Earl Hafer | B8 | 88.0 | 94.5 | 48.4 | 3.4 | 1.66 |
| Scattered Acres | B3 | 109.9 | 88.5 | 51.0 | 3.3 | 1.66 |
| D. J. Harnish | B3 | 73.5 | 84.6 | 46.6 | 3.5 | 1.65 |
| John Snyder | B3 | 48.3 | 84.4 | 50.1 | 3.3 | 1.65 |
| Daview Farm | B3 | 39.3 | 86.0 | 42.8 | 3.9 | 1.65 |
| Raymond Seidel | 3 | 38.0 | 89.3 | 44.3 | 3.7 | 1.65 |
| Larry Phillips | B3 | 38.0 | 88.2 | 44.8 | 3.7 | 1.65 |
| A. D. Schlappich | B3 | 57.0 | 87.0 | 46.0 | 3.6 | 1.65 |
| Roy Hoppes | B3 | 27.8 | 73.9 | 44.0 | 3.8 | 1.65 |
| Earl Hafer | B8 | 88.3 | 93.7 | 48.0 | 3.4 | 1.64 |
| R. K. Dietrich | 3 | 76.2 | 88.1 | 46.3 | 3.5 | 1.64 |

| | | | | | | |
|------------------|----|-------|------|------|-----|------|
| Bruce Fegely | B3 | 36.2 | 91.3 | 46.8 | 3.5 | 1.64 |
| D. Burkholder | G3 | 85.2 | 85.8 | 46.7 | 3.5 | 1.64 |
| Glenn Gockley | G3 | 28.6 | 91.9 | 42.2 | 3.9 | 1.63 |
| Lynn Stoudt | B3 | 42.0 | 91.9 | 46.4 | 3.5 | 1.62 |
| Robert Yanos | B3 | 47.0 | 92.6 | 43.6 | 3.7 | 1.62 |
| Veron Good | B3 | 35.0 | 90.6 | 44.5 | 3.6 | 1.61 |
| George Moyer | B3 | 79.6 | 90.9 | 45.0 | 3.6 | 1.61 |
| Richard Hoppes | B3 | 58.0 | 92.3 | 46.1 | 3.5 | 1.61 |
| Norman Nolt | B8 | 35.3 | 82.8 | 46.4 | 3.5 | 1.61 |
| Keith Hertzog | B3 | 43.0 | 80.4 | 48.1 | 3.3 | 1.61 |
| David Herbert | 3 | 53.0 | 85.7 | 43.9 | 3.6 | 1.60 |
| Show Top Farm | B3 | 132.3 | 90.1 | 45.8 | 3.5 | 1.60 |
| Daview Farm | B3 | 39.9 | 85.6 | 42.1 | 3.8 | 1.60 |
| Troutman/Sons | B3 | 105.2 | 85.4 | 43.1 | 3.7 | 1.60 |
| B. Burkholder | B3 | 47.8 | 84.5 | 43.9 | 3.6 | 1.60 |
| O. Kleinsmith | B3 | 32.0 | 89.3 | 43.0 | 3.7 | 1.60 |
| Elam Hoover | B8 | 64.1 | 92.8 | 43.7 | 3.7 | 1.60 |
| Herb Top Farm | B8 | 25.0 | 82.7 | 41.0 | 3.9 | 1.59 |
| Way Har Farm | B3 | 105.6 | 81.4 | 48.0 | 3.3 | 1.59 |
| R. H. Hoffman | B8 | 65.0 | 89.0 | 40.6 | 3.9 | 1.59 |
| F. G. Gromlich | B3 | 60.3 | 90.8 | 39.1 | 4.1 | 1.59 |
| H. C. Krill Jr. | B8 | 38.0 | 86.3 | 41.4 | 3.8 | 1.59 |
| Pine Brook Farm | B3 | 93.3 | 89.8 | 43.5 | 3.6 | 1.58 |
| Harry Shaak | B3 | 90.9 | 89.5 | 43.0 | 3.7 | 1.58 |
| E. C. Hoffman | 3 | 54.6 | 87.3 | 45.4 | 3.5 | 1.57 |
| C. D. Moyer | B8 | 113.4 | 85.0 | 43.7 | 3.6 | 1.57 |
| Rosenbaum/Son | B3 | 76.9 | 90.6 | 43.1 | 3.6 | 1.57 |
| P.&T. Werley | B3 | 107.5 | 82.9 | 43.4 | 3.6 | 1.57 |
| M. M. Stauffer | B8 | 37.5 | 83.3 | 41.5 | 3.8 | 1.56 |
| C. D. Moyer | B8 | 123.9 | 81.9 | 42.0 | 3.7 | 1.56 |
| Dreibelbis/Sons | B2 | 45.0 | 89.1 | 34.2 | 4.5 | 1.55 |
| D. B. Duncan | B3 | 85.1 | 80.6 | 42.0 | 3.7 | 1.55 |
| Kenneth Zook | B8 | 40.2 | 84.9 | 44.5 | 3.5 | 1.55 |
| Scattered Acres | B3 | 110.0 | 84.3 | 48.7 | 3.2 | 1.55 |
| E. D. Leatherman | B3 | 68.0 | 85.4 | 41.1 | 3.8 | 1.55 |
| A. Oberholtzer | B3 | 72.7 | 84.4 | 43.1 | 3.6 | 1.55 |
| Earl Latshaw | B3 | 47.3 | 91.8 | 43.7 | 3.5 | 1.55 |
| E. K. Siegfried | 3 | 61.8 | 91.4 | 42.3 | 3.6 | 1.54 |
| Roger Buch | 3 | 47.3 | 82.4 | 44.5 | 3.5 | 1.54 |
| Rodger Wagner | B8 | 109.5 | 89.6 | 43.5 | 3.5 | 1.53 |
| James Stutzman | B3 | 45.6 | 82.1 | 38.1 | 4.0 | 1.53 |
| Pinnacle Dairy | B3 | 49.1 | 86.2 | 41.8 | 3.7 | 1.53 |
| A. E. Schmidt | 3 | 53.0 | 93.4 | 41.1 | 3.7 | 1.52 |
| Donald Meyers | 3 | 60.5 | 85.6 | 38.1 | 4.0 | 1.52 |
| D.&D. Martin | 1 | 30.8 | 82.1 | 36.7 | 4.1 | 1.52 |
| Dreibelbis/Sons | B2 | 46.5 | 81.4 | 33.2 | 4.5 | 1.51 |
| H. C. Krill Jr. | B8 | 38.0 | 79.0 | 40.8 | 3.7 | 1.51 |
| I. G. Weaver | G3 | 46.8 | 85.3 | 39.8 | 3.8 | 1.51 |
| Hylark Farm | 3 | 72.4 | 87.9 | 40.8 | 3.7 | 1.50 |

| OWNER NAME OR NUMBER | BREED | AGE | DAYS IN MILK | lbs. MILK | lbs. FAT |
|----------------------|-------|-----|--------------|-----------|----------|
| David P. Herbert | | | | | |
| Pat | H | 3-9 | 305 | 21,429 | 753 |
| Eleanor K. Siegfried | | | | | |
| Dora | H | 3-3 | 305 | 16,281 | 660 |

Lancaster Farming, Saturday, August 4, 1979-131

| | | | | | |
|------------------------|---|------|-----|--------|-----|
| Erma | H | 4-6 | 305 | 17,155 | 651 |
| Reu Hel Farms Inc. | | | | | |
| Seven | H | 5-8 | 305 | 20,008 | 762 |
| Dodi | H | 4-6 | 305 | 17,961 | 652 |
| Karena | H | 3-6 | 305 | 18,915 | 708 |
| Perlie | H | 3-5 | 305 | 19,482 | 673 |
| Vista Grande Farm | | | | | |
| Butter | H | 3-10 | 303 | 18,119 | 694 |
| John F. Snyder | | | | | |
| Sharon | H | 6-0 | 305 | 19,187 | 734 |
| Rodger L. Wagner | | | | | |
| #115 | H | 5-10 | 305 | 16,225 | 733 |
| #25 | H | 3-4 | 305 | 18,414 | 731 |
| Linden Loch Holstein | | | | | |
| #44 | H | 6-10 | 305 | 18,162 | 724 |
| #S4 | H | 5-10 | 305 | 15,998 | 706 |
| W3 | H | 5-10 | 301 | 21,569 | 699 |
| Donald B. Duncan | | | | | |
| #75 | H | 6-10 | 305 | 13,130 | 672 |
| #23 | H | 4-10 | 305 | 18,404 | 687 |
| Charles & Tim Kissling | | | | | |
| Molly | H | 7-11 | 305 | 22,860 | 924 |
| Mini II | H | 4-4 | 305 | 21,662 | 727 |
| Herb Top Farm | | | | | |
| Bev | J | 6-2 | 305 | 11,665 | 680 |
| Ralph G. Sanner | | | | | |
| Violet | H | 5-10 | 305 | 20,091 | 706 |
| Boots | H | 4-8 | 305 | 19,292 | 814 |
| Jan | H | 3-7 | 302 | 16,079 | 723 |
| Leonard G. Stoltzfus | | | | | |
| Jaja | H | 8-4 | 238 | 19,645 | 662 |
| Lilly | H | 3-8 | 305 | 16,420 | 685 |
| Bessie | H | 1-11 | 305 | 18,357 | 814 |
| Mertz Brothers | | | | | |
| Sandra | H | 7-11 | 305 | 20,491 | 790 |
| Kenneth Zook | | | | | |
| #71 | H | 5-3 | 301 | 19,104 | 688 |
| #2 | H | 4-4 | 303 | 14,905 | 650 |
| #60 | H | 9-0 | 305 | 21,274 | 774 |
| Robert Yanos | | | | | |
| Dawn | H | 6-2 | 305 | 16,685 | 702 |
| William G. Howerter | | | | | |
| Kathi | H | 6-1 | 294 | 17,040 | 712 |

(Turn to Page 132)

SILAGE CART FEED CART



- 3 Sizes Available
- 34" Width with 16" air tires.
- 30" Width with 12" air tires.
- 27" Width with 10" air tires.
- Sturdily Built.
- For easy handling ball bearing wheels & Caster Wheel
- Choice of 10" Solid or air tires.

MANUFACTURED & DISTRIBUTED BY...
SCENIC ROAD FARM SUPPLY

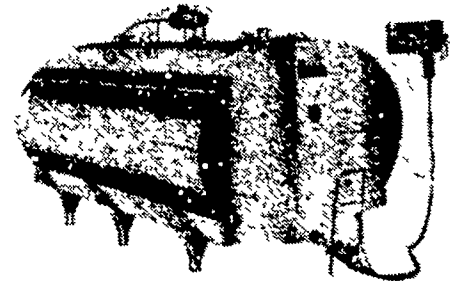
3539 Scenic Road
Gordonville, PA. 17529
AUTHORIZED DEALER...
AARON S. GROFF & SON
RD 3, Ephrata, PA. 17522
Phone: 717-354-4631
— DELIVERY AVAILABLE —

MUELLER Bulk Milk Coolers

THE BULK MILK COOLER THAT HAS EVERYTHING including AUTOMATIC WASHING SYSTEM!

MAKE ME A BULK MILK COOLER THAT HAS EVERYTHING!

The Mueller Model "OH" with HiPerForm cooling, Mueller-Matic Automatic Washing System, and built-in freeze protection control is the most advanced bulk milk cooler in the world. The nation's most progressive dairymen are using it. Shouldn't you be?



THE MUELLER MODELS OH, MHL, AND MW WITH HIPERFORM MAKE ALL OTHER BULK MILK COOLERS OBSOLETE SEE THE MUELLER NEW MODELS ★ 500 MW ★ 600 MW

The "MW" is one of the Lowest pouring Height Bulk tanks. Check with us all the new features of the "MW" bulk tank.

If you are in the market for a bulk milk cooler and you don't check all the advantages of the Mueller "OH", "MHL", and "MW" you may be buying an obsolete cooler.

USED TANKS

| | | | |
|---------------------|--------------------------------------|-------------------|--------------------|
| 300 Gal. Gir(SOLD) | 425 Gal. Esco | 800 Gal. Jamesway | 400 Gal. Dar-Kool |
| 2-500 Gal. Girton | 350 Gal. Es(SOLD) | 500 Gal. Jamesway | 500 Gal. Dari-Kool |
| D-4 400 Gal. Girton | 1 (2)-400 Gal. damaged tanks - cheap | | 500 Gal. Milkeeper |

ASK US TO SEE A **MUELLER FRP HEATER** IN OPERATION, RIGHT ON THE FARM.

QUEEN ROAD REFRIGERATION

Box 67, Intercourse, PA 17543
Phone: John D. Weaver - 717-768-9006 or 768-7111
or Answering Service - 717-354-4374

24 HOUR SERVICE

