

# Chester County DHIA

(Continued from Page 113)

Christ L. Stoltzfus						
Laurie	3	5 7	288	17,812	4 5	803
Leon D. Kurtz						
Karol	3	4 4	305	19,717	4 1	799
J. Raymond Harnish						
Rebecca	3	5 6	305	21,308	3 7	797
Pepper	3	6-6	305	22,897	3 4	786
Horns	3	6 10	287	19,175	3 8	737
Peg	3	3-9	305	21,213	3 4	728
George Steele & Sons						
#112	3	3 1	292	16,309	4 9	797
David Walton						
Lenore	3	7-9	294	15,934	4 9	779
Janis	3	4-2	305	19,777	3 9	762
Salyann	3	9 8	305	20,829	3 5	725
Kauffman Bros						
Joanie	3	4 10	305	18,934	4 1	777
Phyllis	3	2-1	305	19,592	3 6	708
H & R Mason						
#26 C	3	6-1	305	22,290	3 5	774
J. Harold Bare						
#37	3	3 4	305	18,873	4 1	772
#10	3	5 9	305	20,849	3 6	745
Donald Hostetter, Jr						
Rocky	3	6 6	305	21,166	3 6	767
Charles H. Gable						
#244	1	4 7	305	16,578	4 6	766
#251	1	4 4	305	16,148	4 7	766
Wilkinson Farm						
#767	3	4-9	305	19,738	3 9	763
Arrossan Farms						
Belvder	1	6-7	291	18,930	4 0	759
Harynon	1	5-7	305	18,555	4 0	737

Merle J. King						
Connie	3	5-0	305	21,943	3 5	758
Linda	3	4-8	305	22,533	3 3	747
Salty	3	4-6	305	20,072	3 5	708
Lea	3	2-1	305	16,123	4 4	706
Rene	3	5-9	305	20,119	3 5	705
Harry Freese & Son						
Babs	3	6-9	305	18,580	4 1	757
Monitor	3	5-8	293	16,510	4 5	743
Earl Graybill						
Prudence	3	4-8	305	18,909	4 0	752
Simon Z. Zook						
#50	3	9-9	305	16,809	4 4	744
#112	3	8-9	305	18,821	3 8	709
#104	3	3-7	305	17,230	4 1	709
Elam Petersheim						
Beauty	3	4-11	294	20,442	3 6	743
Bertha	3	3-8	305	19,923	3 6	717
Paula	3	5-8	284	18,606	3 8	706
Samuel B. Acker						
#407	3	5-6	305	15,343	4 8	740
Jonas Z. King						
Lady	3	3-6	305	21,947	3 4	738
#124	3	6-10	282	18,379	3 9	722
Lloyd Mast & Sons						
#25	3	7-6	305	17,818	4 1	734
#19	3	6-0	305	20,826	3 4	714
#40	3	4-8	305	19,064	3 7	701
Harold R. Kulp						
Freda	3	6-7	305	19,050	3 8	730
William E. Parr, & Son						
#450	?	5-8	305	18,175	4 0	725
#97	?	6 6	305	19,579	3 6	710
#550	?	3 0	305	19,656	3 6	708
Walmoore						
#1046	3	2 11	291	19,536	3 7	721
#1034	3	3 0	305	21,511	3 4	700
Marsh Acres Farm						
#217	3	4 11	279	17,154	4 2	720
Joel C. Brown						
#202	3	7 1	305	21,702	3 3	719
Harold Umble						
Lesla	3	6-1	240	18,186	3 9	718
David Bartram						
#404	3	3-7	305	15,926	4 5	718
Herman Stoltzfus						
Penny	3	6-0	305	18,896	3 8	716
Howard Swavely, III						
#21	3	5-10	305	18,682	3 8	715
Walmoore #3						
#539	3	3-10	305	21,026	3 4	711
Dean Roland						
G 68	3	9-9	305	16,764	4 2	710
#35	3	8-9	305	16,239	4 4	700
Allen S. Hoover						
#57A	3	-	305	19,758	3 6	707

## Seminars set for Pa. dairy servicemen

EPHRATA - Dairy farmers operate what is perhaps the most complex of all farm enterprises. Because of the complexity of their work, most dairymen rely heavily on dairy servicemen, the people who represent their suppliers.

"Dairy servicemen provide farmers with more than goods and services. They are often a farmer's most important source of information about dairy advances," notes Donald W. Parke, executive vice-president of PennAg Industries Association, Ephrata.

PennAg is a trade organization with some 400 agribusiness members in Pennsylvania. Many of the group's member firms employ dairy servicemen who call on farmers daily.

To help those servicemen stay abreast of dairying trends, PennAg, Penn State and local agricultural extension offices are cooperating again this year in a series of Dairy Servicemen's Conferences scheduled throughout the state.

Each of the day-long seminars will begin at 10 a.m. and end at 3:30 p.m. Dates and locations are: August 7, Altoona, Holiday Inn; August 8, Meadville, Holiday Inn; August 9, New Stanton, Holiday Inn; August 13, Harrisburg, Host Inn; August 14, Lewisburg, Country Cupboard; August 16, Scranton, Holiday Inn East (Dunmore).

Penn State's Dr. Richard Adams pointed out that the programs are designed to be particularly useful to people who work with dairymen, such as feed salesmen, DHIA supervisors, artificial insemination technicians, milk inspectors, sanitarians, veterinarians and lenders. Adams added, though, that dairy farmers are more than welcome to attend the conferences.

The programs and speakers will be the same at all six locations. Topics to be covered, and the speakers, include: selenium and vitamin E for dairy cattle, R.S. Adams, Penn State; profit potential in dairying, S. A. Dum, Penn State; role of Production Credit Association in agriculture, PCA personnel; legislative and other concerns for Pennsylvania agriculture, PennAg personnel; managing the dairy farm for profit, S. A. Dum, Penn State; relationship of nutrition to reproduction in dairy cattle, R. S. Adams, Penn State.

The \$15 registration fee for the program covers all costs, including lunch. Registration forms are available from county agents or from PennAg Industries Association, PO Box 329, Ephrata, PA 17522, phone 717-733-2238.

xxx

Milk gives you one of the best combinations of high-quality protein, calcium, vitamins and minerals, and for less than 10 cents a glass.

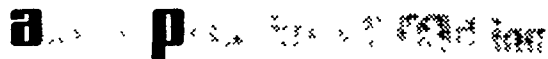
### Net profits with Almac's durable plastic bird control nets . . .

- Not affected by rot
- Black polypropylene — stable many years outdoors
- Roll or fold flat to store

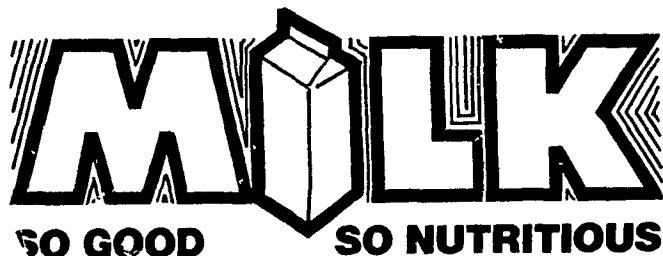
5/8" x 3/4" MESH

14 x 50.....	\$ 13.95*
14 x 75.....	20.95*
14 x 300.....	63.00**
14 x 500.....	95.00**
14 x 5000....	415.00
17 x 5000....	505.00

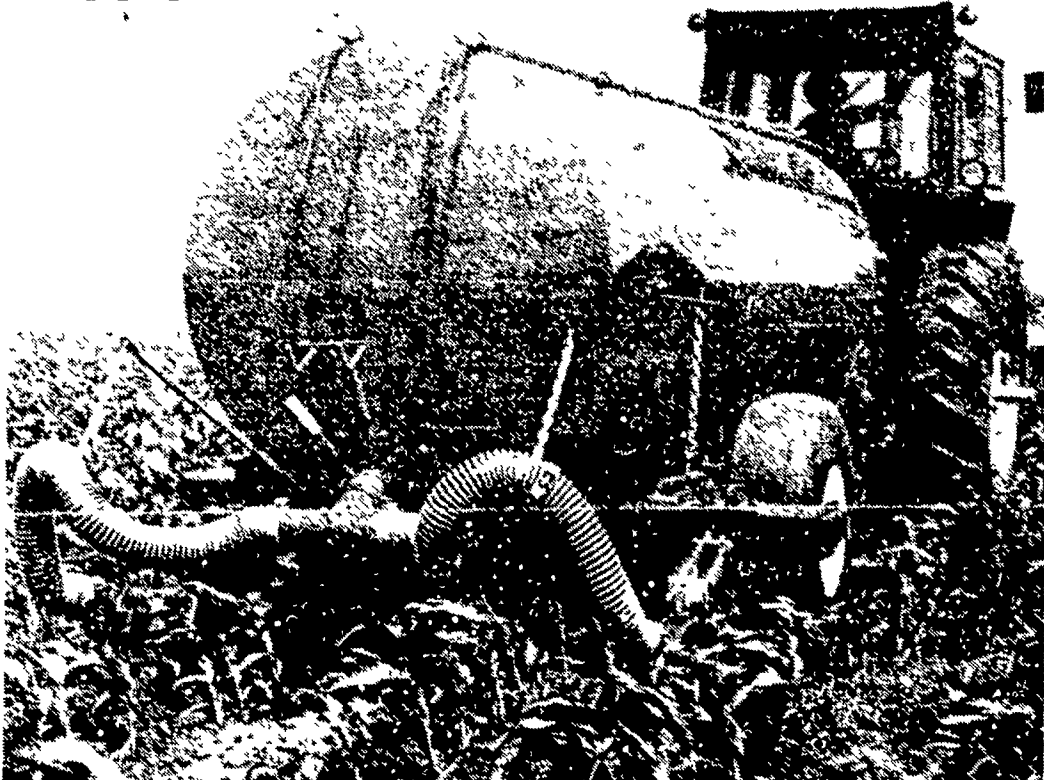
\*Add \$2 UPS \*\*Add \$3 UPS



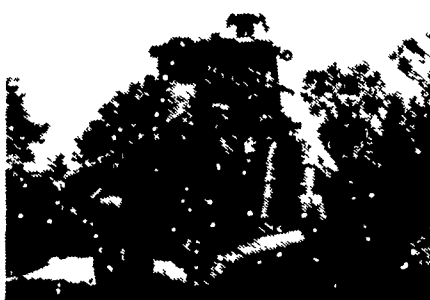
6311 Erdman Ave., Baltimore, Md. 21205  
301-485-9100 Va./W.Va. 1-800-638-5452 toll-free



### WHEN YOU CARE ENOUGH TO OWN THE VERY BEST



Clay Heavy Duty 5" Chopper Agitator Pump can fill a 3,200 gallon tank in 4 to 5 minutes. Perfect for average size pits and standard capacity tanks.



Clay Super 8" Chopper Agitator Pump is one of the biggest and best money can buy. Breaks up crusted manure and pumps it fast.

Research proves broadcasting manure on top of the ground and letting it lay there can result in substantial loss of immediately available nitrogen.

Clay offers a smarter way of doing things. Clay's Honey Wagon Injector System knives the liquid manure into the ground and smoothes over the trenches with spring loaded spoons, all in one pass.

It helps preserve more valuable nutrients by locking them into the soil. Reduces fertilizer costs while controlling odor, pollution and run off problems.

**EXTEND YOUR FERTILIZING SEASON**  
Only Clay offers adjustable wheel treads as standard equipment. The 800, 1500, and 2250 gallon Honey wagons will accommodate 30" to 42" rows. The 3200 gallon Honey Wagon Injectors adjust to accommodate rows 36" to 42".

Injectors let you inject manure in fields even after crops are up to lengthen your fertilizing season. Gives you more management flexibility.

**LIQUID COOLED PUMP LASTS LONGER**  
The internally mounted vacuum pump is liquid cooled to reduce heat build-up, the major cause of wear. Another Clay exclusive helps the Honey Wagon last longer.

**MORE TIME FOR OTHER JOBS**  
Clay Honey Wagons can cut costs and labor giving you more time for other jobs. And that's what smart management is all about! Get the full story from your Clay Dealer or write for complete details.



#### AUTHORIZED DEALERS

Robert Janney  
Cochranville, PA  
215-593-2365

W & J Dairy Sales  
Oxford, PA  
717-529-2569

J. H. S. Contractors  
RD 2, East Earl, PA  
215-445-4357

Elwood Bahn Builders  
York New Salem, PA  
717-792-1655

Earl Ebling  
Bethel, PA  
717-933-4269

Farmer Boy Products  
Myerstown, PA  
717-866-5692

Messick Farm Equipment  
Elizabethtown, PA  
717-367-1319

M & R Equipment  
New Park, PA  
717-246-1972

Maurer Trucking  
Pine Grove, PA  
717-345-4401

Strawser's Farm Supply  
Walnut, PA  
717-436-6992

John Leid & Son  
RD 3, New Holland, PA  
717-354-0484

Harold "Hal" Jamison  
Territory Manager  
Lancaster, PA  
717-569-2944