

# Cecil County Fair begins Monday

FAIR HILL, Md. — The Cecil County Fair will be held July 30 thru August 4 at the fairgrounds located on Route 273, here.

Parking is free, admission fee — weekly pass \$5; \$1 daily; \$2 fee for Friday and Saturday; 4-H & FFA

member - free; over 65 yrs. young - half price.

Special activities include a rodeo at 7:30 p.m. Friday,

August 3; a demolition derby, tractor pulling contests, horseshoe pitching contests, and livestock

shows. Entries are still being accepted.

Entry blanks and information for entering the demolition derby are available from George Underwood at 301-398-1541.

The Rodeo at Fair Hill starts at 7:30 p.m., Friday, August 3 with slack time beginning at 3 p.m. All the professional events of last year will be back plus saddle bronc riding, team roping and Jr. bull riding.

This IRA sanctioned rodeo was selected in an effort to give those local people wishing to enter a better opportunity to do so without sacrificing professional entertainment.

Local contestants can enter without an IRA card if they have a mailing address within a 25 mile radius of the fairgrounds. Entries for the rodeo will be taken Monday, July 30 from 10 a.m. to 6 p.m. at (717) 225-5810. All entries, both locals and card holders, must call that number during those hours and keep trying until they get through. Locals should have hospitalization insurance, but it is not mandatory.

Tractor pulling events are scheduled as follows:

On Monday, July 30th (opening night) with garden tractor class to be held at 8 p.m. Open to Cecil County residents only; entry fee - \$5. The 4-wheel drive pickup

class will be held at 9 p.m. The entry fee is \$10. Weigh in time for both is from 5 to 7 p.m. Prizes will be awarded.

Tuesday, July 31, the large tractor pull will be held which is open class and includes field and modified tractors. The entry fee is \$10; weigh-in time from 4 to 6 p.m. Prizes will be awarded. A 4-wheel drive tractor pull will be held if there are enough entries.

Anyone interested in entering call William Haines 301-658-5846.

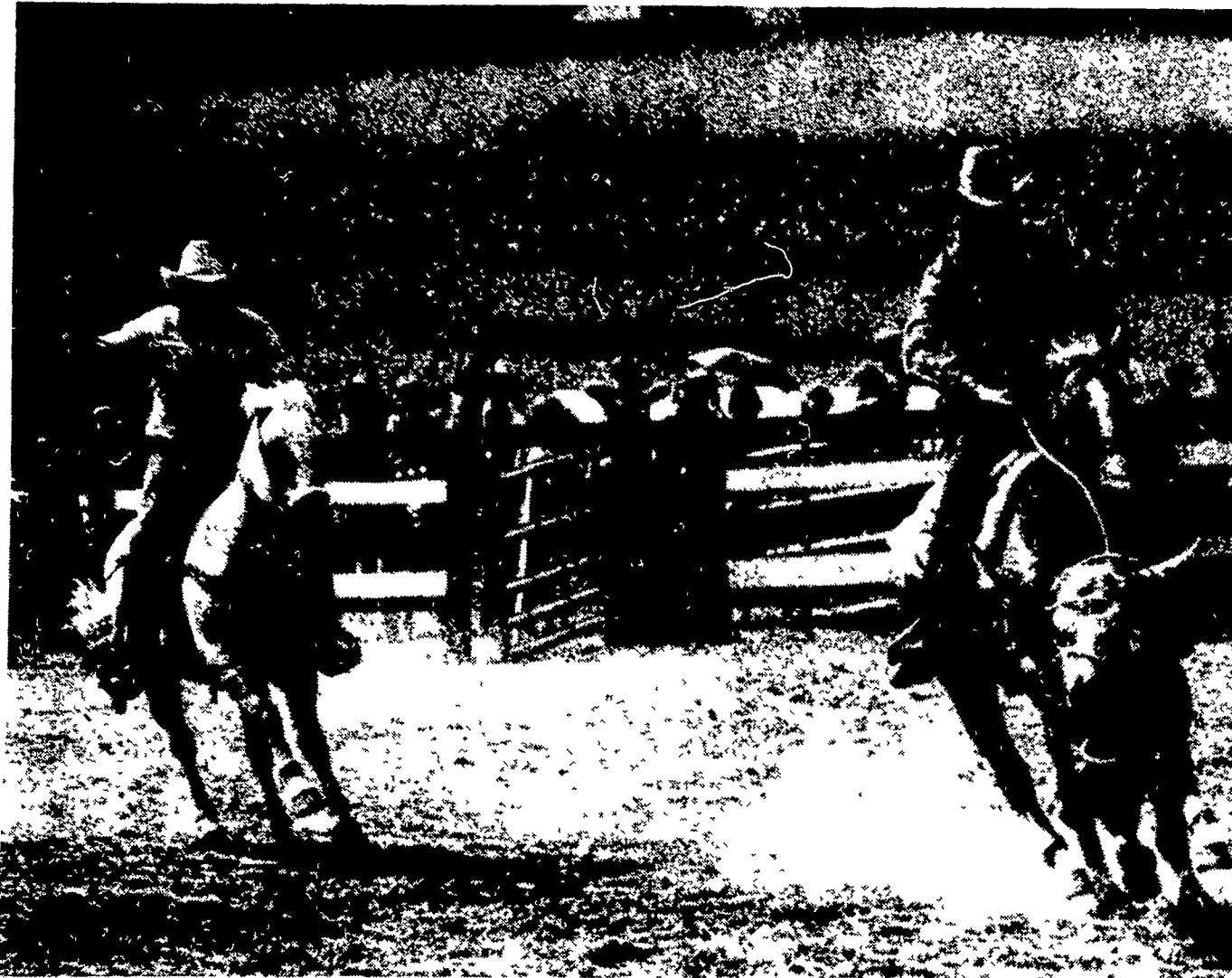
## HORSESHOE PITCHING CONTEST

The first Cecil County Horseshoe Pitching Championship Contest will be held on the fairgrounds, Thursday evening, August 2 at 8 p.m. This will be an annual event open to all Cecil County residents. An entry fee of \$1 is to be paid at registration time (7 p.m.) at the Fair Office which is located south of the grandstand.

There will be four divisions:

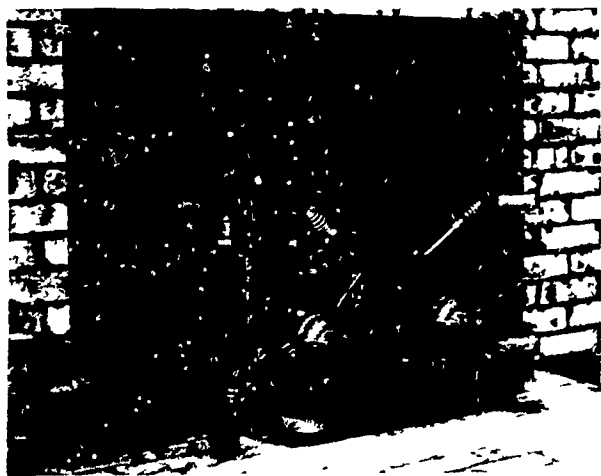
- 1 - Men 19 yrs. & under
- 2 - Men over 19 yrs. of age
- 3 - Women 19 years and under
- 4 - Women over 19 yrs. of age

The winner in each division will receive a trophy and \$25; second prize will be \$10. A standard set of rules will be posted.



The rodeo at the Cecil County Fair will feature professionals, but will allow anyone from the community to give it a whirl.

## ALASKA KODIAK WOODBURNERS



### FIREPLACE INSERT

- Fits into your existing fireplace complete with all parts, including blower and instructions for easy installation
- Specifications (Large)
  - Burning time 10 to 12 hours Heating capacity with blower, 2,500 Sq ft, without blower 2,000 Sq ft
  - Fireplace minimum opening 23 1/2" high x 32 1/4" wide x 15 1/4" deep

MANY OTHER MODELS AVAILABLE



**CHESTER B. NOLT**  
30 S. Hershey Ave., Bareville  
Leola, Pa. 17540  
717-656-6898

**STORE HOURS:**  
Closed Mon. & Tues.  
Open Wed., Thurs., Fri. 10 to 8  
Sat. 10 to 4  
Other hours by appointment

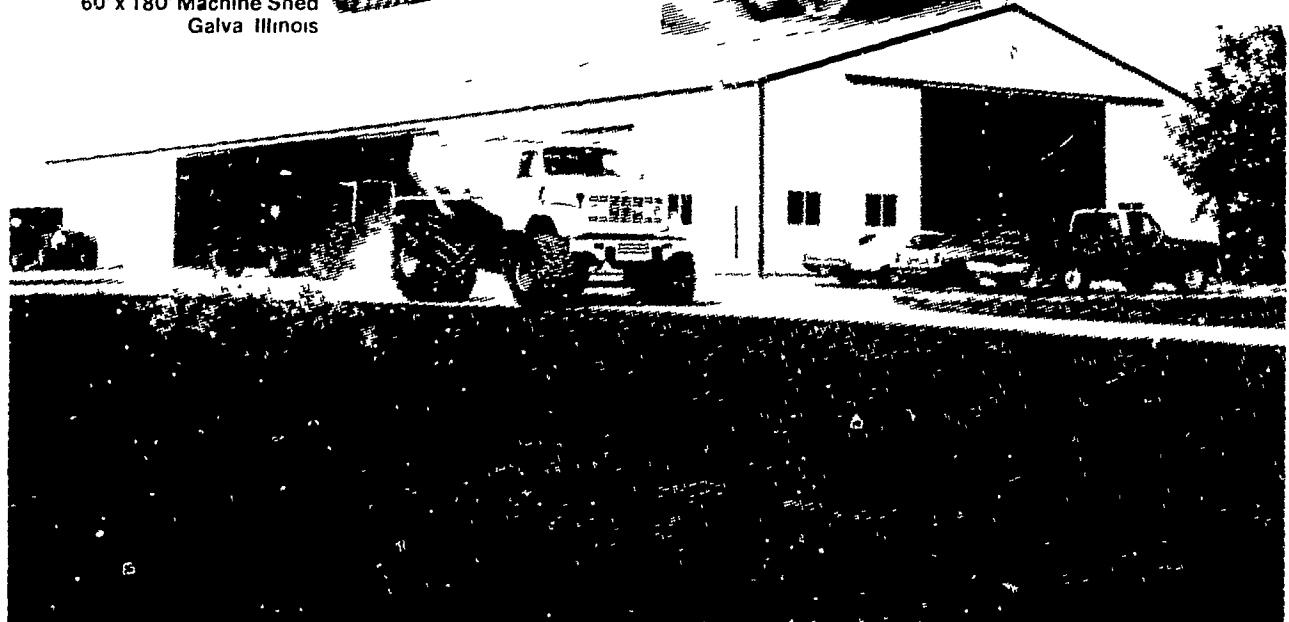
# The center of a total operation...

Morton Buildings are designed with the modern farmer in mind, because activity can be centralized in one area thereby establishing controlled efficiency. A Morton Building can be customized to include concrete floors, insulation, windows



skylights and huge doors all of which make it ideal for a repair shop, equipment storage, office, as well as grain storage. If a total progressive operation is your plan contact the nearest Morton Sales office — (listed below) today!

ENDRESS BROTHERS' 60' x 180' Machine Shed Galva Illinois



## MORTON BUILDINGS NO. 1 CHOICE OF FARMERS

Serving Central Pa and Maryland  
RD 4, Box 34A  
Gettysburg, PA 17325  
Ph 717-334-2168

Serving Eastern Pa. and New Jersey  
Box 126,  
Phillipsburg, NJ 08865  
Ph: 201-454-7900

Serving North Central Pa. Area  
P.O. Box 937, State College, PA 16801  
Ph: 814-383-4355

Send information on MORTON BUILDINGS Have your salesman phone me for an appointment

- Garages Shops
- Machine Sheds
- Horse Barns
- Grain Storage
- Hog Confinement
- Cattle Confinement
- Free Stall Barns & Silo Feed Rooms
- Livestock Barns

Name \_\_\_\_\_  
Address \_\_\_\_\_  
Telephone No \_\_\_\_\_

LF