

Livestock market and auction news

Lancaster Farming, Saturday, July 28, 1979-13

Lancaster Weekly

(Continued from Page 2)

RETURNED TO FARM: Bulk 90-130 lbs. holstein heifers 120.00-150.00, few late 155.00-175.00, few 80-100 lbs. 74.00-100.00; bulk 90-115 lbs. holstein bulls 74.00-90.00, around 100 head 100-115 lbs. 100.00-110.00.

Baltimore USDA

July 23, 1979

CATTLE 275: Few Sales slaughter steers and heifers 2.00-2.50 lower. Cows 4.00-5.00 lower. Bulls 4.75-5.50 lower. Supply 20 per cent slaughter steers and heifers, 60 per cent cows, balance few feeders and bulls.

SLAUGHTER STEERS: Choice 3-4 1000-1190 lbs. 62.75-65.25; Standard and Low Good 2-4 1000-1400 lbs. 52.75-56.10.

SLAUGHTER HEIFERS: Few Choice 3-4 870-900 lbs. 61.75-62.25; Good & Choice 2-4 830-1100 lbs. 60.25-60.75; Good 2-3 750-1000 lbs. 57.00-60.00.

COWS: Utility 2-3 and

Commercial 3-4 44.00-49.50; few 50.00-50.50; Cutter 39.75-45.75.

BULLS: YG 1-2 1020-1915 lbs. 55.00-61.85.

FEEDER CATTLE: Lot Choice steers 735 lbs. 74.25.

HOGS: Barrows & Gilts compared with last Wednesday 75 cents to 1.00 higher. US 1-2 200-240 lbs. 40.75-41.00; US 2-3 230-260 lbs. 39.75-40.75.

SOWS: 1.50-2.00 lower. US 1-3 300-600 lbs. 25.00-26.00.

VEAL AND CALF AUCTION 50: Few Choice 125-190 lbs. vealers 89.00-100.00; Good and Choice 100-110 lbs. 72.00-80.00; 90-100 lbs. 57.00-69.00; several 65-75 lbs. 45.00-49.00. Calves returned to farm 64.00-86.00; couple Holstein heifers 100-110 lbs. 125.00-129.00.

SHEEP AUCTION: Lot Choice spring slaughter lambs 112 lbs 55.75.



SAVE \$\$\$

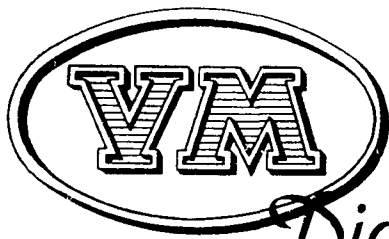
Ask Us For Repowering

REPOWER WITH VM DIESEL

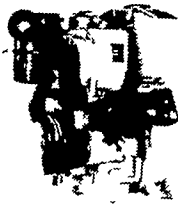
SAVE \$\$\$

Ask Us For Repowering

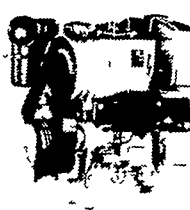
Harvesters, Haybines, Tractors, Compickers, Balers, Hydraulic Systems, Corn Binders, Choppers



1050 SU SERIES



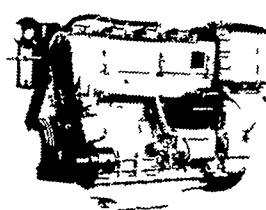
2800 R.P.M.
22 SAE HP
20 DIN HP



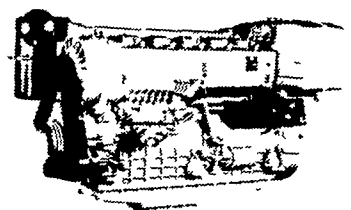
2800 R.P.M.
44 SAE HP
40 DIN HP



2800 R.P.M.
66 SAE HP
60 DIN HP



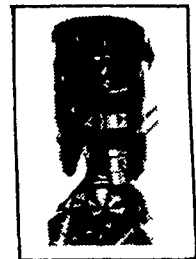
2800 R.P.M.
88 SAE HP
80 DIN HP



2800 R.P.M.
132 SAE HP
120 DIN HP

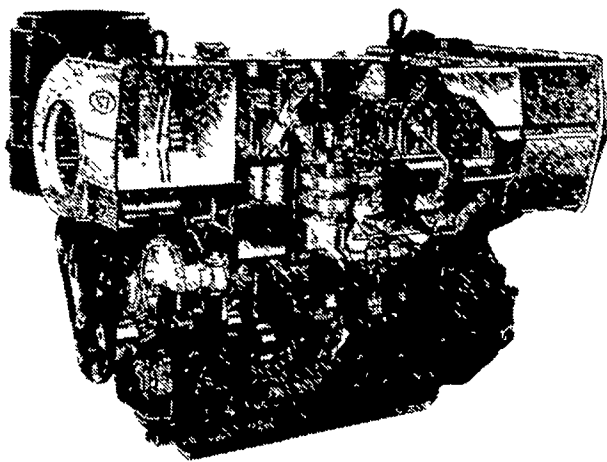
THE NEW AND REVOLUTIONARY FAMILY OF ENGINES

All New HR Series

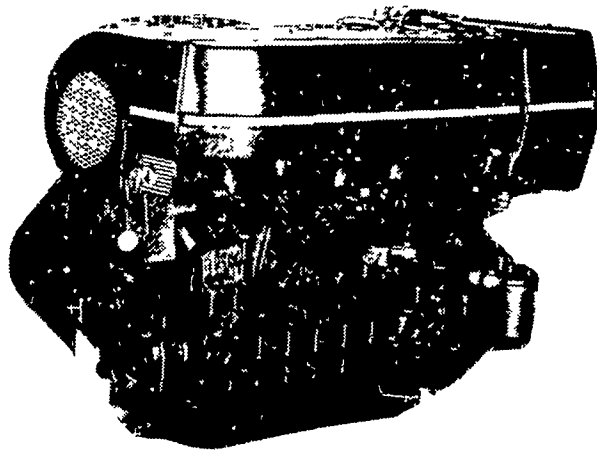


Oil Cooled Jacket

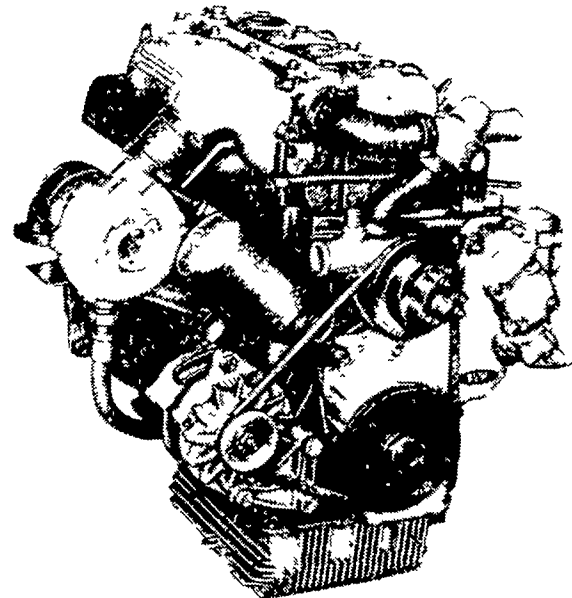
OIL COOLED



AIR COOLED



WATER COOLED



General Features:

- Integrally cast cylinders with inserted and removable wet type cylinder liners
- Light hypereutectic alloy pistons
- Extra-resistant steel connecting rods alloyed with special alloy head bearings
- Surface hardened steel crankshaft
- Drop-forged, casehardened and tempered steel camshaft
- Anti-friction cast-iron tappets alloyed
- Cast-iron tunnel type crankcase
- Rotatory injection pump with mechanical governor

- Force-feed lubrication with built-in circuit and lobe type pump
 - Diaphragm pump feed
 - Oil and fuel filters with integral type element.
- Special structure and patented engine with consequent increases in performance and easier operation with low weight/output ratio low smoke emissions.
- Engine based on a design "modulus" formula which allows a maximum parts standardization and interchangeability.

Ask For Horsepower Ranges Of Above

THE "RIGHT FROM THE START" DIESEL ENGINE LINE FOR FAULTLESS PERFORMANCE

USED DIESELS

- (3) SR 2 Lister
- (3) DVA 1500 Slanzis
- ST 2 Lister
- 1 Cylinder Deutz
- F6L - 91Z Deutz

QUEEN ROAD REFRIGERATION

Box 67, Intercourse, PA 17534

Phone: John D. Weaver - 717-768-9006 or 768-7111
or Answering Service - 717-354-4374

