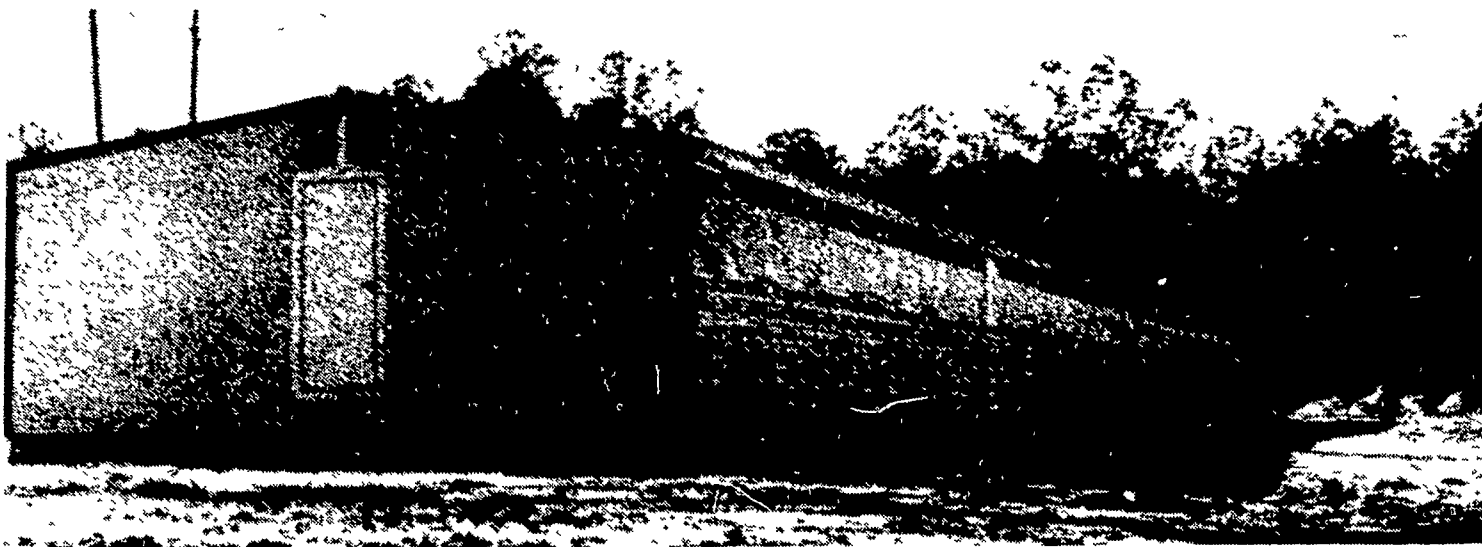


FARMSTEAD INDUSTRIES OF VIRGINIA

Open house

SATURDAY, JULY 28th

10:00 A.M. TO 4:00 P.M.



HOSTED BY

HOWARD & BETTY LONG AND SONS

RD#3, COLUMBIA, PA. PHONE 717-684-8690

REFRESHMENTS

FARM LOCATION: 1½ Miles from Prospect Rd. Exit from U.S. Rte. 30 Lancaster-York Bypass. Take Rte. 462 to Oswego Rd. Turn left at Musser Dairy to Franklin Rd. Follow arrows to farm.

REFRESHMENTS

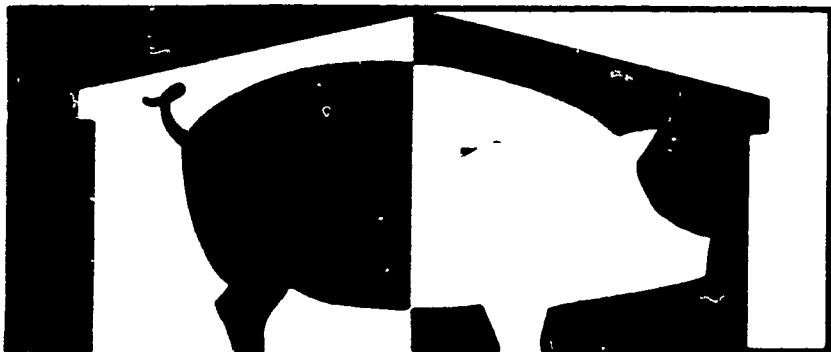
FEATURING

- ★ 24 CRATE FARROWING UNIT
- ★ DOUBLE DECK PRE-NURSERY
- ★ NURSERY

- ★ CONFINEMENT BREEDING AREA
- ★ FREE STALL GESTATION CRATES

NOT RESPONSIBLE FOR ACCIDENTS

FARMSTEAD INDUSTRIES OF VIRGINIA



Hogs like the FARMSTEAD life

STAR ROUTE BOX 4-C
EMPORIA, VIRGINIA 23847

FARMSTEAD DESIGN ENGINEER:
MR. CHUCK ALVIS
Available For Consultation

SERVEYING BY:
DOUGLAS R. STONER
RD2, Lancaster
717-872-4097

EXCAVATING BY:
ANDREWS EXCAVATING
Willow St. 717-464-3329

MONITORING SYSTEMS BY:
SECURITY SYSTEM, UNL.
Salsbury, MD
301-546-4916

PIT MASONRY BY:
JAMES RETTEW
RD1, Washington Boro
717-684-7580

LOCALLY REPRESENTED BY:
DONALD W. BROWN
Landenburg, PA
215-255-4832