

Livestock market and auction news

Lancaster Weekly

(Continued from Page 2)

SLAUGHTER HEIFERS: Choice 2-3 850-1050 lbs. 61.00-65.50, few early part of week 65.50-67.00; Good 2-3 800-1050 lbs. 57.50-62.00.

COWS: Utility and Commercial 1-3 43.75-47.00, few 47.00-49.75; Commercial 3-4 39.50-44.00; Cutter 1-2 42.75-46.50, few 46.50-47.75; Canner and low Cutter 38.00-42.00.

BULLOCKS: Good 900-1150 lbs. 55.00-59.00, few Choice 59.00-64.25.

BULLS: Yield Grade 1 1100-1900 lbs. 57.70-62.00, few early part of week 62.00-67.50; Yield Grade 2 1000-1400 lbs. 54.00-58.50, few 950-1000 lbs. 52.00-54.00.

VEAL CALVES: Vealers uneven, Choice and Prime 3.00-8.00 lower; high Good and low Choice 65-125 lbs. 10.00-15.00 lower, with sales early part of week off as much as 20.00.

VEALERS: Prime 280-320 lbs. 95.00-104.00, few

104.00-108.00; Choice 160-300 lbs. 85.00-98.00, 120-160 lbs. 83.00-92.00; high Good and low Choice 140-220 lbs. 82.00-98.00, 90-120 lbs. 72.00-85.00, with about 150 head early part of week 47.00-60.00, 65-90 lbs. 54.00-70.00, around 65 head Standard and Good 60-75 lbs. 20.00-32.00.

RETURNED TO FARM: 50 head 90-115 lbs. holstein heifers 122.00-138.00, few head 140.00-165.00, 12 head 80-95 lbs. 106.00, 110 head 100-115 lbs. holstein bulls 117.00-121.00, bulk 90-125 lbs. 95.00-105.00, few 105.00-111.00.

Leesport Auction

Leesport, Pa.
July 18, 1979

CATTLE 195. Compared with last Wednesday's market, slaughter steers \$1 to \$4 lower, most decline on Standard & Good. Slaughter cows \$4 to \$7 lower. Choice 1000-1200 lbs. slaughter steers 62.50-64.85, one at 65.75, Good 58.75-62.85,

Standard 56.10-58.75. Few Choice 750-900 lbs. slaughter heifers 60.50-62.75. Utility & Commercial slaughter cows 45.00-47.50, few to 48.60, Cutters 42.00-46.50, Canner & Low Cutter 40.00-43.85, Shells down to 38.00. Choice slaughter bullocks 59.35-64.75. Yield Grade #1 1100-1700 lbs. slaughter bulls 58.00-60.35, few to 65.00; few yield grade #2 1030-1540 lbs. 45.00-57.00. Few Choice 350-600 lbs. feeder steers 82.00-98.00, one lot Good & Choice 830 lbs. at 69.00.

CALVES 174. Vealers grading Standard & Good \$10 to \$12 lower. Choice vealers 85.00-94.00, few Good 81.00-86.00, few Standard & Good 110-130 lbs. 70.00-75.00, 90-110 lbs. 60.00-72.00, few 70-85 lbs. 50.00-60.00, few Utility 55-90 lbs. 40.00-54.00. Farm calves, holstein bulls 90-115 lbs. 80.00-111.00; holstein heifers 90-130 lbs. 110.00-142.50, one at 157.50.

HOGS 341. Barrows & gilts \$1.50 to \$2 lower. US No. 1-2 200-245 lbs. barrows & gilts 42.00-42.85, No. 1-3 190-255

lbs. 40.10-42.25, few No. 2-3 260-295 lbs. 38.60-40.25, few No. 1-3 175-180 lbs. 38.00-41.00. Sows \$1 lower. US No. 1-3 300-520 lbs. sows 30.00-32.00, couple to 33.25, few No. 2-3 450-560 lbs. 22.00-29.00. Boars 25.00-28.00.

FEEDER PIGS 276. US No. 1-3 25-55 lbs. feeder pigs 60.00-69.00 cwt., few No. 1-3 55-95 lbs. 51.00-64.00, few Utility 20-30 lbs. 59.00-60.00 cwt.

SHEEP 17. Few Choice 70-105 lbs. spring slaughter lambs 55.00-61.00, one at 91.00, few Good & Choice 65-85 lbs. 38.00-46.00. Couple Slaughter ewes 23.00 and 25.00.

Chambersburg Auction

Livestock Auction
Market Report
July 19, 1979

CATTLE 260. Compared with last Thursday's market, slaughter steers \$2.00-4.00 lower. Sl. cows 4.00-7.00 lower, few High Choice & Prime YG 1150-1260 lbs. sl. steers 62.50-64.10; Choice YG 900-1260 lb. 61.25-64.50, 1 at 66.25; few Good 57.50-63.50, couple 67.00; Standard 54.50-57.75; few Utility 49.75-53.25. Few Choice YG 900-1125 lbs. sl. heifers 69.50-69.50; few Good 54.00-59.10. Utility & Commercial sl. cows 45.00-51.00 few 53.50, Cutters 43.75-48.00 few 49.50; few Canner & L. Cutter 40.85-44.75, Shells down to 38.00. Few Yield Grade #1, 1800-1930 lbs. 59.50-

65.00, few Yield Grade #2, 925-1700 lbs. 52.60-54.75.

FEEDER CATTLE: Few Medium and Good 315-675 lbs. 64.50-74.50. Few Medium & Good 400-500 lbs. heifers 62.00-69.00.

CALVES 440. Vealers grading Good and Choice 4.00-8.00; Standard and low Good 10.00-12.00 lower. Few Prime vealers 107.00-113.50, Choice 103.00-108.00 few 124.00 Good 95.00-99.00; Standard & Good 90-110 lbs. 74.50-78.50; 70-90 lbs. 70.00-76.00, Utility 60-90 lbs. 53.00-72.00.

FARM CALVES: Hol. Bulls 100-125 lbs. 95.00-131.00, 90-100 lb. 75.00-90.00. Hol. Heifers 90-130 lbs. 130.00-175.00, 1 at 201.00.

HOGS 33. Barrows and gilts 50-75 cents lower. 1 lot US No. 1-2 210 lbs. barrows & gilts at 40.75, No. 1-3 210-245 lbs. 39.50-40.50. SOWS few US No. 1-3 500-630 lbs. sows 26.50-28.25. 1 BOAR at 25.50.

FEEDER PIGS 71. US No. 1-3 35-50 lbs. feeder pigs 18.00-25.50 per head.

SHEEP 30. Spring lambs 1 lot Choice 88 lbs. at 53.50, Good 55-65 lbs. 54.00-55.00, Couple Slaughter ewes at 25.00.

Western Maryland Market

Western Maryland
Stockyards, Inc.
Westminster, Md.
July 17, 1979

BUTCHER CATTLE: Fat Steers not enough to compare to last week; Good

Holsteins 58.00-62.75; Standard 54.00-58.00; Heifers Standard to 51.00; Cows Demand Weak! Prices 6.00 lower! Good Cows few 49.00-51.00; Standard & Utility 46.00-48.00; Canners 43.00-46.50; Shelly 42.00 Down; Bulls Top 995 lbs. at \$74.50. Bulk 1150-1300 lbs. \$58.50-64.00.

BUTCHER HOGS: Light run, no top hogs offered. 220-225 lbs. 3's to 38.75; 230-260 lbs. 3's to 36.75; 160-170 lbs. to 34.00; Heavy Weights 300-400 lbs. \$24.00-29.00; Sows 350-600 lbs. 22 75-24.50.

VEAL CALVES: 6.00-8.00 under last week. Tops, to 98.00; Good-Choice 85.00-98.00; Standard 75.00-85.00; Light calves 72.00-84.00; Weak & Rough 71.00 Down.

RETURNED TO FARM: Holstein Heifers 85-100 lbs. 100.00-140.00; Holstein Bulls 105-125 lbs. few 90.00-97.00; Bulk 85-105 lbs. 83.00-86.00.

LAMBS: Few 6.00-8.00 lower. Mostly Good & Choice 75-105 lbs. \$50.00-55.00; Medium 65-75 lbs. 46.00-48.00; Feeders 54 lbs. at \$51.00.

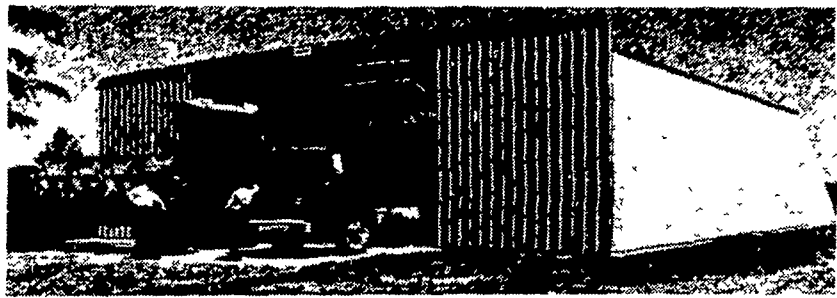
STOCK CATTLE: Light run, mostly steady prices. Stock Steers 70.00-92.00; Stock Heifers 55.00-83.00, light holsteins to 101.00; Stock Bulls 60.00-66.00.

PIGS AND SHOATS: By the head 20-30 lbs. 16.00-21.00; 30-50 lbs. 20.00-28.00; 50-75 lbs. 29.00-33.00.

BUTLER CLEAR SPAN BUILDING

1-PER COUNTY
Display Buildings
Only

Buy a building at list price
and get twice the length
for only 50% more



FARMSTED I

30'x50'x11'

LESS THAN
\$4000

FARMSTED I
GALV.
ROOF & WALLS
16'x10' Double Slide
Door

40'x50'x14'

LESS THAN
\$5000

FARMSTED I
GALV.
ROOF & WALLS
20'x13' Double Slide
Door

50'x50'x16'

LESS THAN
\$7000

FARMSTED I
GALV.
ROOF & WALLS
24'x15'7" Double Slide
Door

60'x50'x16'

LESS THAN
\$8500

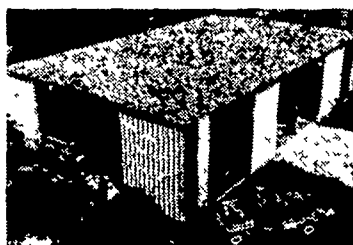
FARMSTED I
GALV.
ROOF & WALLS
30'x15'3" Double Slide
Door

ALL BUILDINGS F.O.B.
ANNVILLE, PA.
(Buildings not equipped as shown)

VARIOUS SIZES
HEIGHT & WIDTH
AVAILABLE

... Special Grain Storage Buildings Available

ALSO



FARMSTED II
AND



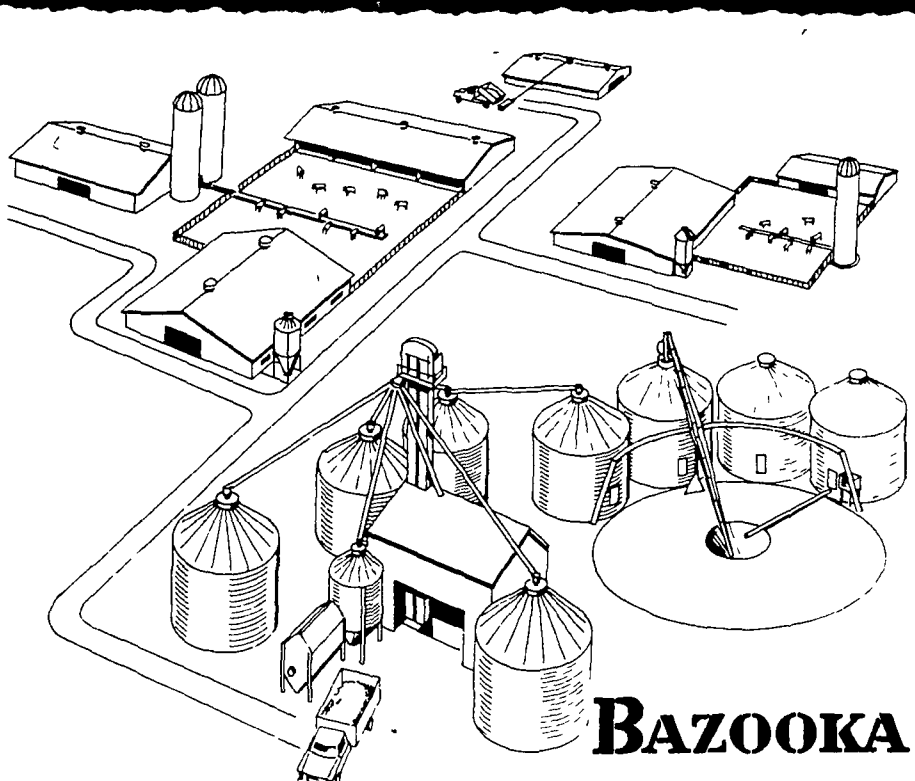
AG-MASTER 2:12

P.E. HESS,
BUTLER MFG. CO
Box 337, Oxford, PA 19363

Name _____
Address _____
City _____
State _____ Zip _____
Phone _____
(include area code) LF

CALL YOUR BUTLER AGRI-BUILDER TODAY

Beatty & Nelson Contractors 717-677-9310 O.A. Newton & Son Co. 302-337-4211
C.A.M. Sales Inc. 717-253-1612 J. Lewis & Family 717-837-3201
P.E. Hess 717-337-1111



BAZOOKA

We'll help you put it together

Tell us what you need and we'll design and install a complete new system for you or modernize your present set-up

Bazooka augers and U-trough conveyors keep your systems going longer smoother safer

H
HERSHEY EQUIPMENT
COMPANY, INC.

SYCAMORE INDUSTRIAL PARK
255 PLANE TREE DRIVE
LANCASTER PA 17603
(717) 393-5807