

Livestock market and auction news

Hay Markets

Regional Hay

July 16, 1979
(All hay No. 2 and better, prices paid by dealers at the farm & per ton.)
Hay & Straw slow, steady to weak.
Alfalfa 40.00-50.00; Mixed hay 30.00-45.00; Timothy hay 30.00-40.00; Straw 35.00-50.00; Mulch 10.00-30.00.

Good's Hay

Leola, Pa.
Wednesday, July 17
Total 49 loads. All prices per ton, unless otherwise noted.
Alfalfa 69-77, 1 load 42; timothy hay 39-52; mixed hay 42-72, mostly 50-65; straw 49-58; corn 93-99; oats, 1 load 1.30 per bushel; mulch hay, 1 load 30.

Middleburg Auction

Middleburg, Pa.
July 17, 1979
CATTLE 248. Compared with last Tuesday's market; High Choice & Prime slaughter steers 62.00-67.10, Choice 60.00-66.85, Good 58.00-60.00, Standard 52.00-58.00. Choice slaughter heifers 60.00-65.75, Good 55.00-60.00, Standard 50.00-55.00, Utility 48.00-50.00. Utility & Commercial slaughter cows 44.75-47.85, one at 50.25, Cutters 43.00-45.75, Canner & Low Cutter 38.00-43.00, Shells down to 35.00. Choice slaughter bullocks 65.00-70.25, Good 60.00-65.00, Standard 55.00-60.00. Yield Grade #1 1200-1865 lbs. slaughter bulls 62.00-68.10; yield grade #2 800-1200 lbs. 55.00-62.00.
CALVES 120. Prime vealers 110.00-115.00, Choice 100.00-110.00, Good 90.00-100.00, Standard & Good 90-100 lbs. 80.00-95.00, 70-90 lbs. 65.00-80.00. Farm calves, holstein bulls 95-115 lbs. 100.00-115.00; holstein heifers 80-150 lbs. 100.00-202.50.
HOGS 589. (Monday, July 16, 1979). US No 1-2 200-230 lbs. barrows & gilts 42.00-43.10, No. 1-3 190-250 lbs. 41.50-42.20, No. 2-3 200-270 lbs. 38.50-41.50. US No. 1-3 300-600 lbs sows 31.00-34.00. Boars 200-760 lbs 27.00-29.00.
FEEDER PIGS 334. US No 1-3 10-20 lbs feeder pigs 12.00-20.00 per head, No 1-3 20-40 lbs 20.00-35.00, No 1-3 40-60 lbs 35.00-42.00 per head
SHEEP 36 Choice 90-125 lbs sprung slaughter lambs 60.00-68.50, Good 40-75 lbs 45.00-58.00 Slaughter ewes 25.00-35.00

Green Dragon

Ephrata, Pa.
July 13, 1979
Prices per ton:
Total: 31 loads hay & 13 loads straw.
Alfalfa couple 69.00 and 74.00; Timothy 42.00-61.00; Mixed hay 36.00-59.00; Straw 48.00-64.00, one at 70.00; Ear Corn, 13 loads 85.00-97.00.

New Holland Hay

Monday, July 16
New Holland Sales Stables
Total 55 loads. All prices per ton unless otherwise noted.
Alfalfa 60-72; mixed hay 44-75; timothy 55-71; straw 58-73; corn 87-102.

Shenandoah Valley Livestock

Harrisonburg, Va.
July 14, 1979
STOCKER, FEEDER, AND SLAUGHTER CATTLE: Good Light Steer Calves 95.00-100.00; Medium 90.00-95.00; Plain 85.00 and down; Good Heavy Steers 80.00-85.00; Medium 75.00-80.00; Plain 70.00 and down; Holstein Steers 58.00-68.00; Slaughter Steers 65.75 and down; Good Light Heifer Calves 75.00-80.50; Medium 70.00-75.00; Plain 65.00-70.00; Good Heavy Heifers 65.00-69.00; Medium 60.00-65.00; Plain 55.00 and down; Slaughter Cows 49.00-54.00; Utilities 43.00-49.00; Canners & Cutters 42.00 and down; Milk & Stock Cows 94.00 and down; Stock Bulls 60.50-76.00; Slaughter Bulls 60.75-68.25.
CALVES: Veal Calves 114.00 and down; Baby Calves 115.00 and down.
SHEEP & LAMBS: Choice Blue O 67.00; Good Red O 59.00; Feeder Lambs 57.00-61.50; Slaughter Ewes 28.00 and down; Stock Ewes 97.50 and down. All Buck Lambs Discounted \$1.00.
HOGS. Top 40.00; Heavy 30.00-37.50; Medium 38.00; Light 36.00; Sows 25.00-28.75; Boars 23.00.

Sechrist Auction

Stewartstown, Pa.
July 16, 1979
CATTLE 52. Steers - Good Choice 63.00-66.00; Good 60.00-63.00; Holstein Good 60.00-62.00; Standard to Good 55.00-59.75. Heifers - High Choice and Prime 62.00-65.00; Good to Choice 57.00-61.75; Holsteins Good 52.00-57.50. Bulls - Good and Choice Commercial 60.00-65.00; Standard to Good 55.00-60.00. Cows - High Yearling Commercial 48.00-51.50; Cutters 46.00-48.00; Canners Low Cutters 43.00-46.50; Shells 40.00-44.00.
CALVES 127. Calves - Choice and Prime 105.00-120.00; Good and Choice 90.00-100.00; Standard and Good 80.00-90.00; Bulls Good 110-120 lbs. 95.00-120.00; Hfrs. 90-120 lbs. 80.00-140.00; Culls 60.00-95.00.
HOGS 366. Hogs - by private treaty only. Sows - 250-375 lbs. 30.00-34.50; 400-500 lbs. 28.00-30.00. Boars - 300-500 lbs. 27.00-31.00.
SHEEP 16. Lambs - Good to Choice 58.00-68.00; Medium and Good 50.00-58.00. Ewes 26.00-34.00.
Private Treaty Fat Hogs, Select No. 1 and 2, 190-215 lbs. 42.00-42.50.
Private Treaty Fat Hogs, No. 1 and 2, 190-220 lbs. 41.50-41.75.
Private Treaty Fat Hogs, No. 1 and 3, 190-220 lbs. 40.00-41.00.

Four States Auction

Four States Livestock Sales, Inc.
Wed., July 11, 1979
SLAUGHTER: Fed Steers & Heifers - mostly steady prices. Choice none; Good 62.00-64.00; Medium 61.00 Down. Heifers Choice 62.00-64.00; Good 59.00-61.00; Medium 58.00 Down. Cows - good run, \$2.00 under last week. High Yield 57.00-59.75; Average 53.00-56.00; Big Middle 49.00-52.00; Shelly 52.00 Down. Fat Bulls - steady to \$1.00 lower. Good 69.00-72.25; Medium 65.00-68.00. Veal Calves - \$2.00 lower. Choice 104.00-108.50; Good 95.00-103.00; Medium 85.00-94.00; Farm Hfrs. to \$197.50; Farm Bulls \$115.00; Light & Weak \$80.00 Down. Lambs - Choice 63.00-65.00; Good 57.00-62.00; Medium 56.00 Down.
STOCKER: Steers 300-550 lbs. mostly steady prices. Choice to 87.00; Good 82.00-86.00; Medium 75.00-81.00;

Culls 74.00 Down. Steers 600-850 lbs. Choice 80.00-85.00; Good 75.00-79.00; Medium 74.00 Down. Heifers - (all weights) Choice 83.00-88.00; Good 75.00-82.00; medium 74.00 Down. Bulls - Choice 80.00-84.00; Good 74.00-79.00; Medium 73.00 Down. Dairy Cows to 575.00. Springing Hfrs. to 750.00. Pigs, Hd. - good run, steady prices 20-30 lbs. 16.00-29.00; 40-60 lbs. 30.00-41.00. Shoats by lb. to 40.00. Slaughter Hogs - 200-230 lbs. 41.00-41.85; 240-260 lbs. 40.50-41.60; 180-195 lbs 40.00-41.00. Sows - 300-600 lbs \$27.00-33.25.

Baltimore USDA

July 16, 1979
CATTLE 300: Slaughter steers and few heifers about 2.00 lower. Cows 5.00 lower. Bulls 4.00-7.00 lower. Supply 25% slaughter steers and heifers, 60% cows, balance few feeders and bulls.
SLAUGHTER STEERS: Choice 2-4 1100-1200 lbs. 65.25-67.10; Good & Choice 2-4 1015-1315 lbs. 64.25-65.25; Good 1050-1350 lbs. 61.00-64.10.
SLAUGHTER HEIFERS: Individual Choice 3 1055 lbs. 65.00. Good 835-1100 lbs. 59.50-62.25; pkg. with end Choice 62.75.
COWS: Utility 2-3 48.00-53.50; few 54.00-54.75. Cutter 44.00-50.00.
BULLS: YG 1-2 1045-1830 lbs. 59.75-67.25; individual 1 1435 lbs. 69.00.
FEEDER CATTLE: Choice steers 830-985 lbs. 67.25-69.50; Good & Choice 800-1075 lbs. 62.50-65.85; Choice steer bull calves 295-495 lbs. 85.00-93.00; several Choice heifers 350-480 lbs. 70.00-73.00.
HOGS 800: Barrows & Gilts 50 cents lower. US 1-2 200-240 lbs. 41.50-41.75; 100 head 42.00; US 2-3 230-260 lbs. 40.50-41.50.
SOWS: 1.00 lower. US 1-3 300-600 lbs. 29.00-30.00.
VEAL AND CALF AUCTION: 50 Choice 155-215

lbs. vealers 102.00-112.00, few Good & Choice 135-235 lbs. 94.00-100.00; 70-110 lbs. 70.00-83.50; calves returned to farm 70.00-84.00; individual 90.00; Choice calves 260-350 lbs. 92.00-94.00; few Good 75.00-82.50.
SHEEP AUCTION 75: Lot Good & Choice slaughter lambs 86 lbs. 54.00; Utility & Good ewes 21.50-28.50; Choice feeder lambs 46-65 lbs. 47.00-52.25; pkgs. 30 lbs. 79.00

G&M Auction

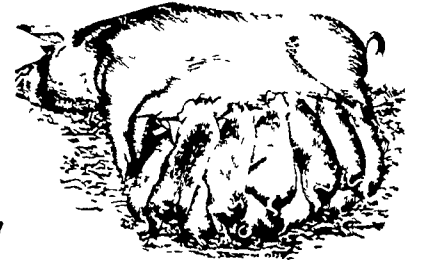
Duncansville, Pa.
July 16, 1979
Market reported Cattle, lower, Hogs, steady.
Dairy Cows: 925.00-2080.00.
STEERS: High Choice and Prime 66.00-68.20; Good to Choice 62.00-66.00; Standard to Good 58.00-62.00.
HEIFERS: High Choice and Prime 62.00-64.60; Good to Choice 58.00-62.00;

Standard 54.00-58.00.
FEEDERSTEERS: Good to Choice 300 to 500 lbs. 85.00-95.00; 500 to 700 lbs. 65.00-85.00.
BULLS: 1200 to 1450 lbs. 65.00-68.50; 900 to 1200 lbs. 62.00-65.00.
COWS: High Choice to Prime 50.00 to 53.25, individual 55.75; Good 48.00-50.00; Utility 46.00-48.00; Cutters 44.00-46.00; Canners Down to 42.00.
CALVES: High Choice 110.00-118.00; Good to Choice 90.00-110.00; Standard to Good 70.00-90.00.
Farm Calves: Hol. Bulls, 90 to 120 lbs. 95.00-122.50. Farm Calves. Hol. Heifers, 90 to 140 lbs. 140.00-207.50.
HOGS: 200 to 240 lbs. 42.00-43.90; 170 to 290 lbs. 39.00-42.00.
SOWS. 28.00-37.50.
BOARS: 25.00-30.00.
Feeder Pigs: 15 to 30 lbs. 15.00-25.00.
Feeder Pigs. 30 to 50 lbs. 25.00-37.00

NEW HOLLAND SALES STABLES, Inc.

12 Miles East of Lancaster on Route 23, New Holland, Penna.

WEEKLY FEEDER PIG SALE EVERY WEDNESDAY



Sale to Start at 1 P.M.

We Will Receive Your Pigs Anytime From 7 A.M. Wed. Morning

State Graded Until 12 Noon.

All pigs inspected by State Approved Veterinarian. State tags available at our office for you to tag pigs at home to save 25 cents tagging charge. Tags delivered if you call 717-354-4341 our office in advance.

Calf Sale To Be Held Every Thursday At 4:30 P.M.

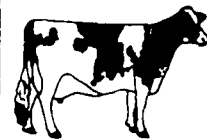
NORMAN KOLB ABE DIFFENBACH
717-397-5538 717-393-4464

OPEN HERDBOOK

ATTENTION GRADE DAIRYMEN

The Red & White Dairy Cattle Association accepts grade Red & Whites, Black & Whites and Colored cattle in our grade-up program. This is a complete program including permanent identification, classification and breed promotion. Over 700 members and 17,500 head registered.

Free information on request - Write Or Call Today



"BRIGHTEN YOUR FUTURE"

Red & White Dairy Cattle Association

Box 63L, Crystal Spring, PA 15536
Phone 814-735-4221



2-7FC

SPECIAL NOTICE

VINTAGE SALE STABLES, INC.

12 miles east of Lancaster at Paradise, PA.

Proudly Announces

A BUTCHER HOG AUCTION Every Monday AT 1:00 P.M.

This will be in addition to our regular Wednesday and Saturday Butcher Hog Auctions.

No waiting to unload.

Will receive hogs anytime Monday morning.

For More Information Call
L. Robert Frame, Manager

717-442-4181

768-8204

FARMS FOR SALE

Kent County, Maryland
Low taxes - Write
COOPER-BARROLL REALTY, INC.
Galena, MD 21635
Or Call "Jim Davis"
301-648-5593