

Milton Shapp joins Jim McHale and Jane Alexander at Agrispon

DILLSBURG - Former Governor of Pennsylvania, Milton Shapp, has become one of the principal owners and a director of the Dillsburg firm which is marketing an agricultural product in Pennsylvania and other Eastern states. Jane Alexander, the President of J & J Agri-Products and Services, Inc. and Deputy Secretary of Agriculture

under Shapp, made the announcement today. According to Ms. Alexander, who is also a practicing attorney in Dillsburg, "Governor Shapp joins me and James McHale, who as Secretary of Agriculture was my boss, in introducing to the farmers of Pennsylvania a product called Agrispon soil inoculant which

dramatically cuts the cost of farming while producing yields comparable to the conventional fertilization methods while rebuilding our precious but thinly-worn soil in the process".

"There are several aspects of Agrispon technology that had excited my imagination," Milton Shapp said. "Agrispon can make a significant contribution to the nation's energy budget by reducing the farmer's reliance on

commercial nitrogen which is a heavy consumer of scarce and costly energy. Some 400,000 cubic feet of natural gas are required to produce one ton of anhydrous ammonia. Of the large commercial energy input used to produce a crop of corn in the United States, about one-third is required to manufacture, distribute and apply nitrogen fertilizer. Then, crops generally utilize only about 50 per cent of the chemical nitrogen, the remainder of which is dissipated in the atmosphere or runs off to pollute our waters. (Science, Volumes #182, 188)

The scientific foundation for claims about Agrispon is stressed by Jane Alexander. She reported that the manufacturer, SnCorp, Inc. of Dallas, Texas has placed ongoing research plans with

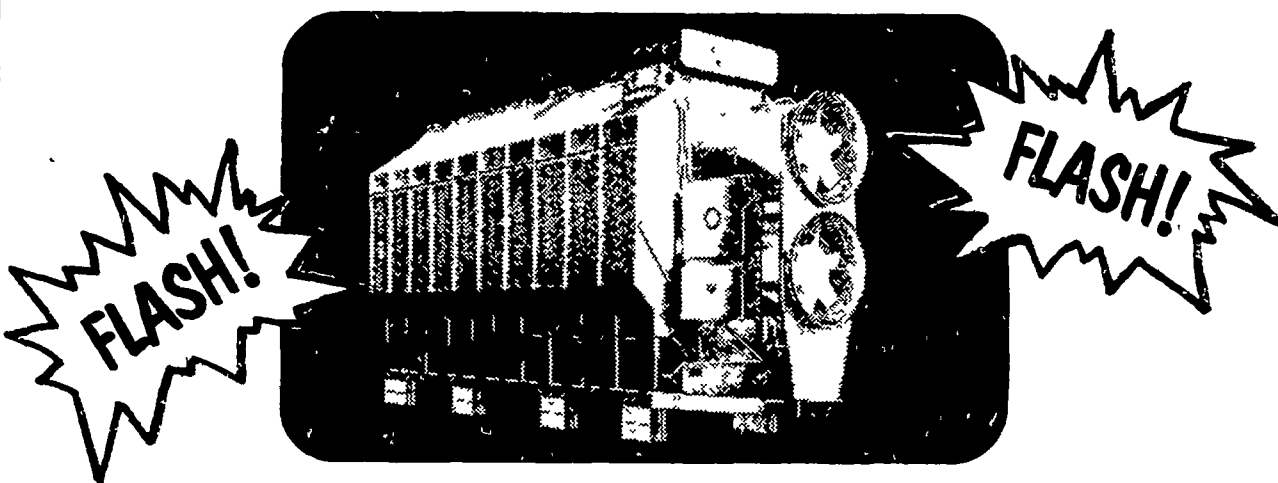
scientific experts at North Texas State and Virginia Commonwealth Universities to study the effects of the product on crops, soils and soil life. Controlled, replicated field trials have also been conducted by a number of independent laboratories and testing organizations including state and corporate experimental stations. Penn State University is one of these. The most recent scientific

work on the product has demonstrated Agrispon's capability to convert atmospheric nitrogen, which plants cannot use, to nitrate nitrogen, which plants prefer. Technical information on the product, including copies of the scientific reports, may be obtained by contacting J & J Agri-Products and Services, Inc., 148 South Baltimore Street, Dillsburg, Pennsylvania 17019.

WHITE WASHING
with Lime, The Natural Disinfectant
Also Offering
High Pressure Air Cleaning
Serving Eastern Pa. & New Jersey
ROBERT WENNER
Box 224, Point Pleasant, PA 18950
215-297-5203

BARN PAINTING
Call Us Now
For Free
Estimates
PHARES S. HURST
RD 1, Box 420
Narvon, Pa. 17555
215-445-6186

JUST RECEIVED
NEW FARM FANS GRAIN DRYERS
...Model AB-500A Staged Automatic



CONTACT US FOR YOUR DRYER NEEDS

USED TRACTORS

Oliver 1800 Diesel Tractor \$4,850 00
Kubota w/Loader Model L225, A-1 Cond 4,375 00
JD 620 Tractor, w/p s 3 pt hitch, real sharp 3,450 00

USED HARVESTER SPECIALS

NH 880 2-row narrow row head \$3,650 00
NH 717 Single Row Head,
9 Knife Cutter Bar 1,795 00
NH 717 w/1 row head 2,195 00
NH 717 1,175 00
Fox 1000 RPM PTO w/2-row corn hd &
Pk up attach 1,495 00
John Deere #12 w/single Row Head 150 00

USED BALER SPECIALS

JD 24T Baier w/#30 hyd Bale ejector \$2,550 00
New Holland 67 775 00
John Deere 14T 750 00
John Deere 14T w/ejector 450 00
John Deere 24T w/ejector 750 00

USED GRAIN DRILLS

Co op 15x7 Fert Grain Drill w/grass seed attach \$750 00
John Deere 15x7 FBB Drill 550 00

USED HAYBINES

John Deere 1209 \$3,250 00
NH 469 2,550 00
New Holland 479, as is 2,150 00
New Holland 479 3,250 00
Hesston 320 9' 1,850 00

USED PLANTER SPECIALS

Tag 11650 John Deere 1250 - \$2,350 00
6 Row Plateless 775 00
1229 Ford 4 Row

USED TILLAGE SPECIALS

MF 620 12' Disc Harrow \$2,950 00
Ford 4-16" Plow 950 00
John Deere KBA 32x18 Wheel Carrier Disc 875 00
John Deere KBA 28-18 Disk 850 00

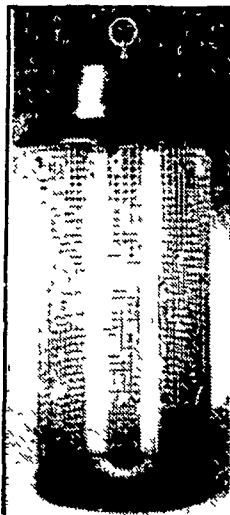
USED COMBINE SPECIALS

Cockshutt 427 w/Power Steering & 10' Platform 1,450 00
AC Model E w/10' platform, pickup reel,
2 row corn head, real clean 5,750 00
John Deere 55 Corn Soybean Special 12' head 9,700 00
John Deere 55 Combine w/cab and 12' Platform 7,500 00

MISCELLANEOUS

John Deere #181 row Corn Picker \$950 00
New Set 18 4x30 Snap on Duals w/New
Goodyear 6 Ply Tires 1,050 00

**HAPPINESS
IS A BARN.
WITHOUT FLIES**



Introducing the new AGRICOMMERCIAL FLY CONTROL SYSTEM B-40 to make your livestock happy. Delivering 40 watts of Ultra-Violet attraction for just pennies a day. Area of coverage is 600 to 1200 square feet. (Indoors depending on application.)

\$125.00

JD 7825 High pressure lever grease gun, delivers all pressure lubricants in any weather, 3-way reloading, quick, clean and convenient reloading with standard grease cartridge with filler pump or by suction
Reg Price - \$8.50

SALE \$6.50

Sale Good Thru July 31
While Supply Lasts



Evergreen Tractor Co. Inc.

30 EVERGREEN RD., LEBANON, PA 17042,
PHONE (717) 272-4641

AUTHORIZED
SPERRY-NEW HOLLAND
PARTS and SERVICE



Old Guard

Mutual Insurance Company

"Friend of Farmers since 1896."

Ask about our FARMOWNER'S policy. It is designed to give you the very broadest coverage at the most reasonable cost. We believe it is the finest policy you can buy. See our agent in your area

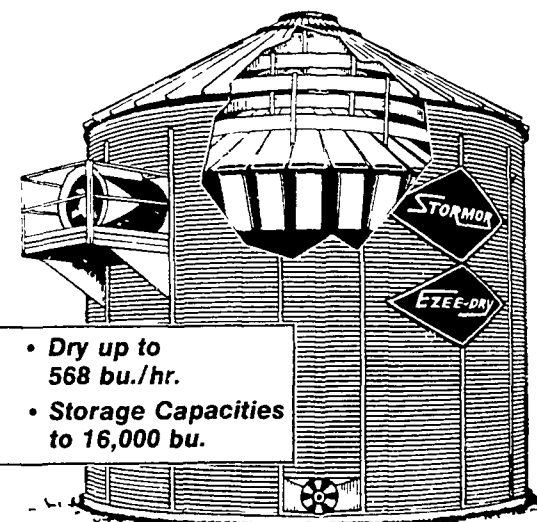
JOSEPH A. RIGG,
Box 154, Elverson, Pa

PAUL I. SHEAFFER AGENCY,
Intercourse, Pa

SHENK INSURANCE AGENCY,
R D #2, Grantville, Pa

WILSON COMPANY,
Lawrenceville, Pa.

**Stormor
EZEE-DRY**
Dries up to keep
drying costs down



- Dry up to 568 bu./hr.
- Storage Capacities to 16,000 bu.

No other grain drying system can match Stormor's patented overhead drying floor for efficiency. It uses all available heat to dry your grain. And that keeps drying costs down.

It's easy to save time, energy, and money with Stormor. See us today and we'll give you all the facts!

Loucks

GRAIN EQUIPMENT, INC.
RD 12,
York, PA 17406

(717) 755-2868

STORMOR