

Livestock market and auction news

Martinsburg Auction

Martinsburg, Pa.
July 9, 1979

CATTLE 186. Compared with the market last week Choice slaughter steers 65.50-72.00, one at 74.00, Good 63.00-65.00, Standard 61.50-65.00, Utility 58.00-62.00 Choice slaughter heifers 64.00-68.00, Good 60.00-65.00, Standard 58.50-63.50, Utility 55.00-58.50. Utility and Commercial slaughter cows

56.50-60.00, one at 64.00, Cutters 53.50-58.50, Canner and Low Cutters 50.00-55.00, Shells down to 45.00. Choice slaughter bullocks 68.00-74.00, Good 66.00-71.00, Standard 63.50-67.00, Utility 59.00-63.00. Yield Grade No. 1, 1600-2000 lbs. slaughter bulls 68.00-74.00, #2, 900-1600 lbs 64.00-68.00. Medium and Good 300-500 lbs. feeder steers 71.00-78.00.

CALVES 307. Choice vealers 104.00-120.00, Good 85.00-100.00, 70-90 lbs 70.00-

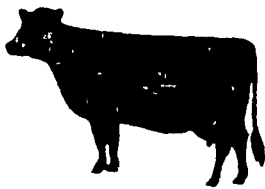
90.00. Farm Calves: Holstein bulls 90-120 lbs. 105.00-120.00, 70-90 lbs. 80.00-110.00; Holstein Heifers 80-130 lbs. 110.00-210.00.

HOGS 287. US No. 1-2 200-240 lbs barrows and gilts 41.50-43.00, No. 1-3 195-240 lbs 39.00-42.00, No 2-3 250-270 lbs. 38.00-40.00, No. 1-3 130-180 lbs. 35.00-40.00. US No 1-3 300-500 lbs. sows 31.00-35.00, No. 2-3 300-600 lbs 30.00-33.00. Boars 24.00-28.00

FEEDER PIGS 66. US No. 1-3 20-35 lbs. feeder pigs 20.00-32.00 per head, few No. 1-3 35-50 lbs. 25.00-45.00 per head

SHEEP 4 Few Choice spring slaughter lambs 60.00-62.00, few Good 52.00-58.00

Market courtesy of PDA



Middleburg Auction

Middleburg, Pa.
July 10, 1979

CATTLE 283. Compared with last Tuesday's market; Choice slaughter steers 64.00-69.75, one at 71.60, Good 60.00-68.75, Standard 58.00-60.00. Utility 55.00-58.00. Choice slaughter heifers 62.00-67.00, Good 58.00-62.00, Standard 55.00-58.00, Utility 52.00-55.00 Utility & Commercial slaughter cows 55.00-59.00, one at 60.75, Cutters 52.00-57.85, Canner & Low Cutter 50.00-52.00, Shells down to 45.00 Choice slaughter bullocks 70.00-72.85, Good 68.00-70.00 Yield Grade #1 1200-1950 lbs. slaughter bulls 65.00-72.60; yield grade #2 800-1200 lbs. 60.00-65.00 Feeder cattle, Good 300-675 lbs feeder steers 65.00-88.00.

CALVES 180 Prime vealers 110.00-115.00, Choice 100.00-110.00, Good 90.00-100.00, Standard & Good 90-100 lbs 80.00-95.00, 70-90 lbs. 70.00-85.00 Farm calves, holstein bulls 95-115 lbs. 105.00-135.00; holstein heifers 80-150 lbs 110.00-205.00

HOGS 531 (Monday, July 9, 1979). US No. 1-2 200-235 lbs. barrows & gilts 42.75-43.50, No 1-3 190-250 lbs. 41.50-42.60, No. 2-3 200-270 lbs. 40.20-41.50. US No. 1-3 300-685 lbs. sows 27.00-34.75. Boars 200-780 lbs. 27.50-32.00

FEEDER PIGS 416. US No 1-3 10-20 lbs. feeder pigs

12.00-22.00 per head, No. 1-3 20-40 lbs. 20.00-35.00, No. 1-3 40-55 lbs. 35.00-42.00 per head.

SHEEP 15. Not enough of any one grade to establish a market.

Market courtesy of PDA.

Sechrist Auction

Stewartstown, Pa.
July 9, 1979

CATTLE 49. Steers - High Choice and Prime 64.85-67.00; Good Choice 62.00-65.00; Holsteins Good 58.00-63.85; Standard to Good 56.00-58.00. Heifers - Good to Choice 58.00-62.00; Good 55.00-58.00; Holsteins Good 55.00-58.75; Standard Good 53.00-55.00 Feeder Steers - Good and Choice 65.00-85.00; Standard Good 55.00-65.00. Bulls - Good and Choice Commercial 68.00-70.00; Standard to Good 62.00-68.00; Utility to Standard 57.50-62.00. Cows - High Yearling Commercial 58.00-60.75; Cutters 56.00-58.00; Canners Low Cutters 54.00-56.00; Shells 50.00-53.85.

CALVES 128. Calves - Choice and Prime 110.00-121.00; Good and Choice 100.00-110.00; Standard and Good 95.00-100.00; Bulls Good 100-120 lbs. 100.00-115.00; Hfrs. Good 90-110 lbs. 100.00-150.

HOGS 360. Hogs - U.S. No. 1 and 2, 190-220 lbs. 43.00-44.25; U.S. No. 1 and 3, 190-230 lbs. 42.75-43.00; U.S. No. 1 and 3, 180-250 lbs. 42.00-42.75. Sows - 250-375 lbs. 32.00-35.50; 400-500 lbs. 28.50-31.50. Boars - 300-500 lbs. 27.00-31.85.

SHEEP 20. Lambs - Good to Choice 65.00-73.00; Medium and Good 55.00-65.00. Ewes - 25.00-35.00.

Private Treaty Fat Hogs, Select No. 1 and 2, 190-21 lbs. 42.00-43.50.

Private Treaty Fat Hogs, No. 1 and 2, 190-220 lbs. 41.75-42.00.

Private Treaty Fat Hogs, No. 1 and 3, 190-220 lbs. 41.00-41.50.

Four States Livestock

Four States Livestock Sales, Inc.
Wed., July 4, 1979

SLAUGHTER: Fed Steers & Heifers none offered, but strong demand would have been higher. Cows good run, very active, \$2.50 higher. High Yield 59.50-62.50; Average 56.00-59.00; Big Middle 52.00-55.00; Shelly 54.00 Down. Fat Bulls \$2.00 to \$3.00 higher. Good 71.00-74.50; Medium 66.00-70.00. Veal Calves \$3.00 to \$6.00 higher. Choice 107.00-110.00; Good 100.00-106.00; Medium 85.00-99.00; Farm Hfrs. to 185.00, Farm Bulls to 115.00; Light & Weak 80.00 Down. Sows 400-600 lbs. 31.50-34.50.

STOCKER: Steers 300-550 lbs. \$4.00 higher. Choice 92.00-96.50; Good 87.00-91.00; Medium 81.00-86.00; Culls 80.00 Down. Steers 600-850 lbs Choice 83.00-88.00; Good 76.00-82.00; Medium 75.00 Down. Heifers (all weights) light wts. to \$96.00. Choice 82.00-88.00; Good 76.00-81.00; Medium 75.00 Down. Bulls Choice 84.00-87.00; Good 79.00-83.00; Medium 78.00 Down. Dairy Cows to 907.00. Springing Hfrs. to 775.00. Pigs, Hd. \$3.00 higher. 20-30 lbs. 15.00-29.00; 40-60 lbs. 30.00-37.00. Shoats By Lb. to 67.00. Slaughter Hogs \$2.00 under last week. 200-230 lbs. 41.00-42.00; 240-250 lbs. 40.00-41.25; 260-285 lbs. 37.00-39.00.

L & M FUR & WOOLEN ENTERPRISE



Quality Electrified Sheepskins & Furs
Tannery Direct Dist Wholesale & Retail
Check Our Quality Price & Services!
Mail & Phone Orders Accepted

- Woolen Hosp Pads Natural & All Colors
- Pa Largest Selection of Woolen Products
- Sheepskin Coats at Reasonable Prices
- See Us At Meadowbrook Market in Leola

Dealers Wanted

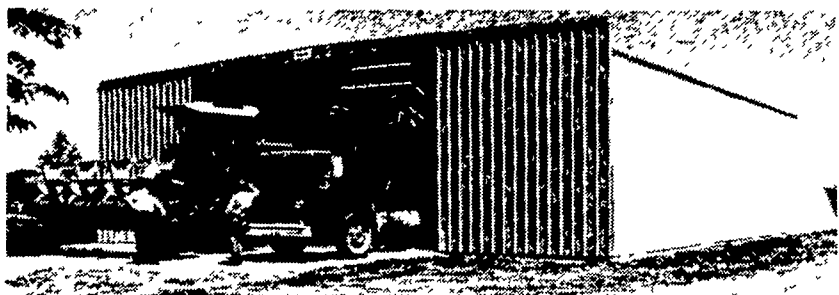
117 W Summit St Mohnton PA
215 777 2465

Hours Mon Fri 9 8 30 Sat 9 5
Wed 9 4 30 Sat 9 5

BUTLER CLEAR SPAN BUILDING

1-PER COUNTY Display Buildings Only

Buy a building at list price and get twice the length for only 50% more



FARMSTED I

30'x50'x11'

LESS THAN \$4000

FARMSTED I GALV ROOF & WALLS 16'x10' Double Slide Door

40'x50'x14'

LESS THAN \$5000

FARMSTED I GALV ROOF & WALLS 20'x13' Double Slide Door

50'x50'x16'

LESS THAN \$7000

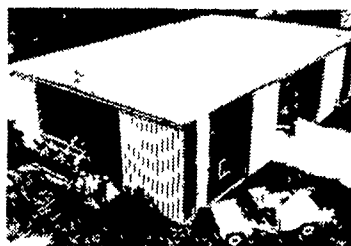
FARMSTED I GALV ROOF & WALLS 24'x16'7" Double Slide Door

60'x50'x16'

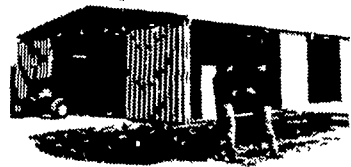
LESS THAN \$8500

FARMSTED I GALV ROOF & WALLS 20'x16'7" Double Slide Door

ALSO



FARMSTED II AND



AG-MASTER 2:12

ALL BUILDINGS F.O.B. ANNVILLE, PA.
(Buildings not equipped as shown)

VARIOUS SIZES HEIGHT & WIDTH AVAILABLE

.. Special Grain Storage Buildings Available

CALL YOUR BUTLER AGRI-BUILDER TODAY

Beatty & Nelson Contractor
C & M Sales Inc
A E Engel, Inc
Knoxville Construction
Katterlin Sales & Service
Greenside Contracting
Orville Mack
Leroy E. Myers Inc
Al Maurer
W R Moody Contractor

717-677-9310
717-253-1612
609-983-4404
814-326-4188
814-438-3180
301-472-8161
215-759-1331
301-582-1552
717-864-3135
412-872-6804

O A Newton & Son Co
Royer's Farm Service
D E Smith, Inc
Glenn M. Stahlin
Tap Enterprises Inc
Temco Parts Co Inc
Tri-County Agr-Systems
Tri-State Marine Dist Inc
Walter J Construction

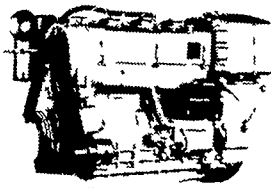
302-337-8211
717-837-3201
717-436-2151
301-777-0582
215-929-2553
301-778-4454
609-467-3174
301-867-1447
717-392-8280



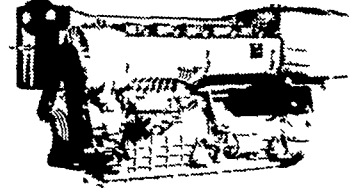
1050 SU SERIES



2800 R.P.M.
66 SAE HP
60 DIN HP



2800 R.P.M.
88 SAE HP
80 DIN HP



2800 R.P.M.
132 SAE HP
120 DIN HP

THE "RIGHT FROM THE START" DIESEL ENGINE LINE FOR FAULTLESS PERFORMANCE

FOR MORE INFORMATION ON HIGHER H P — CALL US —

QUEEN ROAD REFRIGERATION

Box 67, Intercourse, PA 17534

Ph: John D. Weaver - 717-768-9006 or 768-7111 or Answering Service - 717-354-4374

24 HOUR SERVICE



SPECIAL BALDWIN FILTER SALE
20% OFF CASE LOTS
10% OFF 1/2 CASE LOTS

Orders must be in by July 20
Phone or Mail Orders
Shipped UPS