

## Livestock market and auction news

### Omaha Cattle

Thurs., July 5, 1979

Closing prices on slaughter steers were weak to .50 lower, and heifers closed .50-1.00 off. Instances 1.25-1.50 lower. Cows were steady to .50 lower and bulls firm.

Three day receipts 9,900 compared 9,600 for last week and 7,400 a year ago.

Prices on slaughter steers and heifers were forced downward on Monday in reflection of a liberal supply, an approaching holiday, and lower carcass prices early. Demand was rather broad, however, despite the mid-week holiday and a moderate Thursday run cleared quickly. Transportation difficulties were eased considerably from the previous week and most slaughterers resumed normal operations. The overall finish of the steer and heifer supply was rather attractive with a liberal percentage choice, although many consignments were mixed 3 and 4 yield grade. Slaughter steers made up approximately 54 pct. and heifers 29 pct. Cows comprised 14 pct. and feeders scarce.

**STEERS:** Part load Choice and Prime 3 1391 lbs. 69.00, nine loads same grade 3-4 1175-1225 lbs. 68.75. Choice 2-4 1050-1337 lbs. closed 67.50-68.50, some 1200-1300 lbs. with large percentage 4 66.50-67.25 during week. Mixed Good and Choice 2-3 1000-1250 lbs.

66.50-67.75. Good 2-3 63.00-65.50, holsteins 60.00-62.00, some with end Choice 63.00.

Average of LS-214 detailed quotations for Choice 900-1100 lbs. steers this week 68.00, Choice 1100-1300 lbs. Average weight steers for two days 1191 lbs. as compared 1177 lbs. the previous week. Average weight heifers for two days 1003 lbs. as compared 1005 lbs. the previous week.

**HEIFERS:** Few loads and part loads Choice and Prime 3-4 996-1100 lbs. 67.00-67.50. Choice 2-4 900-1100 lbs. 65.50-67.00, some with large share 4 65.00-65.25. Mixed Good and Choice 2-3 64.50-66.00. Good 2-3 61.50-64.00.

**COWS:** Utility and Commercial 2-4 50.00-53.00 some high-dressing 53.50-54.50. Cutter 47.50-51.00. Canner and low-Cutter 45.00-48.00.

**BULLS:** 1-2 1400-2000 lbs. 60.00-68.50, several high-dressing 69.00-70.00.

### Dewart Auction

Dewart, Pa.  
July 2, 1979

**CATTLE** 170. Compared with last Monday's market, slaughter steers grading Choice \$2.50 to \$4 lower. Slaughter cows mostly \$1.50 to \$2 lower. Choice No. 2-4 1000-1400 lbs. slaughter steers 65.50-68.00, couple to 69.00, Good 63.50-65.85, few Standard 62.25-64.50. Few Prime slaughter heifers 65.00-68.00, Good & Choice

60.00-64.00. Utility & Commercial slaughter cows 54.50-58.00, couple to 60.25, Cutters 54.00-57.50, Canner & Low 50.00-54.50, Shells down to 45.00 Few Good slaughter bullocks 69.75-72.35, few Standard 66.75-69.00. Few Yield Grade #1 1150-1925 lbs. slaughter bulls 67.25-72.00. Few Medium & Good 375-550 lbs. feeder steers 60.00-69.00; few Medium 425-500 lbs. holsteins 89.00-93.50.

**CALVES** 138. Vealers mostly \$2 to \$5 higher. Few Prime vealers 114.00-120.00, Choice 102.00-117.00, few Good 98.00-110.00, Standard & Good 80-100 lbs. 85.00-95.00. Farm calves, holstein bulls 90-125 lbs. 90.00-140.00; holstein heifers 85-115 lbs. 95.00-165.00.

**HOGS** 568. Barrows & gilts \$3 to \$4. US No. 1-2 200-230 lbs. barrows & gilts 43.00-43.60, No. 1-3 195-240 lbs. 41.50-43.00, No. 2-3 220-270 lbs. 37.25-40.75, No. 1-3 160-185 lbs. 37.75-42.00. US No. 1-3 300-550 lbs. sows 31.00-35.50. Boars 28.00-33.50.

**FEEDER PIGS** 326. US No. 1-3 20-35 lbs. feeder pigs 17.00-26.50 per head, No. 1-3 40-55 lbs. 25.00-31.50, lot No. 1-3 70 lbs. 36.00, Utility 20-35 lbs. 15.50-20.50 per head.

**SHEEP** 18. Choice 85-100 lbs. spring slaughter lambs 65.00-70.00, few Good 85-100 lbs. 54.00-59.00.

Market courtesy of PDA.

### Valley Livestock

Valley Stockyards  
Athens, Pa.

Monday, July 2

Reported receipts of 342 calves, 99 cows, 119 hogs, 14 heifers, 3 sheep, 37 lambs, 13 bulls, and 3 steers. Cattle

market steady and calf market easier than last week.

Holstein heifer calves to 115.00; veals 85.00-113.00; bobs, 90 to 110 lbs. 82.00-100.00; bobs, 80 lbs. and down 50.00-80.00; grassers and feeders 67.00-108.00; lambs, 60.00-80.00; sheep, 22.00-25.00; hogs, 200 to 250

lbs. 36.00-46.00; sows 30.00-40.00; boars 24.00-26.00; pigs, each 19.00-56.00; heifers 57.00-69.00; steers, good none; steers, common 62.50-66.50; bulls 56.00-69.00; cows, good 56.75-60.25; cows, medium 48.50-56.00; cows, poor or small 30.00-42.00; horses, none; ponies, none; goats 16.00-41.00.

# SUPER DOL

THE AMAZING "TIME RELEASE" BUFFER  
CONTAINING MAGNESIUM  
FOR RUMINANTS

CALL OR WRITE: **wmb** CORPORATION

960 E. GREEN ST., PASADENA, CA. 91106 • (213) 449-1667  
5360 MERLE HAY RD., DES MOINES, IA. 50323 • (515) 282-5415  
141 FIELDCREST AVE., EDISON, N.J. 08817 • (201) 387-2082

## CURIOUS RED?

SUBSCRIBE TO

"The Red Bloodlines"  
Monthly publication featuring Red sires, Red & White Breeders, Shows & Sales and much more.

12 Issues Only \$3.00

ORDER A

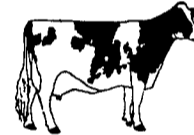
Sire Directory

Featuring 49 Red sires with pictures, proofs and pedigrees. Valuable guide in sire selection.

Cost \$1.00



"BRIGHTEN YOUR FUTURE"  
Red & White Dairy Cattle Association  
Box 63L, Crystal Spring, PA 15536  
Phone: 814-735-4221



2-9FP

# OPEN HOUSE

## VERNON BEILER

Rt. 23 & Turnpike Bridge  
Morgantown, PA

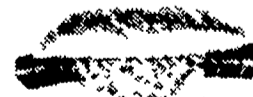
### TUESDAY, JULY 10, 1979

10:00 to 3:00 P.M. ★ RAIN OR SHINE

- ★ Remodeled Layer House
- ★ Expanded Poultry Capacity In Same Size House
- ★ New SLURRYSTORE® For Poultry Litter. Stores and Processes All Poultry Waste.

## REFRESHMENTS

HOT  
DOGS  
AND  
COKE



## PENN-JERSEY HARVESTORE® SYSTEMS, INC.

P.O. BOX 7 NEW HOLLAND, PA 17557

PHONE: 717-354-4051

