

Nuclear power needed to overcome energy mess

By KENDACE BORRY LANCASTER — "We've got to go ahead with nuclear," stressed Charles Robbins, former president of the Atomic Industrial Forum who spoke at the Pa. Poultry Conference last Thursday. And although he called the Three Mile Island incident

perhaps the "most momentous event of the year", he reminded his audience that in the "22 years commercial nuclear power plants have been operating more than one million people have been killed on American high-

ways, and many more millions have been injured". "Today 70 nuclear power plants are operating or are operable in the U.S. and 400 years of operation (using one reactor operating one year as 1) have produced not one death or even one person

maintained in commercial nuclear power plants." "We must not forget that every form of energy exacts a price, whether in hazards to health or money," Robbins continued. Coal, the resource that can be more easily expanded or increased is the most ex-

pensive in terms of lives lost or injuries caused, and in causing lung and breathing problems. Plants burning coal sometimes emit more radiation than would be permitted of plants fissioning atoms—because some coal has fairly high concentrates of uranium, he added.

The major goal of U.S. energy policy is to reduce the U.S.'s dependence on foreign energy sources. Coal and nuclear are the only major existing domestic energy sources which can provide large amounts of additional energy through the end of this century."

"Thirty thousand died in Pa. mines between 1870 and 1950" Robbins stated.

Oil and natural gas are not without their hazards, in production, transporting and in burning, he noted. And although hydro energy is often thought of as producing no damage, dams break, sometimes at a loss of life. And dams often result in good bottom land ideal for farming being taken out of production.

"Nuclear, unlike coal, does not produce carbon dioxide," he added. "Increasing the carbon dioxide levels in the earth's atmosphere might bring about curtailments in the use of carbon fuels by the turn of the century."

Solar energy requires space for sun absorbing equipment, and "space is getting increasingly expensive".

Talking about the entire energy picture, Robbins stressed how "confused and dismal it is. Not only is the shortage real—very real—but the circumstances surrounding that shortage are very disturbing. I have never known us to be in so many crises, some of which seem incapable of being solved."

"Every other potential energy source that I have heard of has some negative effects on the environment," Robbins said. "Nuclear power is a domestic energy

Looking at the U.S., Robbins said that confusion is "widespread".

"President Carter and Congress are at Loggerheads, on every significant issue. Congress can't even write or pass any legislation for the President's signature or veto."

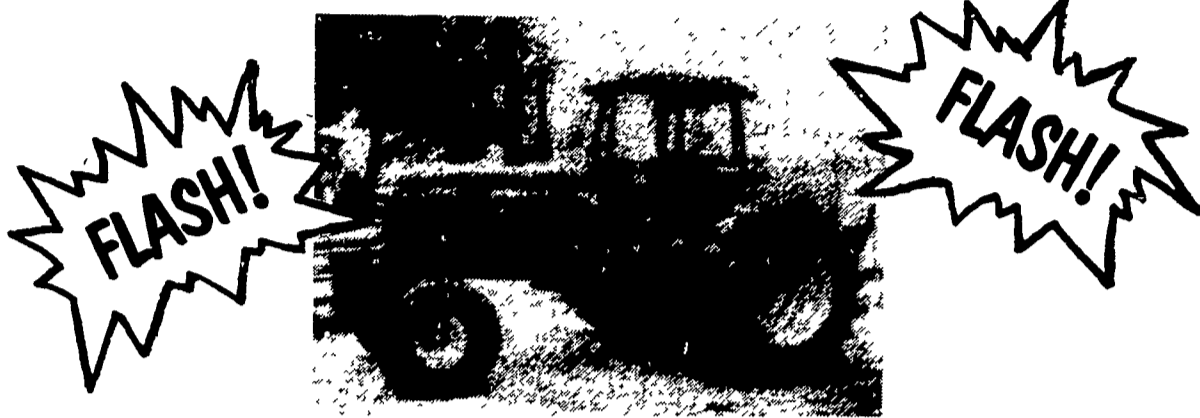
"Carter's rating has sunk to 29 per cent of public approval. That might be lower than for any previous president, unless for Pres. Lincoln at the darkest period of the Civil War. Carter not only doesn't have the approval of the American people, but that seems to be the attitude of so many people in other countries."

"For six years Congress, the White House, and the public have been learning something about energy. But learning is slow, the polls show that 77 per cent do not believe that an energy shortage exists, that it has been arranged by the oil companies.

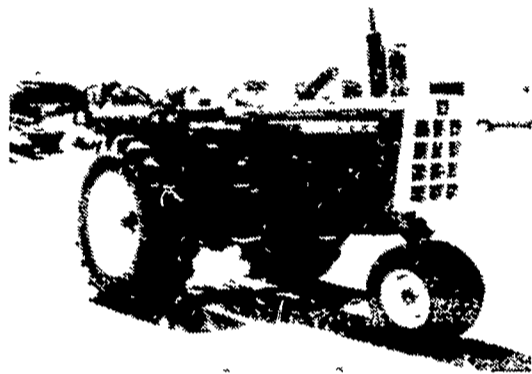
The international political and energy situation is no better, he added, telling of the uneasy Egypt-Israel peace agreement, the U.S.

(Turn to Page 36)

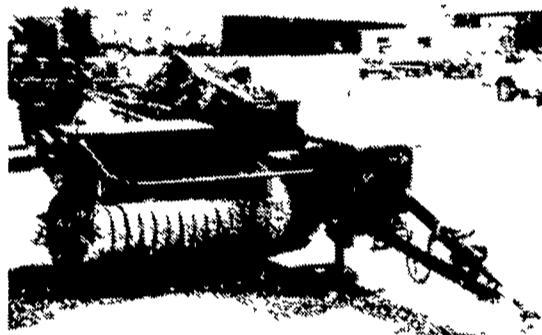
JUST RECEIVED



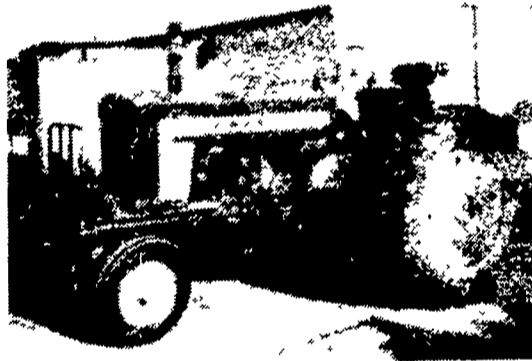
John Deere 4640 Tractor, Power Shift with Dual 20.8 x 38 rear wheels and quick coupler



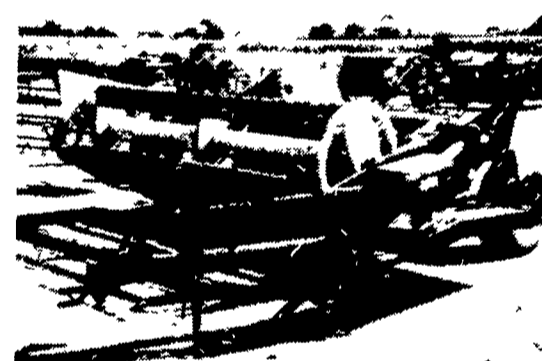
Oliver 1800 Diesel Tractor \$4,850.



John Deere 24T Baler w/thrower . . \$1,750.



John Deere 620 Tractor w/power steering, 3 point hitch, Real Sharp! \$3,450.



New Holland 479 Haybine. \$3,250.

USED TRACTORS

Kubota w/Loader Model L225, A 1 Cond \$4,375.00

USED HARVESTER SPECIALS

NH 880 2-row narrow row head \$3,650.00
 NH 717 Single Row Head, 9 Knife Cutter Bar 1,795.00
 NH 717 w/1-row head 2,195.00
 NH 717 1,175.00
 John Deere #12 w/single Row Head 150.00

USED BALER SPECIALS

New Holland 76 w/PTO Thrower \$1,450.00
 New Holland 67 775.00
 John Deere 24T w/thrower 1,400.00
 John Deere 14T 750.00
 John Deere 14T w/ejector 450.00

USED GRAIN DRILLS

Co-op 15x7 Fert Grain Drill w/grass seed attach \$750.00
 John Deere 15x7 FBB Drill 550.00

USED HAYBINES

John Deere 1209 \$3,250.00
 New Holland 479, as is 2,150.00

SPECIALS

1600 JD Pull Type Chisel Plow 8' w/new tires PRICE \$1,835.00 | 1700 JD Mulch Tiller 11' w/new tires PRICE \$4,395.00

USED PLANTER SPECIALS

Tag 11650 John Deere 1250 - 6 Row Plateless \$2,350.00
 1229 Ford 4 Row 775.00

USED TILLAGE SPECIALS

MF 620 12' Disc Harrow \$2,950.00
 Oliver Disc 9' 1,175.00
 Ford 4-16" Plow 950.00
 John Deere KBA 32x18 Wheel Carrier Disc 875.00
 John Deere KBA 28-18 Disk 850.00

USED COMBINE SPECIALS

Cockshutt 427 w/Power Steering & 10' Platform 1,450.00
 AC Model E w/10' platform, pickup reel, 2 row corn head, real clean 5,750.00
 John Deere 55 Corn Soybean Special 12' head 9,700.00
 John Deere 55 Combine w/cab and 12' Platform 7,500.00

MISCELLANEOUS

John Deere #18 1-row Corn Picker \$950.00
 New Set 18 4x30 Snap on Duals w/New Goodyear 6 Ply Tires 1,050.00

HOT WEATHER SPECIAL

John Deere 18A POWER WASHER
 List \$369.00 SALE PRICE \$325.00
 Offer Good July 2nd thru 13th

THERE ARE TWO WOOD STOVES IN THIS PICTURE

The one you see is an open stove, with all the beauty of the open fireplace. The one you don't see is an air tight stove that heats up to 7,000 cu ft for 8 hours when you close sealed glass front.

The Efel is designed to be used either free standing or vented into an existing fireplace. Either way you get two stoves in one.

SAVE UP TO 75% ON HEATING BILLS

WOOD HEAT

Rt 212 Pleasant Valley Quakertown Pa
 Open Mon & Fri 8-8 Tues & Thurs 8-5 Sat 9-5
 Closed Wed & Sun Phone (215) 346 7894

90 DAYS NO FINANCING CHG
 FINANCING UP TO 30 MONTHS

Old Guard
Mutual Insurance Company
 "Friend of Farmers since 1896."

Is your farm sufficiently insured? With our low rates and broad coverage you can't afford not to carry adequate amount of insurance to protect against today's inflated values. See our agent in your area.

H. EUGENE KELLER,
 109 Poplar St., Richland, Pa.
RESSLER INSURANCE AGENCY,
 Strasburg, Pa.
THE RHODE AGENCY, INC.,
 Main & Noble Sts., Kutztown, Pa.
JOHN P. HELD,
 403 Union St., Millersburg, Pa.



Evergreen Tractor Co. Inc.

30 EVERGREEN RD., LEBANON, PA 17042,
 PHONE (717) 272-4641

AUTHORIZED
 SPERRY-NEW HOLLAND
 PARTS and SERVICE