

# Third generation farmer raises Ayrshire cows

By JOAN LIESAU  
POTTSTOWN — "Cows have to work for us. If they're not milking, we can't

keep them," stated Harold R. Kulp of Pottstown. Kulp raises about 100 cows, milking 30 Ayrshires, 50

Holsteins and farming approximately 500 acres of land. Using a double four stall

herring bone parlor, Harold's wife Dawn and their son Ed were in the process of milking. They have model 200 milkers which "are able to tell when the cow is done milking because the light goes off," Ed explained.

The vacuum goes from 10 to 15, depending on the flow of milk. "You don't have to worry about the cows being over milked," Kulp said, "each cow sets her own pace. When the cow is done the vacuum changes." Kulp felt this system was better for udder health by not over milking the cow.

The Kulp's also spray on teat dip. This way the dirt from the teat cup doesn't travel from cow to cow.

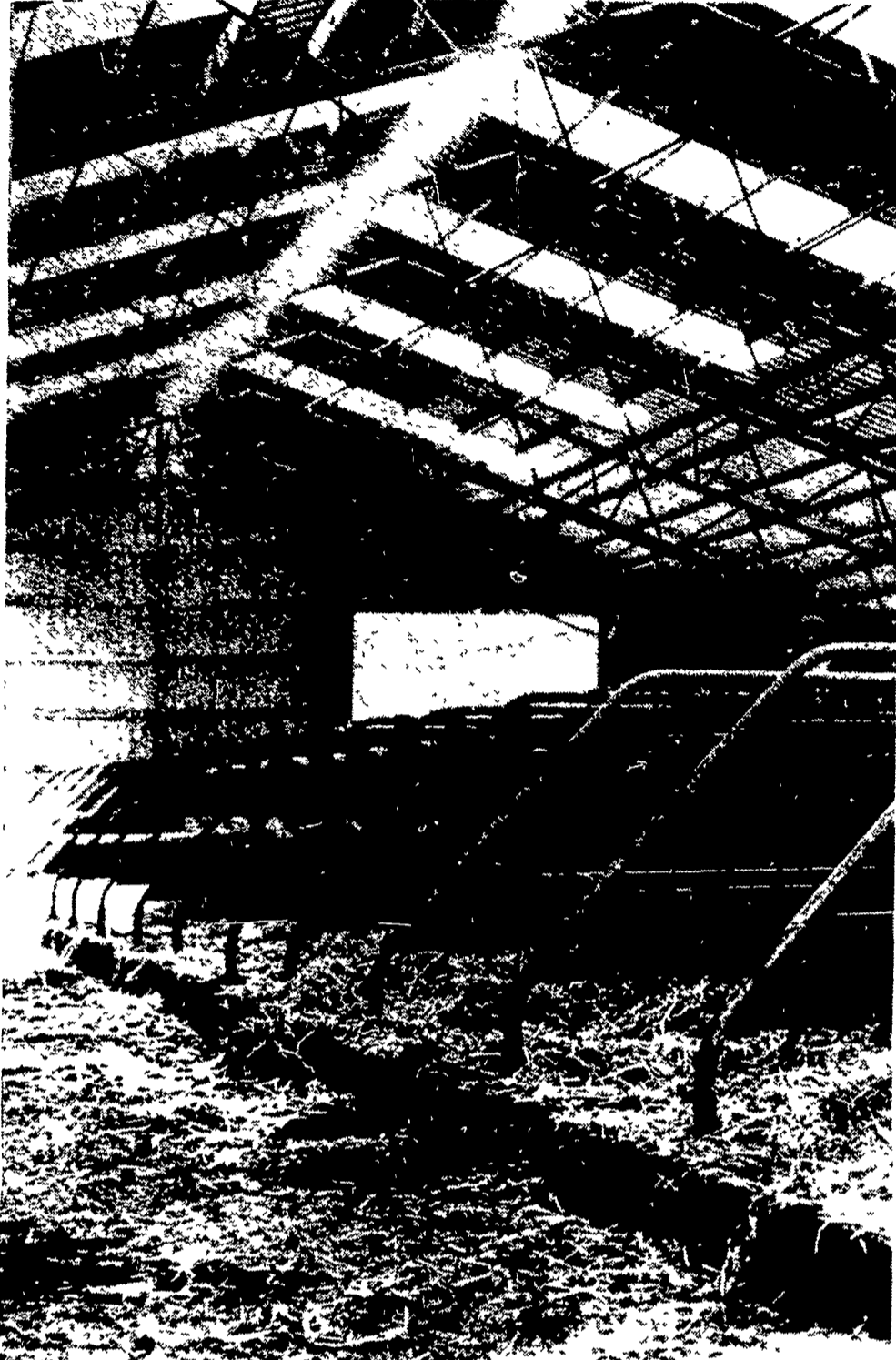
Kulp feeds hayledge and cornsilage when available. He grinds his own corn and mixes it with a 38 per cent protein supplement. Overall, the Summer feed plus hayledge runs between 16 and 18 per cent protein and in the Winter, the feed plus corn silage averages around 20 per cent protein. Kulp supplements the ration according to what the cows are milking. The grain feeding is done and controlled in the milking parlor. Second and third cutting hay is fed once each day. Kulp puts his first cutting in racks for the cows to eat free choice.

His herd averages 616 pounds of butterfat and 15,815 pounds of milk.

Looking at his records, the tests are fairly uniform, too.

Kulp was recently awarded the Constructive Breeders Award for the third time by the Ayrshire Breeder's Association. His Eureka Dairy herd maintained a mature equivalent production average of 14,729 pounds of milk and 577 pounds of butterfat. The Ayrshire herd's average classification score was .840 on 23 head of cattle. Only 29 Ayrshire breeders, nationwide, qualified for this prestigious award in 1978. Kulp's herd had to be classified for type on a regular schedule. The majority of registered Ayrshires in the herd also

(Turn to Page 22)



The Kulp's cold free stall barn double partitioned stalls. An opening is also visible down the center of the roof. Kulp says this makes for better ventilation.

## BROWNSTOWN AGRI LOAN CORP.

FARMERS ARE OUR ONLY CUSTOMERS —  
SO WE TREAT THEM WITH SPECIAL CARE!

- Exclusive Lending To Farmers
- Dependable Source Of Funds
- Personal Service On Farm Or In Office
- Confidential Service
- Terms To 7 Years
- Repayment Schedules To Meet Farm Income

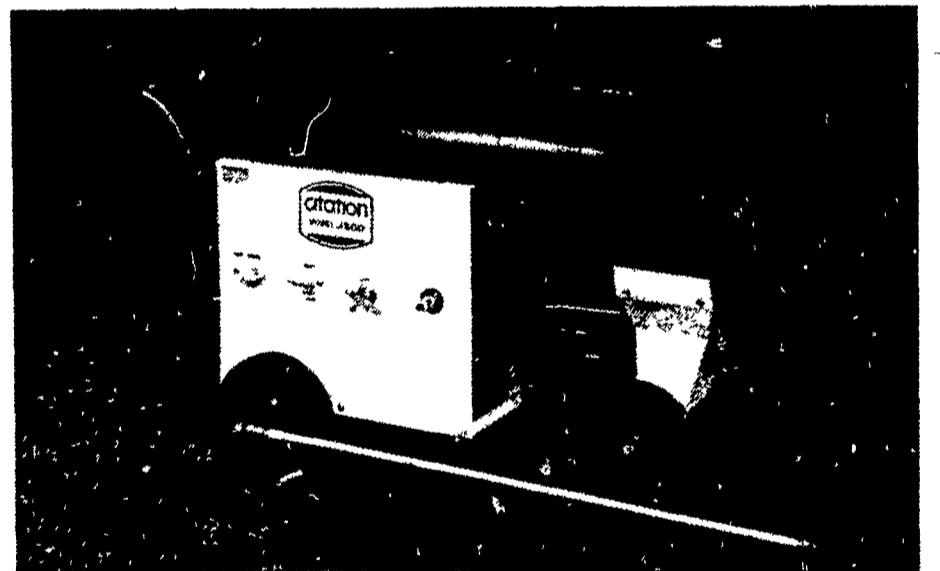
Serving  
Lancaster  
and  
Lebanon  
Counties.

BROWNSTOWN AGRI LOAN CORP.

Brownstown Nat'l. Bank Building  
Main & State Sts., Brownstown, Pa. 17508

Call or Visit:  
**BOB ZOOK**  
717-656-2951

## CITATION HOT HIGH PRESSURE WASHER



Citation engineers created the "Ultimate" high pressure hot water washers when they designed the Model 3000 and 3500 cleaning machines. The simple and efficient horizontal coil and firebox concept spells low cost in purchase and economy in operation for the consumer. The units incorporate a large chemical tank, 3-way selector valve and calibrated stainless steel metering valve. They discharge 240 GPH at 1000 PSI up to 160° F rise. Pressure and volume is developed, as recommended by the manufacturer, from a stainless steel Triplex CAT® pump. The 3000 and 3500 are available in oil-fired versions only.

Discharge rate . . . 240 GPH  
Discharge pressure . . . 1000 PSI  
Units of cleaning energy\* . . . 240,000  
Temperature . . . 160° F rise  
Coil . . . 168 Ft 7/8" O D  
Schedule 40  
Burner . . . 380,000 BTU,  
automatic, oil fired  
w/fuel filter & solenoid valve,  
UL approved  
Fuel tank (oil) . . . 8 gallons  
Fuel . . . Kerosene or No 1 fuel oil

Pump . . . CAT®, Tri-plex,  
stainless steel  
Motor . . . 3 HP electric, 220 volt,  
single phase  
Discharge hose . . . 3/8" x 40 ft, 9,000  
PSI burst rated  
Discharge gun . . . (Model 3000) straight  
through hand wand  
Discharge gun . . . (Model 3500) trigger type  
w/extension wand  
By-Pass . . . (Model 3500 only)  
Spraying Systems  
Nozzles . . . (3) #8 5, 0°, 15°, 40° stainless  
steel  
Portability . . . 4-2 75" x 10"  
rubber wheels  
Dimensions . . . L-60" H-36" W-28"  
Shipping weight . . . 600 lbs

\*Volume x Pressure



## GRUMELLI FARM SERVICE

RD 2, QUARRYVILLE, PA 17566  
PHONE: 717-786-7318



Diesel

### 1050 SU SERIES



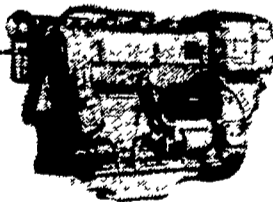
2800 R.P.M.  
22 SAE HP  
20 DIN HP



2800 R.P.M.  
44 SAE HP  
40 DIN HP



2800 R.P.M.  
66 SAE HP  
60 DIN HP



2800 R.P.M.  
88 SAE HP  
80 DIN HP



2800 R.P.M.  
132 SAE HP  
120 DIN HP

THE "RIGHT FROM THE START" DIESEL  
ENGINE LINE FOR FAULTLESS PERFORMANCE

FOR MORE INFORMATION  
ON HIGHER H.P.  
— CALL US —

### USED DIESELS

- (3) SR 2 Lister
- (3) DVA 1500 Slanzis
- ST 2 Lister
- Cylinder Deutz

## QUEEN ROAD REFRIGERATION

Box 67, Intercourse, PA 17534  
Phone: John D. Weaver - 717-768-9006 or 768-7111  
or Answering Service - 717-354-4374

