

# Livestock market and auction news

## Martinsburg Auction

Martinsburg, Pa  
June 18, 1979

**CATTLE** 186. Compared with last Monday's market; Choice slaughter steers 67.50-72.00, Good 66.00-69.00, Standard 63.00-66.00, Utility 58.00-62.00. Choice slaughter heifers 66.00-69.00, Good 64.00-67.00, Standard 60.00-

63.50, Utility 55.00-60.00. Utility & Commercial slaughter cows 58.00-64.00, few to 66.00, Cutters 55.00-60.00, Canner & Low Cutter 53.50-56.00, Shells down to 50.00. Choice slaughter bullocks 68.00-74.25, Good 67.50-71.00, Standard 66.00-69.00, Utility 59.00-63.00. Yield Grade #1 1600-2000 lbs. slaughter bulls 72.00-76.00; yield grade #2 900-1600 lbs. 64.00-72.00. Medium & Good

300-500 lbs. feeder steers 65.00-80.00. **CALVES** 209. Choice vealers 104.00-118.00, Good 85.00-100.00, Standard & Good 70-90 lbs. 60.00-90.00. Farm calves, holstein bulls 90-120 lbs. 105.00-130.00, 70-90 lbs. 60.00-90.00; holstein heifers 80-130 lbs. 130.00-210.00. **HOGS** 319 US No. 1-2 200-240 lbs. barrows & gilts 45.50-47.50, No. 1-3 195-240 lbs.

44.00-45.00, No 2-3 250-270 lbs. 42.00-45.00, No. 1-3 130-180 lbs. 38.00-42.00. US No. 1-3 300-500 lbs. sows 30.00-34.00, No. 2-3 300-650 lbs. 28.00-30.00. Boars 24.50-28.50. **FEEDER PIGS** 50. US No. 1-3 20-35 lbs. feeder pigs 20.00-32.00 per head, few No. 1-3 35-50 lbs. 25.00-45.00 per head. **SHEEP** 14. Choice spring slaughter lambs 60.00-62.00, Good 52.00-58.00.

## Special Market

Special Slaughter Cattle Sale  
June 14, 1979  
Harrisonburg, Va.

There were 153 head sold. All cattle were graded by the representatives of the VDACS's Division of Markets, Livestock Section of USDA Standards and sold by the hundredweight.

**CHOICE AND PRIME STEERS**; 975-1300 lbs. 65.80-68.30 **SINGLES**; 1040-1290 lbs. 66.50-68.50 **GOOD STEERS**; 1080-1125 lbs. 64.50-65.70

**CHOICE HEIFERS**; 900-1000 lbs. 63.00-65.00 **SINGLES**; 985-1155 lbs. 57.50-64.75

## East Coast Carlot

Princeton, New Jersey  
June 20, 1979

Compared to Tuesday's close: trades again reported very light on most classes. Most buyers indicated long haul truck shipments arriving, but in many cases off schedule. Regional slaughter establishments report good spot interest for products. Eastern wholesalers indicated their customers having problems with fuel to make pick ups and delivery. Prime special fed veal steady to 5.00 higher. Good and Choice boning veal steady to 2.00 higher. Spring lambs 55 lbs. down. Generally steady limited test. No sales boneless beef reported.

### VEAL CARCASS-HIDE-ON

Prime (Special Fed): 180-240 lbs. 150.00-160.00, steady to 5.00 higher, including sales late yesterday.

### BONING TYPE

Good & Choice  
Northeastern Suppliers: Including sales late yesterday. 65-75 lbs. 136.00-138.00 LTD, all steady to 2.00 higher; 55-64 lbs. 134.00-136.00 LTD; 45-54 lbs. 132.00-134.00 LTD; 35-44 lbs. 130.00-132.00 LTD; 34 lbs. down 128.00-130.00 LTD.

Inshipped: 70-80 lbs. 138.00

LTD, all steady with Monday; 60-70 lbs. 136.00 LTD; 50-60 lbs. 134.00 LTD; 40-50 lbs. 132.00 LTD; 30-40 lbs. 130.00 LTD.

### SPRING LAMB CARCASS

#### Choice & Prime 3-4 1 1/2 Loads

55 lbs. down 130.00, part loads, generally steady.

#### BONELESS BEEF 2 1/2 Loads

90 pct chem lean, fresh 145.00, part loads; 80 pct chem lean, fresh 135.00, part load 137.00.

#### BEEF TRIMMINGS 1 Load

50 pct chem lean, fresh 56.50-57.00, part loads.

#### CURED AND PROCESSED MEATS 10 Loads

**SKINNED HAMS**: 16-19 lbs. 74.00-76.25, firm.

**SEMI BONELESS HAMS**: 14-17 lbs. 99.00, firm.

**BONELESS HAMS**: 13-17 lbs. 126.00.

Franks 70 Beef, 30 Pork 1 lb. pack 89.00, weak.

Bologna 70 Beef, 30 Pork 1 lb. pack 93.00.

Market courtesy of PDA.

## Lancaster Feeder Cattle

Lancaster, Pa.  
Fri., June 15, 1979

### Feeder Cattle

Today	273.
Last Friday	395
Last Year	370

**TREND**: Market not fully tested, insufficient receipts to establish a trend. Supply included 115 head sold in lots of 10 or more; balance sold in lots of three or less in a clean-up trade.

**FEEDER STEERS**: One lot Choice and Prime 800 lbs. 77.75, one lot 925 lbs. 70.25; one lot Choice 1100 lbs. 67.50, one lot Choice 960 lbs. 67.10, few head 825-890 lbs. 70.50-73.50; one lot mixed Good and Choice 800 lbs. 73.60, one lot 560 lbs. 78.00; couple lots 535-800 lbs. 72.00-76.50.

Market courtesy of USDA.



## GET THE WHOLE FAMILY INVOLVED

### CONSIDER A

# NEW BROILER BREEDING HATCHING EGG UNIT

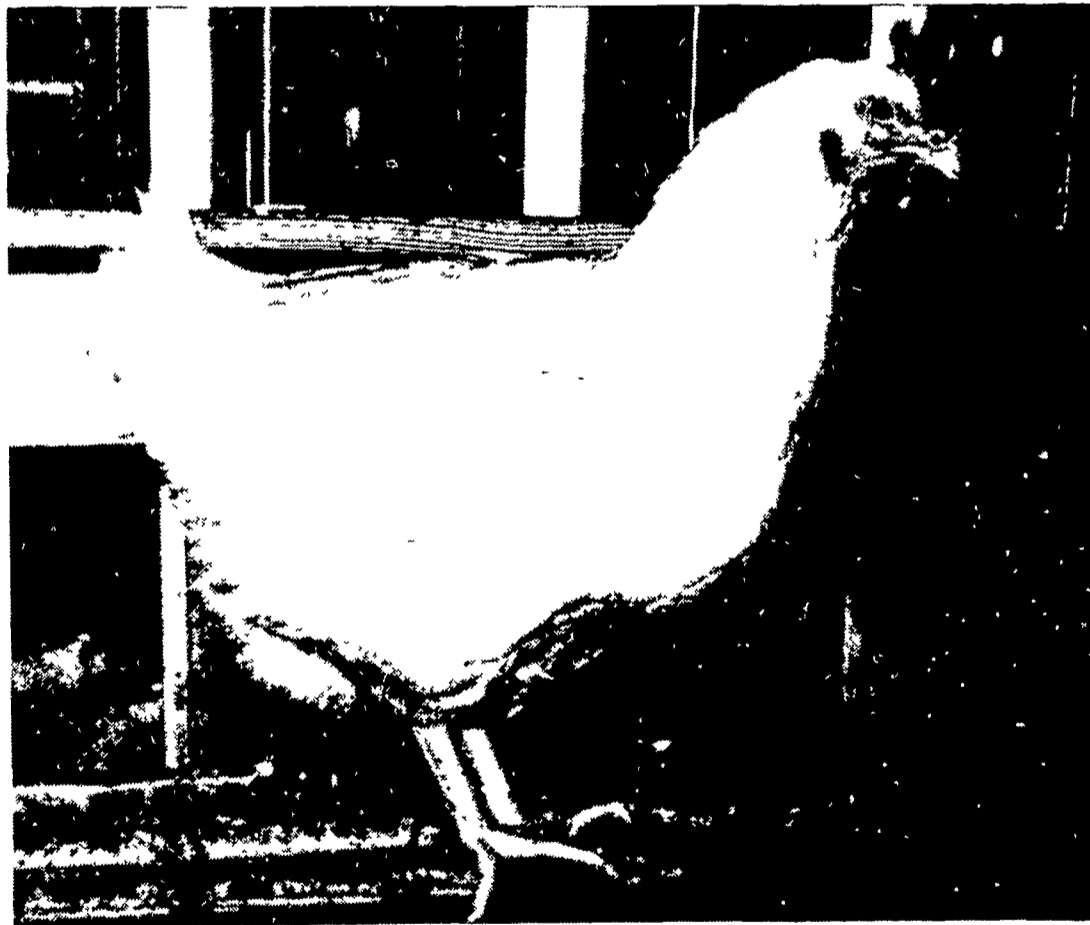
OR REMODELING YOUR EXISTING HOUSE FOR HATCHING EGG PRODUCTION

### FOR

## LONGENECKER'S HATCHERY, INC.

ELIZABETHTOWN, PA

ESTABLISHED SINCE 1920



LONGENECKER'S HATCHING EGG UNITS ARE SPECIALLY DESIGNED FOR EFFICIENT OPERATION.

Mail To LONGENECKER'S HATCHERY, INC  
P O Box 307, Elizabethtown, PA 17022

I AM INTERESTED IN  
 New Broiler Egg Unit  Remodeling Existing House (10-20,000 sq ft)

Name \_\_\_\_\_

Address \_\_\_\_\_

City \_\_\_\_\_

State \_\_\_\_\_ Zip \_\_\_\_\_

Phone \_\_\_\_\_

For More Information  
Call or Write  
**JOHN MARTIN**  
717-367-1545

# SPECIAL NOTICE

## HAY, STRAW & EAR CORN SALE

AT

## DAVID H. GOOD'S FARM MACHINERY SALE

EVERY WED. AT 12 NOON

ON NORTH MAPLE AVE., LEOLA, PA.

Home Phone 717-656-8911

Bus. Phone Wed. Only 717-656-9558