

# Livestock market and auction news

## Central U.S. Carlot

June 13, 1979

Compared to Tuesday's report: Choice steer and heifer beef 1.00-3.00 lower although trading limited and market poorly tested on the close. Demand poor and trade slow. Sales reported on 12 loads of steer and heifer beef.

### STEER BEEF

FOB Omaha Basis  
Choice 3 600-800 lbs. 106.50 slctd./early.

Choice 2 600-800 lbs. 108.00 slctd./early.

Choice 4 600-800 lbs. 95.50, 1.00 lower.

Choice 2 600-700 lbs. 105.00-105.50 slctd. late, gnrlly. 2.50-3.00 lower.

Choice 2-3 500-900 lbs. 98.00 (Hols. type) early.

### HEIFER BEEF

FOB Amarillo Basis  
Good 2-3 600-900 lbs. 101.50 early Packer to Packer, steady.

### HEIFER BEEF

FOB Omaha Basis  
Choice 3 500-700 lbs. 101.50 Monday divry., 3.00 lower.

Carcass cow beef in limited trading firm. Demand very uneven, generally good.

### COW BEEF

3 Loads

FOB Amarillo Basis  
Utility (BRKG.) 450 & up lbs. 85.50, firm.

### PRIMAL BEEF CUTS

Choice 3

6 Loads

FOB Omaha Basis  
FORES: 130-210 lbs. 88.00 selected.

FARM CHUCKS: 75-120 lbs. 88.50.

FOB Amarillo Basis  
ARM CHUCKS: 75-120 lbs. 79.00.

### BONELESS PROCESSING BEEF/BEEF TRIMMINGS

19 Loads

FOB Omaha Basis  
90 pct. chem. lean fresh 130.50.

50 pct. chem. lean fresh 53.00-53.50.

50 pct. chem. lean frozen 55.00.

FOB Amarillo Basis  
50 pct. chem. lean fresh 53.00-54.00

Compared to Tuesday's 2:15 report: Fresh pork loins 75-2.00 higher in very limited trading. Picnics 3.25-4.00 lower than Monday. Boston butts 1.50-2.50 lower. Spareribs steady - 50 lower. Skinned hams steady - 50 higher. Bellies strong - 2.00 higher. 72 pct. trmgs. weak - 2.75 lower. Trading slow; demand light to moderate. Sales reported on 62 loads, including 16 loads of trimmings and offal.

### FRESH PORK CUTS

LOINS: 14-17 lbs. 98.00, 75 higher; 17-20 lbs. 83.00-83.50, 1.50-2.00 hghr.; 17-20 lbs. 87.50; 20 & up lbs. 76.50; 1.00 higher.

PICNICS: 4-8 lbs. 46.00-46.75, 3.25-4.00 lwr. than Monday; 8 & up lbs. 46.00.

BOSTON BUTTS: 4-8 lbs. 62.50, 1.50-2.50 lwr.

SPARERIBS: 3/dn lbs. 99.00, steady; 3-5 lbs. 83.50-84.00, 50 lower.

SKINNED HAMS: 14-17 lbs. 66.75-67.00, steady; 17-20 lbs. 66.00, steady; 20-26 lbs. 62.50-63.00, steady - 50 hghr.; 26 & up lbs. 56.00, 50 higher.

BELLIES, SDLS.: 12-14 lbs. 43.50-45.00, 50-2.00 higher; 14-16 lbs. 43.50-45.00, 50-2.00 higher; 16-18 lbs. 41.50-43.50, stdy.-2.00 hghr.; 18-20 lbs. 39.00-39.75, 50-1.25 higher.

LIVERS: 80 lb. box 20.00 domestic; 60 lb. box 20.50 export.

PORK TRIMMINGS/BONELESS PROCESSING PORK (chemical lean): 72 pct. trmgs. 71.50-73.00 fresh, stdy.-1.50 hghr.; 72 pct. trmgs. 72.00 frozen, 2.75 lower; 72 pct. bnls. pics. 74.25-75.00 fresh.

Spring lamb 55 lbs. down steady to weak in limited sales. Boneless beef indicated firm, but both sides rather cautious

### VEAL CARCASS-HIDE ON

Prime (Special Fed) 180-240 lbs. LTD 158.00-170.00, 8.00-15.00 lower than most sales late yesterday, Monday.

### BONING TYPE

### HIDE ON

#### Good & Choice

Northeastern Suppliers: 65-75 lbs. LTD 136.00, firm; 55-64 lbs. LTD 134.00; 45-54 lbs. LTD 132.00; 35-44 lbs. LTD 130.00; 34 lbs. down LTD 128.00.

Inshipped: 70-80 lbs. 137.00-138.00, all firm; 60-70 lbs. 135.00-136.00; 50-60 lbs. 133.00-134.00; 40-50 lbs. 131.00-132.00; 30-40 lbs. 129.00-130.00

### SPRING LAMB

#### CARCASS

#### Choice & Prime 3-4

2 Loads

55 lbs. down 135.00, few 133.00, steady to weak; 55-65 lbs. few 130.00; 65-75 lbs. few 125.00.

#### BEEF TRIMMINGS

1 Load

50 pct chem lean, fresh 55.00-56.00 part loads.  
CURED AND PROCESSED

### MEATS

7 Loads

SKINNED HAMS: 16-19 lbs. 73.00; 19-23 lbs. 71.00.

SEMI BONELESS HAMS: 14-17 lbs. 91.00, firm.

BONELESS HAMS: 13-17 lbs. 116.00, firm.

Franks 70 Beef, 30 Pork 1 lb. pack 87.00, weak

Bologna 70 beef, 30 Pork 1 lb. pack 92.00, weak.

Market courtesy of USDA.

## GET THE WHOLE FAMILY INVOLVED

### CONSIDER A

# NEW BROILER BREEDING HATCHING EGG UNIT

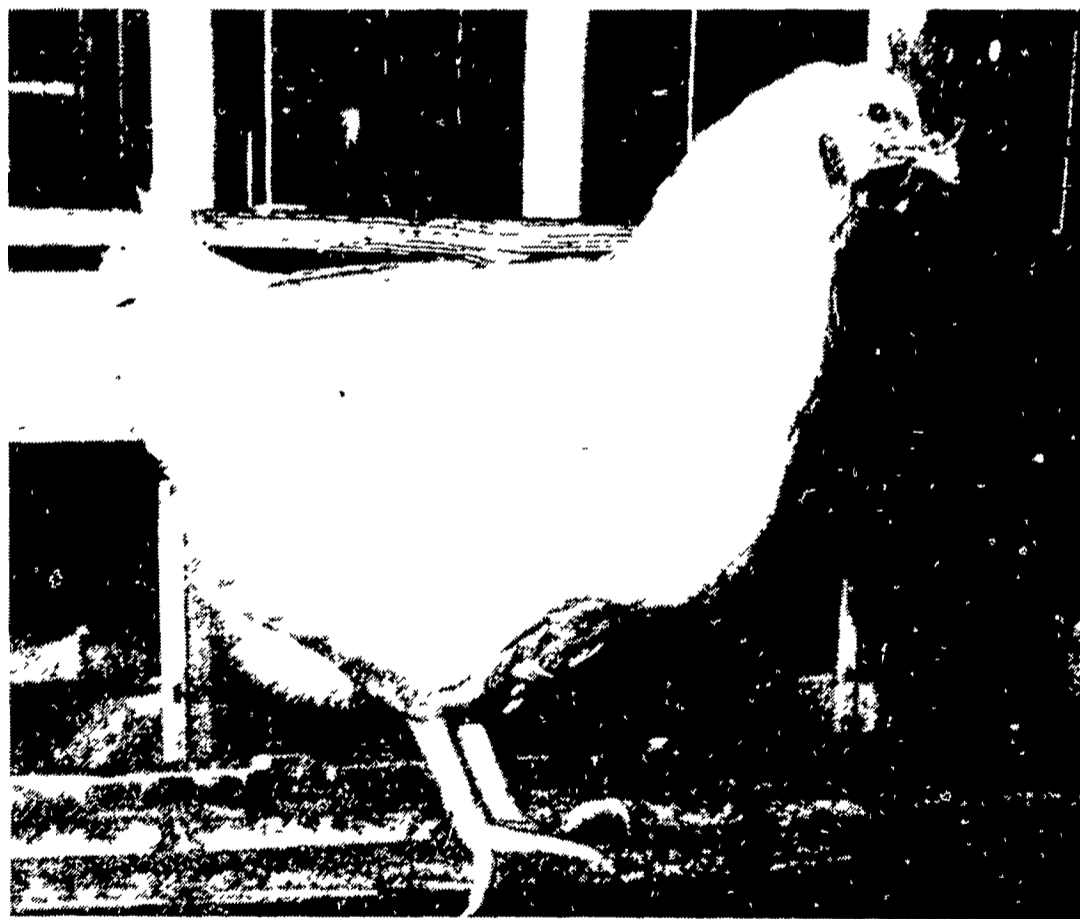
OR REMODELING YOUR EXISTING HOUSE FOR HATCHING EGG PRODUCTION

### FOR

## LONGENECKER'S HATCHERY, INC.

ELIZABETHTOWN, PA

ESTABLISHED SINCE 1920



LONGENECKER'S HATCHING EGG UNITS ARE SPECIALLY DESIGNED FOR EFFICIENT OPERATION.

# SPECIAL NOTICE

## HAY, STRAW & EAR CORN SALE

AT

## DAVID H. GOOD'S FARM MACHINERY SALE

EVERY WED. AT 12 NOON

ON NORTH MAPLE AVE., LEOLA, PA

Home Phone 717-656-8911

Bus Phone Wed Only 717-656-9558

For More Information  
Call or Write  
**JOHN MARTIN**  
717-367-1545

Mail To LONGENECKER'S HATCHERY, INC  
P O Box 307 Elizabethtown PA 17022

I AM INTERESTED IN  
New Broiler Egg Unit Remodeling Existing House (10 20 000 sq ft )

Name

Address

City

State

Zip

Phone