

Lancaster County FWS board meets

EPHRATA -- The Executive Board of Lancaster County Farm Women

Societies met on June 5 at the Salem Lutheran Church, Ephrata. Hostesses were

Miriam Moore, Society 3, Mary Alice Fyock, Society 1, and Miriam Keneagy of

Society 7. The membership for Lancaster County was reported to be 986

Conestoga View will be visited by Societies 4 and 5 in June, and Societies 6 and 7 in July. Bingo is played with many prizes.

The County project was voted upon and the recipients for this year will be the Blind Association.

The state FWS project, making something useful from junk, will be worked on for the next few months. Each Society will choose their prize contribution. Winning entries will be shown at the County Convention on November 3. The winning County entry will then compete at the State Convention in January. Lancaster County members are urged to participate in the "Recycle Your Junk" contest.

Somerset County Farm Women have invited the Lancaster County Societies to their 65th anniversary on October 6, at Seven Springs. Society members are reminded to present programs urging the use of

smoke alarms and stress the importance of stairway safety.

The program committee for the convention will be: Miriam Moore, Society 3; Mirial Saylor, Society 6; Mary Alice Fyock, Society 1; Kathryn Heisey, Society 8; and Fran Sauder, 2nd vice president.

A county picnic has been planned for the August meeting. It will be held August 1, 12 noon, at the Lampeter Community Grounds. Place settings and a covered dish should be brought. Drinks will be provided. Games will be played for the children.

Picnic Committee members are: Helen Witmer, Society 22; Jean Breneman, Society 9; and Velma Hess, Society 28.



**9H160
CLEM**

CLEM is Double-Plus

Plus
on Type

84%
Repeatability

**+1154
P.D. Milk**

Udder Improving
Sire

from

R D #2, Tunkhannock, Pa 18657
Phone (717) 836-3127 or 3168

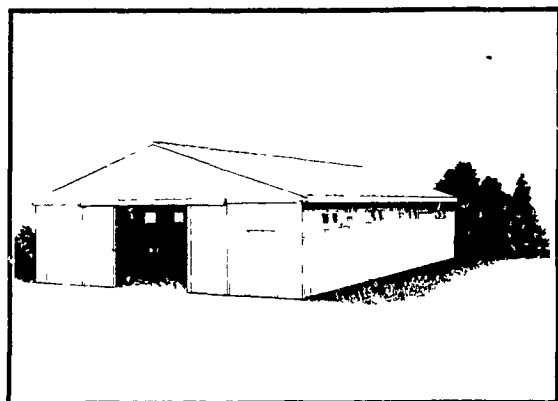
9H160 Mor Clem Bootmaker CLEM
USDA 1 79 PD (74) +1154M +22F - 13% +\$96 84% RPT
HFA PDT + 06 39% Rpty

9H160 CLEM sires daughters with strong and smooth fore udder attachments strong udder support and correct teat size They also excel in strength of topline and milk out
CLEM is +1154 PDM and + 06 PDT His current price makes him one of the best values in A1 today

AGWAY

BONANZA of BUILDING VALUES

PRICES GOOD THROUGH JULY 31, 1979



LEASE IT!
ONLY \$235/mo.*
FOR 96 mos.

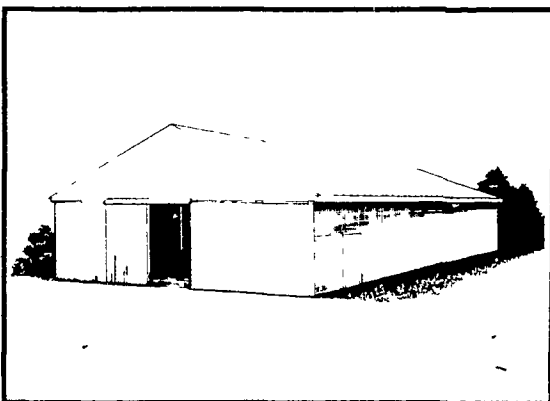
*No monthly payment until October 1, 1979

HORSE BARN

36' x 40' x 8'6" clear span
• eight 10 x 12 stalls with sliding windows and protective grilles • two 12 x 8' split no-sag easy slide doors
• Vent A-Ridge and screened soffit for natural ventilation
• insulated Alcoa aluminum roofing • Republic painted steel siding

Lease it through Agri-Lease Agway's own leasing plan your capital keeps on earning interest and you may have a substantial tax advantage. Prices do not include site preparation fill lightning rods heating wiring plumbing or drainage and apply only to contracts signed by July 31 1979. Lease terms are quoted on standard building packages leased over 96 months. Pricing is based on 30 lb/sq ft live roof load with heavier loads optional.

For details contact your nearby Agway store or write
Telmark Inc.
Box 4943, Syracuse, NY 13221



LEASE IT!
ONLY \$540/mo.*
FOR 96 mos.

*No monthly payment until October 1, 1979

RIDING ARENA

70' x 80' x 14' clear span space
• 14' sidewalls permit unobstructed riding • perimeter kickboard • plastic gables and continuous light strip provide natural lighting • two 12' x 12' sliding doors and one pass door
• optional Onduline roof with 25-year no-leak warranty

No Need to Buy Now...LEASE IT

At the end of your lease the Agway Triple Option Plan enables you to

- 1 Renew your lease at a reduced rental OR
- 2 Buy out at fair market value OR
- 3 Let Agway remove the building

Agri-Lease®



If you have fat
cattle or
need feeders ...

**THINK
NEW HOLLAND**

BEEF SALES

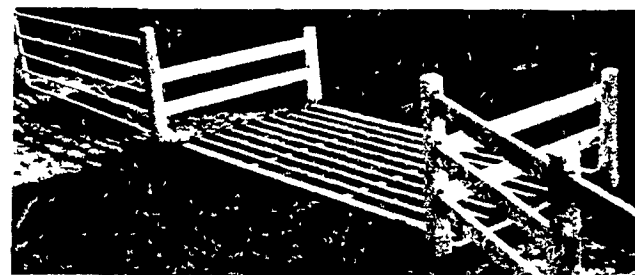
MONDAY - 1:30 P.M.
THURSDAY - 11:00 A.M.

Sale Order - Fat Bulls, Steers, Stockers and
Beef Cows
Veal Calves - 4:30 Thurs.

NEW HOLLAND SALES STABLES, INC.
Phone: 717-354-4341

Daily Market Report - Phone: 717-354-7288
Abe Diffenbach, Manager
Field Representatives - Alan Diffenbach 717-456-9806
Luke Eberly 215-267-6608

**CATTLE DON'T NEED GATES TO
KEEP THEM IN
AND YOU DON'T NEED GATES
TO WEAR YOU OUT!**



Save a Lifetime of Gate Opening with
THE SMITH CATTLEGUARD

- ONE PIECE*
- PRECAST CONCRETE
- STEEL REINFORCED

Sold direct to you, the Smith Cattleguard can be installed in two hours or less with no additional construction. 12 ft model only \$295, 14 ft model only \$320, 16 ft model only \$350.

Home Office
Midland VA 22728
703 439 3266

**SMITH
CATTLEGUARD
COMPANY**
*World's Largest
Manufacturer
of Cattleguards*

Please send me the free information on
Cattleguards - Concrete panel fence
Stock waterer tanks - Feed bunk

Heated automatic waterers

Name _____

Address _____

City _____

State _____ Zip _____

Phone _____

Department LF _____