

Farmers Markets directory available

HARRISBURG — The 1979 edition of the Pennsylvania Farmers Markets — Farmer-to-Consumer Directory, published by the Pennsylvania Department of Agriculture's Bureau of Rural Affairs, will be available June 15 across the state, it was announced today by State Agriculture Secretary, Penrose Hallowell.

Hallowell noted that the directory provides such information as locations, harvesting seasons and types of commodities sold at the hundreds of direct farmer-to-consumer outlets across the state. Listed in the publication are roadside markets, pick-your-own orchards and fields, milk juggers, Christmas tree farms and markets for maple products and organically grown foods. Pennsylvania is the acknowledged leader in direct farmer-to-consumer marketing. Last year,

roadside markets, pick-your-own operations and milk juggers accounted for more than \$120 million in farm products sold.

Hallowell noted that direct marketing is important to both the farmer and the consumer. "More farmers are using direct marketing as an assurance that they will have a market for their products. Consumers have found that they are getting nutritious flavorful foods at reasonable prices."

In an effort to make this directory more easily available to the public, the Department of Agriculture has enlisted the assistance of both public and private

agencies. Hallowell said the Department of Commerce was placing copies of the directory in tourist information centers and that the Liquor Control Board would make copies available at selected State Stores.

In addition, copies will be available through Senior Citizen Centers, Nutrition Counselors, members of the Restaurant Association, the 67 County Extension Service offices, 200 food clubs, 200 Agway retail stores, 200

hotels and motels across the state, and all public and college libraries.

A limited number of copies are available to persons who write to "Farmers Markets," Pennsylvania Department of Agriculture, 2301 North Cameron Street, Harrisburg, Pa. 17120.

The Farmer-to-Consumer Directory is published annually by the Agriculture Department as a service to farmers and consumers alike.

Pa. broiler placements up 11%

HARRISBURG -- Placements of broiler chicks in the commonwealth during the week ending June 2 were 11 per cent above the same week a year ago, according to the Pennsylvania Crop Reporting Service.

The placements were 2,359,000, about the same as the previous week. Average placements during the past nine weeks were 11 per cent above a year earlier.

Placements of broiler chicks in the key 21 poultry-producing states were 83,998,000, one per cent

above the previous week and nine per cent above the same week a year earlier. Average placements during the past nine weeks in the 21 state were nine per cent above a year ago.

The number of broiler-fryers slaughtered in Pennsylvania under federal inspection during the week ending May 23 was 2,103,000, with an average weight of 4.00 pounds.

MILK

THINK

Cheese

FOR THE BALANCED DIET

Rain

(Continued from Page 1)

market. And that which has been sold has not been of the best quality.

"The alfalfa has been on the older side, and there has been some stem rotting," one reported. And another added, "Some hay got spoiled, and what is being made now isn't of top quality."

Concerning the future of the hay market, and how this poor first cutting will affect prices, farmers reported that they thought that this poor first cutting would have little effect on the hay market.

"You don't look to the first cutting for your best hay, anyway. A lot of that hay will go in the silo, although this year farmers are even having problems getting it there," one explained. "But now if we have that kind of weather for the second, third, and fourth cutting, then we'll be in trouble."

"Last year there was a lot of hay made," one farmer commented. "And there still is quite a bit of hay available. But I sure hope that the rainy weather doesn't continue throughout the haymaking season."

HIGH PRESSURE WASHING

OF POULTRY HOUSES AND VEAL PENS

BARRY L. HERR

1744 Pioneer Road, Lancaster, Pa.
Phone: 717-464-2044

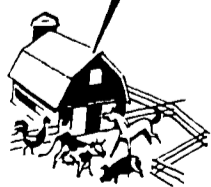
LIGHTNING IS STRIKING!

Are Your Buildings Safe?

LIGHTNING RODS

Now Available

Let Us Estimate The Cost Of Protecting Your Buildings No Obligation

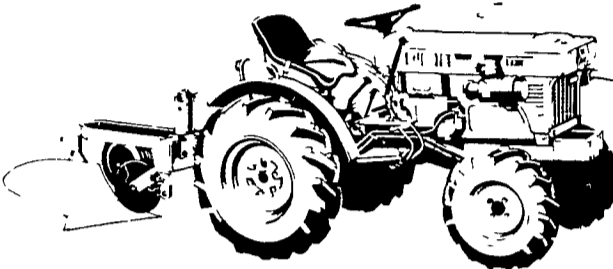


DAVID'S ELECTRIC SERVICE
400 N Race St
Richland, PA 17087
717-866-7588 (Call
717-272-8580 Collect)

HAROLD C FOSTER
Box 96A
Star Route
Huntingdon PA 16652
814 643 0248
(Call Collect)

KUBOTA DIESEL POWER DOES IT!

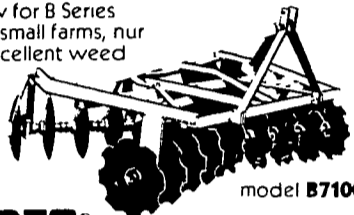
Find Out How and Why At KELLER BROS. TRACTOR CO.



16-HP B7100DT with four-wheel drive, with plow.

- 3 cylinder diesel engine
- 6 forward speeds, 2 reverse
- 3 speed standard rear PTO
- Front engine PTO
- Dependable hydraulic lift system

Kubota disc harrow for B Series tractors is ideal for small farms, nurseries, orchards. Excellent weed control implement.



KUBOTA

Test drive a Kubota diesel tractor now at:

KELLER BROS. TRACTOR CO.

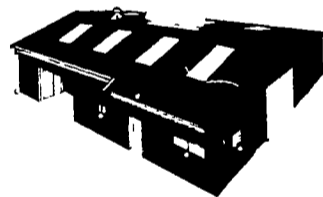
Buffalo Springs, PA.
Rt 419 Between Schaefferstown
& Cornwall, Lebanon Co
PH: 717-949-6501



VERNON MYERS, INC.

STEEL BUILDINGS & GRAIN STORAGE

R.D. 4 - Box 845
Lebanon, Pa. 17042
Phone: (717) 867-4139



ASCS LOAN-APPROVED DEALER

OTHER BIN COMPANIES HAVE JUST HAD A PRICE INCREASE. MFS IS TEMPORARILY HOLDING THE LINE. BUY NOW TO **SAVE \$\$\$\$\$\$\$\$**

WE OFFER COMPLETE ERECTION ON ANY SIZE OR TYPE OF GRAIN STORAGE FACILITY!

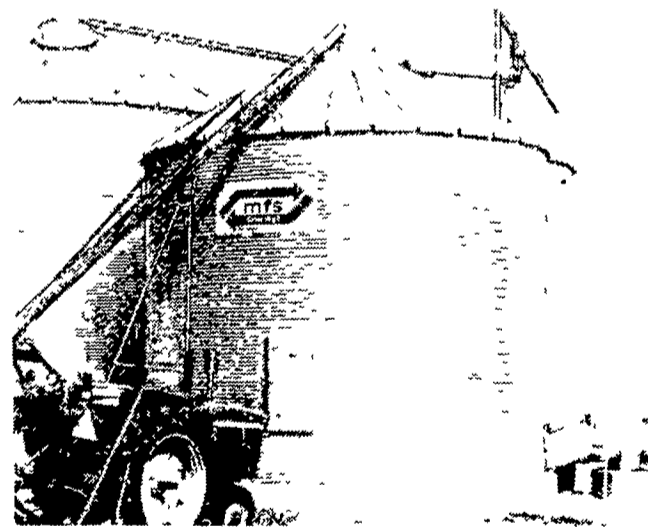
the final link

WE SPECIALIZE IN YORK BUCKET ELEVATORS AND REDEX DRYERS.



QUONSET

Look what's happened to the hut!



... that puts YOU in complete control of your crop, from harvest to market - your own, on-the-farm grain drying and storage system. See us soon for full information and free systems planning services. We can show you why mfs "Stor-Age" is the best choice you can make.

COMMERCIAL and AGRICULTURAL BUILDINGS
We Offer Complete Erection On Any Size Or Style Building

Mail Coupon Today!

SEND STEEL BUILDINGS LITERATURE
SEND GRAIN STORAGE LITERATURE

NAME _____
ADDRESS _____
CITY _____ STATE _____ ZIP _____
TELEPHONE _____