

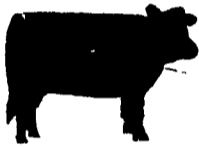
Hog Markets

Lancaster Hogs

Lancaster, Pa.
Sat., June 9, 1979
 Total 890 head.
 U.S. 1, 200 to 235 lbs. 44.75-46.00; U.S. 1-2, 200 to 240 lbs. 44.00-44.60; U.S. 2-3, 200 to 245 lbs. 43.25-44.00; few heavyweights, 260 to 278 lbs. 41.10-43.25.
Mon., June 11, 1979
 HOGS: Compared to last Wednesday, barrows and gilts mostly 2.00 higher.
BARROWS AND GILTS:
 US 1-2 200-240 lbs. 46.25-46.75, few 47.10-47.75; US 1-3 220-260 lbs. 45.25-46.25.
Wed., June 13, 1979
 HOGS: Barrows and gilts 1 00-1.50 lower than Monday.
BARROWS AND GILTS:
 US 1-2 200-240 lbs. 44.75-45.35; Few Selected US 1 210-235 lbs. 46.25-46.50; US 1-3 220-260 lbs. 44.25-44.75.

Indianapolis Hogs

Thurs., June 14, 1979
 HOGS: 1700. Barrows & gilts moderately active, 200-240 lbs. 75-1.00 higher. US 1-2 200-240 lbs. 43.00-43.75.
 - Sows: Slow, steady to weak, instances 25 lower on wts. over 500 lbs. US 1-3 300-500 lbs., mostly 31.50-32.00; 500-650 lbs. 32.00-32.74, pkg. 33.00.



New Holland Feeder Pigs

New Holland, Pa.
Wed., June 13, 1979
Feeder Pigs
 Today 1249
 Last Wednesday 2247
 Last Year 2237
 Compared to last Wednesday feeder pigs uneven, 30-50 lbs. 15.00-20.00 higher, 50-80 lbs. 5.00-10.00 higher. All pigs weighed on arrival and sold by the hundred weight.
 US 1-2 138 head 30-40 lbs. 82.00-96.00; 217 head 40-50 lbs. 74.00-85.00; 296 head 50-60 lbs. 68.00-78.00; 112 head 60-80 lbs. 58.00-70.00.
 US 2-3 190 head 20-40 lbs. 76.00-87.00; 110 head 40-50 lbs. 63.00-68.00.
 Market courtesy of USDA.

New Holland Hogs

New Holland, Pa.
Mon., June 11, 1979
Hog Auction
 Today 1460
 Last Monday 1976
 Last Year 1278
TREND: Barrows and gilts 50-1.00 higher than last Monday, some early sales only 25-50 higher.
BARROWS AND GILTS:
 US 1-2 200-240 lbs. 45.10-46.10, few early 44.25-44.75. Couple lots US 1 205-235 lbs. 46.00-46.60. US 1-2 190-260 lbs. 43.75-44.75. US 2-3 few 270-285 lbs. 36.75-39.00, few 300-325 lbs. 31.25-35.00.
 Market courtesy of USDA

Peoria Hogs

Thurs., June 14, 1979
 HOGS 3800 Barrows & gilts active, steady US 1-2 200-230 lbs 43.00-43.50, 40 head 43.75; US 1-3 200-240 lbs 42.00-43.00
 Sows: 1 00-1 50 higher - US 1-3 350-500 lbs 33.50, few 34.00; 500-650 lbs 33.00-34.00

St. Louis Hogs

Thurs., June 14, 1979
 HOGS: 6500 Barrows & gilts active, 25 to mostly 50 higher. US 1-2 200-240 lbs 42.75-43.00; Mixed US 1-3 230-250 lbs. 42.00-42.75.
 Sows: 50 higher. US 1-3 300-600 lbs. 33.00-34.00

Vintage Hogs

Paradise, Pa.
Saturday, June 9
 Total 735 head All prices per hundredweight.
 No. 1-2, 210 to 240 lbs, 44.00-45.00; No. 2-3, 210 to 245 lbs 43.25-44.25; sows 35 50-38 50; boars 31.50-34.00.

Monday, June 11
 Heavyweights 45 50-46 25, sows 32.00-34.00

Wednesday, June 13
 Total 474 head.
 No. 1-2, 210 to 240 lb. 44 00-44.75; No. 2-3, 210 to 240 lbs 43.00-44.00; lightweights 43.00-44.50; heavyweights 43 00-44.00; sows 31.00-35.50; boars 28.50-31.50.



Lancaster Feeder Pigs

Lancaster, Pa.
Tues., June 12, 1979
Feeder Pigs
 Today 1274
 Last Tuesday 1341
 Compared to last Tuesday US 1-2 feeder pigs 6 00-10 00 higher; US 2-3 fully steady. All pigs weighed on arrival and sold by the hundred weight.
 US 1-2 115 head 22-40 lbs. 71 00-90.00; 411 head 40-50 lbs. 72.00-87 00; 360 head 50-60 lbs. 65.00-80 00; 60 head 60-65 lbs. 63 00-75 00.
 US 2-3 52 head 30-40 lbs. 65.00-79 00; 55 head 40-56 lbs. 64.00-71 00.
 US 2 111 head 46-52 lbs. 63 00-69 00.
 Market courtesy of USDA.

Pa. Grain

June 11, 1979
 Compared with last Monday's market, for Southeastern, Central and South Central Pennsylvania: Corn steady to 10 cents higher; Wheat steady to strong. Barley & Oats steady; Ear Corn steady to \$1 higher.
 Prices paid delivered to dealers dock.
 (All prices per bushel, except for Ear Corn per ton.)
Southeastern Pa.
 Corn No. 2-y range 2.80-2.95, average 2.82, few down to 2.55; Wheat No. 2 range 3.65-4.25, average 3.90; Barley No. 3 range 1.60-1.75, average 1.69; Oats No. 2 range 1.40-1.65, average 1.58; Ear Corn range 70.00-80 00, average 76.26.
Central Pa.
 Corn No. 2-y range 2.40-2.85, average 2.63; Wheat No. 2 range 3 50-3.80, average 3.64; Barley No. 3 range 1.60-1.80, average 1.69; Oats No. 2 1.30-1.60, average 1.48; Grain Sorghum No 2 range 2.20-2.70, average 2.43; Ear Corn range 60 00-72.00, average 66.90.
So. Central Pa.
 (Franklin and Cumberland Counties)
 Corn No. 2-y range 2.45-2.70, average 2.51; Wheat No. 2 range 3.40, average 3.48, few to 3.80; Barley No. 3 range 1.50-1.65, average 1.57; Oats No 2 range 1.55-

Chicago Grain Futures

(Closing Bids as of Thursday, June 14, 1979)

	Corn	Wheat	Soybeans	Soybean Meal
July	2.84	4.40	7.81	211.80
Sept.	2.91	4.44½	7.94	215.50
Nov.			7.97	
Dec.	2.98¼	4.58¾		220.50
Jan.			8.09½	
Mar.	3.08¼	4.67½	8.21½	224.50

Trend - Corn is higher, Wheat is higher, Soybeans are higher, Soybean Meal is higher.

Market Provided by Commodity Department
 Reynolds Securities, Inc.

Futures Trading

Closing Bids as of Thursday, June 14, 1979

	Chicago Cattle	Chicago Hogs	New York Maine Potatoes	Chicago Fresh Eggs
June	69.90	43.25		56.60
July		41.35		57.30
Aug.	66.85	38.90		57.00
Sept.				61.80
Oct.	65.60	36.35		
Nov.			6.28	62.20
Dec.	67.40	38.20		64.80
Jan.	69 00			
Feb.	69.62	39.97		
Mar.				

Trend - Cattle are mixed, Hogs are lower, Potatoes are higher, and Eggs are higher.

Market Provided by Commodity Department
 Reynolds Securities, Inc.

U.S. Inspected Livestock Slaughter

Estimated Daily Livestock Slaughter Under Federal Inspection

	CATTLE	CALVES	HOGS	SHEEP
This Week	468,000	33,000	1,308,000	74,000
Last Week	482,000	32,000	1,311,000	74,000
Last Year	541,000	58,000	1,035,000	82,000

Market courtesy of USDA.
 1.70, average 1.63; Ear Corn range 64.00-70.00, average 66.25.

Southeastern, Central and South Central Summary

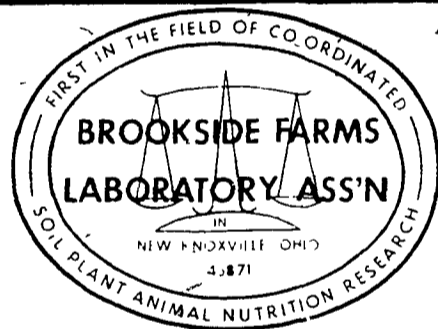
Corn No. 2-y range 2.50-2.90, average 2.71; Wheat No. 2 3.50-4.00, average 3.73; Barley No 3 range 1.55-1.75, average 1.67; Oats No. 2 range 1.40-1.65, average 1.54; Ear Corn range 62.00-80.00, average 70.83.

Western Pa.

Corn No. 2-y range 2.35-2.78, average 2.53; Wheat No. 2 range 3.10-3.40, average 3.23; Barley No. 3 range 1.55-1.60, average 1.58; Oats No. 2 range 1.35-1.60, average 1.42.



CONTACT:
JOHN CAMPBELL
 Atglen, PA
 (215) 593-5529
GARY McGEE
 Spring Run, PA
 (717) 349-7300
DAN DERR
 Conowingo, MD
 (301) 378-3280



National Reputation — Local Service

WALTER M. DUNLAP AND SONS

The leading firm on the Lancaster Market

Tel (717) 397-5136

HOG PRODUCERS PLEASE TAKE NOTICE

Since our BUTCHER HOG SALE begins at 9:30 on Saturday morning, we would like to suggest, if it is at all possible, that you consign your hogs on that particular day to arrive in time for the start of the market. Please remember that we are prepared to receive hogs from 6:00 A.M., and that all hogs are weighed upon arrival; therefore, no shrink. By having your hogs in on time, there will be no waiting to unload and, when warm weather arrives, your hogs will be in better shape to sell. We sincerely appreciate your cooperation in this matter.

FEEDER PIG SALE AT LANCASTER STOCKYARDS
Tuesday, June 19 at 1:00 P.M.

Consign all your feeder pigs to Dunlaps where they will be handled by a capable and experienced staff. Get state tags at our office thereby saving 25¢ expense. Pigs received from 6 A M to 11 A M day of sale

"Hot-Shot" Products Sales & Service

S. K. SHOTZBERGER, INC.

LIVESTOCK TRANSPORTATION

Gene Zwally, President
 Marvin Johns, Secy. Treasurer
 P.O. Box 925, Lancaster, PA 17604
 Phone: 393-4641 (day or night)

J.M. HOOBER Inc. LANCASTER STOCKYARDS

Your Livestock Broker
 Serving You Since 1895.

- Up-to-date market information.
- We sell slaughter cattle, fat hogs, calves, lambs, feeder pigs.
- Suppliers of feeder cattle.

NEXT FEEDER PIG SALE
TUESDAY, JUNE 19 — 1 P.M.

Consign your livestock to J. M. Hooper, Inc., where it will receive personal care and service.

Call Us
 Phone (717) 397-6191 - Home 569-2084
 Small Stock Division - 397-6191
 Home - 626-5659

HAY, STRAW & GRAIN HAULED
 TO LOCAL AUCTIONS
 ALSO HAVE MARKET FOR MULCH HAY
MEADOW GREEN FARMS
HOWARD WEAVER

RT. #1
 Richland, PA 17087
 For Faster Service
 Call Between
 5 A M & 8 A M
 Tuesday Only
 717-933-4080