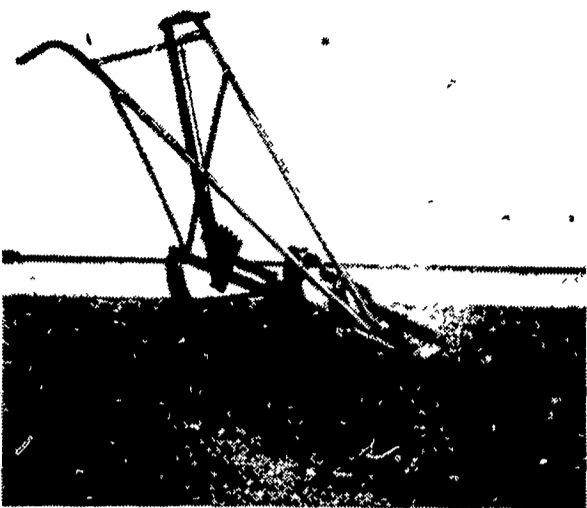


**JUNE IS DAIRY MONTH**

**CUSTOM BUILT SHOVEL HARROWS**



ADJUSTABLE WIDTHS  
8" to 24"

**JACOB M. STOLTZFUS**

2870B Church Road  
Route 1  
Bird-In-Hand, PA 17505

**Livestock market and auction news**

**Special Market**

Special Slaughter Cattle Sale  
June 6, 1979  
Madison, Va.

There were 110 head sold. All Cattle were graded by the Representatives of the VDACS's Division of Markets, Livestock Section of USDA standards and sold by the hundredweight.

Choice Steers 1000-1200 lbs 63.50-66.00; Choice Single Steers 62.00-66.25, Good Steers 950-1150 lbs 61.00-64.50, Good Single Steers 59.00-64.00; Choice Heifers 950-1050 lbs 64.00-66.00; Choice Single Heifers 60.00-64.00

**Pa. Auction Summary**

Of 12 livestock auction market reports. June 15, 1979  
CATTLE 6166. Compared

to 6883 last week and 6883 a year ago. Compared with last week's market, slaughter steers, sl heifers & sl bulls steady to 1.00 higher. Sl cows highly uneven, mostly steady to 1.50 higher. Sl bullocks steady to 1.50 higher. High Choice & low Prime sl steers 68.50-72.00, Choice 66.00-72.25, Good 62.00-68.00, Standard 60.00-65.00. Choice sl heifers 64.00-69.00; Good 62.00-65.00; few Standard 55.00-62.00. Utility & Commercial sl cows 50.50-62.00, mostly 51.50-58.00; Cutters 48.00-56.00; Canner & L Cutter 42.00-50.00, Shells down to 40. Sl bullocks 67.00-72.00, Good 64.00-69.00. Yield Grade #1-2, 1100-2200 lbs. 62.00-73.00.

FEEDER CATTLE: Few Good & Choice 400-750 lbs. steers 69.00-90.00, few Good & Choice 350-600 lbs heifers 65.00-85.00.

CALVES 2206. Compared to 2310 last week and 3190 a year ago. Vealers grading good & choice 3.00-5.00 lower; standard & low good

steady to 10.00 lower, few Prime vealers 108.00-120.00, choice 95.00-113.00, Good 85.00-102.00, Standard & Good 90-110 lbs. 70.00-95.00, few down to 60.00; 70-90 lbs. 60.00-80.00, few down to 40.00.

FARM CALVES: Hol. Bulls 90-125 lbs. 100.00-152.00, Hol Heifers 90-135 lbs. 125.00-220.00

HOGS 7139. Compared to 7453 last week and 6109 a year ago. Barrows and gilts steady to 1.00 lower. US No. 1-2 200-240 lbs. barrows & gilts 42.50-46.00, No 1-3 195-250 lbs 42.00-45.00, No. 2-3 195-260 lbs. 40.50-43.00, few No 1-3 150-190 lbs. 38.00-44.00. SOWS 2.00-3.00 lower, US No. 1-3 300-600 lbs. sows 28.00-35.00, few No. 2-3 400-750 lbs. 27.00-31.00. BOARS 21.00-35.00.

Graded Feeder Pigs - all per hundred weight 5.00-15.00 higher. Total 2533. Compared to 3588 last week and 2237 a year ago.

U.S. 1-2 30-40 lb. 80.00-96.00; 40-50 lb. 72.00-87.00; 50-60 lb. 65.00-80.00; 60-80 lb.

68.00-75.00 U.S. 2-3 20-40 lb. 65.00-87.00; 40-55 lb. 63.00-71.00.

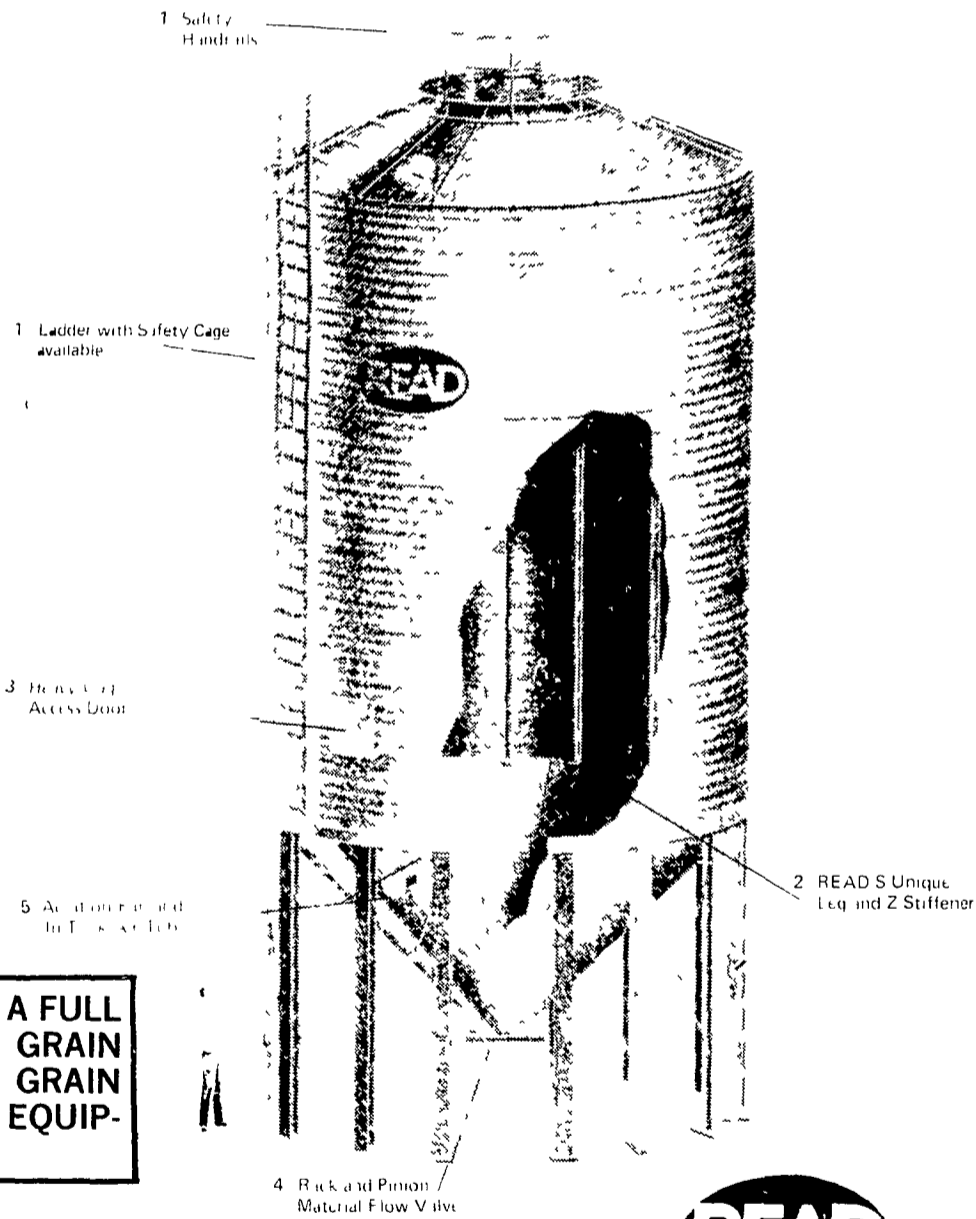
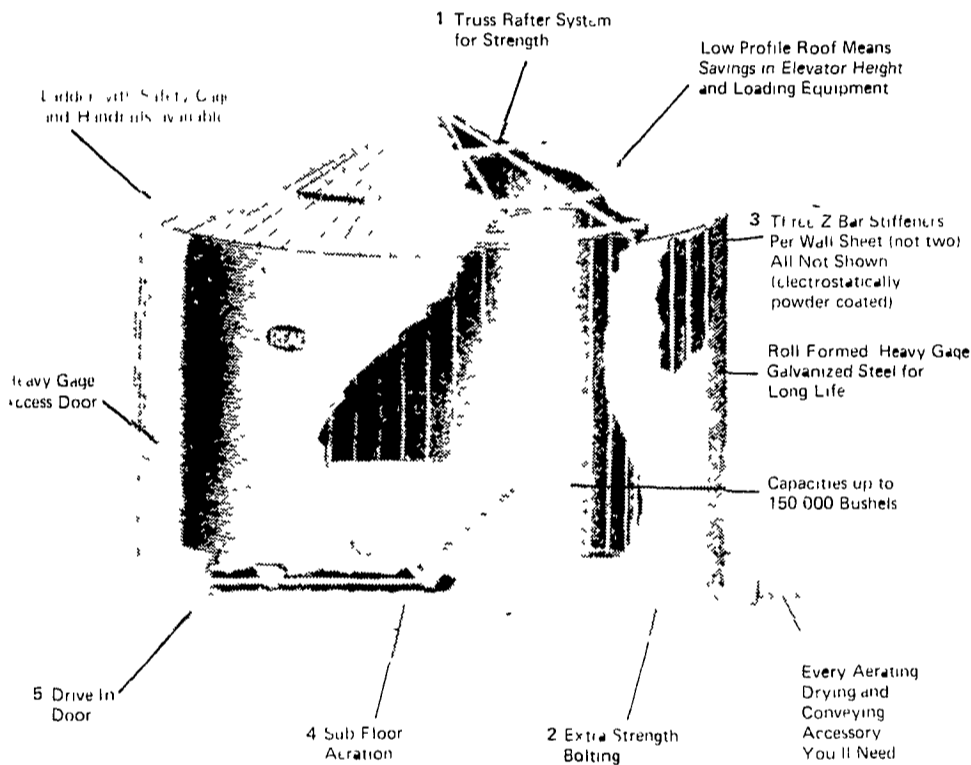
FEEDER PIGS 1105. Compared to 1271 last week and 721 a year ago. Steady to strong. US No. 1-3 25-35 lbs. feeder pigs 20.00-32.00 per head, No. 1-3 35-50 lbs. 29.00-42.00.

SHEEP 582. Compared to 711 last week and 767 a year ago. Spring sl. lambs steady to 3.00 lower. Choice 60-100 lbs 65.00-79.00, few Good 50-100 lbs. 58.00-68.00. Slaughter ewes 15.00-46.00.



**GRAIN SYSTEMS THAT WORK...**

**AS HARD AS YOU DO!**



The Grain Bin From



LET US HELP YOU DESIGN AN ECONOMICAL GRAIN SYSTEM TAILORED TO YOUR SPECIFIC NEEDS.  
★ FACTORY DISCOUNTS STILL IN EFFECT!

WE STOCK A FULL LINE OF GRAIN BINS AND GRAIN HANDLING EQUIPMENT.



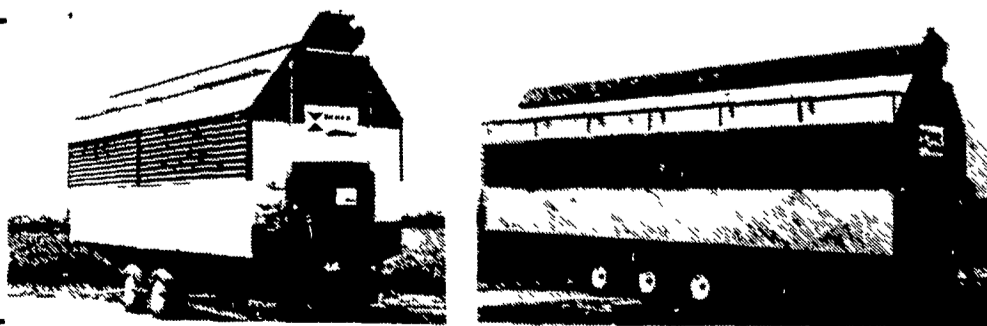
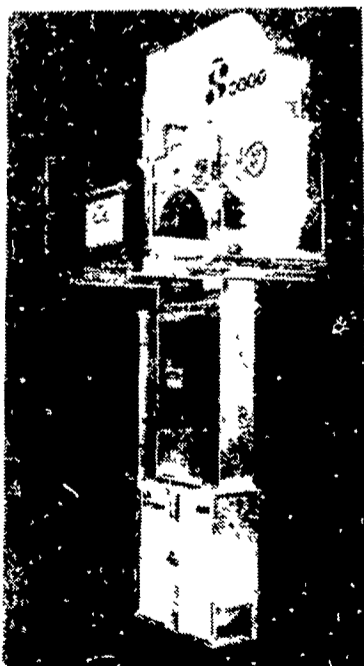
GALVANIZED ELEVATOR LEGS

REDEX DRYERS

- High Quality Drying
- Low Drying Cost

GUARANTEED CAPACITY!

THE HOPPER GRAIN TANK FROM READ



**KIMMICH FARM EQUIPMENT CO.**

P.O. Box 5190, Neffsville, PA (Lanc. Co.)

Phone 717-684-3829 or 684-3830