

Livestock market and auction news

St. Louis Cattle

June 7, 1979

Weekly Cattle Review: Receipts this week 4,400; week ago 4,200; year ago 6,000. Compared last weeks close, slaughter steers 3.00-3.50 lower. Slaughter heifers 2.50-3.00 lower. Cows 7.00-8.00 lower. Bulls 2.00-3.50 lower. Slaughter supply fully 50 percent slaughter steers, about 30 percent heifers and near 15 percent cows.

Sharp price declines in slaughter cattle the past week, couple with other recent losses, dropped prices substantially from the recent record highs. Slaughter steers closed the week 7.00-9.00 lower than the record high of early May and are at the lowest levels since mid-March. Slaughter heifers dropped 7.00-7.50 from the record highs of late April, and are at the lowest point since mid-March. Cows finished the week 8.00-10.00 lower than the record high of mid-May and are the lowest since January.

SLAUGHTER STEERS: Mixed choice and prime 2-4 1050-1300 lbs. on Monday 69.00-70.00, mostly 69.00-69.50, load and part load 1100-1150 lbs. 70.50. Choice 2-4 950-1200 lbs. 66.50-69.50, bulk 66.50-67.50 after Monday. Mixed good and choice 2-3 950-1150 lbs. 65.00-68.50, late 65.00-66.50. Good 2-3 900-1100 lbs. 64.00-67.50, closing 64.00-65.50. Standard to good 2-3 1000-1400 lb. Holsteins 62.00-65.00.

SLAUGHTER HEIFERS: Mixed choice and prime 2-4 925-950 lbs. 68.50-69.00 on Monday, Choice 2-4 800-1025 lbs. 65.00-68.25, closing 65.00-67.00. Mixed good and choice 2-3 700-900 lbs. 64.00-66.50, late 65.00-66.50. Few good 2-3 700-900 lbs. 62.00-65.00.

COWS: Late utility and commercial 2-4 47.00-50.00. Few boning utility 1-2 50.00-52.00. Cutter 1-2 46.00-50.00. Canner and low cutter 1-2 43.00-46.00.

BULLS: Yield grade 1-2 1000-1900 lbs. 61.00-69.00.

FEEDERS: (Including around 600 at the regular Thursday auction.) Feeder steers and heifers generally 4.00-5.00 lower, but the light supply failed to provide a complete test of prices. Supply mainly choice and mixed good and choice 400-700 lb. steers and 400-500 lb. heifers.

FEEDER STEERS: 400-535 lbs. 80.00-88.25; few lots 625-725 lbs. 74.50-80.00; scattered lots fleshy 800-1000 lbs. 62.25-69.50. Few lots mixed good and choice 400-435 lbs. 80.25-80.50. Lot 560 lb. Holsteins 77.00.

FEEDER HEIFERS: Choice 400-500 lbs. 79.00-86.00; load high choice 601 lbs. 78.00; few lots fleshy 800-850 lbs. 61.00-63.00. Mixed good and choice 400-500 lbs. 78.50-81.50.

STOCK COWS: Few small lots good and choice 800-1060 lbs. 49.75-52.75.

PAIRS: Lot 4 head good 4-6 year old cows with about 150 lb. calves at side 665.00 per pair.

Lancaster Weekly

Fri., June 8, 1979

	Cattle Calves
This Week	5500 1025
Last Week	4777 963
Last Year	6147 1215

CATTLE: All slaughter classes sharply lower; slaughter steers generally 4.00-5.00 lower, instances as much as 7.00 lower on Standard and low Good; slaughter heifers 3.00-4.00 lower; cows closed the week 5.00-6.00 lower; small supply bullocks 5.00-6.00 lower; bulls 6.00-7.00 lower, with some sales yield grade 2 as much as 9.00 off. Supply included 71 per cent slaughter steers, 11 per cent cows, 6 per cent bulls, and 4 per cent heifers.

SLAUGHTER STEERS: High Choice and Prime 3-4 1075-1350 lbs. 67.60-69.75; Choice mainly 2 1050-1350

lbs. 68.75-70.00, few 70.00-70.85; Choice 2-4 1000-1350 lbs. 65.50-69.00; high Good and low Choice 2-3 63.00-66.50; Good 2-3 62.00-65.50; Standard and low Good 1-2 57.00-60.50.

SLAUGHTER HEIFERS: Choice 2-3 900-1075 lbs. 62.50-65.75, few early part of the week 66.00-67.50; Good 2-3 850-1000 lbs. 60.00-64.00.

COWS: Utility and Commercial 1-3 49.00-52.25, few 52.50-54.00; Cutter 1-2 48.00-52.25, few 52.50-54.35; Canner and low Cutter 45.00-48.50.

BULLOCKS: Choice 1000-1050 lbs. 65.00-67.00; Good 1000-1250 lbs. 60.00-64.50.

BULLS: Yield grade 1 1100-1800 lbs. 63.50-67.50, few 67.50-71.50, around 10 head 73.50-77.00; yield grade 2 1000-1350 lbs. 58.00-63.50.

VEAL CALVES: Choice and Prime vealers 5.00-10.00 lower, high Good and low Choice weak to 5.00 lower. Demand good for calves returned to farm.

VEALERS: Prime 240-320 lbs. 112.00-119.00; Choice 140-290 lbs. 96.00-112.00, few 112.00-118.00; high Good and low Choice 140-300 lbs. 94.00-110.00, 90-115 lbs. 75.00-85.00, few 85.00-90.00; 60-80 lbs. 53.00-75.00.

RETURNED TO FARM: Bulk 80-125 lbs. Holstein heifers 170.00-215.00, few 75-95 lbs. 125.00-150.00; bulk 90-120 lbs. Holstein bulls 98.00-135.00, 80 head 100-115 lbs. 141.00-160.00.

Indiana Auction

Homer City, Pa.

June 7, 1979

CATTLE 91. Compared with last Thursday's market, Sl. cows 6.00-7.00 lower. Sl. steers 1 Choice at 65.25; 1 Good at 60.50. Couple Choice sl. heifers 68.00, 68.50. Good 58.00-62.50. Utility & Commercial sl. cows 51.00-57.50, 1 at 60.00. Commercial 4-5 46.00-51.25, Cutters 47.00-51.50; Canner & L. Cutter 42.00-47.00, Shells down to 38.50. Bulls few Yield Grade #1-2, 900-1240 lbs. 60.00-68.00.

FEEDER CATTLE: Few Good & Choice 325-470 lbs. heifers 72.00-82.00. Few Good & Choice 400-620 lbs. bulls 65.00-71.00.

CALVES 88. Vealers mostly 5.00 lower. Choice 100.00-110.00, Good 85.00-97.00; Standard & Good 90-

120 lbs. 78.00-92.00; 65-85 lbs. 63.00-80.00.

FARM CALVES: Hol. Bulls 90-130 lbs. 90.00-111.00, few Hol. Heifers 75-105 lbs. 111.00-139.00. Beef cross bulls & heifers 70-130 lbs. 85.00-110.00.

HOGS 107. Barrows and gilts mostly 2.00 lower. Few US No. 1-2 210-225 lbs. barrows & gilts 41.50-42.75, No. 1-3 200-245 lbs. 40.50-41.50; few No. 2-3 226-265 lbs. 39.50-40.00; No. 1-3 150-190 lbs. 34.00-40.75. SOWS Few US No. 1-3 290-520 lbs. sows 32.75-35.75; few BOARS 32.00-35.00.

FEEDER PIGS 39. US No 1-3 20-30 lbs. feeder pigs 15.00-25.00 per head, few No 1-3 50-80 lbs. 36.00-49.00.

SHEEP 30. Sl. lambs few Choice 90-100 lbs. 70.00-70.50 Slaughter ewes 15.00-31.00.

Joliet Cattle

June 7, 1979

CATTLE: Friday through Wednesday's salable receipts 4,700; 4 days last week 3,870; same period last year 7,386. Trading slow to moderate for the week. Slaughter steers closed the week 3.50-4.50, instances 5.00 lower than Wednesday of last week. Slaughter heifers closed the week 4.00-4.50 lower. Cows closed the week fully 3.00 lower.

SLAUGHTER STEERS: Mixed High Choice and Prime 3-4, few 5, 1150-1300 69.50-70.00, load 70.50 Monday; 67.25-68.00 Wednesday; 4-5 1250-1350 lbs. 69.00-69.50 Monday; 67.00-67.50 Wednesday. Choice 2-4 1050-1300 lbs. 68.50-70.00, 1 load 70.50 Monday; 67.00-68.00; 1 load 2-3 1350 68.50 Wednesday. Mixed Good and Choice 2-3 1000-1250 lbs. 68.00-69.00 Monday; 66.00-67.00 Wednesday.

SLAUGHTER HEIFERS: Mixed Choice and Prime 3-4, few 5, 950-1100 lbs. 69.75, 2 loads and package 70.00 Monday; 67.50, 1 load 68.00 Wednesday. Choice 2-4 900-1050 lbs. 67.50-69.50 Monday; 66.00-67.50 Wednesday. Mixed Good and Choice 2-3 800-1000 lbs. 66.00-67.60 Monday; 65.00-66.00 Wednesday.

COWS: Utility & Commercial 1-3 53.00-55.00 Monday; 50.00-52.00 Wednesday.

Central U.S. Carlot

June 6, 1979

Compared to Tuesday's 4:30 report: Steer beef steady-weak; heifer beef steady-1.00 lower. Trade moderate to active; demand moderate to good with interest continuing for delivery both this week and next week. Attractive cut-out margins in boxing operations prompt movement in spite of some threats of transportation problems. Sales reported on 95 loads of steer and heifer beef.

STEER BEEF
FOB Omaha Basis
Choice 3 600-800 lbs. 99.50, steady-weak.

Choice 3 700-900 lbs. 99.50.
Choice 3 600-700 lbs. 99.75-100.75 slctd.

Choice 2 600-700 lbs. 101.75 slctd.
Choice 4 550-850 lbs. 94.00 slctd.

Choice 4 600-900 lbs. 92.50.
Good 2-3 600-800 lbs. 96.50, steady.

FOB Amarillo Basis
Choice 3 600-900 lbs. 100.50-101.50 late Tuesday packer/packer.

Choice 3 600-800 lbs. 101.00-102.00 packer to packer.
Choice 4 600-800 lbs. 91.00-92.00.

Choice 4 800-900 lbs. 89.50.
HEIFER BEEF
44 Loads

FOB Omaha Basis
Choice 3 500-700 lbs. 98.50-99.50, stdy.-1.00 lwr.

Choice 3 500-700 lbs. 100.00 imm. ship.

Choice 3 400-500 lbs. 97.00 imm. ship.

Choice 4 500-700 lbs. 92.00, steady.

Good 2-3 500-700 lbs. 94.50.
FOB Amarillo Area

Choice 3 500-700 lbs. 99.50 late Tuesday packer to packer.
Choice 3 500-700 lbs. 100.25-100.75 pckr/pckr.
Good 2-3 500-700 lbs. 94.25.
Canner and cutter cow beef 5.00 lower than Monday. Utility cows untested but sharp downward pressure indicated.

COW BEEF
3 Loads

FOB Omaha Basis
Utility (BNG) 1-2 400 & up lbs. 84.00.

Canner & cutter 350 & up lbs. 93.50, 5.00 lwr. than Thursday.

BULL BEEF

1 Load
FOB Omaha Basis
Bull 1 500 & up lbs. 100.50.
PRIMAL BEEF CUTS
Choice 3

12 1/2 Loads
FOB Omaha Basis
FORES 130-210 lbs. 83.25-84.00.

FORES 130-210 lbs. 84.25 selected.

ARM CHUCKS 75-120 lbs. 81.50-82.50.

ROUNDS (S) 65-95 lbs. 108.50-109.50, steady.

BRISKETS 55.50.

BONELESS PROCESSING BEEF/BEEF TRIMMINGS

10 Loads

FOB Omaha Basis

90 pct. chem. lean fresh 134.50-135.50 early.

50 pct. chem. lean fresh 58.00-58.50, 2.50-3.00 lwr.

FOB Amarillo Basis

50 pct. chem. lean frozen 56.50, 1.50 lower.

Compared to Tuesday's 2:15 report: Fresh pork loins steady-1.00 hgr. except 20 & up 4.00 lower. Boston Butts 2.00 lower. Skinned hams weak-3.00 lower. Bellies 1.50-2.00 lower. Trimmings 75-4.50 lower. Other cuts not well established late. Trade slow; demand light except moderate for 14-17 lbs. sales reported on 75 loads, including 18 1/2 loads of trimmings and offal.

FRESH PORK CUTS

LOINS: 14-17 lbs. 92.00-94.00, steady-1.00 hgr.; 20 & up lbs. 63.50, ld. early 66.00, 4.00 lower.

BOSTON BUTTS: 4-8 lbs. 67.50-68.50, 67.50 late, 2.00 lower; 8 & up lbs. 67.50.

SPARERIBS: 3-5 lbs. 84.50-85.00.

SKINNED HAMS: 17-20 lbs. 62.00-62.50, steady; 17-20 lbs. 63.50 export; 20-26 lbs. 58.00-60.50, late 58.00, 2.00 lower; 26-28 lbs. 62.00 export; 28-30 lbs. 56.00 early, 2.50 lower; 26 & up lbs. 50.00, id. early 53.00, 3.00 lower.

BELLIES, SDLs.: 10-12 lbs. 39.50, 1.50 lower; 12-14 lbs. 39.00-40.00, 1.50 lower; 14-16 lbs. 39.00-40.00, 1.50 lower; 16-18 lbs. 38.00, 2.00 lower; 18-20 lbs. 34.50, steady-50 lower.

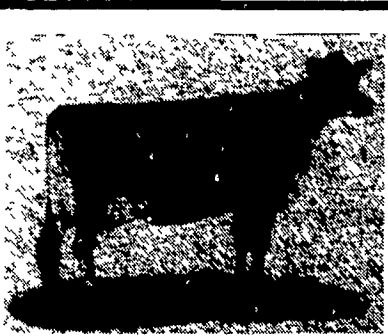
NECK BONES: T.I.S. 15.50, 16.00.

CHEEK MEAT: 88.00.

TAILS: 16.50-17.00.

KIDNEYS: 80 lb. box 27.00 export.

LIVERS: 60 lb. box 20.00 export.



...JERSEYS ARE IN TROUBLE...

there are not enough of them!!

Unprecedented demand for Jersey cattle both here and for export has created a shortage of milk cows, bred heifers and even young calves.

As more and more dairymen discover the efficiency and profitability of Jersey cows, there will be continuing demand for good Jerseys.

With many Pennsylvania Jersey herds topping the 600# herd average for butterfat and many cows producing in excess of \$1000 over feed costs, it is no wonder JERSEYS are in short supply.

Top consignments are now being sought for the PJCC State Sale to be held on Saturday, September 15, 1979, at the Guernsey Barn near Lancaster, Pa.

Jersey herds and groups of cows or bred heifers are also needed.

Contact

PENNSYLVANIA JERSEY CATTLE CLUB

Florence Robinson, Sec., Pine Mt. Farm, 9269 Mentzer Gap Rd., Waynesboro, Pa. 17268 or Dreisbachs' Long Meadows Farm, Box 626, RD 3, Hamburg, Pa. 19526.

SPECIAL NOTICE

VINTAGE SALE STABLES, INC.

12 miles east of Lancaster at Paradise, PA.

Proudly Announces

A BUTCHER HOG AUCTION

Every Monday AT 1:00 P.M.

This will be in addition to our regular Wednesday and Saturday Butcher Hog Auctions.

No waiting to unload.

Will receive hogs anytime Monday morning.

For More Information Call

L. Robert Frame, Manager

717-442-4181

768-8204

BEEFALO HYBRID CATTLE BRED BEEFALO FOR SALE

- Rapid gains on grass and roughage.
- 55-65 lb Births - up to 1100 lb. yearling.
- Visit our farm and see our animals.

In stock **SEMEN \$12** an ampule
1/2 & 3/4 Blood Bulls & Heifers

BEEFALO N & J

4270 Quakerbridge Rd.
Princeton, NJ 08540 609-896-0336
Member World Beefalo Association

HARVEY Z. MARTIN HAY AND STRAW SALE

WILL BE DISCONTINUED UNTIL FURTHER NOTICE.

HOWEVER, WE WILL STILL BUY HAY & STRAW PRIVATELY AND ON ORDERS.

For More Information

Phone: 215-445-5303