

# Don Brubaker's future is in farming

By KENDACE BORRY STRASBURG — Being named president of the Lancaster County FFA is just another step to the fulfillment of Don Brubaker's dreams and goals.

The 17-year-old junior at Lampeter Strasburg High School has been a member of the Garden Spot FFA since ninth grade. And he stated that it was a hard decision to make to decide to enter FFA, but once he made up his mind that farming was the only occupation that would really make him

happy, he threw himself wholeheartedly into the project, and has been busy ever since.

Living with his parents, Mr. and Mrs. Harold Brubaker, and four brothers and sisters on a 65 acre hog and chicken operation, he noted that it is "quality and not quantity, that counts, on a farm."

Don told that his responsibilities on the place range from "anything and everything that needs to be done at the moment" including doing the trimming and maintaining of the

family's tourists cabins, watching over and cleaning the chicken houses, and caring for the hogs that are completely his own project.

Constantly reaching to improve and enlarge his hog operation, he has built his own farrowing house, which includes two farrowing crates and a weaning pen. He also constructed a finishing pen for 70 feeder pigs.

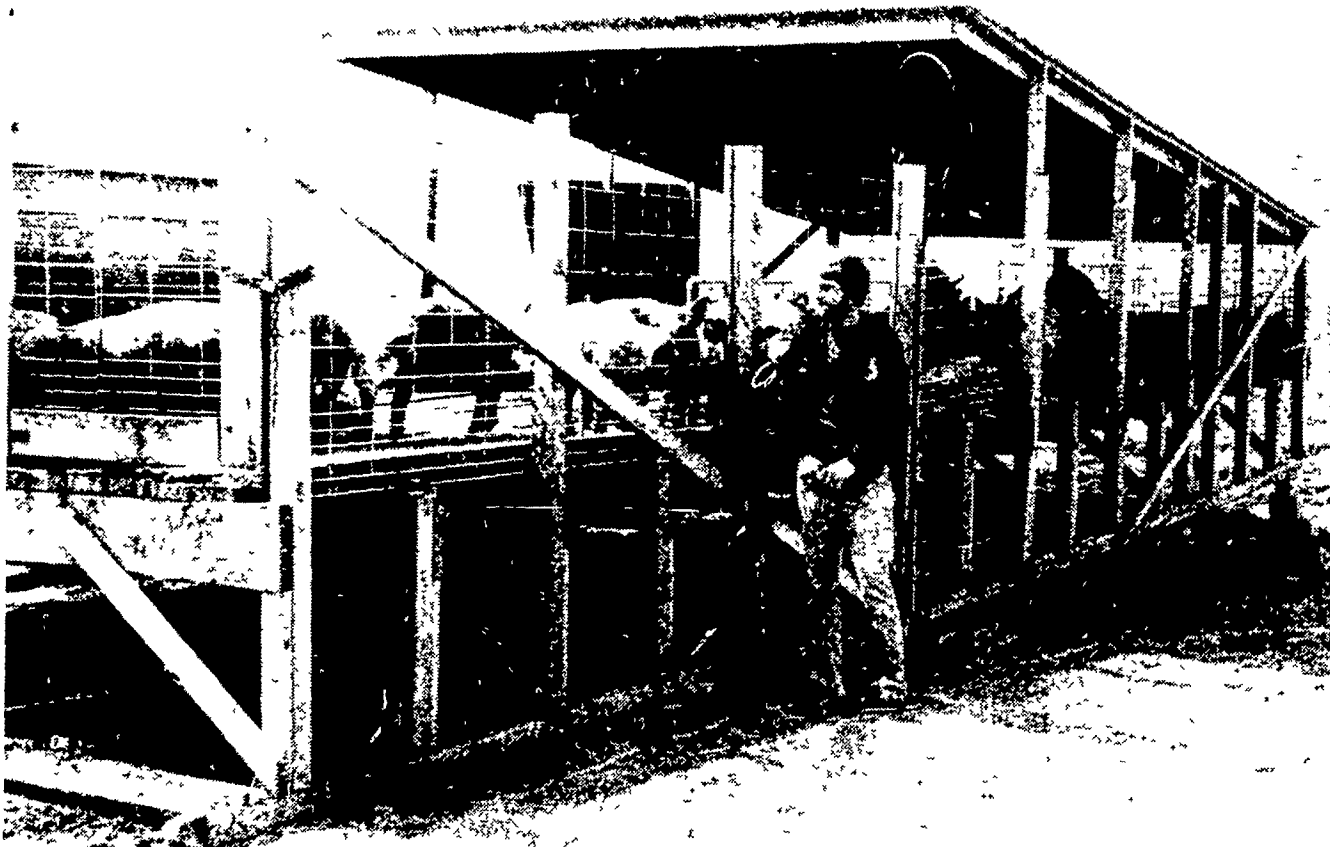
Future plans include a feedlot for his sows, and modifying part of the barn so that it is environmentally

controlled for the feeder pigs.

He also owns his own feed grinder and noted that he has a service man from the company that he contracts his hogs to, come out every two weeks to check all of the animals.

He has been active in his FFA chapter, holding the offices of assistant vice president, vice president, and student advisor. He served as a county FFA delegate for three years before winning over three

(Turn to Page 51)



Standing at the hog finishing pen that he and his father built, Don Brubaker, president of the Lancaster County FFA, surveys his young pigs.

**HENRY K. FISHER, INC.**  
 SAND BLASTING & SPRAY PAINTING  
 AERIAL LADDER EQUIPMENT  
 SPECIALIZE IN FARM BUILDINGS.  
 (Farm buildings ask for Amos Fisher)  
 667 Hartman Station Rd.  
 Lancaster, PA 17601  
 717-393-6530

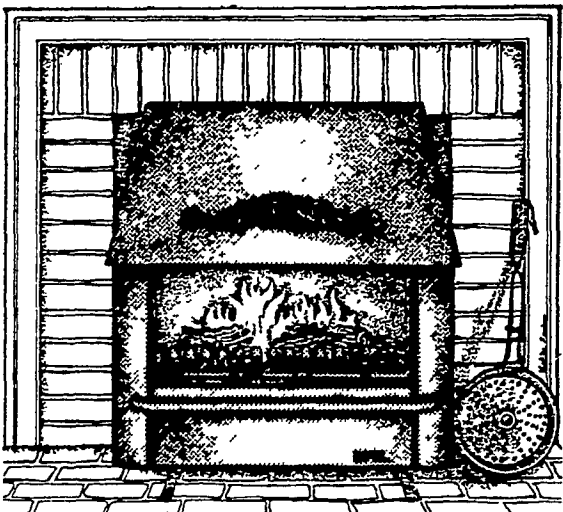
**LIGHTNING IS STRIKING!**  
 Are Your Buildings Safe?  
**LIGHTNING RODS**  
 Now Available

Let Us Estimate The Cost Of Protecting Your Buildings. No Obligation . . .

**DAVID'S ELECTRIC SERVICE**  
 400 N. Race St  
 Richland, PA 17087  
 717-866-7588 (Call)  
 717-272-8580 Collect

**HAROLD C. FOSTER**  
 Box 96A  
 Star Route  
 Huntingdon, PA 16652  
 814-643-0248  
 (Call Collect)

**SAVE UP TO 75% ON HEATING BILLS**



**THERE ARE TWO WOOD STOVES IN THIS PICTURE**

The one you see is an open stove, with all the beauty of the open fireplace. The one you don't see is an air-tight stove that heats up to 7,000 cu ft for 8 hours when you close sealed glass front.

The Efel is designed to be used either free standing or vented into an existing fireplace. Either way you get two stoves in one.



**WOOD HEAT**

Rt. 212, Pleasant Valley, Quakertown, Pa.  
 (215) 346-7894

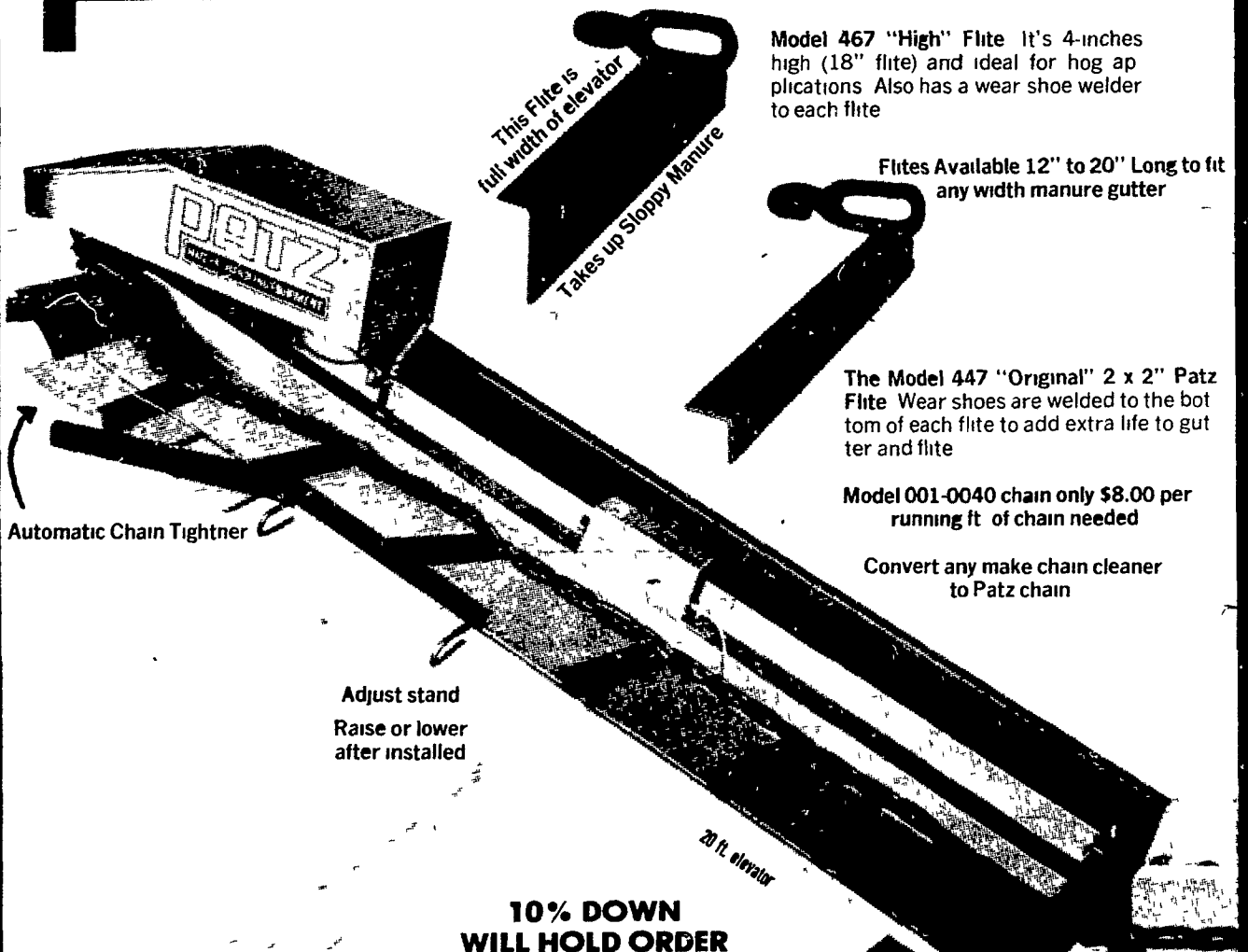
Open: Mon. & Fri. 8-8; Tues. & Thurs 8-5.  
 Sat. 9-5; Closed Wed. & Sun.



90 DAYS NO FINANCING CHG  
 FINANCING UP TO 30 MONTHS



## PATZ BARN CLEANER



Model 467 "High" Flite It's 4-inches high (18" flite) and ideal for hog applications. Also has a wear shoe welder to each flite.

Flites Available 12" to 20" Long to fit any width manure gutter

The Model 447 "Original" 2 x 2" Patz Flite Wear shoes are welded to the bottom of each flite to add extra life to gutter and flite.

Model 001-0040 chain only \$8.00 per running ft. of chain needed

Convert any make chain cleaner to Patz chain

**10% DOWN WILL HOLD ORDER**

Pay when installed or within 6 months after shipment.

Also sold on Patz Lease Plan, 2 years to pay

**MARVIN J. HORST**

DAIRY EQUIPMENT

1950 So. 5th Ave. (Iona) Lebanon, PA 17042

PH: 717-272-0871