



There are said to be 2 million comets in the solar system. The most famous, Halley's Comet, will next be seen by earthlings in 1986!

# SIMPLIFIED MILKING SYSTEMS



SAVE 25% ON NEW PIPELINE

SAVE 70% ON SERVICE AND MAINTENANCE COSTS

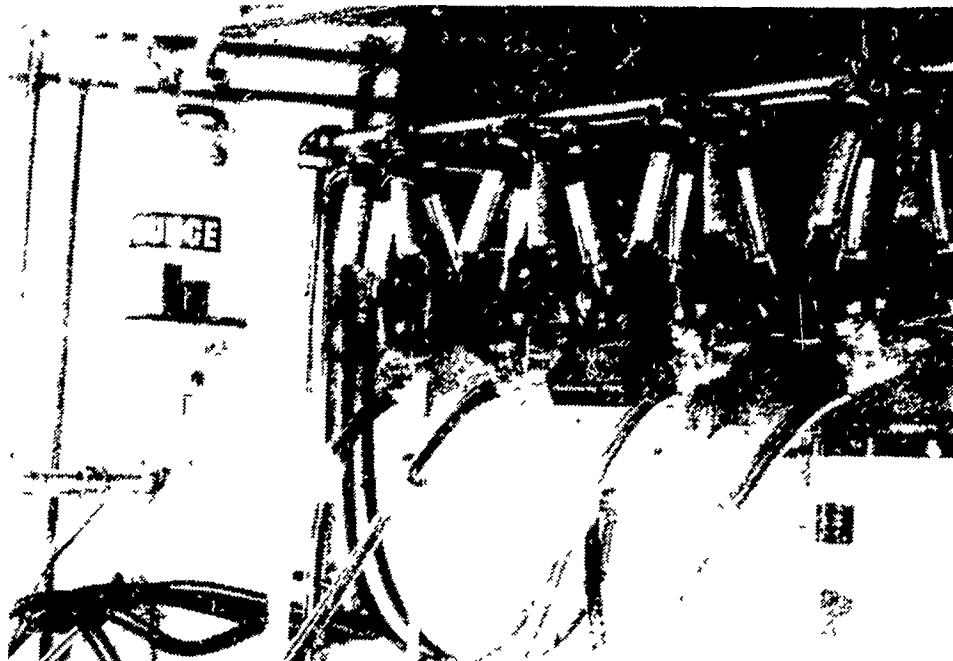
PRESENTS

## BODMIN NU-PULSE

THE NO NONSENSE SINGLE HOSE MILKING MACHINE

THE MILKER THAT ADAPTS TO ALL SYSTEMS  
NEW AND EXISTING PIPELINE, PARLOR OR PAIL

Why not have the advantages of a Simplified Milking machine and the benefits of reduced operating costs. Bodmin Nu-Pulse has proven itself to be an aid in improved udder health and increased production. There are several hundred units in operation in Pennsylvania at this time. Contact us for the name of a user in your area.



### ATTENTION DAIRYMEN REMODELING OR BUILDING NEW BARN:

We have made several installations of pipelines with the milk line in the manger curb. This is an exciting new concept of getting lowline milking advantages in stall barns.

The concepts of Simplified Milking Systems are not conventional, but designed to remove some of the mystery of what is required to make a profitable milking system. We don't fit everybody's plans but if you would like to see an approach that is not "ME TOO", give us a call.

### JUNE SPECIAL

NEW 2" STAINLESS STEEL PIPELINE INSTALLED WITH COMPLETE AUTOMATIC WASHER IN 60 COW STALL BARN USING 4 BODMAN NU-PULSE UNITS \$7200<sup>00\*</sup> SHORTER STABLES AT A LOWER COST

\* PLUS VACUUM PUMP IF NEEDED. INSTALLATION INCLUDED.

## SIMPLIFIED MILKING SYSTEMS

Nottingham, PA 19362  
Doug Johnson Home Phone 301-398-2948  
John S. Lapp, Warehouse Mgr Intercourse, PA 717-768-3030

## TRW supports NTPA

UPPER SANDUSKY, Ohio - The TRW Replacement Division of TRW Inc., Cleveland, Ohio will be supporting pullers on the National Tractor Pullers Association's (NTPA) Grand National Circuit using TRW pistons, piston rings and/or engine bearings, and sponsorship of an electronic scoreboard at most NTPA sanctioned events.

The TRW Contingency Program will cover all NTPA competition divisions - super stock, modified, mini tractors and four wheel drive trucks.

Additionally, TRW will supply the top three pullers in each Grand National Circuit class with merchandise certificates, in addition to supplying the winner of the "Truck Puller of the Year" with a TRW floor model tool chest.

A major part of the TRW program will be sponsorship of a scoreboard which will keep pulling fans posted

regarding the progress of the major NTPA events. The scoreboard will be portable, set on a trailer frame and be completely self-contained, including a generator to drive the electronic equipment. The scoreboard will debut in early June.

TRW has had a long, successful history of supplying high quality parts for a variety of motorsports, and the TRW pulling program is to promote the company name in the agricultural sector, a major TRW Replacement Division market.

## Pest management information available

NEWARK, Del. -- Delaware farmers interested in receiving information that will help them control insect and disease problems on their crops over the present growing season can receive regular mailings of the 1979 "Integrated Pest Management Report."

This weekly report is published jointly by Extension specialists at the

University of Delaware and the University of Maryland.

Among other things it includes the latest information from research on optimum timing of pesticide applications, alternative control techniques, and the levels of infestation different field crops can sustain before suffering a reduction in yield.

Alerts are also issued whenever outbreaks of a particular pest occur or are expected to occur.

The Integrated Pest Management Report is available free to anyone who requests it. It is funded by contributions from recipients. To be placed on the mailing list, contact county Extension offices in Newark, Dover or Georgetown, Delaware or contact Mark Graustein, Pest Management Specialist, University of Delaware, Newark, Del. 19711.

## NEED A BARN? We Will Build It This Summer

### WE HANDLE THE COMPLETE SYSTEM

- Building
- Dairy Equipment
- Tanks
- Pipeline
- Vacuum Pumps
- Etc.

Call Us For A Price

## J. M. HORST SERVICE CO.

Box 231, Quentin, PA 17724-1242  
★ 24 Hour Service



## COMING JUNE 9

### Lancaster Farming's Special Annual

# DAIRY ISSUE



## FEATURING

- Special dairy stories and features
- Local Dairy Association news
- Latest information for the dairy farmer

### ADVERTISERS...

Get Complete Coverage by Reserving Your Space Now In This Special Issue.

Deadline for Ads — June 4  
Phone Area Code 717-394-3047  
or 626-1164

