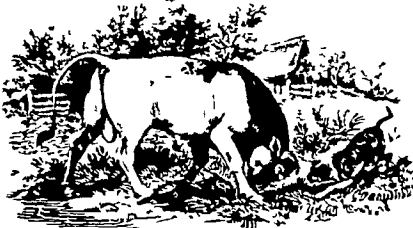




MAY 28-JUNE 3, 1979

Sun is bright, new flies bite

Snow tires should be stored by now Duke of Windsor married Wallie June 3, 1937 First quarter of the moon June 2 Average length of days for the week, 15 hours, 4 minutes Northern turtles lay eggs now Yankee Doodle first sung June 1 1755 One joy scatters a hundred griefs



right because a man driving an ox-team walked on the left side of his cattle because he didn't want to get shoved in the bush off the roadside.

Home Hints Don't throw away an old steel pail that leaks. Nail it to the garage or chicken wall and use it to hold small tools.

OLD FARMER'S WEATHER FORECASTS

New England: Week begins clear and cool, then cloudier and very warm, some showers last of week.

Greater New York-New Jersey Sunny and seasonal to start, warm with showers last of week.

Middle Atlantic Coastal. Clear and cool, then sunny and hot light rain at week's end.

Piedmont & Southeast Coastal Clear hot and very dry all week, cooler with some showers for weekend.

(All Rights Reserved Yankee Inc. Dublin N.H. 03444)

Belleville Auction

Belleville, Pa.
May 23, 1979

CATTLE 117. Compared with last Wednesday's market, slaughter cows 50 cents-\$2 higher. Few Standard slaughter steers 64.35-68.85 Few Standard slaughter heifers 67.85-68.85 Utility and Commercial slaughter cows 57.50-61.10, one at 63.85, Cutters 57.00-59.60, Canner and Low Cutters 53.00-55.50, Shells down to 51.00. Yield Grade No 1, 1100-2060 lbs slaughter bulls 65.00-74.50 Few Medium and Good 350-600 lbs. feeder steers 80.00-90.50. One lot Good 400 lbs feeder heifers at 90.50.

CALVES 148. Choice vealers 120.00-129.50, few Good 104.00-110.00, Standard and Good (few) 90-110 lbs 99.00-105.00. Farm Calves: Holstein bulls 90-120 lbs 110.00-155.00, few to 161.00; few Holstein heifers 100-140 lbs. 105.00-205.00.

Ask the Old Farmer How did our American "keep to the right" traffic ruling start? Most of our laws came from England but they still drive on the left GP Springfield Ill

Don't know about the English but we kept to the right

right because a man driving an ox-team walked on the left side of his cattle because he didn't want to get shoved in the bush off the roadside.

Home Hints Don't throw away an old steel pail that leaks. Nail it to the garage or chicken wall and use it to hold small tools.

OLD FARMER'S WEATHER FORECASTS

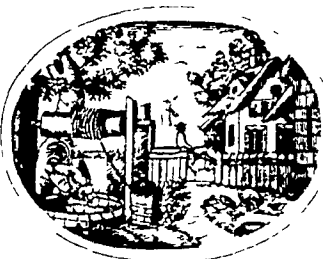
New England: Week begins clear and cool, then cloudier and very warm, some showers last of week.

Greater New York-New Jersey Sunny and seasonal to start, warm with showers last of week.

Middle Atlantic Coastal. Clear and cool, then sunny and hot light rain at week's end.

Piedmont & Southeast Coastal Clear hot and very dry all week, cooler with some showers for weekend.

(All Rights Reserved Yankee Inc. Dublin N.H. 03444)



SPECIAL NOTICE

VINTAGE SALE STABLES, INC.

12 miles east of Lancaster at Paradise, PA.
Proudly Announces

A BUTCHER HOG AUCTION Every Monday AT 1:00 P.M.

NOTICE
MEMORIAL DAY HOG SALE
CANCELLED

Mon., June 4 Hog Sale As Usual.

This will be in addition to our regular Wednesday and Saturday Butcher Hog Auctions.

No waiting to unload.

Will receive hogs anytime Monday morning.

For More Information Call

L. Robert Frame, Manager

717-442-4181

768-8204

Livestock market and auction news

Omaha Cattle

May 24, 1979

CATTLE - Slaughter steers through midweek were 75 to 100 higher and heifers 100 to 150 higher. Cows were mostly 200 higher than late last week, bulls steady.

Four day receipts 13,050 compared 12,350 last week and 19,075 a year ago.

Demand improved following last week's severe price downturns and much of the recovery occurred Tuesday when the dressed trade moved upward. Slaughter steers made up around 57 pct. of the week's total supply with a fairly liberal number choice Heifers made up only 28 pct., cows 9 pct. and feeders, included Friday's auction 5 pct.

STEERS Tuesday, two loads choice and prime 3-4 1269 lbs 74.50. At midweek, four loads and part load choice with end prime 3-4 1200-1275 lbs 74.00. Choice 2-4 1025-1300 lbs 72.50-73.75, some at 73.75 with end of prime. Mixed good and choice 2-3 1000-1250 lbs. 71.50-72.50, load good and choice holsteins 1366 lbs 69.00.

Good 2-3 67.50-71.50, two loads 1200-1250 lb. holsteins included 67.50.

Average of 1s-214, detailed quotations for choice 900-1100 lb. steers this week 72.80; choice 1100-1300 lbs 72.98. Average weight steers this week 1183 lbs. as compared 1167 lbs. the previous week. Average weight heifers this week 995 lbs. as compared 978 lbs. the previous week.

HEIFERS: At midweek, two loads choice, end of prime 1009-1061 lbs 73.25

Choice 2 1070-1090 lbs 71.50-73.00 Mixed good and choice 2-3 875-1025 lbs 70.00-71.00, good 65.00-69.50

COWS Late sales utility and commercial 2-4 54.50-56.50, some high dressing 57.00-57.50 Cutter 51.50-54.50, canner and low-cutter 50.00-52.00

BULLS 1-2 1400-2000 lbs 64.00-70.00, individual 1 71.00-72.00

Select No 1 and 2, 190-215 lbs 45.00

Private Treaty Fat Hogs, No 1 and 2, 190-220 lbs 44.25-44.50

Private Treaty Fat Hogs, No 1 and 3, 230-260 lbs 43.00-44.00

Belknap Auction

Dayton, Pa.
May 23, 1979

CATTLE 74. Compared with last Wednesday's market, slaughter cows \$1-\$1.50 higher. Couple Choice slaughter steers 68.25 and 69.25, few Good 66.50-69.00, few Standard 64.50-67.25 Couple Good slaughter heifers 63.50 and 67.50, few Standard 60.00-63.75 Utility and Commercial slaughter cows 58.50-64.50, few to 67.00, Cutters 54.00-58.00, few Canner and Low Cutters 49.00-55.00, Shells down to 43.75 Few Yield Grade No. 1-2 1000-1075 lbs. slaughter bulls 65.00-68.75. Few Good and Choice 300-675 lbs. feeder bulls 71.00-100.00.

CALVES 79. Vealers grading Good and Choice about steady, Standard \$3-\$5 higher Choice vealers 110.00-115.00, few Good 94.00-108.00, Standard & Good 90-100 lbs. 94-104, few 65-85 lbs 80.00-97.00, utility 55-115 lbs 57.00-78.00. Farm Calves. Holstein bulls 90-130 lbs 107.00-127.00; few Holstein heifers 70-120 lbs 103.00-140.00; Beef cross bulls and heifers 70-120 lbs 103.00-140.00

HOGS 397 Barrows and gilts \$1.50 lower. US No 1-2 215-240 lbs barrows and gilts 46.00-47.00, one lot at 47.40, No. 1-3 200-240 lbs. 45.00-46.30, No. 2-3 200-290 lbs. 42.00-44.60, few 300-375 lbs 36.00-40.00, No 1-3 150-190 lbs. 40.00-42.75 Sows \$2 higher US No 1-3 300-600

lbs. sows 40.75-43.75. Few Boars 32.00-34.50, few Stock Boars 34.50-42.00.

FEEDER PIGS 160. US No. 1-3 25-35 lbs feeder pigs 27.00-40.00 per head, No. 1-3 35-50 lbs 37.00-44.00, Utility 25-30 lbs. 26.00-28.00 per head.

SHEEP 26. One lot Choice 102 lbs. spring slaughter lambs at 65.00, lot Good 70 lbs at 73.50 Short slaughter ewes 31.00-37.00

Peoria Cattle

May 24, 1979

CATTLE: Receipts This Week. 3100, Last Week 3100, Year Ago 3800.

Compared with last week's close, slaughter steers 1.50-2.50 higher. Slaughter heifers 2.00-3.50 higher. Cows firm to 1.00 higher. Bulls steady. Receipts about 70 percent slaughter steers, 25 percent slaughter heifers, balance mainly cows.

SLAUGHTER STEERS: Couple loads Choice and Prime 3-4 1160-1190 lbs. 74.50-75.00; three loads 1195-1300 lbs. yield grade 4-5 72.00-73.00; Choice 2-4 950-1300 lbs. 73.50-74.50; three loads 74.75-75.00; mixed Good and Choice 2-4 900-1275 lbs. 72.00-73.50; Good 2-3 68.00-72.00.

SLAUGHTER HEIFERS. Load Choice and Prime 3-4 900-1000 lbs. 73.50-74.00; Choice 2-4 850-1100 lbs. 71.50-73.00; mostly 71.50-72.50; mixed Good and Choice 2-4 800-1080 lbs 67.00-71.50; Good 2-3 64.00-67.00

COWS Utility and Commercial 1-3 56.00-58.00, high-dressing Utility 59.00, few 60.00-61.00; Cutter 1-2 55.00-57.00, Canner 50.50-55.00

BULLS Yield Grade 1-2 1100-1800 lbs. 62.00-69.00; couple yield grade 1 70.00-71.00

HARVEY Z. MARTIN HAY AND STRAW SALE

WILL BE DISCONTINUED UNTIL FURTHER NOTICE.

HOWEVER, WE WILL STILL BUY HAY & STRAW PRIVATELY AND ON ORDERS.

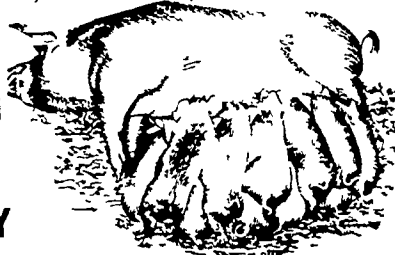
For More Information

Phone: 215-445-5303

NEW HOLLAND SALES STABLES, Inc.

12 Miles East of Lancaster
on Route 23, New Holland, Penna.

WEEKLY
FEEDER PIG
SALE
EVERY
WEDNESDAY



Sale to Start Promptly at 1 P.M.

We Will Receive Your Pigs Anytime
From 7 A.M. Wed. Morning

NOTICE

To Be Sold Wednesday, May 30
10 to 15 Bred Gilts
consigned by Ed Ranck

State Graded Until 12 Noon.

All pigs inspected by State Approved Veterinarian.
State tags available at our office for you to
tag pigs at home to save 25 cents tagging charge.
Tags delivered if you call 717-354-4341
our office in advance.

Calf Sale To Be Held In New Sales Pavilion
Every Thursday At 4 30 P M

NORMAN KOLB ABE DIFFENBACH
717-397-5538 717-393-4464

BEEFALO HYBRID CATTLE BRED BEEFALO FOR SALE

Rapid gains on grass and roughage
55-65 lb Births - up to 1100 lb yearling
Visit our farm and see our animals

In stock **SEMEN '12** an ampule
1/2 & 3/4 Blood Bulls & Heifers

BEEFALO N & J

4270 Quakerbridge Rd
Princeton, NJ 08540 609-896-0336
Member World Beefalo Association



Be Wise...
Check our
prices before
you buy!!

SPRAY MATERIALS

INSECTICIDES

IM-PRUV-ALL

MEDINA

MELVIN R. WEAVER

2213 Leabrook Road, Lancaster, PA 17601
Ph 717-898-8354 or 569-6576