

# Livestock market and auction news

## Middleburg Auction

Middleburg, Pa.  
May 22, 1979

**CATTLE** 197. Compared with last Tuesday's market, slaughter steers steady to 75 cents higher. Slaughter cows mostly 50 cents to \$1 lower. High Choice & Prime slaughter steers 74.00-76.50, Choice No. 2-4 1000-1450 lbs. 71.00-73.85, few Good 69.00-70.50, few Standard 66.50-68.50. Few Choice slaughter heifers 68.35-72.75, few Good 67.00-69.00. Utility & Commercial slaughter cows 57.50-63.00, couple to 65.00, Cutters 56.50-59.50, few Canner & Low Cutter 53.00-55.50, Shells down to 49.60. Few Utility slaughter bullocks 63.00-66.50. Yield Grade #1 1000-1970 lbs. slaughter bulls 67.00-74.50, one at 76.50. Few Good 400-700 lbs. feeder steers & bulls 68.00-84.00.

**CALVES** 121. One Prime vealer at 132.00, Choice 115.00-126.00, few Good 109.00-119.00, Standard & Good (few) 90-110 lbs. 100.00-107.00, few 70-85 lbs. 98.00-100.00. Farm calves, holstein bulls 90-125 lbs. 110.00-160.00, one at 167.50; holstein heifers 90-140 lbs. 125.00-220.00.

**HOGS** 614. (Monday, May 21, 1979) (51 head for Tuesday, May 22, 1979). US No. 1-2 200-225 lbs. barrows & gilts 44.85-45.60, No. 1-3 190-250 lbs. 44.00-44.85, No. 2-3 200-270 lbs. 43.25-44.00. US No. 1-3 300-550 lbs sows 35.00-38.00. Few Boars 33.00-33.50.

**FEEDER PIGS** 218. US No. 1-3 20-35 lbs. feeder pigs 28.00-38.00 per head, No. 1-3 40-60 lbs. 39.00-49.00, one lot No. 1-3 125 lbs. 55.50 per head.

**SHEEP** 10. Choice 50-90 lbs. spring slaughter lambs 70.00-75.00.

## Lebanon Valley Auction

Fredericksburg, Pa.  
May 22, 1979

**CATTLE** 180 Compared with last Tuesday's market; few High Choice & Prime No. 3-4 slaughter steers 72.25-74.85, Choice No. 2-4 1000-1305 lbs. 72.00-74.50, few Good 68.00-71.75, few Good & Choice holsteins 67.60-69.75, few Standard 65.25-67.75. One Choice slaughter heifer at 69.50, few Good 65.10-69.00, few Standard 59.85-64.25 Utility & Commercial slaughter cows 59.75-61.50, few 64.85, Cutters 55.00-59.85, Canner & Low Cutter 51.75-55.75, few Shells down to 49.00. Few Choice slaughter bullocks 71.00-72.00, few Good 69.00-71.50. Two Yield Grade #1 1160 and 1440 lbs. slaughter bulls 65.10 and 68.85.

**CALVES** 185 One Prime vealer at 131.00, few Good &

Choice 108.00-131.00, Standard & Good 90-120 lbs. 95.00-106.00, 70-90 lbs. 90.00-101.00, few Utility 50-100 lbs. 50.00-87.00. Farm calves active, holstein bulls 90-120 lbs. 114.00-157.00; holstein heifers 80-190 lbs. 131.00-229.00.

**HOGS** 370 US No. 1-2 200-235 lbs. barrows & gilts 45.75-46.35, lot 47.25, No. 1-3 200-245 lbs. 45.00-46.00, No. 2-3 190-260 lbs. 44.00-45.10. US No. 1-3 375-565 lbs. sows 39.00-42.10, few No. 2-3 265-535 lbs. 35.75-39.85. Few Boars 35.50-38.50.

**FEEDER PIGS** 8. Los US No. 1-3 38 lbs. feeder pigs 97.50 cwt., lot No. 1-3 70 lbs. 84.00 cwt.

**SHEEP** 5. Few Choice 95-100 lbs. spring slaughter lambs 80.00-81.00. One Slaughter ewe at 37.50; 1 Yearling at 48.00.

## East Coast Carlot

May 23, 1979

Compared to Tuesday's close: Prime special fed veal weak in very limited test. Good and Choice boning veal firm. Spring lamb 55 lbs. down mostly 2.00-3.00 higher. Old crop 55 lbs. down 5.00 lower, mixed old crop and spring 55-75 lbs. mostly 5.00 lower compared to last week's bulk. Cured and processed meats steady to weak.

### VEAL CARCASS - HIDE ON

Prime (Special Fed). 180-240 lbs., few 190.00.

### BONING TYPE - HIDE ON

Good and Choice

Northeastern Suppliers: 65-75 lbs. 152.00-154.00, few 150.00, all firm; 55-64 lbs. 150.00-152.00, few 148.00; 45-54 lbs. 148.00-150.00, few 146.00; 35-44 lbs. 146.00-148.00, few 144.00; 34 lbs. down 144.00-146.00, few 142.00.

Inshipped 70-80 lbs. ltd. 160.00, all firm; 60-70 lbs. ltd.

158.00, 50-60 lbs. ltd. 156.00-40-50 lbs. ltd. 154.00, 30-40 lbs. ltd. 152.00.

Inshipped, Canadian Product -90 lbs up 164.00, 80-90 lbs 163.00, 70-80 lbs 161.00; 60-70 lbs 159.00; 50-60 lbs 157.00.

### LAMB CARCASS, Choice and Prime 3-4 11 Loads

Compared to last week. 55 lbs. down 135.00, 5.00 lower; 55-65 lbs. 130.00, 5.00 lower; 65-75 lbs. 125.00, 5.00 lower.

### SPRING LAMB CARCASS

Choice and Prime 3-4 55 lbs. down 137.00-140.00, mostly 2.00-4.00 higher; 55-60 lbs. part load 140.00; 55-65 lbs. 130.00, few 132.00; 65-75 lbs. 125.00, few 127.00.

### BEEF TRIMMINGS

2 Loads 60 pct chem lean, fresh 88.75.

### CURED AND PROCESSED MEATS 7 Loads

Skinned hams 16-19 lbs. 75.00, weak; semi bnl. hams 14-17 lbs. 97.00, weak; boneless hams 13-17 lbs. 123.00, steady; no. 1 sliced bacon vacuum pack 96.00, franks 70 beef, 30 pork 1 lb pack 95.00, steady; bologna 70 beef, 30 pork 1 lb pack 98.00, steady.

## New Holland Horses

Monday, May 21  
New Holland Sales Stables

Reported receipts of 430 head of horses, mules, and ponies. Market steady with last week's market.

Local driving horses 325-500; riding horses 300-825; better horses 550-975; lightweight killers 300-475; heavyweight killers 500-700; mare ponies 20-65; colts 10-20; geldings 20-60; larger ponies 100-250.

## Four States Livestock

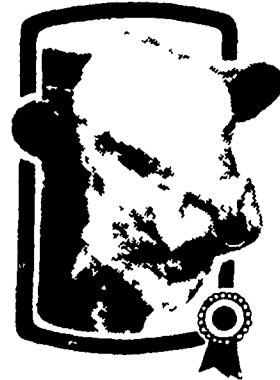
Four States Livestock Sales, Inc.  
Wed., May 16, 1979

**SLAUGHTER** Fed Steers & Heifers \$2.00 lower Choice 68.00-69.00; Good 65.00-67.00, Medium 64.00 Down Heifers Choice 64.00-65.75; Good 62.00-63.00; Medium 61.00 Down. Cows steady to \$1.50 lower. High Yield 60.00-64.25; Average 56.00-59.00; Big Middle 51.00-55.00; Shelly 53.00 down Fat Bulls very active, steady prices. Good 72.00-78.50; Medium 66.00-71.00. Veal Calves steady to higher prices. Choice 120.00-148.00; Good 105.00-119.00; Medium 90-104.00; Farm Hfrs. to \$211.00; Farm Bulls to 154.00; Light & Weak \$92.00 Down. Lambs Choice 74.00-78.50; Good to 73.00.

**STOCKER**: Steers 300-550 lbs. Light run higher prices. Choice 100.00-109.00; Good 91.00-99.00; Medium 82.00-90.00; Culls 81.00 Down. Steers 600-850 lbs. Choice 87.00-96.00; Good 76.00-86.00; Medium 75.00 Down. Heifers (All Weights) Choice 81.00-84.00; Good 74.00-80.00; Medium 73.00 Down. Dairy Cows to 770.00. Bulls Good 82.00-86.00; Medium 81.00

Down. Springing Hfrs. to \$975.00. Pigs, Hd. \$2.00 lower. 20-30 lbs. 27.00-35.00; 40-60 lbs. 36.00-44.00. Shoats by lb. to \$52.00. Slaughter

Hogs 1.00 lower. 200-230 lbs. 44.50-45.50; 240-260 lbs. 44.00-45.25; 180-195 lbs. 40.50-43.50. Sows 300-600 lbs. 35.00-40.00; Thin Sows 32.00-35.00.



## ANNUAL FAT STEER SHOW & SALE

At The Lancaster Stockyards

**WEDNESDAY, JUNE 6, 1979**

Judging at 8:30 a.m.

Sale at 12 Noon

Robert Heilbron, Chairman

- Judged and Sold in Lots of 10 Head
- 4 Classes: Black & Bl. w/f, Hereford & w/f, Charolais & Charolais X Breeds, and Holstein
- 2 Weight Divisions, except Holstein
- All Cattle Feeders Eligible
- One Entry per Class and Weight Division
- Entries Must Be Registered with a Commission Firm
- Ribbons Awarded to Sellers and Buyers
- Trophies to Grand Champion and Reserve Champion

**LANCASTER STOCKYARDS, INC.**

(717) 394-2611

## OPEN HERDBOOK

## ATTENTION GRADE DAIRYMEN

The Red & White Dairy Cattle Association accepts grade Red & Whites, Black & Whites and Colored cattle in our grade-up program. This is a complete program including permanent identification, classification and breed promotion. Over 700 members and 17,500 head registered.

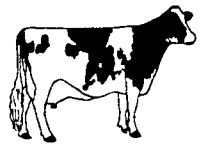
Free information on request - Write Or Call Today



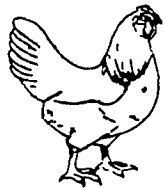
"BRIGHTEN YOUR FUTURE"

Red & White Dairy Cattle Association

Box 63L, Crystal Spring, PA 15536  
Phone 814-735-4221



2-7FC



**WANTED 250,000 FOWL PER WEEK**  
**DEALER IN ALL KINDS OF POULTRY**  
**WE BUY THE WAY YOU WANT TO SELL**  
**HIGHEST FOWL PRICES OFFERED**



## LEGHORN HENS

Pullet Hauling Service  
Pullet

Truck Capacities:

620 coups. . . . . 11,160 birds  
508 coups. . . . . 9,144 birds  
252 coups. . . . . 4,536 birds  
216 coups. . . . . 3,888 birds  
180 coups. . . . . 3,240 birds  
128 coups. . . . . 2,304 birds  
40 coups . . . . . 720 birds



— PARTIAL SECHLER FLEET —

Our Demand is Increasing for more Medium and Heavy Fowl

— Also —  
Any amount of 4 to 5 lb. Broilers

**SERVICE & SATISFACTION GUARANTEED**

Let professionals handle both your fowl and pullet service and get a real good deal on both

CALL EARLY FOR YOUR CHOICE OF SCHEDULING

# SECHLER'S POULTRY

BOX 55, STRAUSSTOWN, PA. 19559

PHONE: 215-488-1188 — COVERING THE U.S. & CANADA

## FARMS FOR SALE

Kent County,  
Maryland  
Low Taxes - Write  
**COOPER-BARROLL REALTY, INC.**

Galena, MD 21635  
Or Call "Jim Davis"  
301-648-5593