

Hoover's

(Continued from Page 16)

negligence and bad management on the part of the livestock farmers.

Hoover, for one, says he would be glad to accept fault if it can be proven. On the other

hand, he does not want to be accused of using Three Mile Island as an excuse for his own mistakes, if that's not the case. He would like to know the truth, he emphasized



Irwin Engle has had 10 calves born since the Three Mile Island incident, and all are healthy. He expects 45 animals to freshen within the next 90 days and says all of his pregnant cows and heifers look as healthy as ever. Engle's farm is located about 6½ miles southeast of Three Mile Island's nuclear reactors.

in an interview Thursday afternoon. Earlier that day he and his family and hired help had blood samples taken to determine if anything unusual might be found in their blood

Some farmers, county agents, and educators have taken positive steps to indicate that the area's farmland, livestock, and farm products are as good as ever. That was the conclusion of a meeting held at York College Thursday night, for example.

One of the many farmers who is confident that all is well is Irwin Engle, who lives about two miles south of Hoover. Engle invited the news media to his farm this week to show them that the livestock is perfectly normal and healthy. He says that's the case on most all farms.

Recalling a situation on his own farm of about two years ago when 16 heifers died, Engle said: "I had all kinds of ideas as to what killed them, but it was my own

management that did it." He explained he had brought grain to 50 heifers on pasture, called them, and left. As it turned out, only about 20 heifers showed up to eat the grain. They overate and it killed them, Engle said matter-of-factly. "I should have stayed to make sure all 50 heifers showed up for the grain," he commented.

Engle has 120 cows and 70 heifers at his 150-acre dairy farm between Bainbridge and Maytown. Asked if he is concerned about Three Mile Island, he says: "Yes and No."

"Until I see some effects I'm going to continue to operate as I have been," Engle said confidently.

Hoover hasn't changed his management either. And although he says he is not against nuclear energy, he says he is upset about the conditions under which the TMI reactors were operated. As a result, he is opposed to their opening again.

Early History
Before the adoption of the Twelfth Amendment in 1804, the candidate who ran second in a presidential race automatically became vice-president. That's the method in which Thomas Jefferson became John Adams' vice-president

HIGH PRESSURE WASHING

OF POULTRY HOUSES AND VEAL PENS

BARRY L. HERR

1744 Pioneer Road, Lancaster, Pa.
Phone: 717-464-2044

EQUIMIST



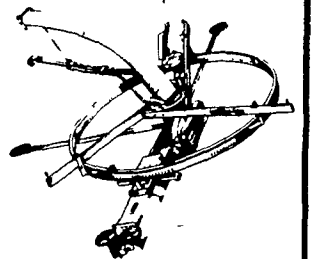
AUTOMATIC INSECT CONTROL

- 24-Hour Protection
- Effective, Effortless
- Quiet and Inexpensive

Pequea Blacksmith & Saddle Shop

HORSESHOEING - SADDLES - HARNESS & REPAIRS
BELTS & BUCKLES

DAVID E. FISHER 2678 BACHMANTOWN RD
JOHN S. FISHER RONKS, PA. 17572



Star-trac is here!

Get everything you're entitled to every feature and convenience you want in the world's newest silo unloader. It's called Star-Trac. Strong, simple and quiet. The ultimate machine that's light years ahead of any ring-drive unloader you've ever seen. Stop in and see it today.

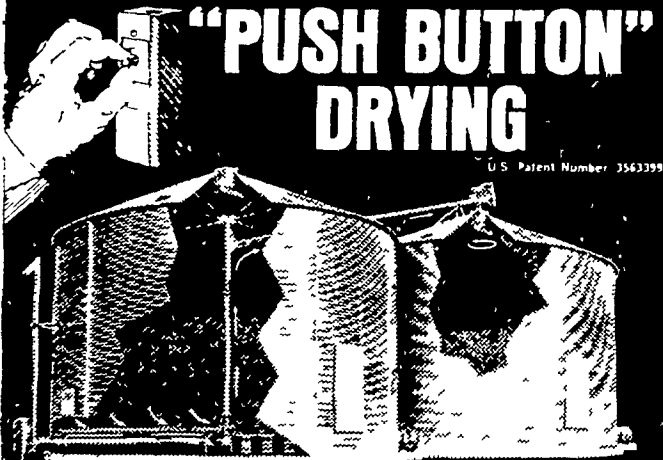
10% DISCOUNT UNTIL JUNE 15

DON R. NISSLEY

RD 1
New Providence, PA
717-786-7654



"PUSH BUTTON" DRYING



SHIVERS CIRCU-LATOR

Circu-Lator transforms your drying bin into a totally automated Continuous Flow System with drying capacities of 1,600 to 6,000 bushels of corn per day (25% - 15%) depending upon bin and fan size. It dries high moisture grain (30% and above) with ease, and operates around the clock without babysitting.

With the Circu-Lator, your entire bin becomes a surge tank — fill it as fast as you harvest. When adjacent storage bins are full, the Circu-Lator becomes a high capacity Recirculating Batch Dryer which may be rapidly filled to the eaves.

Check into the Circu-Lator. See why the Best Continuous Flow System is Also the simplest and least expensive.

Thinking About Spring Planting?
What About Fall Harvesting?

Tired Of Selling Your Years Labors Cheap?
Continuous flow drying can be inexpensive and profitable!

Call us for details

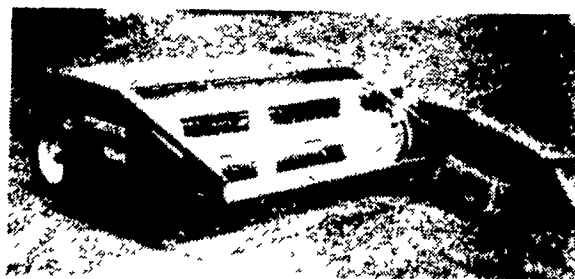
GAYLORD EQUIPMENT

88 Ridge Rd., Monmouth Jct., NJ 08852
201-329-2666 (day) or 609-799-8647 (night)
SALES - SERVICE - INSTALLATION

HESSTON FARM EQUIPMENT

Early Bird Buyers Bonus Ends May 31st!

- Hesston Forage Harvester, Pull Type... **\$400**
- Hesston 1090 **\$250**
- Hesston 1070 **\$100**



EASY WAY TO MAKE HAY

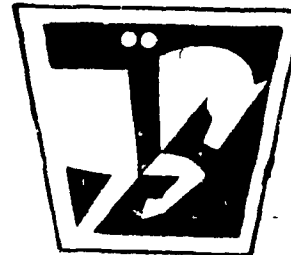


M-C Rotary Scythe

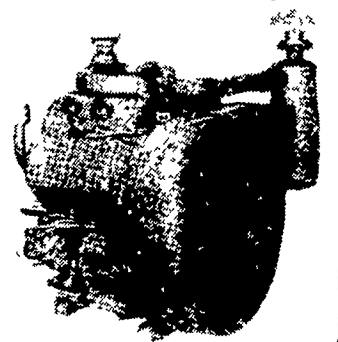
M-C Rotary Scythe

- Mows and conditions in 1 trip
- Non stop No plugging
- Saves rain soaked hay crop
- Handle any hay crop better

7 Ft. and 9 Ft. IN STOCK



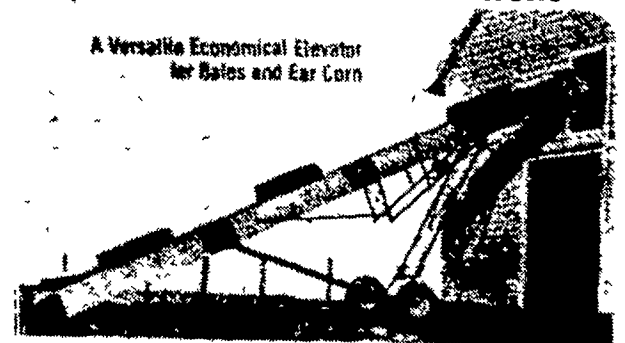
WISCONSIN ENGINES



NEW & USED SALES AND SERVICE

ZIMMERMAN PORTABLE ELEVATORS

A Versatile Economical Elevator for Bales and Ear Corn



WELL BALANCED, RUGGEDLY BUILT FOR MANY YEARS OF TROUBLE FREE SERVICE
28 Ft. **\$895** 32 Ft. **\$975**
36 Ft. and 40 Ft. Also Available

SALES & SERVICE

MILLER'S REPAIR

1 Mile North of Bird-in-Hand
8 miles East of Lancaster
RD1, Bird-in-Hand, PA Phone 717-656-9013