

REAL ESTATE

REAL ESTATE

CENTRE CO. FARMS

73 Acre, 62 tillable farm, located in Penns Valley. Farm features hardtop road frontage, 10 room frame farm house with central heat, 2 story bank barn with attached loafing shed. Present use is beef. All bldgs. are in good condition, \$120,000 with owner financing available.

Unionville Area - 184 Acre, 12 tillable farm with beautiful 2 story frame home with features modern kitchen, 6 bedrooms, up-to-date heating system, 2 story bank barn and other out buildings. Present use is beef, \$195,000. Owner financing available.

One acre wooded lots plus many additional mountain land tracts at all prices.

Call:
JOHN CURTIN
REAL ESTATE

Bellefonte, PA
814-355-2324
Miles Clevensine 814-383-2755
James Caldwell 814-355-4454

17,300 LB. HERD AVERAGE from 93 milkers on this showplace colonial farm in same family since 1814. Fine 90 cow DeLaval pipeline barn with new custom milkhouse and separate calf nursery and 54 tie heifer barn. Stately pillared home has library, 3 fireplaces, 4 tile baths. Two fine tenant houses. Late-model equipment and young stock for \$450,000 or \$298,000 bare w/good terms.

STOCKED AND EQUIPPED 169 acre farm with fine set of buildings. 62 cow barn has concrete silo plus trench, cleaner, transfer station. Well-kept 10 room home has 1½ baths, formal dining room. 40 milkers, young stock, tractors and equipment \$186,000 bare.

"SHADY BROOK", quaint 150 year old mountain home on 30 woodsey acres with 2 sparkling streams. Good 2 story barn. Nice retreat for \$38,000.

RETIRING OWNER offers 325 acre Cherry Valley farm. 10 room colonial home set back on tree-lined lane. 48 tie barn has cleaner, transfer station, newer pole barn. Asks \$122,000 w/29% down.

44 ACRES IN TWO FIELDS on 135 acre farm, 100 tillable. 40 cow barn w/400 gallon tank, cleaner, silo 6 bedroom home has new bath. 36 milkers, machinery \$125,000, terms w/owner.

NICE SET-UP on this 411 acre farm, 250 tillable. 110 cow pipeline barn, 4 big silos, mix-mill feed factory. Fine 12 room home. 73 milkers, young stock, White 4 wheel drive plus 3 other tractors and equipment. \$320,000 w/terms.

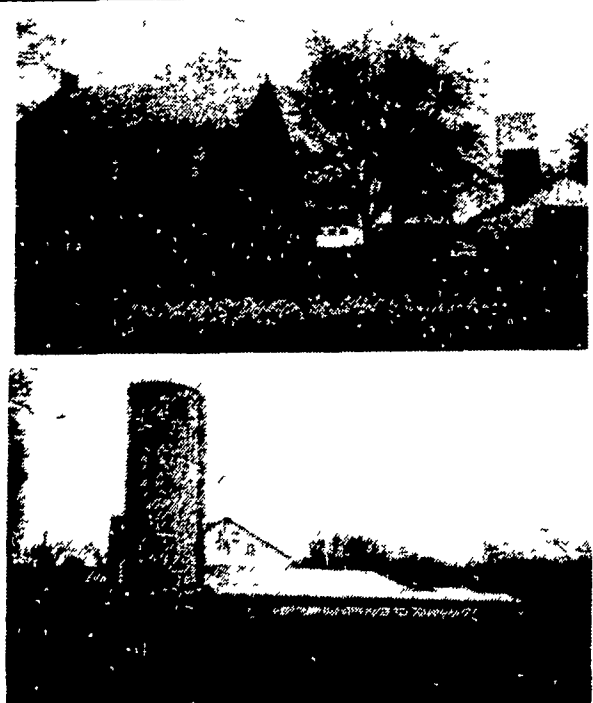
FREE DAIRY LISTS.



WIMPLE REALTORS
SLOANSVILLE, NY

518-875-6355

"FRESH LISTINGS DAILY"



105 ACRE
FRANKLIN COUNTY DAIRY FARM

Bordering Waynesboro - Brick dwelling, free stall dairy barn for 75 head, milking parlor, 20 ft. concrete silo with unloader, and bunk feeder barn. All buildings in excellent condition.

Note: Portion of farm bordering Waynesboro would be adaptable for residential development.

\$3,000 per acre

PETE HARNISH
REALTOR

Phone (717) 299-8931

REAL ESTATE

REAL ESTATE

UNDER \$700 AN ACRE

305 Acre-Bradford Co. dairy farm, no reasonable offer will be refused. Approx. 190 acres tillable will balance in pasture and woodland, 70 plus free stalls with Surge 8 stall parlor, individual calf pens, maternity and calf growing pens, Badger self feeder, 3 silos 20x35 Harvestore, 20x60 and 16x50 concrete staves. (2) 400 gal. bulk tanks, heifer barn w/tie stalls and 14x35 silo, machine shed, granary/shop combination with work bench. Another barn suitable for hay or machinery storage. 8 rm. house w/hot water heat and all modern conveniences. 10x55 trailer on separate lot with drilled well. Immediate possession. If required present owner will work up to 60 days after signed sales agreement to assist in planting spring crops.

Owners
717-549-7351

TOP-NOTCH DAIRY FARM — 200+A, with 100 A, tillable (gravel), 40'x180' barn w/74 tie stalls, 40'x50' addi. w/24 heif. stalls, machine bldg.; nice 4 bdrm. house with new kitchen, & bath, full bsmt. w/laun. & garage. 2 bdrm. tenant house, pond, 4 silos. Includes some eqmpt. Call.

OPERATING DAIRY FARM — 200 A, w/70+ tillable, cmt. blk. barn w/38 tie stalls, box stall, silo w/new unloader, heif. barn for 15+ animals, out bldgs.; very nice 4 bdrm. home; buy eqmpt. or bare. Quick sale \$87,500.00.

COUNTRY FARM OR BUSINESS — 64 A. w/tillable, pasture & 25 A. woods. Lovely 2 story home with new oak kit, din.-liv. w/FP, 2 baths, many new features, full bsmt.; also lrg. 3 story barn w/living area, heating & plumbing; will sell w/or w/out barn facilities & min. acreage. Call for more info.

Other res., lake, farm, and comm. properties available.

NORVEL T. REED, JR., BROKER
Call anytime (716) 761-6004



SOUTHWEST REALTY
191 W. Main St.
Sherman, NY 14781

FARMS FOR SALE

NEW LISTING. 250 acre Bradford Co., 150 acres tillable, 60 comfort stalls, 3 silos, very lovely home & much more. Priced at \$250,000.

475 Acre Dairy Farm, 154 freestalls, 50' x 312', 50' x 245' barns, double Herringbone parlor, 14 room modern home, 8 acre lake & much more, good area, Bradford Co.

SNYDER CO. 77½ acres w/stream, woods, 50 tillable acres, frontage both sides of hard road.

Large 180 acre freestall setup, Bradford Co.

LOOK! Mom & Kids, a mini-farm operation for you. This automated broiler setup reduced. It has a 20,000 bird capacity, very lovely home in a good area of Union Co. Priced at \$59,900.

4½ acres, lovely 2½ story well built home, plenty extras, woods & stream, scenic commuting distance to Harrisburg area, low taxes, maintenance, & heating costs, drastically reduced to \$40,000.

WOODS! Are you looking for 2 or more acres wooded sites w/streams & seclusion? Some available in Central PA.

Hired Man Special, ready to move, 1972 Skyline Homette Mobile Home, 2 bedroom, bath, kitchen, dining area & livingroom, central air conditioning. Make this buy & put on your lot. Priced at \$4500.

Ask for One of the Farm Men
For Additional Details & Information

KINGSWAY REALTY
REALTORS
1770 Oregon Pike
Lancaster
Phone: 717-569-8701

REAL ESTATE

REAL ESTATE

SOUTHERN KY. FARMS

256 Acres With Excellent Home From Yesterday Years - 2 Story Stone Home With Columns - Oil Hot Water Heater and Woodburning Fireplace - 2 Baths - Partial Basement - Farm is 90% Tillable - Grade A Milk Parlor, 8 on Each Side - 2 Upright Silo's - 8 Barns - 2 Older Tenant Houses on City Water - Wells and Ponds - Large Tobacco Base.

Grain, Oil, and Cattle Farm - 212 Acre Farm Approximately 100 Acres Tillable Remainder in Pasture and Woodland - Modern 3 Bedroom Home - 2 Barns - 2 Excellent Springs - Tobacco Base - and Landholders Interest in 3 Oil Wells Presently Pumping.

Dairy, Beef, Grain, or Tobacco - 496 Acres - 350-Acres Tillable - 100 Acres in Pasture - Remainder in Woodland and Young Timber. Located on Blacktop and Gravel Road - 5 Miles From Progressive Town - Improved With 3 Houses - 9 Room Main House - Recently Remodeled - 2 Smaller Tenant Houses - Tool Shed 180 x 30 - 8 Barns Tobacco or Stock - 2 Grain Bins - 2 Upright Silos - Double 3 Milk Parlor - 17000 lbs. of Burley Tobacco Bases - Water Supply by City, Spring, Creek and Small Lake.

Cattle and Hog Farm - 147 Acres Grass Farm - 90% Cleared - 3 Bedroom Brick Home - 2 Barns - Good Fence - On Blacktop.

373 Acre Dairy Farm - 2 Upright Silos - 2 Trench Silos - Auto Feed Bunk - 200 Acres Tillable - 17 Unit Choir Boy Turnstyle Lactorium - 1980 Possession.

260 Acre Grade A Dairy - 3 Bedroom Brick Home - Full Basement. Double 4 Milk Parlor - Covered Pit Silo - Abundance of Water 40% Tillable - Fenced & Cross Fenced - Ready To Go - You Could Start Milking Tomorrow - See This One Today.

Several Smaller Acreage Tracts
GREENUP REAL ESTATE
& AUCTION CO.

502-237-4077
P.O. Box 388
Scottsville, Ky. 42164
James W. Cook
Broker

LANCASTER COUNTY

83 acre dairy, 2½ story stone house with 4 bedrooms, modern conveniences. Room for 60 cows, 3 silos, tobacco shed, milkhouse with 350 gal. bulk milk tank, 65 acres tillable, spring fed pond, road frontage along Rt. 897 & between Rt. 322 & 897

13 acre general farm, 2 story log & frame house, 5 bedrooms, large kitchen, 1½ bath, frame barn & 2 car garage, stream in meadow. Natures beauty revealed in this ideal country farmette.

Farm & commercial property. 74 acre general farm with 2½ story old brick house with modern conveniences, 4 bedrooms, plenty of closet space, old but sturdy bank barn, old stone mill (needs repairs), marble stone quarry of 15 acres. This farm can be sold as a whole or can be divided into smaller parcels.

58 acre general farm & part commercial property. 2½ story brick house, 3 bedrooms, modern conveniences, bank barn, silo, all road frontage zoned commercial.

46 acre dairy & commercial farm, bank barn with stanchions, large corn barn, tobacco shed, 2 silos, bunk feeder, concrete barn yard, about 50% of farm zoned commercial.

38 acreage woodland.

Building lots in Akron, Denver & Lutz area.

CUMBERLAND COUNTY

28 acre going business property. Four businesses included in sale.

- A — Large new furniture showroom.
- B — Used furniture showroom.
- C — Auction room with luncheonette.
- D — Horse show ring with lunch stand & Judges stand.
- E — Large 2½ story stone house with large spacious rooms, plenty of road frontage & room for expansion.
- F — Stock & Equipment can be purchased at inventory.

131 acre dairy, 2½ story brick home with 3 bedrooms & bath, modern conveniences, bank barn with 30 stanchions, corn shed, heifer pens & implement shed.

LEBANON COUNTY

38 acreage near shopping center, road frontage on two roads.

17 acre general farm, road frontage along Rt. 897 & along a township road. Township water available.

MONTOUR COUNTY

14 acreage wooded, beautiful view of lake.

UNION COUNTY

12 acre poultry farm for broilers. 2½ story house with modern conveniences. Two floor broiler house, 164' x 32' with room for 16,000 broilers, new automatic feeder, shop 15' x 20'.

Many Other Properties For Sale Locally or in Surrounding Counties through our Cooperating Real Estate Brokers

CHRISTIAN M. MOSEMAN
REAL ESTATE BROKER
734 Main St., Akron, PA 17501
717-859-1004 or 717-733-1224 or
Milton G. Huber 717-299-5136

C
O
U
N
T
R
Y

P
L
A
C
E
S

F
A
R
M
E
T
T
E
S

W
O
O
D
S