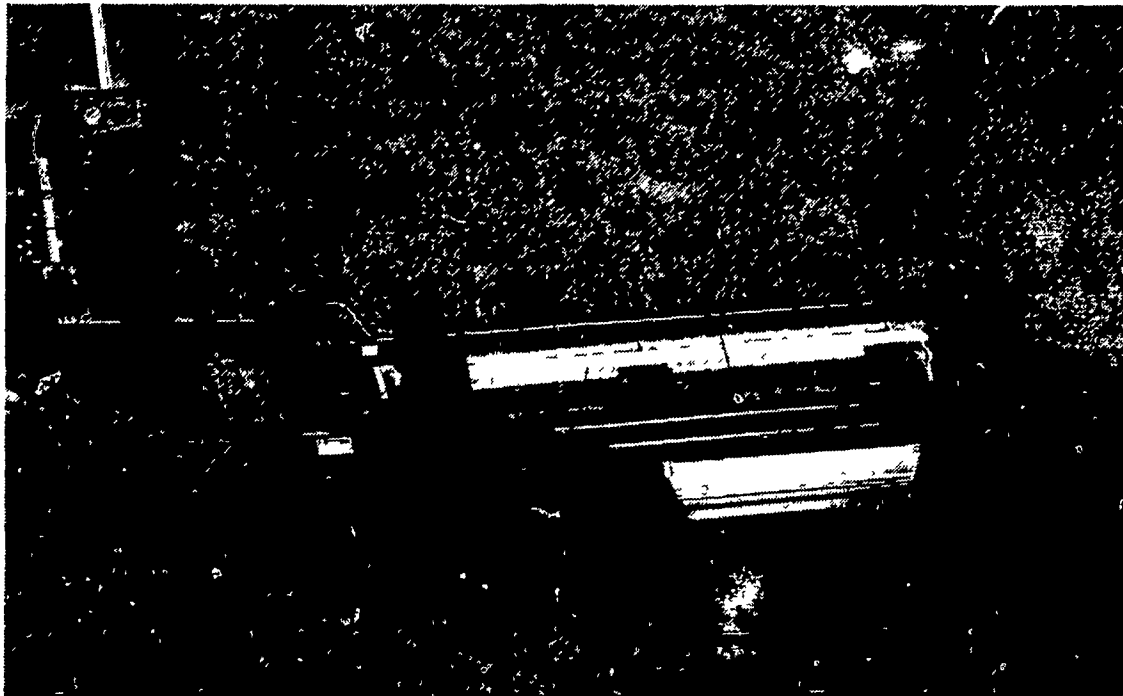


# SIMPLE IS BETTER

## IH 1190 MOWER CONDITIONER IS SIMPLE & EASY

- ★ ★ ★ Header-mounted conditioner rolls crush & crimp to save leaves, promote fast drying.
- ★ ★ ★ "Over-The-Top" frame design allows an unrestricted hay flow.
- ★ ★ ★ Patented roll separation lets you clear slugs without leaving the tractor.
- ★ ★ ★ Adjustable 44" diameter reel feeds crop gently to the conditioning rolls.
- ★ ★ ★ Every drive component is fully accessible for easy servicing.



**COME IN ... TRY THE SIMPLE HAY MACHINE**

**IH 1190 MOWER CONDITIONER**

**JUST RECEIVED:**

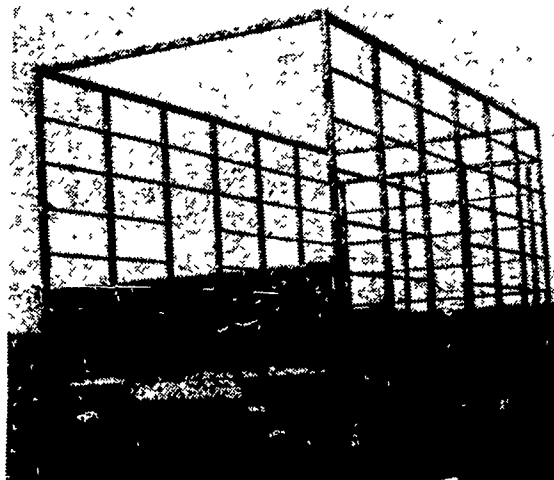


**LELY GROUND DRIVE FERTILIZER SPREADER ON STEEL WHEELS**



Available for Delivery

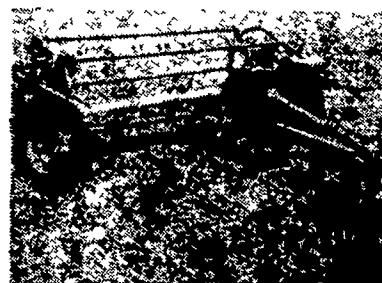
**RUGGED STEEL BALE WAGONS**



Call for Price - Toll Free in Area Codes - 215 & 717 800-732-0017

**GRIMM TEDDERS**

★ **MAKE QUALITY HAY BETTER & FASTER**



- ★ PTO and Ground Driven
- ★ Available With Rubber Teeth.

**PARTS DEPT. - Call Us, We Probably Have It!**

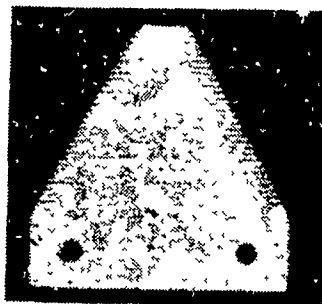
**MOWER ACCESSORY SPECIALS!**



MA 22837 - 7 Ft. Knife  
List \$49.30 - SPECIAL **\$35.00**



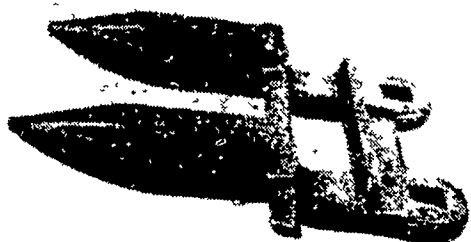
M 22831 Section  
List 45¢ each  
Special **37¢** each



**HEAVY DUTY EQUIPMENT HITCH JACK**  
List \$63.25  
SPECIAL **\$15**



MC 2041Z Guard  
List \$3.24 - SPECIAL **\$2.84**



**TRACTORS**

- |                              |                                   |
|------------------------------|-----------------------------------|
| Case 1200 4 WD w/front blade | IH F460 gas AC 5040D              |
| IH Farmall H                 | IH 444 gas                        |
| Satoh S650                   | Massey Ferguson 175               |
| David Brown 990 w/loader     | Farmall 966D                      |
| IH F1066D w/cab              | Farmall 806D                      |
| IH F504 gas w/mower          | IH Farmall Super A w/sickle mower |
| IH 4166 4 WD w/3 pt. hitch   | IH Farmall A w/plow & cult.       |
| IH F756D                     | Deere 3020 Gas                    |
| IH 4120 skid loader          | F706D-310 Engine                  |
| IH Farmall A w/loader        | IH 574D w/2050 A loader           |
| IH I454 gas                  |                                   |

**DISK HARROWS**

- |                  |                       |
|------------------|-----------------------|
| IH 370 36 blades | Bush Hog 20 ft. wings |
| IH 350 32 blades | IH 470 11'6"          |
| Kewanee 12 ft.   | Miller 12' Offset     |
| IH 370 12 ft.    |                       |

**GRAIN DRILLS**

- |                                |   |
|--------------------------------|---|
| Deere 16x7 single disk openers | IH 510 21x7 combination double disk openers |
| IH #10 16x7                    |   |

**CORN PLANTERS**

- |                           |                       |
|---------------------------|-----------------------|
| IH 400 cyclo 8 row narrow | IH 455 4 row wide     |
| IH 400 cyclo 4 row wide   | Deere 1300 4 row wide |
| IH 400 cyclo 6 row narrow |                       |

**PLOWS & TILLAGE**

- |  |                                       |
|--|---------------------------------------|
| IH 540 4F-16"                                  | Sunflower SC-16 chisel, 16" wing-fold |
| IH 3F-14" trailing Brillion 7 shank sub-soiler | Oliver 4F-16"                         |
| IH 45 vibra shank 10 ft., mounted              | IH 700 5F-16" Auto                    |

ALL NEW & USED PRODUCTS BACKED BY  
**HOOBER PARTS & SERVICE**

**RADIO CONTROLLED TRUCKS FOR BETTER SERVICE**  
**C. B. HOOBER & SON INC.**  
INTERCOURSE, PENNA. (717) 768-8231 AUTHORIZED UPS STATION

