

classified ads

PHONE - 717-626-1164 or 717-394-3047

FARM EQUIPMENT

For Sale - 4 row no-till Cobe corn planter, like new \$3500. 914-856-8097.

For Sale - Hesston stak hand 30, good condition, \$3800. Call Ruello Mushrooms, Inc., Rising Sun, 301-658-5692 or 658-5681 eves.

For Sale - 73 Ac Gleaner L Combine corn-soybean special, 4 row corn head, 13' grain platform with floating cutter bar, straw chopper, grain saver, new engine installed Nov. 1978. Call 717-993-2108.

FARM EQUIPMENT

For Sale - 1976 Int. tractor, model 766, 670 hrs., WFE, full set weights front, 2 sets weights on rear. 717-896-8655 or 896-8042

JD 5010 Tractor, w/new 5020 engine, 250 hours, 144 horse power, \$9500, 215-255-5211

For Sale - MC 600 continuous dryer, 72 ft. bucket elevator with wet bins, augers, down pipe, 4-3600 bu. grain bins. Wm. Pusey, Jr., Glen Hope, PA 814-672-8196

FARM EQUIPMENT

Farmall cub, hydraulic, 2 way plow, cultivator, 5 ft. mower, wheel weights \$2500 Farmall "A" plow, cultivator, wheel weights \$1425

Farmall "BN" cultivator, 7 ft. mower, wheel weights \$1100 AC "B" with cultivator \$700 Farmall 200 cultivator \$1400 717-687-6553

For Sale - 4 row Int. 400 cycle air planter, all new discs, bearings and shoes, and Dickey John digital monitor, excellent condition, 717-733-3253

For Sale - Oliver Radex 3 bottom trailer plow, hydraulic lift on rubber in very good condition, 215-267-3739

For Sale - 1970 C-900 Ford grain truck, 16 ft. flat dump, grain sides with tarp; AC no-till 4 row corn planter with Dickey John Monitor; IH 17 disc grain drill; MF 202 work bull with loader; 2 16 ft. hay wagons with high bale sides; NH 56 hay rake. Call after 6 p.m. 301-692-6897.

Wanted - Corn planter, 2 row JD 290 or comparable equipment in good condition, 201-329-2765 after 5 p.m.

LOCAL CLASSIFIED ADVERTISING RATES

14c per word
1 96 minimum charge
Use This Handy Chart To Figure Your Cost

Words	1 Issue	3 Issues
14 or Less	1 96	4 70
15	2 10	5 04
16	2 24	5 38
17	2 38	5 71
18	2 52	6 05
19	2 66	6 38
20	2 80	6 72

KEYED ADS (ads with answer coming to a Box Number, c/o Lancaster Farming) 50 cents additional
Ads running 3 or more consecutive times with no change, billed at 20 percent discount
Deadline Noon Wednesday of each week's publication
Lancaster Farming
P O Box 366
Lititz, PA 17543
717-394-3047
or Lititz
717-626 1164

FARM EQUIPMENT

For Sale - Hesston 10W Stack mover, excellent, cylinder and hoses included \$650. Bucks Co. 215-598-3980 after 7 p.m.

For Sale - Int. 1066 dual wheel, cab, Int. 716 6 bottom plow, Int. Monmatic 2350 loader, Int. 205 combine, both heads, Int. sheller for 234 picker, Int. 1890 series Y license truck. Wm. Pusey, Jr., Glen Hope, Pa. 814-672-8196

FARM EQUIPMENT

New Berg barn cleaners last longer eliminating trouble making parts on others makes, low price Patz cleaner stacker, silo UL tripod up to 20' W. cable 50% off, New substitute cleaner harden chainforged rugged one replace most cleaners 10 yrs. guarantee, get prices, 215-445-6409.

For Sale - Ellis Keystone antique Threshing Machine. Sell or trade for old single cylinder gasoline engine. 215-855-6893 Ray Walton, 1610 Allentown Road, Lansdale, Pa. 19446

For Sale - New 3150 gal. Better-Bilt tank for truck mount or trailer mount with vacuum pump. PH: 717-354-0379

For Sale - NH model 850 round baler, excellent condition. Ford 2-row no till corn planter, \$500. Harford Co., MD 301-836-3782

Farmhand Model 815 Grinder-Mixer w/17' unloading auger, excellent condition. Huntingdon County. 717-483-6994

For Sale - Double axle 340 bu. manure spreader with hydraulic tailgate. 215-286-9343

For Sale - JD 40 self propelled combine, \$2000, JD 40 combine for parts \$600. 215-298-3457



BURY A HATCHET

FARM EQUIPMENT

Miller Disc, practically new, 18 ft. fold up extra heavy duty, \$8500. 703-338-6048

Tractor - 2470 Case, excellent, cab, heat, air, live PTO, 717-263-8424

For Sale - JD model 55 combine w/cab, air, heater, lights, flasher, variable speed & electric clutch, (1) 12' grain head with hume reel, hydraulic reel, variable speed reel, pickup guards, 334 3-row corn head, also extra parts. 717-667-2185.

For Sale - 2 row Massey Harris Self-propelled Corn Picker SWOPE AND BASHORE, INC. 717-933-4138.

For Sale - Case 1370 cab, air, heater, only 635 hrs., like new; Case 830 Comfort King, wide front, both ready for field. 301-582-1927.

For Sale - 1977 White 2-60 field boss diesel tractor 60 hp. with 350 hrs. 607-776-6355

For Sale - Papec 880 grinder mixer, like new, molasses pump 61 series TD6. 215-683-7421. Berks Co.

For Sale - JD Model 60 tractor, good running cond. \$1200. Chester Co. 215-384-7647.

For Sale - Grove dump wagon, steel bed, \$1200. Kingwise 42' elevator w/Wisconsin engine & corn drag, \$700. Stump Acres. 717-792-3216 York Co.

Wanted - Cattle sides for Chevrolet Fleetside pickup w/8 ft. bed. Chester Co. 215-384-2477

For Sale - Butler grain bin 4400 bu. with super air flow floor. 5 H.P. fan and gas dryer and 50 ft. elevator \$3500. Andrew Schertel, RDI, Barto, Pa. 19504 215-845-7508

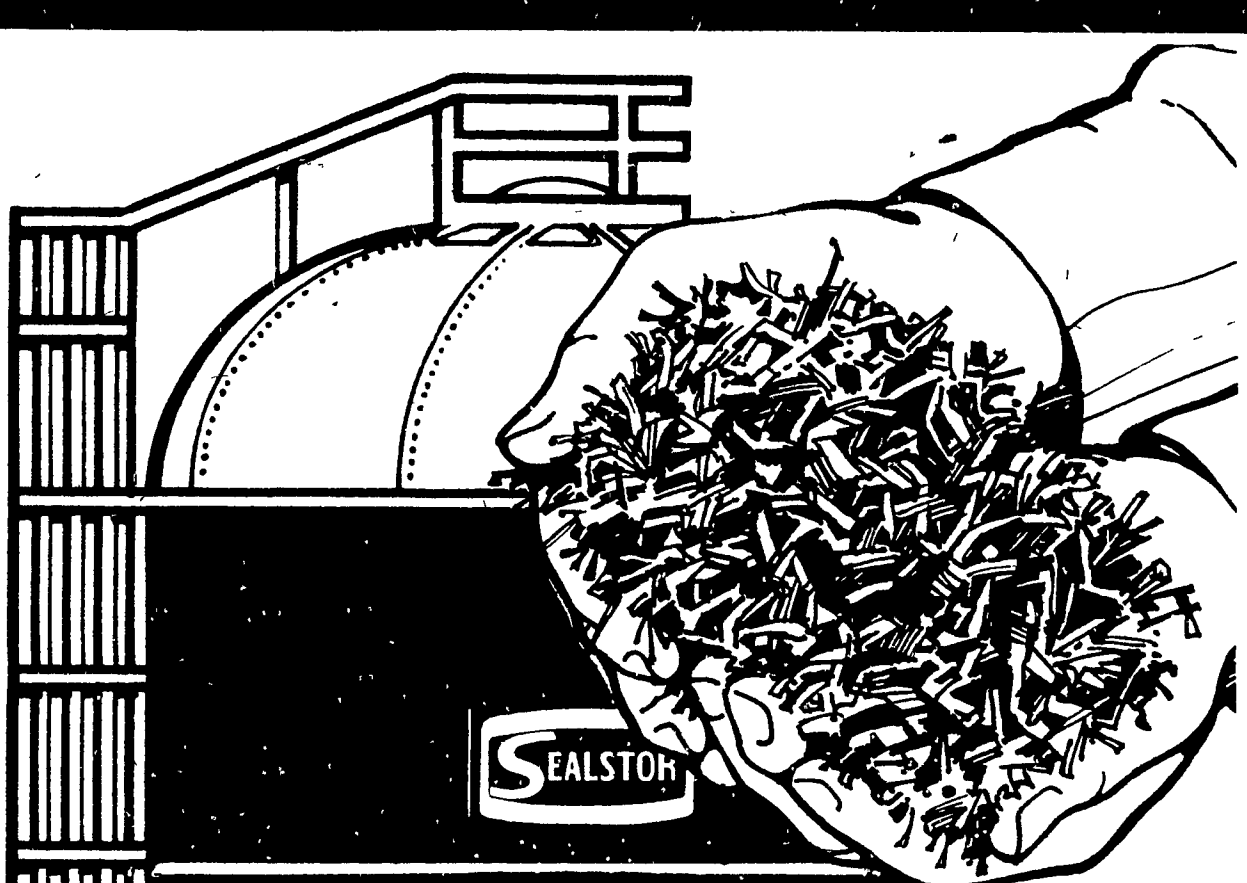
BANVEL®

Distributed By

P. L. ROHRER & BRO., INC.

SMOKETOWN, PA

PH: 717-299-2571



Good alfalfa haylage is packed with protein. To save it, SEALSTOR® it.

When handled and stored properly, alfalfa is the most complete livestock ration you can grow. When alfalfa is baled, leaves shatter. Protein is lost. Nutrients disappear.

With the Sealstor System you harvest alfalfa as medium-moisture haylage. There's less field loss, less storage loss, less labor, fewer weather worries. You can often windrow, chop and Sealstor haylage within 24 hours.

Sealstored haylage is protected in a glass-steel, oxygen limiting structure. Nutrients are preserved. You get a mildly fermented, sweet-smelling, palatable ration. You get more tonnage, TDN and protein. You eliminate baling. You push a button to feed. Figure it out. To Sealstor alfalfa haylage, is to save time, labor and feed value.

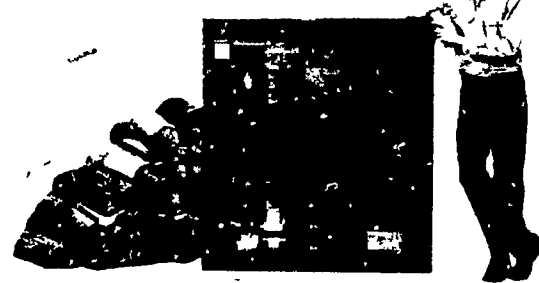
Our bottom unloader is a rugged sweep arm cutting auger. There are no costly chains to break. And, for big feeders, our big Sealstor is really big. 27 x 96

PENN DUTCH FARM SYSTEMS, INC.

2753 CREEK HILL ROAD
LEOLA, PA. 17540

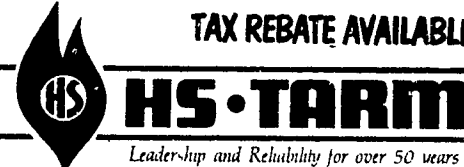
FOR INFORMATION - PLEASE CONTACT:
PENN DUTCH OFFICE - 717-656-2036
MEL - HOME - 717-768-3873
RENE - HOME - 717-393-2390

CENTRAL HEAT FROM WOOD (or Oil or Coal or Gas)



- Our Multifuel heating system automatically switches from one fuel to the other. It heats your house and your hot water. Safely. Reliably.
- You choose the most economical fuel. Or the most convenient. Either way, you're secure. Multifuel hot-water heat is the modern way to beat the energy crisis.

TAX REBATE AVAILABLE



Leader-hip and Reliability for over 50 years

Distributed by:
THE HEAT SHED
Revere, Pa. 18953
(215) 847-2224

DEALERS:

SCANDIA STOVES
Kutztown Pa 19530
215-683 5810

THE STOVE MAN
Rt 100 - Eagle
Uwchland, Pa 19480
215-458-5408

NOLAND COMPANY
Frederick, MD 21701
301-663 9541

SCANDAMERICA STOVES
Staffordville, NJ 08092
609-597-8545

MINNISINK OIL
Whippany, NJ 07981
201-887 2400

SUSQUEHANNA STOVES & SUN, INC.
Brogue, PA 17309
717 927 9214