

Fulton Grange meets

QUARRYVILLE - Harry Baker, master, presided at the regular meeting of Fulton Grange, No. 66 May 14, at Oakryn. A \$25 donation was given to Meals On Wheels and a \$10 contribution was given to the

National Grange Leadership Fund.

The Oakryn Senior Citizens, which is sponsored by Fulton Grange, presented a varied program: Kitchen

band composed of Earl Smoker, James King, Alta Hash, Verna Shirk, Lois Wood, Edna Groff, Verna Badger, Ann Giffing, Chris McCallin, Susan Fite, Esther

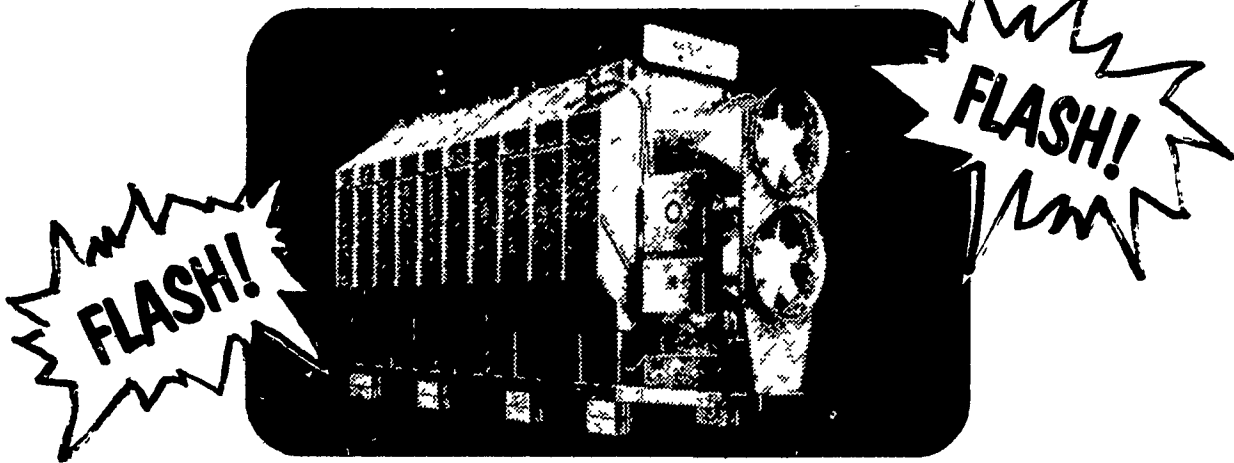
Lancaster Farming, Saturday, May 19, 1979—31

Wood, Helen Buckalew, and Vickie Wolfe, and accompanied by Glenn Hough. Mrs. Freeda Huber directed the band. Helen Buckalew rendered a mouth organ solo. A humorous skit was

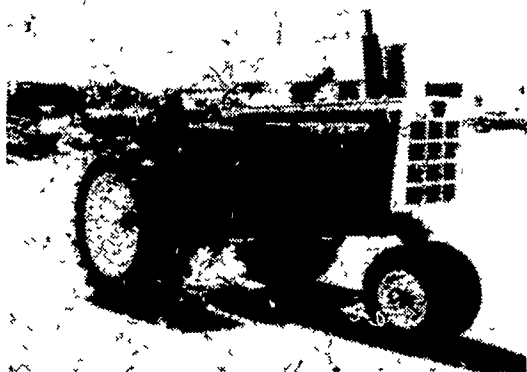
presented. A quiz concluded the program.

The Lecturer, Mrs. Thomas Galbreath, will be in charge of a memorial program at the next meeting May 28.

JUST RECEIVED NEW FARM FANS GRAIN DRYERS ...Model AB-500A Staged Automatic



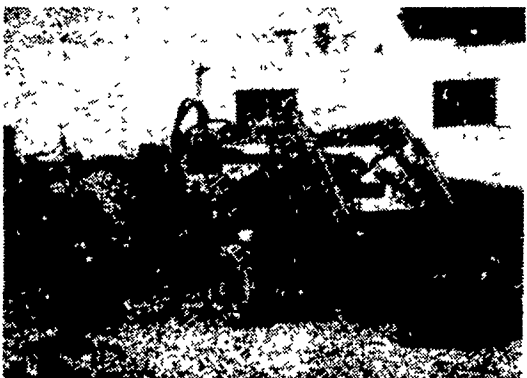
CONTACT US FOR YOUR DRYER NEEDS



Oliver 1800 Diesel Tractor \$4,850.



Ferguson 30 Tractor \$1,850.



Used Kubota Tractor w/Loader
Model L225, A-1
Condition \$4,375.



New Holland 479 Haybine. \$2,750.

USED TRACTORS

John Deere 50 \$1,250.00

USED HARVESTER SPECIALS

NH 880 2-row narrow row head \$3,650.00
NH 717 Single Row Head,
9 Knife Cutter Bar 1,795.00
NH 717 w/1-row head 2,195.00
NH 717 1,175.00
John Deere #12 w/single Row Head 150.00

USED BALER SPECIALS

New Holland 67 \$775.00
John Deere 14T 750.00
John Deere 14T w/ejector 450.00
John Deere 24T 950.00
John Deere 24T w/thrower 1,750.00
New Holland 275 w/thr_{SOLD} 2,350.00

USED PLANTER SPECIALS

Tag 11650 John Deere 1250
6 Row Plateless \$2,350.00
1229 Ford 4 Row 775.00

MISCELLANEOUS

John Deere #18 1-row Corn Picker \$950.00
New Set 18.4x30 Snap on Duals w/New
Goodyear 6 Ply Tires 1,050.00

SPRING SPECIALS

1600 JD Pull Type Chisel Plow
8' w/new tires PRICE \$1,835.00
1700 JD Mulch Tiller
11' w/new tires PRICE \$4,395.00

USED GRAIN DRILLS

Co-op 15x7 Fert Grain Drill w/grass seed attach \$750.00
John Deere 15x7 FBB Drill 550.00
Ontario 14x7 Single Disc Drill 525.00

USED HAYBINES

New Holland 479 \$2,750.00
John Deere 1209 2,750.00
New Holland 479, as is 2,150.00

USED TILLAGE SPECIALS

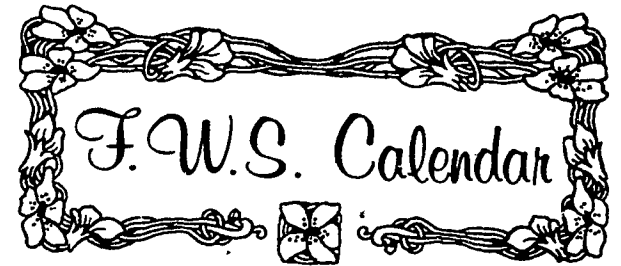
MF 620 12' Disc Harrow \$2,950.00
Oliver Disc 9' 1,175.00
Ford 4-16" Plow 950.00
John Deere RW 12' Disc 925.00
John Deere KBA 32x18 Wheel Carrier Disc 875.00
John Deere KBA 28-18 Disk 850.00

USED COMBINE SPECIALS

AC - C w/4 Row Corn Head 14' Plat **SOLD** \$6,750.00
Cockshutt 427 w/Power Steering & 10' Platform 1,450.00
AC Model E w/10' platform, pickup reel,
2 row corn head, real clean 5,750.00
John Deere 55 Corn Soybean Special 12' head 9,700.00
John Deere 55 Combine w/cab and 12' Platform 7,500.00
235 Corn Head 1,000.00

LET OUR PARTS DEPT. HELP YOU KEEP
YOUR EQUIPMENT ON THE MOVE WITH
GENUINE JOHN DEERE FILTERS AND OIL
TORQ GARD ENGINE OIL AS LOW AS
\$2.90 A GALLON

By the Drum
SEE US TODAY FOR ALL YOUR LUBRICATION NEEDS.



Today, May 19

Lancaster Co. Society 15 International Brunch, 10 a.m. Willow Valley Restaurant.
Lancaster Co. Society 4, meeting, 1:30 p.m. at

Clara Musser's, Columbia R3.

Berks Co. Society 3 at housewares sale.
Lancaster Co. Society 3 meeting at Mrs. Carl Meak's, Denver.

Farm Calendar

Continued from Page 10

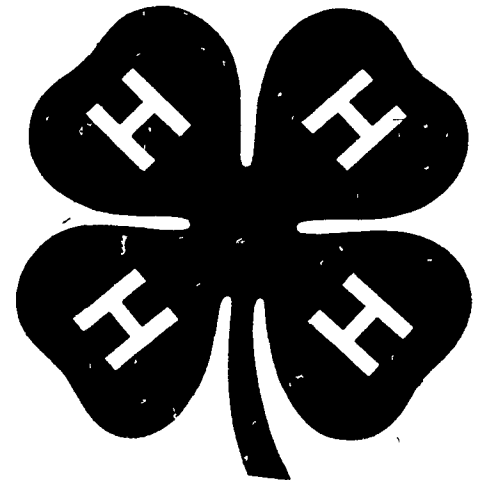
Vegetable Gardening Club, 7 p.m. in the vo-ag room of Pequea Valley High School.

Thursday, May 24
American Breeders Service Region -047 awards banquet, 7:30 p.m. at the Robert Fulton Inn, south of Quarryville.

Monday, May 21
Lancaster Co. Society 30, meeting.

Tuesday, May 22
Lancaster Co. Society 27, outdoor supper and miniature golf, 4:30 p.m., Village Greens.
York Co. Society 12 meeting at York Co. Fiddlers Assn. Bldg. near Brouge.

Wednesday, May 23
Lancaster Co. Society 28, tour Lancaster Co. Meet at East Towne Mall 9:30 a.m.



CORN FOR '79

★ NITROGEN

- ANHYDROUS AMMONIA
- LIQUID NITROGEN

★ COMPLETE FERTILIZERS

- BROADCAST or STARTERS

TOPDRESS ALFALFA AFTER FIRST CUTTING

- ★ For Top 7 to 8 Ton Yields You Should Be Fertilizing At Least Twice A Year

- ★ ALFALFA SPRAYS ALSO AVAILABLE ★



ORGANIC
PLANT FOOD
CO.

2313 Norman Rd., Lancaster, PA Ph: 397-5152



Evergreen Tractor Co. Inc.

30 EVERGREEN RD., LEBANON, PA 17042,
PHONE (717) 272-4641

AUTHORIZED
SPERRY-NEW HOLLAND
PARTS and SERVICE