

## Public Sales Register

Closing Date - Monday, 5:00 P.M.  
of each week's publication

THURS. MAY 31 - 5:30 P.M. Public Auction Located in back of Keim's Service Station along Rt. 325 at Gold Mine Cross Roads, 1 mile south of Tower City, across st. from Star Craft plant. Ralph A. & Katherine P. Keim Owners. George Deibert Auctioneer.

THURS. MAY 31 - 10:00 A.M. Public Sale of Antiques, Household Goods & Tools. Located along Road leading from Conestoga to Marticville, RD1 Pequea, Martic Twp., Lanc. Co., PA. (Across from Sickman's Mill). Sale by Mr. & Mrs. J.A. Gerstl. Howard Shaub, Auctioneer

THURS. MAY 31 - 6:30 P.M. Public Sale of Valuable Real Estate. Located along Rt. 309 between New Tripoli and Schnecksville in Heidelberg Twp., Lehigh Co., PA. Sale by Mrs. Paul Wessner. Conducted by Ralph W. Zettlemoyer Auction Co.

THURS. MAY 31 - 9:00 A.M. Public Sale of Farm Machinery, Antiques, Collectibles and other Furnishings. For the Estate of Cleo M. Smith, Century Acre Farm, County Line Rd., Line Lexington, PA. Sanford A Alderfer Brokers and Auctioneers

### JUNE

FRI. JUNE 1 - 6:00 P.M. Public Sale of New & Used garden tractors, lawn mowers and Equipment. Held at Lawn Care of PA, Martindale, PA. Daniel Z. Martin Owners. Kline and Kreider auction service.

FRI. JUNE 1 - 12:00 Bell Farm Dairy Sale - 74 Head of Ayrshire, Holstein and Jersey Cattle Held at the PA Guernsey

Sale Pavillion, located 4 miles East of Lancaster, PA along Rt. 30 John & Penny Bell and Family Owners Ralph W Horst Auctioneer

FRI. JUNE 1 - 7:30 P.M. Complete Holstein Dispersal of Local herd of 90 head Registered and Hi-grade Holsteins. Held at Shady Lane Dairy Sales, Quarryville, PA 717-786-1725.

SAT. JUNE 2 - 10 A.M. Real Estate 1 P.M. Public Sale of Valuable Real Estate and Personal Property located 3 mi e west of Honey Brook, 5 mile north of White Horse, 1 1/2 mile south of Churchtown, 4 miles east of Blue Ball, along Rt. 322 Caernarvon Twp., Lancaster Co., Pa. Sale for the Robert Evans Estate, Charles A. Evans and Amos M. Evans, Administrators; Diffenbach's Auctioneers

SAT. JUNE 2 - 2 P.M. PA 3RD Performance Tested Ram Sale, As Part of the State Sheep Field Day as The Washington County Fairgrounds, Washington, Pa Sponsored by the PA Department of Agriculture in cooperation with the PA State University, The PA Sheep & Wool Growers Assoc., and The Washington Co Sheep & Wool Growers Assoc

SAT. JUNE 2 - 11 A.M. Public Sale of 20 Acre Farm & Equipment. Located along Nagle Rd, approx 1 1/2 miles south of Rt. 422, Exeter Twp., Berks Co., Pa Terms by John P & Gayle Behm. Elton & Alvin Horning Auctioneers, Horning Farm Agency, Inc.

SAT. JUNE 2 - 10:00 A.M. Public Sale of 30 acres, Anti-

que, and Collectibles Household Items and Tools Along Cherytown Rd in Jackson Twp. Northumberland Co. PA Watch for auction signs along Rt 225 midway between Dornsife and Red Cross, 15 miles south of Sunbury John H Treon Owner, George N Diebert Auctioneer

SAT. JUNE 2 - Public Sale of Frame Dwelling on 1 acre lot, Antiques, Old Guns, Carpenter and Butcher Tools and Household Goods Located on corner of 47th St and Gibraltar Rd., 4 blocks South off Rt 422, at Fesleys Restaurant, approx 2 miles N of Gibraltar along Gibraltar Rd., Exeter Twp., Berks Co PA Kathryn Smith, Executor for Henry Keller Estate LeRoy S Horst and Paul W Horst Auctioneers.

SAT. JUNE 2 - 6:30 P.M. Danville Livestock Market, horse sale. Located Old Route 11, Danville, PA Melvin M Lehman, owner

SAT. JUNE 2 - 9:00 A.M. Public Sale of Valuable Real Estate, Antiques and Personal Property. Located at Rd 12, York Co., PA From Rt. 83, Exit 7, Mt Rose Ave. (Rt 124) proceed East approx. 8 miles sale located 1/2 mile east of Golden Spike Restaurant, along East Prospect Rd Amy A Leiphart Owner Frederick Toomey Auctioneer

MON EVE JUNE 4 - Holstein Fresh & Springing Heifer Sale, 3 miles North of Chambersburg, PA Gerald and Mabel Hammond Ralph W Horst, Auctioneer

WED. JUNE 6 - 9 A.M. Consignment Sale by David H Good located 1/2 mile North of Route 23 on North Maple Ave in Leola, Lancaster Co., Pa. Watch for sale signs F. Snyder, R Martin, C Wolgemuth J Fry and L Horst, Auctioneer.

THURS. JUNE 7 - Monthly cow Sale at the Melvin Kolb, Inc Sales Barn, 2220

Dairy Road. Lancaster, Pa 1/601 Dennis Kolb Sales Manager, Robert Mullendore, Auctioneer

SAT. JULY 7 - 10:00 A.M. Public Sale of Coin collection, Antiques, & Household Goods, Located along 372 Midway between Quarryville and the Buck, corner of 372 and Church Rd Sale by Minnie Walters Auctioneers Lloyd H Kreider and Randall V Kline and Gary L Shirk Apprentice

SAT. JUNE 9 - 10 A.M. Annual Spring Heifer Sale at New Holland Sales Stables, Inc New Holland, Pa For more information contact Abe Diffenbach or Norm Kolb

SAT. JUNE 9 - 10:00 A.M. Public Sale of Valuable Real Estate, Household Goods, Antiques, Automobiles Located at Pequea Ave., Gap, Lancaster Co., PA Terms by Edgar C Umble Auctioneer Leon Kurtz

SAT. JUNE 9 - 2:00 P.M. Public Sale of 17 acre Farm Located 3 miles Northwest of Manheim, West of Rt 72, midway between Ruhl's U.M Church and Rt 72, along the Elizabethtown Rd., Rapho Twp., Lancaster Co., PA. Sale by Valeria H Kahley, Naomi Rudyk and Alvin W Kahley Auctioneer Rufus Geib

## GELDINGS TO BE AT BELLEVILLE LIVESTOCK MARKET WED., MAY 30

6 or 8 2 yr. old Belgian geldings, green-broke. John J. Dilling

# LARGE TWO - DAY SALE

## OF FARM EQUIPMENT "34th Anniversary Sale"

At our place of business located six miles south of Chambersburg Pa., one mile east of Marion, 1/4 mile east of Marion exit for Rte. 81 on Rte. 914 on

## MONDAY, MAY 28 AND TUESDAY, MAY 29

SALES AT 9:00 A.M. EACH DAY SELLING ON MONDAY, MAY 28 - 100 OR MORE

TRACTORS - TRUCKS - IND. EQUIPT., ETC.

Tractors of all makes inc. John Deere, Fords, Farmalls, Oliver, Massey Ferguson, David Brown, Allis Chalmers, Case and others, some with loaders and equipt., lawn and garden tractors, trucks, trailers, ind. equipt., posts, hardware and small items of all kinds, new blades and rotary mowers, etc.

### SELLING TUESDAY, MAY 29

Balers, Haybines, Harvesters, Choppers-various make and model; rakes, mowers, conditioners; planters, drills, self-propelled and pull type combines, pickers, plows, disc harrows, packers, spreaders, forage and hay wagons, loaders, blades, 3 pt. equipt., cultivators and usual run of equipt., tires and bal. of small items not sold first day.

FARMERS AND DEALERS - Bring in your surplus equipt. for this sale. Next sale Thurs. June 28. Closed Sundays & evenings at 5 p.m. except May 24-25 will be open until 7:30 p.m.

TERMS CASH: LUNCH AT SALE: CLOSED SUNDAYS.

### RALPH W. HORST

Sale Manager  
Phone 717-375-2824  
Marion, Pa.

Rentzel, Anderson, Upperman,  
Martin, Gossert,  
Auctioneers  
Harshman, Eberly, Gossert,  
Stull, Rentzel,  
Clerks

## AUCTION SALE SATURDAY, MAY 26

10:00 A.M.

Bethel, Pennsylvania  
TRUCKS, TRAILERS,  
TRUCK TRACTORS, DUMPS,  
FLATS, GRAIN TRAILERS,  
VANS, TOOLS

### TRUCK TRACTORS

PARTIAL LISTING: 1974 MACK R700, ntc-290 Cummins, Rebuilt, Sleeper, Wet Line 4x4 Air Shift, Tag Axle, 134-C White Rea; 1969 FREIGHTLINER 335 Cummins, rto-9513 Reyco Susp, Full Screw; R-600 MACK, V-8 with 10 sp. Road Ranger, t/a, 1000x22 Rubber; INTERNATIONAL c.o.e., Non-sleeper, s/a, 220 Cummins, 10 sp. Road Ranger, 1000x20 Rubber; 1970 DIAMOND REO conv., 318 Detroit, 13 sp., 10 sp. Overdrive, Heavy Duty 54,000 lb. Rears, 1000x22 Rubber; 1967 G.M.C. c.o.e. Sleeper, 318 Detroit, rto 915, Power Steering, Reyco Susp. 38000 lb. Rears, t/a, 1000x20 Rubber; 1967 G.M.C. c.o.e. Sleeper, 318 Detroit, rto 915, Hendrickson Susp., 38000 Rears, t/a, 1000x20 Rubber.

### ROLL BACK TRUCKS

1973 INTERNATIONAL with Schwartz Roll Back Bed & Winch, 900x20 Tires; 1971 FORD F-750 with Chevron 3 Car Roll Back Bed & Winch, 900x20.

### FOUR WHEEL DRIVE PICK-UP

1971 CHEVROLET 4 WD, 3/4 Ton Pick-up, 350 V-8, 4 sp., 16" Wheels, Snow Tires.

### TRAILERS

1971 TEMPTTE 45 Ft. Van Trailer, Sliding Tandem, Swing Doors; 35 Ft. Single Axle Grain Trailer; TRAILMOBILE 40 Ft. Van Trailer, Inspected, Roll Doors, 20" Rubber, Fixed Tandem; 35 Ft. Storage Van.

### MISC. ITEMS

3 NEWAY Tag Axles (1 has air lift); Set of 22" BUDD Wheels; Tires and Wheels (8:25x20 & 900x20); 2 Fiberglass Hoods 200 I.H.; Tire Machine; 2 Floor Jacks, Air Car Bumper Jack; House Jack; HYD Press with Motor; 10 Ton Chain Hoist; HYD Cylinders; Chain Saw; 12" Circular Metal Cutting Machine; Misc. Tires of various sizes; many more items to numerous to mention.

THIS IS JUST A PARTIAL LISTING...MORE CONSIGNMENTS BY SALE DATE.

DIRECTIONS: 40 Miles West of Allentown on I-78; Get Off at Bethel Exit (Exit 3); Sale Site is 1/2 Mile East of Bethel along Old Route 22.

*Ebersole & Shoop,*  
Auctioneers

930 Cornwall Road  
Lebanon, PA 17042

(717) 273-5408 (717) 534-2030

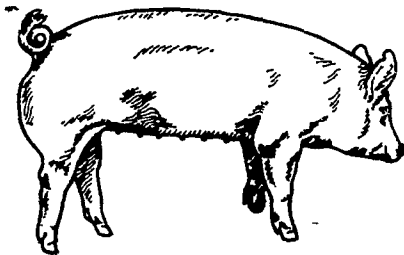
Information Call:  
Sale Manager  
NORMAN EBERSOLE  
(717) 867-2771  
(717) 273-5408  
Write or Call for Descriptive Catalog.

# BRED GILT SALE

SATURDAY,  
JUNE 16, 1979

1:30 P.M.

Located 8 miles North of Myerstown on Rt. 501 & 1 mile South of U.S. 22 on Rt. 501 at Bethel, Pa. Turn West at Bethel School to second farm on left.



50 Head more or less, 3 way cross bred Gilts, Yorkshire, Hampshire and Duroc. Gilts are bred to purebred Yorkshire out of Ivy Hill Farms, Smithburg, MD. Pigs are vaccinated for Erysipelas, wormed and treated for lice. No out side hogs will be sold at this sale, they are all home raised. Also two 3 way cross boars, breeding age.

Sale Conditions by  
**HENRY H. MARTIN**  
717-933-4279

Auctioneer Alvin Horning