

## Public Sales Register

Closing Date - Monday, 5:00 P.M.  
of each week's publication

FRI MAY 25 - 2 P.M. Public Sale of Valuable Real Estate & Building Lots, 20 Acres More or Less Located along Rt 340

& Meeting House Rd, 1/2 mile west of White Horse, 16 miles east of Lancaster, 4 miles north of Gap, Salisbury Twp., Lancaster Co., Pa Terms by

## PUBLIC SALE

From Route 11 at Inwood, W. Va. Turn East on Route 51 - Travel 3 miles to Ellinger's Market (formerly Haines') Turn right - .2 of a mile to sale - OR From Charles Town W. Va. Take Route 51 West of Ellinger's - turn left - .2 of a mile to sale.

**SATURDAY, MAY 26,**  
At 10:00 A.M.

APPROXIMATELY 20 - 25 TRACTORS - Including Cubs, Fords, John Deere, Internationals, Fergusons, and other makes - ALSO - We will be offering a good selection of plows, wagons, cultivators, new and used rotary cutters, post hole diggers, blades, discs, wood saw, rakes, baler, grain elevator, corn pickers and other farm related articles.

We will also be offering a good selection of new tools - Also used hand and electric tools - Some household articles - A good selection of glassware - Some antiques - Other articles - SOMETHING FOR EVERYONE

CUZ of Pennsylvania will be here with sewing material for the ladies.

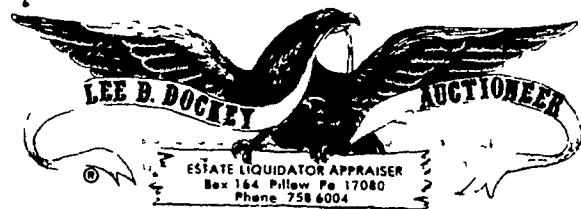
Terms: Cash. Nothing to be removed until settled for.

Sale Mgr.  
**EDGAR A. BOHRER**  
304-229-8354

Auctioneers: Miller, Bohrer and Martin  
Clerks: Ware, Bohrer and Bohrer

NOTE: This is a consignment Sale. Let us sell your surplus articles for you for a profit.

Not Responsible For Accidents On Premises  
LUNCH RIGHTS RESERVED



## PUBLIC SALE

**THURSDAY, MAY 31**  
6:00 P.M.

LOCATED 2 1/2 MILES SOUTH OF ELIZABETHVILLE, PENNSYLVANIA 2 MILES SOUTH OFF ROUTE 225. Turn at Mountain House Tavern. Watch for sale signs along Route 225 day of sale.

### REAL ESTATE

67 ACRES, MORE OR LESS, LOCATED IN ARMSTRONG VALLEY, HAVING A 2 1/2-STORY, 7 ROOM FRAME DWELLING AND FARM POND. ALSO HAVING FRONTAGE ALONG HARD-TOP ROAD ON 2 SIDES. THIS FARM IS APPROXIMATELY 99% TILLABLE. Real Estate to be offered at 6:00 P.M. For inspection and additional information phone 717-758-6004.

### HOUSEHOLD ITEMS

Coal Room Heatrola; Apartment Size Coal Stove; Frigidaire Refrigerator; Columbian Kitchen Coal Stove; Assortment of Dressers and Chairs; 2 Single Beds; Meat Grinder; Sausage Stuffer; Corn Sheller; Bee Hive; Etc.

### YORK SAFE

### ANTIQUES & COLLECTIBLES

Kitchen Coal Stove with Warming Closet; Wood Box; Oak Bureau; Library Table; Walnut Bed; Square Stand; Oak Case Sewing Machine; Cherry Seeder; Tripod for Kettle; Small Wine Press; Copper Wash-boiler; Half Bushel Measure; Etc.

TERMS: Real Estate - 10% Down. Further Terms and conditions to be given the day of sale. Personal Property - Cash. Personal checks accepted only from persons having an established account with Auctioneer.

### ESTATE OF GRACE A. WOLAND

Walter D. Woland  
Erma G. Butler  
Evelyn W. Williams  
James H. Woland, Executors  
Earl Richard Etzweiler, Attorney  
Lee D. Dockey  
Auctioneer-Estate Liquidator-Appraiser  
Box 164 Pillow, PA 17080  
PHONE: 717-758-6004

Edward S. Glick & Linda K. Glick Auctioneers Robert E. Martin & Son & Frank L. Steller

SAT MAY 26 11 A.M. Consignment Horse Sale at Keister's Middleburg Auction Sales, Inc Rt 522 3 miles East of Middleburg, 5 miles West of Selinsgrove, Pa Don & Walt Keister, Owners Larry Long, Auctioneer

SAT MAY 26 10 A.M. Annual Spring Heifer Sale at New Holland Sales Stables, Inc., New Holland, Pa For more information contact Abe Diffenbach or Norm Kolb

SAT MAY 26 - 10 A.M. Public Sale of Farm Equipment, Tools, Trucks, Race Horses, Carts, Tack located in Adams County, on Route 30, New Oxford, Pa Square turn North at C C N B Bank 2 miles New Chester Road Sale by Mrs Pauline Milhimes, Owner, C R Slaybaugh, Auctioneer

SAT MAY 26 - 10 A.M. Consignment Auction Bethel, Pa Ebersole & Shoop Auctioneers, 930 Cornwall Rd., Lebanon, Pa 17042 717-273-5408

SAT MAY 26 - Grade Heifer sale at New Holland Sales Stables New Holland, PA

SAT MAY 26 - 10 A.M. Public Sale Antiques & Collectibles,

Coins, Household Items Farm Machinery Located approximately 1 1/2 North of Gratz Pa on the Gratz to Erdman Rd Estate of Tessie V Miller Anna Lebo, Mary C Troxell Matilda Bordner, Executrices Lee D Dockey Auctioneer

SAT MAY 26 9 00 A.M. Public Sale of Real Estate, Bank Stock, Antiques, Household Goods and Tools of the Olevia Bahn Hartman Estate Located about 2 miles west of Exit 3, Loganville Exit of Rt 83 and approx 1/2 mile south of Jacobus off Old Rt 111 along Beck Rd, in Springfield Twp York Co., PA Russell, Paul and Ruth Bartman Executors, Robert L Sechrist Auctioneer

SAT MAY 26 - 10 00 A.M. Public Sale of Real Estate, Antiques, Household Goods, Lots of Tools & Guns Located at 1624 Butter Road, Manheim Twp, Lanc Co., PA (take Rt 23 about 3 miles east of Lancaster or 1 block east of Eden traffic light, turn left, onto Butter Road) Sale by Mrs J Roy Brian Howard Shaub, Auctioneer

SAT MAY 26 - Public Sale of Valuable Real Estate Located at 322-324 Arch St in borough of Ephrata, Lanc Co., Pa Terms by Irvin C & Mary K Messner Auctioneers Lester O Weaver & Barry D Wanger

## Lancaster Farming, Saturday, May 19 1979-157

SAT MAY 26 - 9 30 A.M. Public Sale of 130 acre Farm, Farm Machinery, Vehicles, Household Goods and Antiques Located at Rt 2, Hummelstown, Dauphin Co., PA Turn south off Rt 22 onto Rt 39 for 1 1/2 miles to Hanoverdale Church of the Brethren and turn left onto Devonshire Rd and continue to farm or Take Rt 39 North from Hershey to the church and turn right continue to the farm, approx 3 miles North of Hershey, 12 miles east of Harrisburg or 3 miles south of I-81 Conditions by Lee K Sauffley Harry H Bachman Auctioneer

SAT MAY 26 - 9 30 A.M. Public Sale of Antiques & Collectibles Held at 606 E Grand Ave, Tower City, PA (Rt. 209) next to the Post Office, on the premises of the Former Hawk Pharmacy Ellen L Rose Owner George N Deibert Auctioneer

SAT MAY 26 - 10 00 A.M. Public Sale of Approx 20-25 Tractors Located from Rt 11 at Inwood, WV, turn east on Rt 51, travel 3 miles to Ellinger's Market (formerly Haines') Turn right, 2 miles to sale, OR from Charles Town, WV take Rt 51 west to Ellingers, turn left, .2 mile to sale Edgar Bohrer Sale Manager

SAT MAY 26 - 10.00 A.M. Public Sale of Valuable Antiques, Household Furniture,

Horse Drawn Vehicles, Harness, Tack, Car, Etc. Located on the premises at 1160 Broadway in the Borough of Hanover, York Co., PA. Sale for Harry E Bechtel Estate. R E Kehr and Assoc. Auctioneers.

SAT. MAY 26 - 10.00 A.M. Public Sale of Farm Machinery. Located on Rt 247, 15 miles northeast of Scranton, 3 miles south of Finch Hill, Take Tompkinsville Exit off Rt. 81 and watch for Auction arrows Mrs. John Dutko Owner, Gerald Pennay Auctioneer

MON. MAY 28 & TUES. MAY 29 - Large Two Day Sale of Farm Equipment at Marion, PA Ralph W Horst, Sale Manager

TUES MAY 29 - 10:00 A.M. Public Auction of Farm and Orchard Equipment, Truck, ATV, located about 4 miles north of Krumsville and Rt. 22, along Rt 737 in the village of Stony Run, Berks Co., PA Sale by Harvey & Annie Miller. Ralph Zettlemoyer Auctioneer

THURS MAY 31 - 6 P.M. Public Sale of Real Estate, Household Items, Antiques & Collectibles. Located 2 1/2 miles south of Elizabethtown, Pa., 2 miles South off Rt 225. Turn at Mountain House Tavern Watch for sale signs along Rt. 225 day of sale. Estate of Grace A Woland. Lee D. Dockey Auctioneer.

## AUCTION

FOR: EST. OF CLEO M. SMITH  
Century Acre Farm  
County Line Road  
Line Lexington, PA

**THURSDAY, MAY 31**  
9:00 A.M.

Will sell Farm Machinery at 10 a.m. w/2 Auctioneers selling.

NOTE - This auction will be a bit different. Furniture for every room of the house in various conditions. Many collectors' items & unusual things that will not appear in the following ad.

FARM MACHINERY will include 3 Tractors - 240 Farmall, 800 Ford, 8-N Ford, attachments for each tractor, Rotary Mower, Grain Drill, New Holland Baler, Scrap Metal & Junk Cars. ANTIQUES, COLLECTIBLES & OTHER FURNISHINGS - Player Grand Piano, nice quantity of Oak Furniture, Oil Painting, 5 Marble Busts. Don't Miss It!

TERMS - CASH Request Handbill. LUNCH

**SANFORD A. ALDERFER, INC.**  
Real Estate Brokers And Auctioneers  
Harleysville, Pa. - 723-1171

## PUBLIC SALE

**FARM MACHINERY - TRUCK - CARS - HORSE TRAILER**

The undersigned, having rented farm and discontinuing farming, will sell at public sale to be held at REDDING AUCTION SERVICE located 3 miles North of Gettysburg on Route 34 on

**WEDNESDAY, MAY 23**

7:00 P.M.

TRUCK - 1978 Ford F250, 4 wheel drive, auto. trans., fully equipped, 16.5x12 tires, heavy duty suspension, 352 engine, trailer package w/Reese hitch, color gray (This truck in new condition, 11,000 miles).

TRAILER - 1979 Hale 2 horse, tandem axle trailer w/dressing room.

CARS - 1974 Oldsmobile Toronado 54,000 miles, fully equipped w/air condition, nice condition. 1974 Subaru 54,000 miles w/air condition.

MACHINERY - International Harvester Mod. 656 hydrostatic drive, 3 pt. live power, 540 shaft, 16.5-30 rears, AM-FM radio (gas); New Holland 1469 self-propelled haybine, Ford water cooled engine, flotation tires, cab w/AM-FM radio; New Holland Mod. 282 pick-up baler w/kicker; 3 bale wagons all w/8 ton chassis, telescope tongues, flotation tires, 16 ft. bale bodies; New Holland Mod. 131-32 ft. transport hay conveyor w/3/4 hp. motor; Int. Mod. 14 Rollobar hay rake; J.D. Mod. GL grassland drill; dbl. roll cultipacker.

TERMS: CASH

Owner,  
**PAUL V. DAVIS, II**  
R.D. #2  
Gettysburg, Pa.

C. David Redding  
Auctioneer  
Rt. 6, Gettysburg, Pa.  
Ph.: 717-334-6941 or 334-6598

## PUBLIC SALE

**OF VALUABLE ANTIQUES,  
HOUSEHOLD FURNITURE,  
HORSE DRAWN VEHICLES,  
HARNESS, TACK, CAR, ETC.**  
**SATURDAY, MAY 26**

AT 10:00 A.M.

The undersigned Executors of the Harry E. Bechtel Estate will sell at public sale on the premises located at 1160 Broadway in the Borough of Hanover, York County, Pennsylvania, the following:

**ANTIQUES, HOUSEHOLD FURNITURE,  
CARS, ETC.**

Concerta musical box 12 inches by 27 inches with 6 cylinders patented 1883 Label Ideal Piccolo; Grandfathers clock in pine case 84 inches tall by R. Whiting Winchester, nice organ made by Julius Organ Company, cherry chest of drawers with glass knobs, marble top wash stand, marble top stand, slant top desk, mahogany desk and chair, 6 piece mahogany bedroom suite, Bradford refrigerator with top freezer, Quality 40 inch gas range, Zenith black and white television set, softwood blanket chest, 3 piece living room suite, 7 piece breakfast set, library table, new Queen treadle sewing machine, pair of sewing tables, 3 wall mirrors, aluminum single rollaway bed, piano bench, 3 tier utility metal cart, clothes racks, utility cabinet, pair of upholstered chairs, 11 by 16 rug and pad, 9 by 9 rug and pad, 2 floor lamps, 2 pairs of table lamps, several picture frames, metal double bed with spring and mattress, floor fan, throw rugs, lot of ornaments, occasional chairs, coffee grinder, miscellaneous china, glassware, utensils, etc., outdoor metal chairs, wooden rockers, etc., 1949 Pontiac 4 door sedan with standard shift, in good condition.

**HORSE DRAWN VEHICLES,  
HARNESS, TACK, ETC.**

2 seat Santa Claus sleigh used in Hanover parades for a number of years, 2 seat victoria in excellent condition, Thrush and Stough Jenny Lind with brass hubs, rubber tires - made in Shippensburg, Pennsylvania, square back sleigh, round back sleigh, buggy poles, buggy shafts, several sets of single and double driving harnesses with brass and nickel trim, several sets of housings, pair of shaft bells, set of collar bells, 2 sets of brass sleigh bells, several pairs of saddle bags, 2 pairs of carriage lamps, 2 pairs of buggy lamps, 3 western saddles, several western bridles, several McClellan saddles, bridles, reins, lines, hames, collars, side saddle, saddle racks, saddle pads, halters, miscellaneous tack, parts for buggies, horse shoeing outfit, wagon jack, single trees, feed buckets, feed barrels, 4 reindeer made of plywood, 2 wooden planes, wooden rakes, 4 lanterns, electric motor with buffer, miscellaneous lumber, miscellaneous hand tools, lawn and garden tools, 2 tow chains - 22 feet and 24 feet lo 4 foot step ladder, metal wheelbarrow and many other items not listed.

**HARRY E. BECHTEL Estate**  
**MORGAN H. SMITH and**  
**WESLEY J. SMITH, Executors**

Terms: Cash  
R. E. Kehr and Associates,  
Auctioneers

Lunch Stand At Sale