



Pearls were once thought to be raindrops swallowed by oysters.

## PUBLIC SALE

OF 17 ACRE FARM  
To Be Held  
**SATURDAY, JUNE 9**  
AT 2 P.M.

Located 3 miles Northwest of Manheim, West of Rt. 72, midway between Ruhl's U. M. Church & Rt. 72, along the Elizabethtown Rd., Rapho Twp., Lanc. Co., Pa.

### 18 ACRES

more or less, with 12 acres under cultivation and 5 acres in meadow and wooded area. Also, a pond in meadow. 2½ STORY FRAME DWELLING with Asbestos Siding containing 4 rooms & bath on first floor and 3 rooms on second floor. Summer house and laundry room attached to first floor.

FRAME BARN, cement block storage building, and a 2-car Garage.

This farm is at a nice location — setting back off the road, with 627 ft. road frontage along the E'town Rd.

Anyone interested in viewing property before day of sale may do so Saturday, May 19 & 26 from 12 - 4 p.m. or by calling 665-4089 for an appointment.

Sale by:

**VALERIA H. KAHLEY**  
**NAOMI RUDYK**  
**ALVIN W. KAHLEY**  
Richard Martin, Attorney  
K. L. Shirk, Jr., Attorney

Auctioneer:

Rufus Geib (665-4136)

## PUBLIC SALE

**SATURDAY, MAY 26**

STARTING AT 8:30 A.M.

Located 6 miles north of Carlisle. Follow Rt. 74 north to Milwick Rd. Watch for signs.

Will sell the following:

One piece pine corner cupboard, oval glass china closet with claw feet, good oak dry sink, oak buffet, oak sideboard, oak bedroom suite, oak clothes cupboard, washstands, victrola, organ stool, chest of drawers, bureaus, flat trunks, plank & cane seated chairs, child's cane rocker, butter churn, doughtray, large coffee grinder, mantle & school clocks, wooden washtub, iron bank iron toy truck, Tiffany lamp, other kerosene lights, Carlisle & Harrisburg bottles, Harrisburg jug, other ugs; all size crocks, 300 jars some dated, granite ware, blue & white pattern bowl, market baskets & many others, sleigh bells, chimes, & other antique bells, large gold leaf mirror, old picture frames & albums, broad axe, Mortise axe, cherry boy & girl statues, stereoscope w/cards, copper kettle.

### "200 OLD BOOKS"

1872 Atlas of Cumberland Co., 1899 Atlas of the Philippine Islands, 1846 History Book of Dauphin, Cumberland, Franklin, Bedford, Adams & Perry Cos., History of Cumberland Valley. 100 Hunter, Trader, Trapper Magazines. Old Post Cards, Stamps, Old Scales.

### "GUNS"

44 Cal. Hopkins, Allen XL # Revolver (Barrel Hexed inside), Ithaca 22.

### "COINS"

Silver dollars, Halves, Quarters, & Pluto Dimes, Gold Elgin Pocket Watch.

### "GLASSWARE"

Some Carnival, Depression, Pressed Glass, Child's Gold ring China set. Many, many other dishes & small items. Pewter ware, 3 old wash bowl & pitcher sets.

Two good sleighs, 2 horse wagon.

### POULTRY EQUIPMENT

Chicken feeders, nests, & water fountains.

### BUTCHER EQUIPMENT

Two meat grinders, sausage stuffer, & other butcher items.

Many, many items not listed.

Sale order — Small Items At 8:30 — Guns, Watch & Coins approx. 12:30 — Poultry & Butcher Equipment will follow furniture.

Inspection: Day of Sale.

Not Responsible for Accidents.

Lunch Stand

Owners,

**J. ELLSWORTH & MARIE WICKARD**

R.D. 3, Carlisle, Pa. 17013

Phone 243-4302

Auctioneers

Art Rife & Dennis Brownawell

Clerks

Wickard & Son

## WHAT'S NEW



### LIVESTOCK PROD

A new rechargeable livestock prod with modular design features has been introduced by Stinger Sales Corporation of Denver, Colo.

Called the Stinger, the new livestock prod can be recharged on regular household current or 12 volt DC. This rechargeable feature eliminates the need for expensive battery replacement and minimizes the weight factor, says the manufacturer.

The rechargeable power pack, located in the lower end of the handle, is replaceable. For heavy users, an extra power pack can be left charging or a charged power pack kept handy for snap in power when it's needed.

The unit is of solid state modular construction. The sting-tip module delivers 10,000 volts and can be replaced at the turn of a screwdriver. Modular

features also include a replaceable barrel.

The tough ABS and PVC plastic casing allows the Stinger prod to stand up to heavy abuse. Its moisture proof sealed construction and silver contact points inhibit corrosion problems, adding to the life and dependability of the Stinger prod.

According to a company spokesman, the Stinger has

undergone three and one half years of field testing and design modifications.

The Stinger livestock prod carries a six month limited warranty and is being marketed through distributors and dealers throughout the world. For further information write: Stinger Sales Corp., P.O. Box 17207 Terminal Annex, Denver, Colo. 80217, Phone 303/892-0500.

## Berks Co. FFA land judging results posted

ELVERSON — On Tuesday May 8, six Twin Valley FFA members participated in the Berks County FFA Land Judging Contest at Conrad Weiser High School. Twin Valley participants were Lewis Kohl, Steve Kearns, Steve Snyder, Tom Snyder, Mike Williams, and Eric Wright.

Twin Valley Students who placed were Steve Snyder

5th, and Eric Wright 10th. The contest was won by Larry Grumbine of Tulpehocken. In team placings, Twin Valley's team (the 5th highest placing individuals) finished third behind Conrad Weiser and Kutztown. Dwayne Pusher, Berks County soil conservationist served as the official for the contest.

## FARMERSVILLE AUCTION

TUESDAY, MAY 22, 1979

6:00 P.M.

In Farmersville, 3 mi. East of Brownstown, Lanc. Co., Pa.

### GENERAL HOUSEHOLD GOODS

Maple dinette set; Early American living room suite; hexagon end tables and coffee table; floor model stereo w/tape deck; single bed, complete; 3 bedroom suites; table lamps; glider; love seat w/matching chair; G.E. refrigerator; old blanket chest; dishes; oak shelf clock; pewter pieces; small items; etc.

We sell on Commission.

Call: **JOHN J. RUTT**

717-354-5095

MRS. JOHN DUTKO

## FARM MACHINERY AUCTION

Located on Rt. 247, 15 miles Northeast of Scranton, 3 miles South of Finch Hill, PA, take Tompkinsville Exit off Rt. 81 and watch for Auction Arrows.

**SATURDAY, MAY 26**

10:00 A.M.  
MACHINERY

Int. 400 Hyd. diesel tractor with amplifier; MM "Z" tractor; #46 Int. baler; IH rake; like new 477 NH haybine; McCormick crimper; 24 ft. Mulkey grain elevator; NH lime spreader; PTO NI Manure spreader; dual wheel hay trailer; steel floor hay wagon; 2 bottom trailer plow; harrow; disc; 2 Clay barn cleaners with 175 ft. & 150 ft. chains; elec. compressor; portable tank; feed cart; grinders; pipe vice; pipe cutter; bench vices; wheel barrow, vacuum pump; barn fan; S.S. double vat sink; S.S. wash bowl; McCullough chain saw; 52 gal. hot water heater; 4 DeLaval milkers; 8 can side cooler; 4 can cooler; 175-gal. gas tank; fence post; lawn mower; brooder stove; stanchions and stanchion cups; buzz saw mangle; grease guns; gas cans; fence control; elec. motors; other hand tools; nuts; bolts; forks; shovels; bars; ladders, etc.

### ANTIQUES AND OLD FARM ITEMS

1932 1 ton Ford dump truck; 1949 White truck (as is); 1929 McCormick Deering tractor on rubber; 1955 Int. travel-all truck; water cooled gas engine; reaper; grain drill; corn planter; cultivator; milk cans; platform scales; old drill press; 2 man saw; harness & harness parts; other old items.

### OTHER

Pittston kitchen range; T-back chairs; desk chair; Frigidaire refrigerator.

Terms: Cash or Good Check. Tent. Lunch.

Owner

**MRS. JOHN DUTKO**

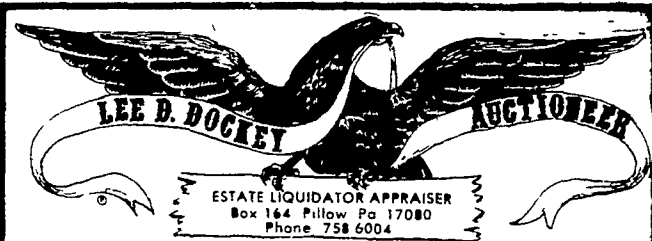
RD, Jenmyn, PA

Auctioneer

Gerald R. Pennay

Rd. 2, Kingsley, PA

717-289-4533



## PUBLIC SALE

**SATURDAY, MAY 26**

10:00 A.M.

Located approximately 1½ miles north of Gratz, Pennsylvania on the Gratz to Erdman Road.

### ANTIQUES & COLLECTIBLES

Dry Sink; 3-Pc. Oak Bedroom Suite (high bed); Gray Enamel and Chrome Prizer Regal Kitchen Stove; Round Oak Table; Oak Sideboard; Spool Rope Bed; 3-Pc. Oak Bedroom Suite; 4-Legged Drop Leaf Table with Drawer and Splay Legs; Flour Chest; 2 Farm Tables (drawers missing); Square Oak Table; Flat Top Trunk; Oak Bureau; Oak Morris Chair; Oak Bed; Pressed Back Rocker; Library Table; Gold Leaf Mirror; 5 Pressed Back Chairs; Oak Framed Couch; 6 Oak Chairs; 2 Plank Bottom Chairs; Lg. Porch Bench; Wooden Schnitz Dryers; Butter Churn; 4 Quilts; Assortment of Patchwork Comforts; Pocket Watch; Coffee Grinder; 2 Butter Molds; Oak Gingerbread Mantel Clock; Tin Toy Wind-Up Train; Assortment of Crocks; Butcher Tools; Slaw Cutter with Heart Cut-Out Handle; Early Fireplace Bracket with Crank Handle; German Mother's Medal Dated 1938; 1911 Metal's Driver License; Strip Carpet; Jugs; Rayo Lamp; Sadirons; 1915 License Plate; Assortment of Depression and Pressed Glass; Etc.

### COINS

Silver Dollars, Indian Head Pennies, Quarters, Silver, Etc.

### HOUSEHOLD ITEMS

Frigidaire Electric Stove; Frigidaire Refrigerator; Maytag Wringer Washer; Siegler Kerosene Oil Room Heater; 3-Pc. Living Room Suite; Zenith Color TV; 2 Coal Room Heatrolas; Butcher Kettle Stove; Sausage Stuffer; Meat Grinder; Kerosene Stove; Selection of New and Used Braided Rugs; Selection of Pots, Pans and Dishes; Etc.

### FARM MACHINERY

Ferguson 30 Tractor and Scoop with Bucket and Fork (not mounted); New Idea Corn Stalk Shredder; New Holland 880 Silage Harvester-Corn Header, 2-R. T-50 International Baler with Motor; International Farmall "A" with Reaper; Oliver model 33 Combine, Self-Propelled; MM Corn Picker and Sheller; 5-Section International Harrow; New Idea Manure Spreader on Rubber; 3-Bottom 12" International New Genius; Oliver 14" 4-Bottom Plow; 200 Gallon Weed Sprayer on Rubber; John Deere Hammermill; International Hammermill; International Grain Box; Chisel Plow with 3-Pt. Hook-Up; (3) Holland Tomato Transplanters; Lime Box Spreader; Bed Shaper; 14' Disk with Tank Sprayer; 6" Auger, 35' with Motor; Cutaway-Disk - 10'.

### SALE WILL START WITH FARM MACHINERY

TERMS: CASH! Personal checks accepted only from persons having an established account with Auctioneer.

### ESTATE OF TESSIE V. MILLER

Anna Lebo, Mary C. Troxell,  
Matilda Bordner, Executrices