

Lancaster Co. DHIA

(Continued from Page 128)

OWNER BREED	NO. COWS	% DAYS IN MILK	LBS. MILK	% FAT	LBS. FAT	
Richard W. Barge AWT9066 GrH	6-4	305	15,902	4.1	657	
Sangrey Bros. Penucia GrH	8-7	305	18,059	3.6	656	
133 Jerr RH	5-6	305	19,927	3.3	652	
Paul B. Zimmerman Jean RH	3-6	305	14,562	4.5	655	
Graywood Farms '85 GrH	3-5	305	16,208	4.0	652	
Stephen J. Stoltzfus Sally GrH	7-8	305	18,471	3.5	650	
Christian Zook R&GrH	40	44.2	92.7	61.3	3.8	2.31
Ephraim D. Riehl Jr. R&GrH	27	26.0	90.0	56.6	4.1	2.30
Richard N. Sauder R&GrH	26	32.0	98.2	56.9	3.8	2.19
Richard N. Sauder R&GrH	27	37.7	83.9	51.9	4.2	2.17
J. Wilmer Conrad R&GrH	27	37.7	83.9	51.9	4.2	2.17
Paul B. Zimmerman RH	31	40.4	88.5	52.9	4.1	2.15

Donald R. Bare R&GrH	32	59.9	93.8	54.6	3.9	2.15
John Z. Beiler RH	31	42.0	98.1	66.6	3.2	2.15
Mervin Sauder R&GrH	29	38.3	90.1	54.0	4.0	2.15
Clarence W. Shirk R&GrH	35	24.5	93.0	59.3	3.6	2.15
Robert H. Kauffman R&GrH	42	46.6	90.9	53.9	3.9	2.11
Naaman W. Stoltzfus RH	32	30.4	87.2	54.9	3.8	2.11
John M. Harnish R&GrH	28	134.6	92.0	58.4	3.6	2.10
Robert F. & Joan B. Book R&GrH	32	65.4	96.0	60.2	3.5	2.10
Tritown Farm RH	32	33.0	88.0	57.5	3.7	2.10
Ivan M. Hursh R&GrH	35	42.8	88.1	54.0	3.9	2.09
Earl N. Landis R&GrH	28	49.2	95.4	57.4	3.6	2.09
Earl R. Martin R&GrH	27	48.0	95.2	49.1	4.2	2.08
Allen Lee Stoltzfus RH	30	32.2	91.4	57.0	3.6	2.08
Paul D. Welk R&GrH	27	65.2	89.6	56.2	3.7	2.08
Donald M. Eckman R&GrH	32	47.2	94.4	56.6	3.7	2.07

Lancaster Farming, Saturday, May 19, 1979-129

Robert Kauffman Jr. R&GrH	27	88.9	89.6	53.5	3.9	2.07
Delmar & Susan Weaver R&GrH	28	46.3	91.4	58.7	3.5	2.07
William W. Absher RH	29	11.2	92.9	57.2	3.6	2.07
Melvin J. Martin RH	31	37.9	98.1	54.7	3.8	2.06
Abraham Shelly Jr. R&GrH	28	39.8	90.4	55.6	3.7	2.06
Melvin M. Groff R&GrH	30	27.3	99.5	52.1	3.9	2.05
Karl W. Herr Red & White	28	40.7	93.2	53.8	3.8	2.05
Jonas O. Sensenig R&GrH	29	38.0	94.0	56.0	3.6	2.04
Raymond & Louise Witmer R&GrH	32	64.6	91.6	42.8	4.7	2.03
Allan R. Shoemaker RH	31	47.8	91.6	55.5	3.6	2.02
Ru Be Mar Farms RH	33	25.3	86.1	53.9	3.7	2.02
Samuel E. Beiler RH	7	48.9	82.9	58.7	3.4	2.02
Bennet Z. Lapp Mix	28	48.1	94.4	58.0	3.5	2.01
John M. Weaver & Son Mix	32	83.1	91.4	55.0	3.7	2.01
Curtis E. Akers RH	30	58.5	92.6	56.0	3.6	2.00
Omar S. Kauffman R&GrH	37	36.1	92.5	56.1	3.6	2.00
Samuel I. Esh RH	39	43.0	87.9	53.1	3.7	1.99
Nelson H. Wenger RH	28	42.2	82.7	51.8	3.8	1.99
Edgefield Farms R&GrH	29	91.3	88.8	52.4	3.8	1.98
Jacob Speicher Jr. R&GrH	26	34.0	93.6	53.9	3.7	1.98
Aaron K. Stoltzfus RH	27	26.9	89.1	52.1	3.8	1.97
C. Witmer Sherer RH	31	41.3	91.0	52.0	3.8	1.97
Aaron E. Beiler RH	30	21.0	92.7	56.2	3.5	1.97
K. D. & Else Linde R&GrH	31	47.6	85.6	40.9	4.8	1.95
Ben K. Stoltzfus R&GrH	34	36.1	89.7	50.3	3.9	1.95
Nelson R. Habecker R&GrH	23	65.0	92.0	51.6	3.8	1.95
Steve E. Stoltzfus Jr. R&GrH	31	43.1	90.1	47.3	4.1	1.94
Ivan S. Stoltzfus R&GrH	35	30.0	88.7	54.8	3.5	1.94
John E. Fisher R&GrH	46	41.2	92.7	55.5	3.5	1.95

(Turn to Page 130)

Get the time of your life from Farmers First Bank



Five styles available. Three with stopwatch function. Suggested retail price up to \$64.95.

Choose your free Timex LCD Watch when you finance* your next new or used car, van, or small pickup with Farmers First Bank. Offer available at any Farmers First office or these participating dealers.

Autohaus-Renault
Heritage Chevrolet
Huber Motor Co.

Hubley Motors
Keller Bros. Auto
John H. Steffy, Inc.

John W. Willwerth & Son
Wissler's American
J. B. Zartman Dodge, Inc.

This is a limited time offer. So hurry, and count the times of your life.

BRICKERVILLE, COLUMBIA AVENUE,
EPHRATA, EPHRATA NORTH, INTER-
COURSE, LANCASTER SHOPPING
CENTER, LINCOLN, LITITZ, MARI-
ETTA, NEFFSVILLE, PARK CITY,
PARK CITY MOTORBANK.

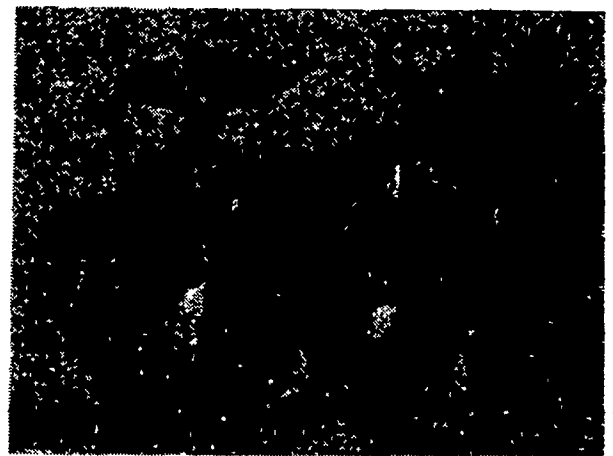
The People Bank

**FARMERS
FIRST BANK**

Member F.D.I.C.

* To qualify, amount financed must be minimum \$2,500 for minimum 24 months. Higher amounts and extended terms available. Subject to overall credit criteria. One watch per loan. Watch Styles Subject to Availability.

MORE DIG FOR YOUR DOLLAR WITH THE STEERING WHEEL LOADER



100 200

Smooth articulated steering provides fast cycle times, high productivity and low operator fatigue. Extremely maneuverable, it quickly moves in and out of the tightest situations.

Operating Weight — 3765 lbs. (1707 kg)
Operating Capacity — S.A.E. 1251 lbs (569 kg)
Pin Height at Maximum Lift — 96 in (2438 mm)
Engine - Gas — (Continental)
Net Horsepower — S.A.E. 28 at 3200 rpm
Overall Width Standard Tires — 48 in (1219 mm)

Swinger's modern design and long reach means high visibility and the ultimate in operator safety. The bucket easily reaches to the center of trenches and large trucks.

Operating Weight — 6811 lbs. (3089 kg)
Operating Capacity — S.A.E. 2005 lbs (909 kg)
Pin Height at Maximum Lift — 120 in (2920 mm)
Engine - Gas — (Ford)
Net Horsepower — S.A.E. 52 at 2400 rpm
Overall Width Standard Tires — 54 in (1372 mm)

For Information or Demonstration, Call:

Suburban Rentals & Sales, Inc.

1115C. Maugans Ave.
Hagerstown, Md. 21740
In Maryland (301) 791-2143
Outside Md. Toll Free 1-800-638-3660