

While some companies look for ways to build bins cheaper, we find ways to build bins *better*. Bins that will last longer, look nicer and protect grain better.

That's why we use only prime high-tensile steel. And precision form and punch each piece

No, we won't cut corners. Because in the long run, cutting corners would just cost you more money.

For more information about all our money-saving design features, just write for a copy of our latest catalog.

BROCK

Hershey Equipment Company, Inc.

**There are 10 ways
we could cut our price.
Any one of them will cost you.**



Reduce the 40-inch fill hole width to 24 inches.

Eliminate the exclusive fill hole collar seal.

Eliminate the circle of safety steps.

Eliminate the adjustable roof stiffener ring.

Eliminate 3-inch high roof ribs.

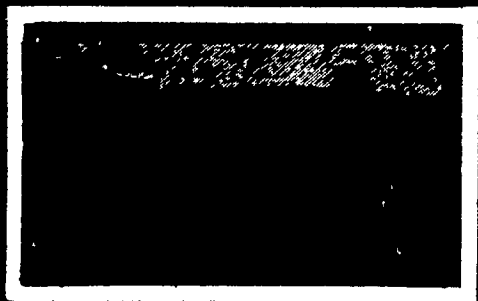
Make the roof pitch less than 35 degrees.

Eliminate the safety handrail by the manhole.

Eliminate the tab between each rafter.

Switch to a lighter gauge steel sidewall.

Use lower grade bin bolts and washers.



H
HERSHEY EQUIPMENT
COMPANY, INC.

SYCAMORE
INDUSTRIAL PARK
255 Plane Tree Drive,
Lancaster, PA. 17603
(717) 393-5807

Route 30 West
at the Centerville Exit

DESIGNERS OF QUALITY SYSTEMS FOR POULTRY, SWINE & GRAIN HANDLING.