

WHITE WASHING with DAIRY WHITE

- DRIES WHITE
- DOES NOT RUB OFF EASILY
- NO WET FLOORS
- IS COMPATIBLE WITH DISINFECTANT AND FLY SPRAYS
- WASHES OFF WINDOWS & PIPELINES EASILY.

ALSO BARN CLEANING SERVICE AVAILABLE WITH COMPRESSED AIR

To have your barn cleaned with air it will clean off dust, cob webs & lot of the old lime. This will keep your barn looking cleaner & whiter longer.

MAYNARD L. BEITZEL

Witmer, PA 17585 717-392-7227

Barn spraying our business, not a side-line
Spraying Since 1961

HIGH PRESSURE WASHING AND
DISINFECTING POULTRY HOUSES
AND VEAL PENS

Tent caterpillars beginning annual camp out

HARRISBURG

Homeowners should be on the lookout for Eastern tent caterpillars in their home tree plantings, according to State Agriculture Secretary Penrose Hallowell.

The Eastern tent caterpillar resides in the familiar silken nest which can be found in the branch forks and crotches of many Pennsylvania trees. The caterpillars devour large quantities of leaves and are important tree pests.

Entire colonies of caterpillars generally stay together until they pupate. Wherever they go, a fine thread of silk is spun, and

when populations are large, they can web and defoliate small trees.

Although Eastern tent caterpillars are not as spectacular a defoliator as the gypsy moth, it is still considered an important forest pest. Favorite hosts for the caterpillars are wild cherry, apple and crabapple, but they will also feed on a wide assortment of native and ornamental trees including ash, birch, gum, maple, oak, poplar, willow and fruit trees.

Entomologists with the Agriculture Department's Bureau of Plant Industry have suggested several measures to control the tent

caterpillars. Tents can be clipped off and burned at night, when all the caterpillars are in the nest. Branches can also be sprayed with either methoxychlor 50 per cent wettable or Sevin 50 per cent wettable powder at a rate of two tablespoons per gallon of water. The entire tree need not be sprayed. On small trees, egg masses can be removed in winter.

Eastern tent caterpillars overwinter as eggs which hatch in April of the following year. They feed in the daytime outside the nest, then return to it for shelter at night. When feeding is

completed, the caterpillars crawl down from the tree and search for places to spin cocoons such as fenceposts, tree trunks and bushes. The fully grown caterpillars are about two inches long, hairy and are black with a white stripe down the middle of the back and a row of bright blue spots on each side.

The adult moths are small drab brown moths about an inch long. The moths lay eggs on trees during the Summer, in masses about 3/4 inch long. The egg masses, each containing about 150-350 eggs, have a varnished appearance and can encircle smaller twigs.

Food price inflation fought

WASHINGTON, D.C. - Food shoppers are fighting food price inflation, according to USDA analyst Evelyn Kaitz. This finding is based on the results of three national surveys conducted by USDA in 1976, '77 and '78, on major food shoppers in about 1,400 U.S. households. The majority are fighting

food price inflation by always or almost always comparing prices, checking food ads and making out a food list before shopping, and reading ingredients on labels before purchasing a food product for the first time. Most shoppers admitted to comparing prices, and only about 15% said they seldom or never did. The surveys showed the

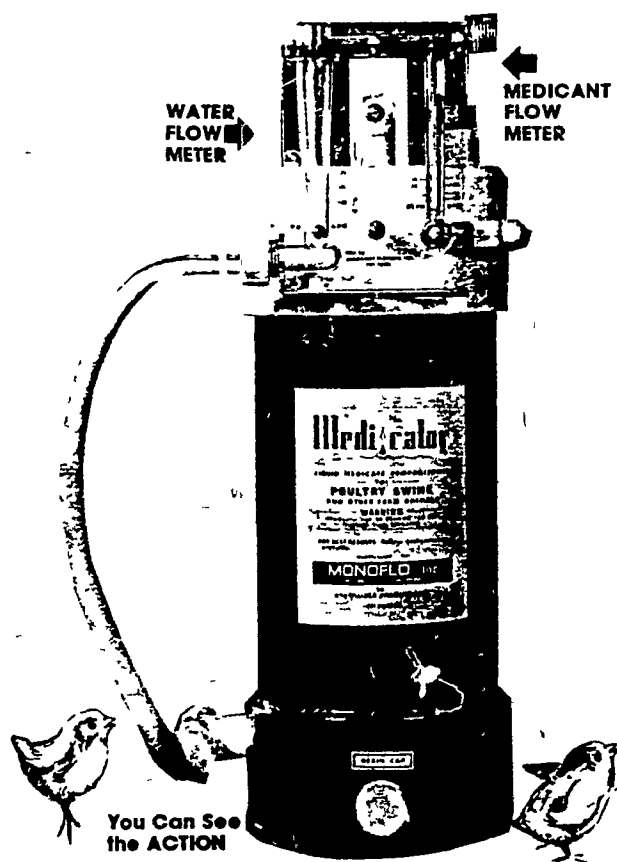
likelihood that a shopper would compare price increased with household size, but decreased with higher income.

The 1976 and 1977 surveys showed only about half the shoppers always or almost always read the labels for ingredients the first time they purchased a food product, but the number increased to almost 60

percent by the 1978 survey. Survey results indicated that the probability of reading ingredient labels increased with family size, education and income. The number of shoppers claiming to read the label for nutrition information the first time they bought a new product increased significantly during the three surveys, from 29 percent in 1976 to more than 40 percent in 1977 and 1978.

Medicator

MEDICANT PROPORTIONER



Capacity 2 gal. (7.5L) Medicant

AARON S. GROFF & SON

FARM & DAIRY STORE
RD 3 Ephrata, PA 17522 (Hinkletown) Ph 717-354-4631
Store Hours: 7 A.M. to 9 P.M.
Closed Tues., Wed & Sat at 5:30 P.M.



HESS' BUTCHER SHOP

2635 Willow Street Pike
Willow Street, PA

CUSTOM BUTCHERING

Beef cut, wrapped and frozen.
Dried beef and bologna.
WE ALSO SPECIALIZE IN U.S.D.A.
GRADED SIDES AND QUARTERS
FOR HOME FREEZER

Also Custom Butchering For Pork
• Pudding • Scrapple • Sausage

Call 717-464-3374

Loganville 4-H helps

at Pleasant Acres

LOGANVILLE — The Loganville 4-H Club will present a program for the residents at Pleasant Acres on Saturday, May 26.

The 4-H members will be sharing some of their entertaining talents to the guests. Anyone wishing to participate in the program should notify Crystal Shearer, Glen Rock. Club members attending should meet at the Springfield Township Building at 1:30, May 26.

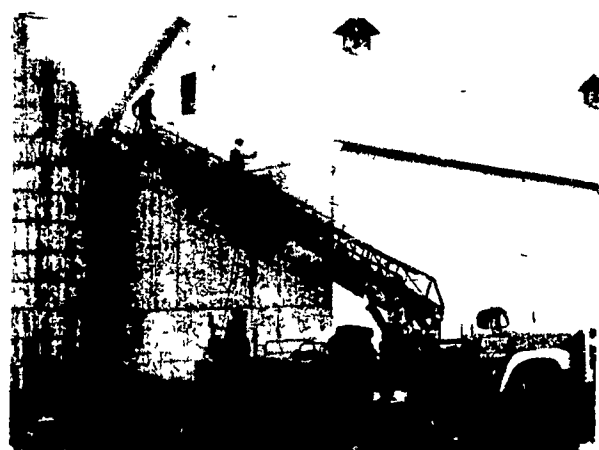
On Saturday, June 2, the 4-H club will plant a garden for

the residents at Pleasant View. The plants will be provided by local greenhouses. All those interested in helping should meet at the Springfield Township building at 12:30 p.m.



Sealcrete can paint your farm
buildings quickly and inexpensively...

Call for Free
estimate



HYDRAULIC AERIAL EQUIPMENT

Contact



Amos Gehman Salesman

Seal Crete, Inc.

RD2, Ephrata, PA
717-859-1127

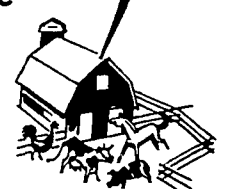
LIGHTNING IS STRIKING!

Are Your Buildings Safe?

LIGHTNING
RODS

Now Available

Let Us Estimate The
Cost Of Protecting
Your Buildings.
No Obligation...



DAVID S ELECTRIC
SERVICE
400 N Race St
Richland, PA 17087
717-866-7588 (Call
717-272-8580 Collect)

HAROLD C. FOSTER
Box 96A
Star Route
Huntingdon, PA 16652
814-643-0248
(Call Collect)