

**MISC. CONSTRUCTION**

Eager Beaver 1 ton roller - 1972 \$1750  
 Eager Beaver 2 Ton Vibratory-Hydrostatic Roller - 1975 \$3500  
 [2] Wood Chippers \$4000 each  
 1972 Ford F350 w/14' Swartz Rollback \$5500  
 Davis - DHS trencher - new \$15,500  
 Terex 72-41 Rubber Tired loader-cab-articulating \$19,500  
 1979 Int 4200 w/26' Jerr Dan Rollback \$49,500  
 [150] Backhoe & Loader Buckets  
 Forklift Forks

**FIELD CULTIVATORS, CHISEL PLOWS & HARROWS**

JD Field cultivator 19'  
 (2) JD Field cultivators w/wings, 20'-18"  
 Glenco 9' soilsaver  
 10' Athens chisel plow 3pt.

Kewanee 9' pull chisel plow  
 Ontario 12' wheel harrow  
 Ontario 16' wheel harrow w/wings

Ontario 20' wheel harrow w/wings  
 Brillion 16' wheel harrow w/wings  
 Kewanee 13' - 3 pt. harrow w/wings

**DISCS**

Wilbeck Offset 13'  
 JD Offset 10'  
 IH Offset 12'  
 (2) IH 480 w/wings, like new, 23'-18"  
 (2) IH 37 on wheels, like new, 10'-14'  
 (2) JD BW w/wings 16' & 20'

JD RW on wheels, like new 13'  
 JD KBA on wheels, like new 8'  
 JD KBA pull type, like new 11'  
 (4) Oliver Wheel Discs like new, 12' & 11'  
 Oliver w/wings 20'  
 White 253 w/wings, like new, 18'  
 (2) New Imco on wheels 9'6" & 7'

**DUALS**

[2] 18.4x38 Snap on - \$695  
 [2] 15.5x38 Axle - \$495  
 18.4x30 Snap on - \$695  
 [4] 18.4x34 Axle - \$695  
 [2] 14.9x38 Axle - \$595

15.5x38 Snap on - \$295  
 18.4x38 Axle - Factory Deere - \$995  
 18.4x38 Axle - \$795  
 18.4x34 Snap on - \$595

**CORN PLANTERS**

IH 6x30 air, liquid, clean  
 IH 6x40 air, liquid, clean  
 IH 4x air, dry, clean  
 JD 6x30 dry, (1250)  
 (2) IH 56, 4x, dry  
 JD 246 2x, 3pt.  
 JD 290 2x, pull

**TRACTORS COMING IN**

Long 460-4WD w/loader-Used  
 [3] Long 560-4WD-All tires the same size - Used  
 AC 185 Crop Hustler  
 AC 200  
 JD 5020 w/cab & duals

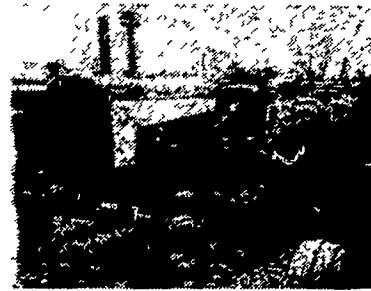
**NEW ROTARY MOWER SPECIALS**  
 5' 3 pt. **\$425**

**PLOWS**

IH 4x semi reset  
 (4) IH 5x semi reset  
 (5) IH 6x semi reset  
 White 6x18 semi reset  
 JD 6x16" semi  
 JD 5x16" semi  
 JD 5x18" semi  
 JD 3x16 pull  
 Oliver 5 or 6x18" semi  
 (2) Oliver 5 or 6x16" semi  
 IH 710 5x16 semi  
 IH 3x14" pull  
 IH 311 3x16" FH

**CRAWLER LOADERS**

Hough-Diesel \$2500  
 JD 440 - GM Diesel - ROPS \$4500  
 Case 310 - Diesel - 4 in-1 bucket \$5500  
 [5] Cat 933's \$5900-\$6750-\$6750-\$8750-\$9750  
 Case 450 \$6850  
 JD 350 - Diesel - New Bottom \$8500  
 CAT 933 - wide pad-wide bucket-42A series - swamp machine \$8500  
 Int 125C - ROPS - Powershift - 1971 \$13,500  
 Int 125 - ROPS - Ripper - 4 in-1 bucket - 1973 \$17,500  
 MF 500 - ROPS \$18,500  
 CAT 931 - 1974-ROPS-Powershift-Pedal Steer \$24,500  
 CAT 941 - 1969-Powershift-Pedal Steer-Cab-New Bottom \$24,500



JD 730 Diesel - WF - 3 Pt. \$3500



1979 Chevy Silverado 4WD Pickup  
 Air - PS - PB - Auto - Dual Tanks  
 Power Window - AM & FM & 40 Channel CB - Tilt - Cruise - Much More - 1/2 ton & 3/4 ton - Both Under 10,000 Miles \$8850 to \$9250



1972 Chevy C60 - 4 & 2 - PS - 14' Double Piston Dump - Air Brakes \$6900



1962 Ford - 4 & 2 - 16' Dump Bed \$2900



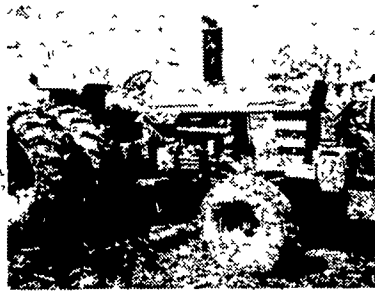
1973 Ford C900 - 22' Bed - PS Air Brakes - 5 & 2 - Air Conditioned \$8500



1978 Chevy 4WD - Scotsdale - PS PB - Auto - 5000 Miles - Reg. Gas \$6750



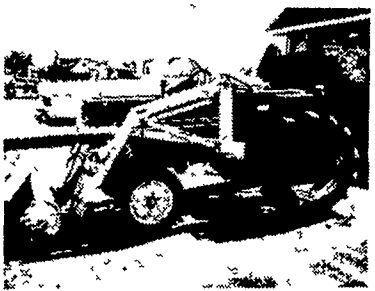
Ford 9600 - 1 New Tire \$8900



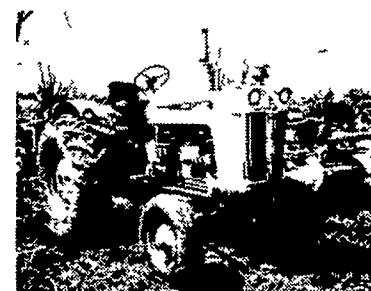
MF 1130 - Duals Weights - 1970 \$7500



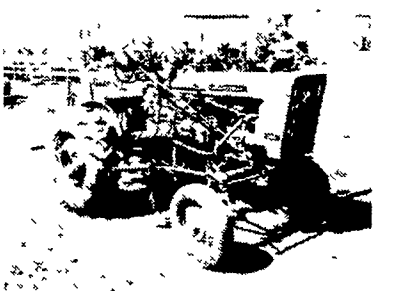
Farmall 1206 - Cab - Very Clean \$9000



INT. 284 w/Loader, 170 hours, 3 pt., remote cylinder valve, weights, New Condition \$5500



Case 930 Standard - Clean \$4000



Int. 140 w/Cult. - FH \$3500



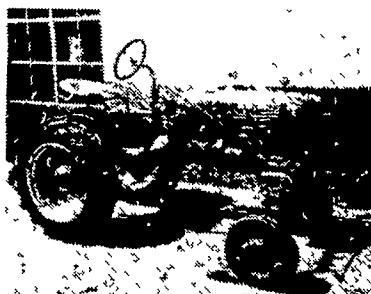
AC 190XT - Very Clean \$7500



Ford NAA \$1650



Oliver 1900 - Cab - GM Diesel \$5500



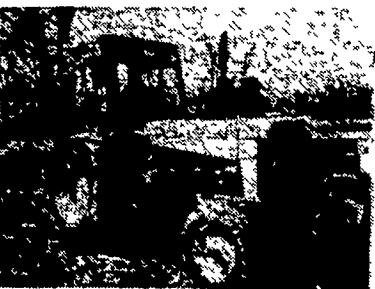
Farmall Cub New Paint \$1900



Farmall 706 Diesel Tricycle \$3900



AC 190XT - Diesel - 3 Pt \$5500



JD 830 - Cab - PTO - Hydraulics \$3950



JD 820 - Cab - PTO - Hydraulics \$3950



JD 820 - PTO - Hydraulics Choice of "2" \$3950



MF 1080 - Cab \$7500

FOR MORE WENGERS EQUIPMENT VALUES, TURN THE PAGE



**WENGER'S INC.**



HOURS:  
 Mon. thru Fri. 7:30 - 5:00  
 Sat. Mach. Dept. 7:30 - 3:00  
 Parts Dept. 7:30 - Noon

South Race St., Myerstown, PA 17067, just off Route 501 and 422 in Myerstown

PHONE: Days 717-866-2135, Nights 717-866-7147 OR 717-273-9089