

FARM EQUIPMENT

VERMEER

USED EQUIPMENT

Vermeer 605C baler
(2) Vermeer 605D balers
IH hydraulic rake
479 NH haybine

TRIPLE H FARM

Clifford Holloway
Rt. 1,
Peach Bottom, PA 17563
717-548-2640

FARM EQUIPMENT

TRACTOR & MOTOR REPAIRS

Over 20 years experience with Ford tractors and equipment.

Shop & Road Service
Pickup and Delivery
WALT STIVELY, JR.

Springville Road
Quarryville, RD3
Phone: 717-786-2252

FARM EQUIPMENT

For Sale - Case 930 Comfort King, standard tread. 717-464-2778

For Sale - Ford 8N Tractor, excellent condition, \$1800. 301-829-0271

FOR SALE

MF 711 Skid Loader, good condition with ROPS. 717-733-9644

FARM EQUIPMENT

PATZ SALES & SERVICE

SEE US FOR

- Barn Cleaners
- Silo Unloaders
- Tank Spreaders
- Conveyors and Feeders

LANDIS & ESHENSHADE

RD #2, Box 233
Quarryville, Pa.
Call Jim at
786-4158

FARM EQUIPMENT



NEW CASE 1210 TRACTOR
Power Shift
\$11,500
Cash Sale

New Owatonna Windrower, Used about 25 to 50 acres.

Roterra 12' used about 50 acres, less than 6 mos. old

IHC 203 & 205 Combines w/13' grain heads

C. & P. FULTZ EQUIPMENT

RD 1 Spring Mills, PA
(814) 422-8807,
Ask for Paul

FARM EQUIPMENT

For Sale

JD 430 WFE tractor
JD 2, 3, 4 btm. plows
JD 24T baler with #2 ej.
Case baler
JD 483 mower conditioner
JD 93 pt. mower
JD 3 pt. 246 planter, 2 row
JD 1440 no-till planter, 4 row w/insect. w/liq. or dry fert.

NEW
JD 1440 4 row planter w/insect. w/dry fert. less than dealer cost
1974 Ford 100 4 wd. truck

Liquidation Sale Will & Wagner, Inc.

Home Ph: 717-543-5685

Don't Forget We Have in Stock, Ready for Delivery

...THE ALL NEW IH MODEL 3588 4-WHEEL DRIVE ROW CROP TRACTOR



2 YEAR WARRANTY ON NEW IH TRACTORS

- Models 886 to 1586
- 4 Wh. Drive Models 4186 to 4786 — Special Prices & Rebate Available on These Models.

FULL LINE OF TILLAGE EQUIPMENT IN STOCK AND READY FOR DELIVERY!

AVAILABLE NOW!

LATE MODEL GLEANER M COMBINE With 4 Row Narrow Corn Head And 13' Grain Platform ... Low Hours!

USED EQUIPMENT

TRACTORS:

AC 7060, Loaded - Coming In 213 Hours
AC 190 XT Diesel,
(2) IH Super "A" - with Mower
JD Cyclo A Tractor
IH 230
IH 350 D
IH 350 Gas
IH 504 Gas
IH 560 Gas
IH 560 Gas Standard
IH 1066 Diesel with Cab & Air
IH 766 Gas with wide Front End, 3 pt. Hitch
IH 424 **SOLD** with 2001 Loader
IH 500 C Loader
Oliver 1650 Diesel, engine overhauled
Oliver 60
Oliver 66
Oliver 70
MF 35 Gas Tractor with Loader
8N Ford
Farmall A with Cultivators & Equipment
Farmall H
2 Farmall Cubs
(2) Farmall M's 1 with Loader
VAC Case w/Blade & Mower \$1,100!
MM G1000 Vista, Real Nice!
IH 154 with mower

HAY EQUIPMENT:

Int. 990 Mower Conditioner, 9 ft - used \$3200!

Int. 990 Mower Conditioner, 9 ft. - New \$3800!
IH 435 Baler without Thrower, like new
Case 655 Self Propelled Windrower, 8 ft
Hesston 420 Self Propelled Windrower, 10 ft with cab & air
Sickle Bar Mower for JD A or B
Vicon 3 pt Hitch Disc Mower, like new
Gehl FH 84 Field Harvester with hay pickup & 1 row corn head
NH 611 Chopper with 1 row head & direct cut
NH 275 w/Thrower
NH 266 Stalk Shredder Attach
(2) IH 550 Chopper w/2 row narrow head & pick up head
Brady 2-Row Shredder
IH No 50 Shredder, 4 Row
JD 15 Flail Chopper

TILLAGE:

Bush Hog 5 Shank Subsoiler
MF 4 bot. 14" 3 pt. hitch
Oliver 6 Bot Regular Trip Plow
IH 411 4-Bot., Fast Hitch
IH 475 Disc Harrow, 11'6" - 7" spacing
IH 401 16 ft Trans Harrow
IH 401 Pull Type 12' Harrow
IH 480 12' Disc Harrow
Bush Hog 18' Wing Disc Harrow

JD 12' AW Disc Harrow
JD 3 Bot. 16" pull type plow
IH 55 2-Rank 11' chisel
IH 55 13' pull type chisel
IH 463 4 row Cultivator, fast hitch
Pittsburgh 4 row Cultivator, 3 pt hitch
JD 4 row wide cultivator, 3 pt hitch
JD 4 row narrow cultivator, 3 pt hitch
IH 315 **SOLD** Packer mulche

MISCELLANEOUS:

JD 694 6-Row Planter
(3) IH 400 Cyclo 4-Row Planters
IH 56 4 **SOLD** anter
NH 510 Spreader
NH 512 Spreader
Int 130 Spreader
Int. 175 Spreader with upper beater
Int 51 Forage Wagon
AC 13x7 Grain Drill
JD 15x7 Grain Drill, DD, combination
JD 15x7 Grain Drill, SD, combination
IH 510 21x7 Grain Drill, DD, combination
JD C380 Fertilizer Spreader, 3 pt
Century 200 Gal. Sprayer
2001 Loader for IH 424
NI loader for Farmall

MCCURDY GRAVITY BOXES AND RUNNING GEARS AND AUGERS IN STOCK!

JOHN BLUE IN STOCK

- 4 Ton Spreader
- 400 Gal. Sprayer
- PARTS IN STOCK!

WE HAVE STARLINE ROTO-SPREADERS IN STOCK!

NEED HAY EQUIPMENT?

Don't Buy Until You Check Our Special Prices And Factory Authorized Early-Order Rebates

ERB & HENRY EQUIP., INC.

New Berlinville, PA 19545
Ph: (215) 367-2169
Daily 7 to 5:30, Fri. till 9 Sat. till 4



SEE US FOR

- DeLaval Spreaders
- FMC Bean
- Butler Jamesway
- IH Parts
- SunFlower Disc Harrows
- MC Dryers & Equip.
- Artway Don Forage Wagons
- John Blue Sprayers & Equip.
- Starline Roto-Spreader

The Tractor Specialist sells more "up-time"



When the farmer is ready, his tractor had better be. That's one reason a Case dealer franchise makes extra good sense.

As a Case dealer, you're the Tractor Specialist. You sell and service the best in farm tractors. And you are backed by an industry first. Assured Availability. It means that, during warranty, if a tractor bought from you isn't ready to go you can offer your customer free use of a replacement. And Case will back you up. Proof that when a Case dealer needs help, we do something about it.

You could be planning a bright future as your area's Tractor Specialist. You could also consider our light construction equipment line. Write or call for full information on the Case dealer franchise.

Are you interested? Please contact **W.M. KIMBROUGH**

Dealer Development Manager
JI Case Company, P.O. Box 50128
Indianapolis, Indiana 46256;
or call collect
(317) 849-4770.

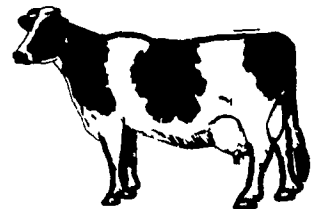
JI Case
A Tenneco Company
Agricultural Equipment Division



doing something about it.



WITH SPRING BRINGING ON A NEW LACTATION OF COWS...



NOW IS THE TIME TO CONSIDER THE BODMIN NU-PULSE MILKER!

The Single Hose Milker That Has No Pulsated Vacuum Line

- Sells for 30% less than any other Milker System.
- Save 70% in operation cost.
- Guaranteed 5000 cow milking per set of rubber liners (up to 9000 reported).
- Can be used on all milking systems giving you complete 360° visibility.
- Minimizes cow stress.
- Eliminates electrical pulsators, controllers and pulsation lines.
- Eliminates milker fall off and inflation creep.
- Milks at 10 to 12.5 inches of mercury vacuum at teat end.

★ This is an excellent Pail Milking Machine for Amish Use.

Sult's Refrigeration Service

Off Rt. 340, 1 Mile East of Intercourse on Hatville Rd.
RD 1 Gordonville, PA 17529

★ 24 HOUR SERVICE
PH: 717-768-8555

CLIP THIS COUPON & MAIL TO

SULT'S REFRIGERATION SERVICE
RD 1 Gordonville, PA 17529
Send More Information Have Representative Call

Name _____
Address _____
City _____
State _____ Zip _____
Phone _____