

# Livestock market and auction news

## Middleburg Auction

Middleburg, Pa.  
May 8, 1979

**CATTLE** 183. Compared with last Tuesday's market, slaughter steers \$1 to \$2 lower. Slaughter cows weak to \$2 lower. Few High Choice & Prime slaughter steers 76.35-76.75, Choice 72.75-76.00, Good 69.00-72.25, Standard 66.75-68.75, few Utility 64.75-67.00. Choice slaughter heifers 69.50-74.50, one at 77.50, few Good 65.60-68.25. Utility & Commercial slaughter cows 57.50-59.85, couple to 66.85, Cutters 56.75-59.35, few Canner & Low Cutter 53.50-56.75. Few Yield Grade #1 1200-1700 lbs. slaughter bulls 67.85-75.75; one yield grade #2 2200 lbs. at 65.00. Few Good 450-700 lbs. holstein heifers 79.50-92.50.

**CALVES** 130. Couple Prime vealers 134.00 and 137.00, Choice 119.00-132.00, few Good 110.00-118.00, few 90-110 lbs. 92.00-101.00, few 70-85 lbs. 85.00-90.00. Farm calves, holstein bulls 90-125 lbs. 100.00-155.00, few to 165.00; holstein heifers 85-150 lbs. 137.00-200.00.

**HOGS** 803. (Monday, May 7, 1979) (Tuesday, May 8, 1979 105 HOGS.). Barrows & sows 25 cents to \$1 higher. US No. 1-2 200-230 lbs. barrows & gilts 46.00-46.50, No. 1-3 190-250 lbs. 45.00-46.00, No. 2-3 200-270 lbs. 42.50-45.00. US No. 1-3 300-500 lbs. sows 36.75-41.75.

**FEEDER PIGS** 346. US No. 1-3 15-20 lbs. feeder pigs 24.00-30.00 per head, No. 1-3 20-35 lbs. 30.00-38.00, No. 1-3 35-50 lbs. 33.00-50.00, No. 1-3 50-65 lbs. 50.00-51.50, one lot 80 lbs. 67.00 per head.

**SHEEP** 1. No sales on offer.

Market courtesy of PDA.

## Four States Auction

Four States Livestock Sales, Inc.

Wednesday, May 2, 1979

**SLAUGHTER:** Fed Steers & Heifers - steady to \$1.00 lower; Choice 69.00-72.00; Good 65.00-68.00; Medium 64.00 down. Heifers - good run - Choice 68.00-72.50; Good 64.00-67.00; Medium 63.00 down. Cows very active steady to \$1.00 lower - High yield 61.50-64.00; Average 57.00-61.00; Big Middle 51.00-56.00; Shelly 53.00 down. Fat Bulls mostly steady - Good 70.00-75.25; Medium 63.00-69.00. Veal Calves \$3.00 to \$6.00 higher - Choice 120.00-140.00; Good 105.00-119.00; Medium 90.00-104.00; Farm Hrs. to 217.50; Farm Bulls to 141.00; Light & Weak 90.00 down. Lambs very active - Choice 75.00-78.00; Good 70.00-74.00; Medium to 69.00.

**STOCKER:** Steers - 300-550 lbs. Steady to \$1.00 Higher, few light wt. to 118.00; Choice 101.00-112.00; Good 90.00-100.00; Medium 80.00-89.00; Culls 79.00 down. Steers - 600-850 lbs.; Choice 85.00-90.00; Good 77.00-84.00; Medium 76.00 down. Heifers (all weights) - Choice 90.00-101.00; Good 80.00-89.00; Medium 79.00 down. Bulls - Choice 90.00-95.00; Good 80.00-89.00; Medium 79.00 down. Dairy Cows to 775.00. Springing Hrs. to 975.00. Pigs, Hd. \$4.00 lower - 20-30 lbs. 25.00-36.00; 40-60 lbs. 38.00-50.00. Slaughter Hogs

\$1.00 higher - 200-230 lbs. 45.00-46.00; 240-260 lbs. 44.00-45.00; 180-195 lbs. 43.00-44.00. Sows - 325-600 lbs. 35.00-39.75.

## G&M Market

Duncansville, Pa.  
May 7, 1979

Market reported steady.

**Dairy Cows** 650.00-1200.00.

**STEERS:** High Choice and Prime 74.00-75.85; Good to Choice 70.00-74.00; Standard to Good 66.00-70.00.

**HEIFERS:** High Choice and Prime 70.00-72.50; Good to Choice 66.00-70.00; Standard 62.00-66.00.

**FEEDERSTEERS:** Good to Choice 300 to 500 lbs. 85.00-95.00; 500 to 700 lbs. 70.00-80.00.

**BULLS:** 1000 to 1514 lbs. 66.00-73.75; 800 to 1000 lbs. 65.00-72.00.

**COWS:** High Choice to Prime 60.00-63.25, Individual 65.75; Good 58.00-60.00; Utility 56.00-58.00; Cutters 52.00-56.00; Cannors down to 51.00.

**CALVES:** High Choice 125.00-139.00; Good to Choice 115.00-125.00; Standard to Good 90.00-115.00.

Farm Calves Bulls 90 to 120 lbs. 100.00-154.00.

Farm Calves Heifers 90 to 120 lbs. 125.00-175.00.

**HOGS:** 200 to 240 lbs. 45.75-47.10; 190 to 270 lbs. 43.00-45.75.

**SOWS:** 38.00-44.00.

**BOARS:** 32.00-37.00.

Feeder Pigs 25 to 35 lbs. 25.00-35.00.

Feeder Pigs 35 to 50 lbs. 40.00-50.00.

**SHEEP:** 25.00-35.00.

## Dewart Auction

Dewart, Pa.  
May 7, 1979

**CATTLE** 167. Compared with last Monday's market, slaughter cows steady to \$1 lower. Few Choice slaughter steers 72.50-75.00, few Good 68.50-71.50, few Standard 65.00-70.75. Few Choice slaughter heifers 69.00-71.10, few Good 65.00-69.50, few Standard 63.75-67.75. Utility

& Commercial slaughter cows 58.50-64.10, Cutters 56.50-61.50, few Canner & Low Cutter 53.00-55.00, Shells down to 50.50. Few Good slaughter bullocks 67.35-71.85. Few Yield Grade #1-2 1230-1900 lbs. slaughter bulls 67.75-75.00. Few Choice 650-750 lbs. feeder steers 89.50-90.00, few Medium 500-700 lbs. 70.00-77.00; few Choice 400-675 lbs. feeder heifers 72.00-80.00.

**CALVES** 122. Couple Prime vealers 130.00 and 135.00, Choice 120.00-135.50, few Standard & Good 90-110 lbs. 96.00-100.00. Farm calves, holstein bulls 90-140 lbs. 105.00-140.00, few to 147.00; few holstein heifers 100-150 lbs. 145.00-182.50.

**HOGS** 554. Barrows & gilts strong to \$1 higher. US No. 1-2 195-240 lbs. barrows & gilts 46.00-47.00, one lot 47.35, No. 1-3 200-250 lbs. 44.75-46.00, No. 1-3 140-180 lbs. 42.00-43.50. US No. 1-3 300-450 lbs. sows 37.00-41.00, No. 2-3 400-575 lbs. 33.00-36.00. Boars 34.00-37.00.

**FEEDER PIGS** 163. US No. 1-3 20-35 lbs. feeder pigs 29.50-43.00 per head, No. 1-3 35-50 lbs. 40.00-48.50, No. 1-3 65-75 lbs. 50.00-53.00 per head.

**SHEEP** 22. Choice 80-95 lbs. spring slaughter lambs 75.00-76.50. Few Slaughter ewes 24.00-34.50.

## Martinsburg Auction

Martinsburg, Pa.  
May 7, 1979

**CATTLE** 182. Compared with last Monday's market, slaughter steers Choice 72.00-75.00, Good 68.00-71.50, Standard 65.50-70.00, Utility 61.50-64.00. Choice slaughter heifers 71.50-73.00, Good 65.00-68.00, Standard 62.00-65.00, Utility 55.00-58.00. Utility and Commercial slaughter cows 56.00-61.75, one at 64.75, Cutters 54.00-58.00, Canner and Low Cutters 52.00-56.00, Shells down to 48.00. Few Choice slaughter bullocks 71.00-74.00, Good 67.00-71.00, Standard 63.50-68.00, Utility

58.00-62.00. Yield Grade No. 1, 1400-1800 lbs. slaughter bulls 67.50-72.00; #2, 900-1600 lbs. 62.50-68.00. Medium and Good 350-500 lbs. feeder steers 60.00-100.00.

**CALVES** 185. Choice 110.00-145.00, Good 110.00-125.00, Standard and Good 90-100 lbs. 90.00-112.00, 70-90 lbs. 70.00-94.00. Farm Calves: Holstein bulls 90-100 lbs. 120.00-155.00; Holstein heifers 80-130 lbs. 130.00-200.00.

**HOGS** 361. US No. 1-2 200-240 lbs. barrows and gilts 45.75-47.00, No. 1-3 195-240 lbs. 44.50-46.00, No. 2-3 240-255 lbs. 43.00-45.00, No. 1-3 170-180 lbs. 37.00-42.00. US No. 1-3 300-500 lbs. sows 38.00-42.50. No. 2-3 300-600 lbs. 35.00-40.00. Boars 33.00-40.00.

**FEEDER PIGS** 4. Few US No. 1-3 20-35 lbs. feeder pigs 20.00-35.00 per head.

**SHEEP** 0. No sales on offer.

Market courtesy of PDA.

## Shenandoah Valley Livestock

Shenandoah Valley Livestock Sales, Inc.  
Harrisonburg, Va.  
May 5, 1979

**STOCKER, FEEDER & SLAUGHTER CATTLE:** Good Light Steer Calves 100.00 to 113.50; Medium 95.00 to 100.00; Plain 90.00 and down; Good Heavy Steers 90.00 to 95.00; Medium 85.00 to 90.00; Plain 80.00 and down; Holstein Steers 62.50 to 73.00; Slaughter Steers 73.00 and down; Good Light

Heifer Calves 85.00 to 89.00; Medium 80.00 to 85.00; Plain 75.00 and down; Good Heavy Heifers 75.00 to 79.00; Medium 70.00 to 75.00; Plain 65.00 and down; Slaughter Heifers Not enough to quote; Slaughter Cows 55.00 to 61.50; Utilities 50.00 to 55.00; Cannors and Cutters 45.00 and down; Milk & Stock Cows 925.00 and down; Stock Bulls 80.50 and down; Slaughter Bulls 45.00 to 65.00.

**CALVES:** Veal Calves 124.00 and down; Baby Calves 144.00 and down.

**SHEEP & LAMBS:** Spring Lambs 80.00; Slaughter Ewes 31.50 and down; Stock Ewes 102.00 and down.

**HOGS:** Top 44.95; Heavy 40.50 to 42.50; Sows 31.00 to 39.75; Boars 32.00 to 37.75.

## CURIOUS RED?

SUBSCRIBE TO

ORDER A

"The Red Bloodlines"

Sire Directory

Monthly publication featuring Red sires, Red & White Breeders, Shows & Sales and much more.

Featuring 49 Red sires with pictures, proofs and pedigrees. Valuable guide in sire selection.

12 Issues Only \$3.00

Cost \$1.00



"BRIGHTEN YOUR FUTURE"  
Red & White Dairy Cattle Association  
Box 63L, Crystal Spring, PA 15536  
Phone: 814-735-4221



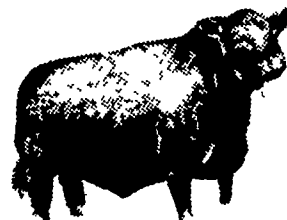
2-9FP

## LEESPORT MARKET & AUCTION, INC.

North end of Leesport

Turn East off Route 61

"WHERE FRIENDS MEET"



BERKS COUNTY'S ONLY WEEKLY  
CATTLE & SWINE AUCTION —  
WEDNESDAY AT 1 P.M.

FARMER'S MARKET Every Wednesday,  
12 NOON TO 9 P.M.



Garden Fresh Fruits & Vegetables - Bakery Fresh Cakes, Pies and Buns - Butcher Fresh Meats & Cheese - Sporting Goods - Clothing - Furniture - Jewelry - Used Items & Collectibles.

PHONE: 215-926-1307

LEROY WEIST & JOHN WEIST, MGRS.

# SPECIAL

# NOTICE

## HAY, STRAW & EAR CORN SALE

AT

# DAVID H. GOOD'S FARM MACHINERY SALE

EVERY WED. AT 12 NOON

ON NORTH MAPLE AVE., LEOLA, PA.  
Home Phone 717-656-8911  
Bus. Phone Wed. Only 717-656-9558

## McCOY CATTLE COMPANY

Profit-minded Livestock Feeders

Market With Mert McCoy

Commission agents for fat cattle, feeder cattle, market hogs and feeder pigs.

LANCASTER STOCKYARDS.

NEXT FEEDER PIG SALE

TUES., MAY 15, 1979 at 1:00 P.M.

Will Be Offering 250-300 Feeder Pigs from Jerry Rutter.

Feeder pig tags delivered to your farm on request.

For information call:

Main Office  
717-397-1411

Hog Division  
717-291-8912

Ed Prosser, Home  
717-259-0988