

Convert Your Pickup To A Dump Truck

★ ECONOMICALLY ★ EASILY ★ PERMANENTLY



Just Press A Button & Tilt — You're Through.

Fits on Ford, GMC, Chevrolet & Dodge
4,000 lb. Capacity

LET YOUR NEW TRUCK DO ALL THE WORK WITH AN EASILY INSTALLED **POWER HOIST**

- Soundly engineered mounting assembly insures safe vertical and horizontal stability.
- Hoists are designed for speedy off-load of construction materials, sand, sod, gravel, cement, feed, fertilizer, grain, etc.
- All hoist components are factory assembled, painted and pre-tested for strength and durability.
- Automatic by-pass valve protects entire system from overload damage.
- Ideal for contractors, ranchers, landscapers, or any light haulers.
- Grease fittings on all pivot points facilitate maintenance for longer life.
- Rattle free, with no change to basic body lines.
- Full warranty by factory.

SPECIAL LIMITED TIME INTRODUCTORY OFFER

\$995⁰⁰ including installation

Special - Tailgate available for unloading grain.

Write or Call Now:

MELLINGER MFG. CO., INC.

R2, WILLOW STREET, PA. 17584
PHONE: 717-464-3318

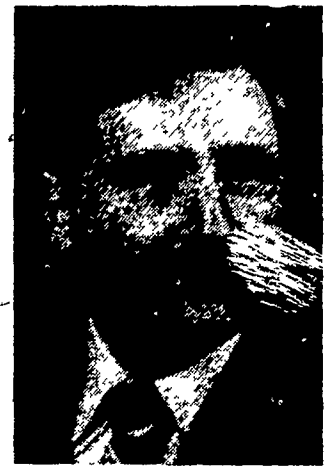
Pennfield appoints two in management posts

LANCASTER - Pennfield Corporation recently appointed two members to management positions, according to Robert B. Graybill, president.

Kenneth T. Greenwood has been named Manager of Feed Production. Formerly a resident of Oklahoma City, Okla., Greenwood earned his B.S. in Agricultural Engineering from North Carolina State University. He has 12 years of management experience with Ralston Purina Company, and was stationed with



Mary Beth Ryan



Kenneth T. Greenwood

their operations in Montana, Colo., Georgia and North Carolina. Most recently he served as production manager for Ralston's Oklahoma City plant. Greenwood is a member of the American Society of Ag Engineers, the Food Science Club, and serves as manager of the Hempfield Youth Association Midget League.

University, she was most recently employed by the Lancaster General Hospital, where she held the post of director of Public Relations for five years. Ryan serves as a member of the Board of the Fulton Opera House, the Citizens Scholarship Foundation of Lancaster County, and United Cerebral Palsy of Lancaster County. She also serves on committees for the Lancaster County Unit of the American Cancer Society and the Red Rose District of the Boy Scouts of America.

Mary Beth Ryan has been named Director of Communications for Pennfield. A graduate of Kutztown State College and Temple



MAY 18, 19, 20, 1979

We will have over 100 booth spaces filled with National & Regional Fire Apparatus, Rescue, Ambulance, Fire Equipment & Novelties Mfgs. & for the first time there will also be a Flea Market on the grounds at

Dutch Wonderland

Rt. 30 East of Lancaster, Pa.

HOOURS: Friday & Saturday 10 a.m.-6 p.m. ★ Sunday - 10 a.m.-4 p.m. Admission \$2.50

SPECIALS of the WEEK

- ★ New 2-60 White tractor..... \$9750
- ★ Used Deutz 5206, only 279 hrs., like new \$7500.
- ★ Roto Boss 802, 8 hp., 5 gears, forward and reverse, 9 position handle, rear cutting tines, List \$919.95 Sale \$785
- ★ 300 gal. Agrotec, complete \$1575
- ★ 2 White 543 grow no-till, complete ... \$5600 F.O.B.

PAUL M. BYERS, INC.

1700 Edgar Ave.
Chambersburg, PA.
717-263-8568

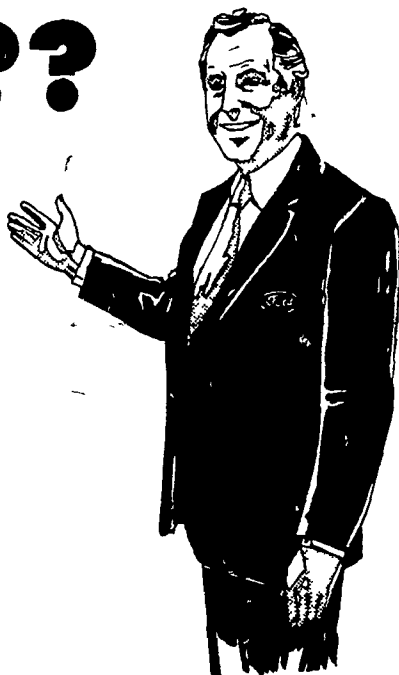
WHITE FARM & GARDEN

DEUTZ PAPEC

Wisconsin Engine Winco Generator

WHY???

ARE MORE AND MORE PEOPLE COMING TO LANCASTER FORD TRACTOR?



★ IS IT BECAUSE OF FORD TRACTORS AND EQUIPMENT?

★ IS IT BECAUSE OF OUR PARTS AND SERVICE?

★ IS IT BECAUSE OF OUR EMPLOYEES ATTITUDE?

★ IS IT BECAUSE OUR PRICES ARE BETTER?

WHY???

I'm Number One At Lancaster Ford



OUR CLAIM TO FAME IS PUTTING IT ALL TOGETHER, MAKING YOU THE CUSTOMER NUMBER ONE!

There is no better time than now to take advantage of the tremendous savings on hay tools.

★ **REBATES** ★ **DEFERRED TERMS**

IN STOCK } • Balers • Mowers
• Rakes • Mower Conditioners



LARRY SAYS

HAVE A HAY-DAY WITH US AT:



LANCASTER FORD TRACTOR, INC.

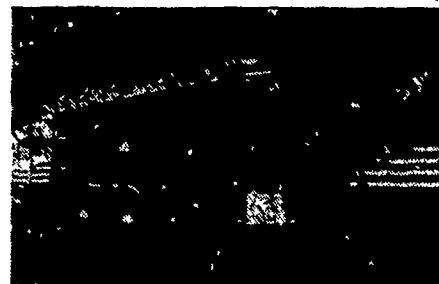
The Friendly Store That Gives You More!
Take Flory Mill Exit off 283 and go ¼ mile toward East Petersburg

1655 Rohrerstown Road — Phone: 717-569-7063

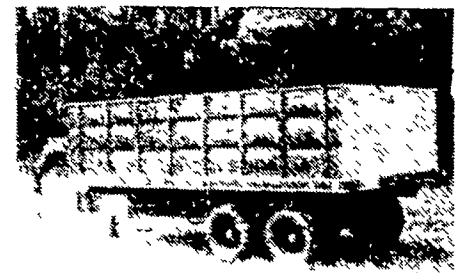
GO

FISHER AND STOLTZFUS TRAILER SALES

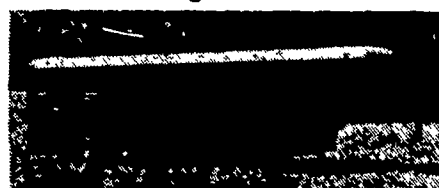
Call 717-768-3832 or 717-354-0723
Located East of New Holland



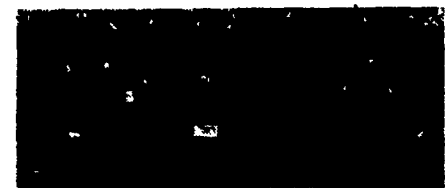
Standard Metal Top Stock Trailer As Shown Above Comes In Lengths Of 14 & 16 Feet



This 16' x 8' Grain Trailer Is Designed To Haul Grain



Standard Livestock Trailer 20' x 6' Trailer Has The 2 Ft. Escape Door



Standard Flat Bed Trailer