

# Lebanon County farm features new concepts

LEBANON — Four Lancaster County farmers from the Lititz and Manheim areas who collectively are spending \$450,000 for a 480-sow feeder pig production unit in Lebanon County, expect to have their venture ready by May 23. Before that takes place, however, there will be an Open House. That's slated for next Thursday and Friday. It will be sponsored by Thomas Farm Systems of Leola, designers and builders of the facility.

The brand new unit features a 480-sow Northco Complex with roof ventilation, stainless steel panel fencing, automatic feeding for gestation, stainless steel slatted floors in the farrowing area and nursery, and a gravity flow manure system.

The investors, who are going under the name of L and L Pig Producers, plan on producing feeder pigs at the facility and will remove them at about 10 weeks of age for finishing at their respective farms. The 480 sows and gilts will be mated

with 24 boars. Breeding stock will be supplied by McClean, Inc.

Two main buildings comprise the production unit. In one, there are four rooms and five nursery rooms. Each farrowing room contains 20 farrowing crates. The nursery has ten pens per room, with a capacity of about 20 pigs per pen.

Featured are automatic floor feeding which allegedly produces faster gains and better feed conversions. The feeders turn on automatically every two hours, even during the night. In fact, there is no such thing as night or day inside the totally enclosed and environmentally controlled unit. Low-level lighting remains constant throughout the time that the pigs are in the building. Bright lights are turned on only during cleaning or maintenance work.

The young pigs are fed only that what they'll clean up, says a spokesman for Thomas Farm Systems. The

manager of the unit will be able to adjust equipment accordingly.

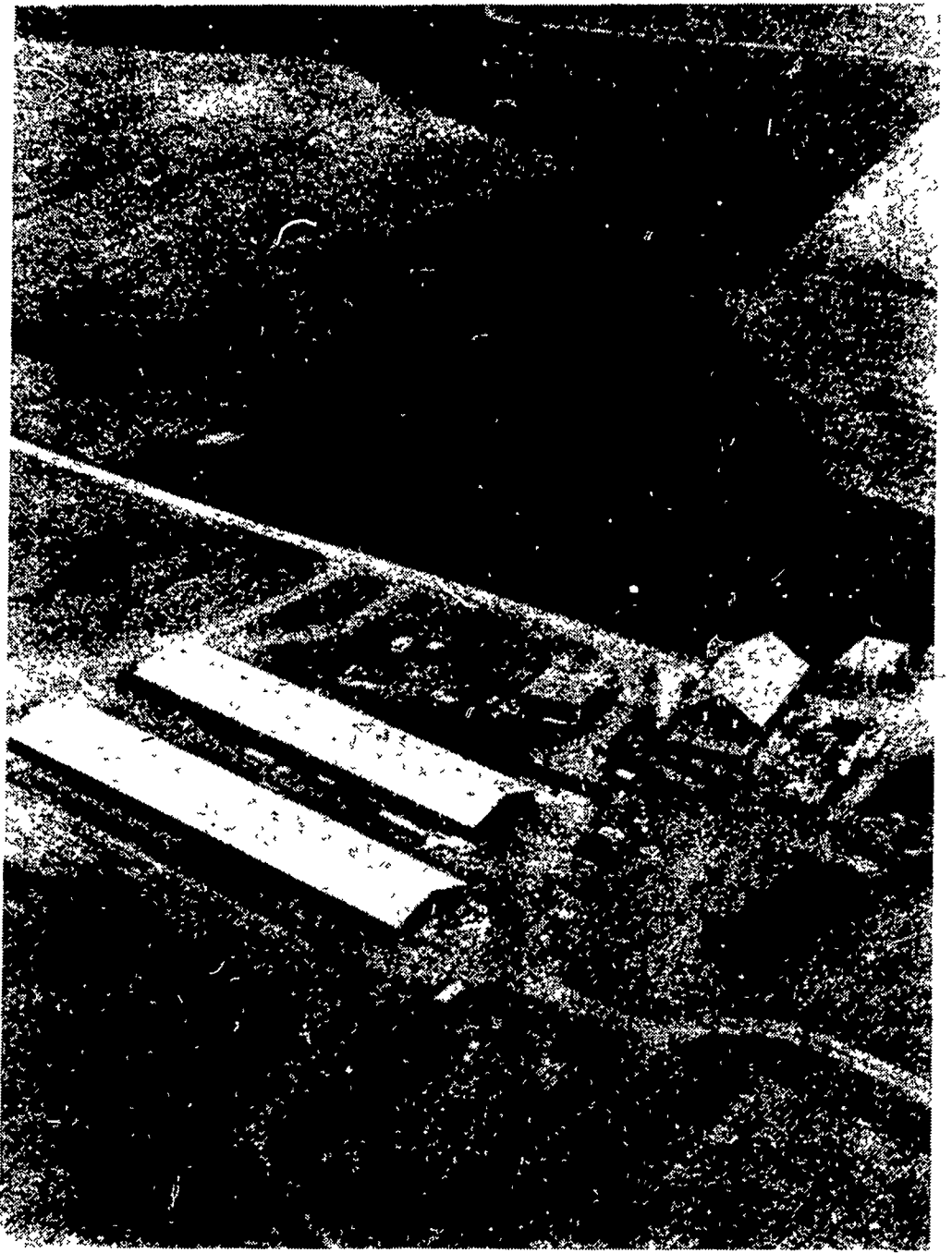
The second building is for breeding and gestation purposes. As in the first house, it will feature stainless steel paneling and slatted stainless steel floors. These parts and the ventilation system are provided by A.R. Woods Mfg. of Luvern, Minn.

The ventilation system features a roof exhaust which is reportedly unique in the industry. In case of possible power outages or malfunction, there is a back up generator. If that fails, there is an "emergency fail safe system" which comes on to enhance the natural flow of air.

To handle the manure, there are shallow pits under all of the animals. The manure flows by gravity to a lagoon where the waste material is aerated. Two 5-horsepower motors provide the energy for the aeration process.

Liquids from the first pond move on to a second lagoon which is said to be capable of supporting aquatic life. Designers of the system say the lagoons are odor free and manure handling will be eliminated.

Interested farmers are invited to see the new feeder pig production unit. L and L Pig Producers is located about five miles north of Lebanon, off of Route 343 on Greble Road. Open House is May 17 from 10 a.m. to 8 p.m. and on May 18 from 10 a.m. to 4 p.m.



Four Lancaster County farmers have invested in this new pig production farm north of Lebanon.

## New 4-H club formed

INTERCOURSE — A new 4-H club has been formed in Lancaster County and it holds its first organizational meeting on May 21 in the Pequea Valley High School vo-ag room. Activities begin at 7 p.m. The high school is located northwest of here along Route 772.

Any youths aged 8 to 19 are

welcome to attend and join the club. Parents are encouraged to share in the experience. For more information, contact either Clair Witwer, Pequea Valley High School vo-ag instructor, 768-8211; Mrs. Sherry Bagshaw, 442-4657; or the Lancaster County 4-H office, 394-6851.

## Goat meeting slated

LANCASTER — The Lancaster County Dairy Goat Club will hold a two-part program this coming Tuesday evening, beginning at 7 p.m. in the Farm and Home Center. One part of the program will be for youths, the other for everyone.

The youth program, slated to get underway at 7 p.m., is open to youngsters aged 8 to 18. At 7:30 the session will turn to feeds and forages. Glenn Shirk, County agent for dairy concerns, is in charge. He can be contacted by calling 394-6851.

## AGRIflow®

3", 4", 5", 6", 8", 10" AND 12" TUBING



**HEAVY GRADE TUBING  
EXCEEDS SCS SPECIFICATIONS.**

**WE STOCK ALL PIPE & FITTINGS  
FOR TILE OUTLET TERRACES.**

**COCALICO EQUIPMENT CO.**



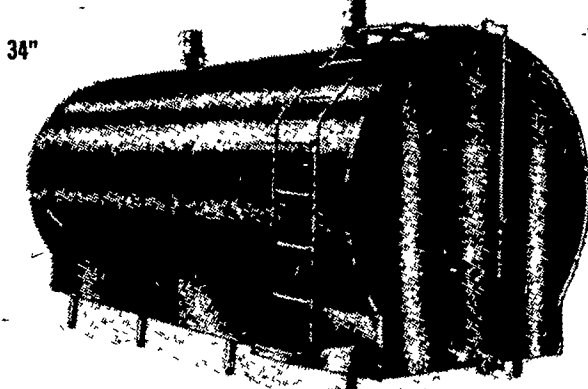
**DRAINAGE &  
EXCAVATING**  
RD #3, DENVER, PA. 17517  
(215) 267-3808



### "Where Performance Speaks Louder Than Words"



*The Diplomat*



*The Ambassador*

**THE LOWEST POURING  
HEIGHT ON THE  
MARKET TODAY - 34"!**

• PLANNING LAYOUTS  
• SALES • INSTALLATION  
• SERVICE

**USED TANKS**

1 - 1500 gal. Mueller Hi-Perf SOLD	600 gal. Mojonnier vacuum	D-2 300 gal. Girton
1 - 940 gal. GisoldD-5	(2) 500 gal. Mojonnier vacuums	735 gal. Sunset
D-4 500 gal. Girton	800 gal. Dari-Kool, direct expansion	625 gal. Sunset
D-2 500 gal. Girton	500 gal. Esco Ice Bank - \$300	
500 gal. Mueller w/tank washer		

**NEW PRICE SPECIAL** 1000 gal. Dari-Kool direct expansion.  
If in need of 1000 gal. tank check this one out.

★ Service On All Makes Of Milk Tanks  
★ All Work Guaranteed.

## SHENK'S FARM SERVICE



PAYMENT PLAN  
AVAILABLE

501 E. WOODS DRIVE  
PHONE: (717) 626-1151

LITITZ, PA. 17543

Bulk Tanks • Therma•Stor — After 5 P.M. - Call Titus Burkholder - 717-859-1620  
Our Service Trucks Are Radio Dispatched 24 Hr. Service Offered

