

## Public Sales Register

Closing Date - Monday, 5:00 P.M.  
of each week's publication

**SAT. MAY 19 - 11:00 A.M.** Public Sale of Valuable Real Estate, Household Goods and Antiques. Located along Rt. 372 between Atglen and Parkesburg, Chester Co., PA. Terms by Christian L. Umble, Auctioneer John Umble.

**MON. EVE. MAY 21 - 6:00 P.M.** Public Sale of Real Estate, Antiques, Household Goods & Tools. Located at 1017 Lime Valley Road, Strasburg Twp., Lanc. Co., Pa. (1 mile north of Hessdale; 3 miles west of Strasburg, 2 miles south of Lampeter). Sale by Larren E. Pickel. Howard Shaub, Auctioneer

**WED. MAY 23 - 7 P.M.** Special Feeder Sales at Four States Livestock Sales, Inc in Hagerstown, MD. For more information or to have your cattle advertised call Hagerstown 733-8120.

**WED. MAY 23 - 5:30 P.M.** Public Sale of Antiques, Held at Lemasters Community Center, Lemasters, Pa. 7 miles west of Chambersburg off Rt. 416, 3 miles northeast of Mercersburg.

**WED. MAY 23 - 7:00 P.M.** Public Sale of Farm Machinery, Truck, Cars, Horse Trailer, Held at Redding Auction Service, located 3 miles north of Gettysburg on Rt. 34 Paul V. Davis, II, Owner C David Redding Auctioneer

**THURS EVE MAY 24 - 5 P.M.** Public Sale of Shop Equipment, Butcher Equipment, and Antiques located in Adams County, on Route 30, New Oxford, Pa Square turn North at C.C.N.B Bank 2 miles New Chester Road Sale by Mrs. Pauline

Milhimes, Owner, C R Slaybaugh, Auctioneer

**THURS. MAY 24 - 9:00 A.M.** Public Sale of Antiques, Household Goods, Farm Equipment, Truck and Boat. Located along Prospect Rd., RD 1, Washington Boro, Manor Twp., Lancaster Co., PA (Take Rt 999 about 5 miles west of Millersville to Prospect Rd., turn right, go about 1 mile to sale. Sale by Mr & Mrs. Warren N Heisey. Howard Shaub and Roy C Probst Auctioneers.

**THURS. MAY 24 - 8:00 P.M.** Public Sale of Rossman Brothers Milking Herd. Held at the Farm on McHenry Valley Rd., 3 miles west of Almond, 10 miles west of Hornell, Auction arrows off Rt 21 Sale Manager and Auctioneers Victor Kent and Sons

**FRI. MAY 25 - 1 P.M.** Public Sale 150 Registered & Grade Holstein Heifers Fred & Mike McCartney, Dry Run, Pa

**FRI MAY 25 - 2 P.M.** Public Sale of Valuable Real Estate & Building Lots, 20 Acres More or Less Located along Rt 340 & Meeting House Rd., 1/2 mile west of White Horse, 16 miles east of Lancaster, 4 miles north of Gap, Salisbury Twp., Lancaster Co., Pa Terms by Edward S Glick & Linda K Glick. Auctioneers Robert E. Martin & Son & Frank L Steller.

**FRI MAY 25 - 5:00 P.M.** Farm and Household Goods Auction for Carlton Greene Held at the Farm located at corner of Kenyon Rd. and Rt 21, 4 miles north of Andover, 4 miles south of Alfred, NY Victor Kent and Sons Auctioneers and Sale Managers

**SAT MAY 26 1:00 A.M.** Consignment Horse Sale at Keister's Middleburg Auction Sales, Inc Rt 522 3 miles East of Middleburg, 5 miles West of Selinsgrove Pa Don & Walt Keister, Owners Larry Long, Auctioneer

**SAT. MAY 26 - 10 A.M.** Annual Spring Heifer Sale at New Holland Sales Stables, Inc., New Holland, Pa For more information contact Abe Diffenbach or Norm Kolb

**SAT. MAY 26 - 10 A.M.** Public Sale of Farm Equipment, Tools, Trucks, Race Horses, Carts, Tack located in Adams County, on Route 30, New Oxford, Pa Square turn North at C.C.N.B Bank 2 miles New Chester Road. Sale by Mrs. Pauline Milhimes, Owner, C R Slaybaugh, Auctioneer

**SAT. MAY 26 - 10 A.M.** Consignment Auction Bethel, Pa. Ebersole & Shoop Auctioneers, 930 Cornwall Rd., Lebanon, Pa 17042 717-273-5408

**SAT. MAY 26 - Grade Heifer** sale at New Holland Sales Stables New Holland, PA

**SAT. MAY 26 - 10 A.M.** Public Sale Antiques & Collectibles, Coins, Household Items, Farm Machinery Located approximately 1 1/2 North of Gratz, Pa. on the Gratz to Erdman Rd Estate of Tessie V Miller Anna Lebo, Mary C Troxell, Matilda Bordner, Executrices. Lee D Dockey Auctioneer

**SAT. MAY 26 - 9:00 A.M.** Public Sale of Real Estate, Bank Stock, Antiques, Household Goods and Tools of the Olevia Bahn Hartman Estate Located about 2 miles west of Exit 3, Loganville Exit of Rt 83 and approx 1/2 mile south of Jacobus off Old Rt 111 along Beck Rd., in Springfield Twp York Co., PA Russell, Paul and Ruth Bartman Executors, Robert L Sechrst Auctioneer

**SAT MAY 26 - 10:00 A.M.** Public Sale of Real Estate, Antiques, Household Goods, Lots of Tools & Guns Located at

1624 Butler Road, Manheim Twp Lanc Co., PA (take Rt 23 about 3 miles east of Lancaster or 1 block east of Eden traffic light, turn left, onto Butler Road) Sale by Mrs J Roy Brian Howard Shaub, Auctioneer

**SAT MAY 26 - Public Sale of Valuable Real Estate** Located at 322-324 Arch St in borough of Ephrata, Lanc Co., Pa Terms by Irvin C & Mary K Messner Auctioneers Lester O Weaver & Barry D Wanger

**SAT MAY 26 - 9:30 A.M.** Public Sale of 130 acre Farm, Farm Machinery, Vehicles, Household Goods and Antiques. Located at Rt 2, Hummelstown, Dauphin Co., PA

Turn south off Rt. 22 onto Rt. 39 for 1 1/2 miles to Hanoverdale Church of the Brethren and turn left onto Devonshire Rd and continue to farm or Take Rt. 39 North from Hershey to the church and turn right continue to the farm, approx 3 miles North of Hershey, 12 miles east of Harrisburg or 3 miles south of I-81 Conditions by Lee K Sauffley Harry H Bachman Auctioneer.

**SAT MAY 26 - 9:30 A.M.** Public Sale of Antiques & Collectibles Held at 606 E Grand Ave., Tower City, PA (Rt. 209) next to the Post Office, on the premises of the Former Hawk Pharmacy Ellen L Rose Owner. George N. Deibert Auctioneer.

**MON MAY 28 & TUES. MAY 29** - Large Two Day Sale of Farm Equipment at Marion, PA. Ralph W. Horst, Sale Manager.

**TUES. MAY 29 - 10:00 A.M.** Public Auction of Farm and Orchard Equipment, Truck, ATV, located about 4 miles north of Krumsville and Rt 22, along Rt 737 in the village of Stony Run, Berks Co., PA. Sale by Harvey & Annie Miller. Ralph Zettlemoyer Auctioneer.

**THURS. MAY 31 - 5:30 P.M.** Public Auction Located in back of Keim's Service Station along Rt 325 at Gold Mine Cross Roads, 1 mile south of Tower City, across st from Star Craft plant Ralph A & Katherine P Keim Owners George Deibert Auctioneer

Royal Charolais co.

TWO

GREAT SALES  
IN ONE

Saturday, May 19, 1979  
Greensburg, Pa.

★ The Royal Spring All-Polled Bull Sale ★  
30 PULLED BULLS

PERFORMANCE TESTED CLASSIFIED

★ The Royal Female Sale ★  
35 FEMALES

3-in-1 Packages Open Heifers Bred Females Show Heifers  
Featuring the services and progeny of the only two Polled National Champion Bulls

Sir Sam 1st Expectation

Several females from our show string will be sold in our May sale.

Write or call for a catalog:

Sale Manager: Buzz Garey - Box D  
100 Walnut Lane, Morrisville, PA. 19067  
(215) 295-6664

Farm Office:

Doug Kayser, Manager  
(412) 836-1802

W. LOGAN DICKERSON, OWNER  
P.O. BOX 160  
YOUNGWOOD, PA. 15697

Royal Charolais co.

(412) 925-3585

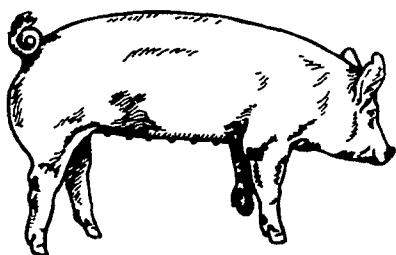
HOME OF SIR SAM

# BRED GILT SALE

SATURDAY,  
JUNE 16, 1979

1:30 P.M.

Located 8 miles North of Myerstown on Rt. 501 & 1 mile South of U.S. 22 on Rt. 501 at Bethel, Pa. Turn West at Bethel School to second farm on left.



50 Head more or less, 3 way cross bred Gilts, Yorkshire, Hampshire and Duroc. Gilts are bred to purebred Yorkshire out of Ivy Hill Farms, Smithburg, MD. Pigs are vaccinated for Erysipelas, wormed and treated for lice. No out side hogs will be sold at this sale, they are all home raised. Also two 3 way cross boars, breeding age.

Sale Conditions by  
**HENRY H. MARTIN**  
717-933-4279

Auctioneer Alvin Horning

## AUCTION SALE SATURDAY, MAY 26

10:00 A.M.

Bethel, Pennsylvania

TRUCKS, TRAILERS,  
TRUCK TRACTORS, DUMPS,  
FLATS, GRAIN TRAILERS,  
VANS, TOOLS

### TRUCK TRACTORS

PARTIAL LISTING: 1974 MACK R700, ntc-290 Cummins, Rebuilt, Sleeper, Wet Line 4x4 Air Shift, Tag Axle, 134-C White Rea; 1969 FREIGHTLINER 335 Cummins, rto-9513 Reyco Susp, Full Screw; R-600 MACK, V-8 with 10 sp. Road Ranger, t/a, 1000x22 Rubber; INTERNATIONAL c.o.e., Non-sleeper, s/a, 220 Cummins, 10 sp. Road Ranger, 1000x20 Rubber; 1970 DIAMOND REO conv., 318 Detroit, 13 sp., 10 sp. Overdrive, Heavy Duty 54,000 lb. Rears, 1000x22 Rubber; 1967 G.M.C. c.o.e. Sleeper, 318 Detroit, rto 915, Power Steering, Reyco Susp. 38000 lb. Rears, t/a, 1000x20 Rubber; 1967 G.M.C. c.o.e. Sleeper, 318 Detroit, rto 915, Hendrickson Susp., 38000 Rears, t/a, 1000x20 Rubber.

### ROLL BACK TRUCKS

1973 INTERNATIONAL with Schwartz Roll Back Bed & Winch, 900x20 Tires; 1971 FORD f-750 with Chevron 3 Car Roll Back Bed & Winch, 900x20.

### FOUR WHEEL DRIVE PICK-UP

1971 CHEVROLET 4 WD, 3/4 Ton Pick-up, 350 V-8, 4 sp., 16" Wheels, Snow Tires.

### TRAILERS

1971 TEMPT 45 Ft. Van Trailer, Sliding Tandem, Swing Doors; 35 Ft. Single Axle Grain Trailer; TRAILMOBILE 40 Ft. Van Trailer, Inspected, Roll Doors, 20" Rubber, Fixed Tandem; 35 Ft. Storage Van.

### MISC. ITEMS

3 NEWAY Tag Axles (1 has air lift); Set of 22" BUDD Wheels; Tires and Wheels (8:25x20 & 900x20); 2 Fiberglass Hoods 200 I.H.; Tire Machine; 2 Floor Jacks, Air Car Bumper Jack; House Jack; HYD Press with Motor; 10 Ton Chain Hoist; HYD Cylinders; Chain Saw; 12" Circular Metal Cutting Machine; Misc. Tires of various sizes; many more items to numerous to mention.

THIS IS JUST A PARTIAL LISTING...MORE CONSIGNMENTS BY SALE DATE.

DIRECTIONS: 40 Miles West of Allentown on I-78; Get Off at Bethel Exit (Exit 3); Sale Site is 1/2 Mile East of Bethel along Old Route 22.

Ebersole & Shoop,  
Auctioneers

Information Call:  
Sale Manager  
NORMAN EBERSOLE  
(717) 867-2771  
(717) 273-5408

Write or Call for Descriptive Catalog.

930 Cornwall Road  
Lebanon, PA 17042

(717) 273-5408 (717) 534-2030