

# Angus outlook conference slated for July 1-3

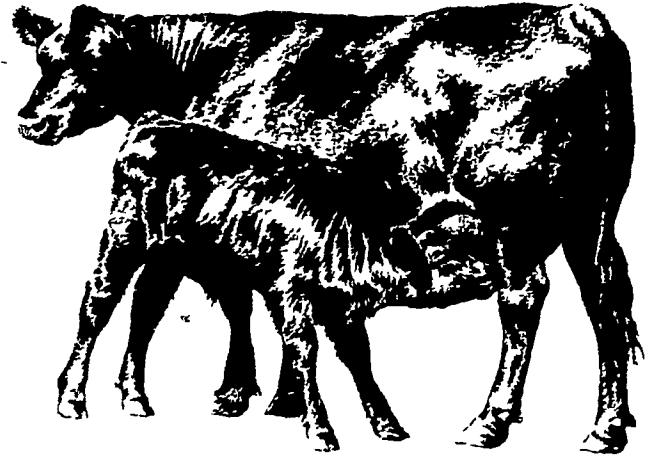
ST. JOSEPH, MO.—Frame size in beef animals affects both growth rate and carcass desirability, research at Colorado State University shows. The affects of frame size on beef cattle per-

formance and what it means to cattle breeders will be discussed by Dr. Art Litton of the Colorado State University staff and Jim Gibb, research assistant, in a special presentation at the

1979 National Angus Outlook Conference July 1, 2, and 3 in Fort Collins, Colo.

Results of research on frame size currently being conducted by Jim Gibb will be made available at the

Conference, Dr. Litton reports. The current project, a follow-up on research done about a year ago, is being conducted on a larger number of cattle and should provide even more accurate



information, Litton said.

**A Saleable Product**  
The presentation on frame size will be one of three workshops set for Monday afternoon, July 2, titled "Production of A Saleable Product." The workshops will be conducted by the C.S.U. staff using the University Angus herd and farm facilities. The other

two workshops will be on "Identifying Superior Cows Through Angus Herd Improvement Records" by Dr. Robert Taylor, and Ken Knievel, and on "Using Results from the National Sire Evaluation Program" by Dr. Bernard Jones, head of the C.S.U. animal science department.

(Turn to Page 118)

## FROM THE TRACTOR SPECIALIST CASE Low Profile - High Value Tractors

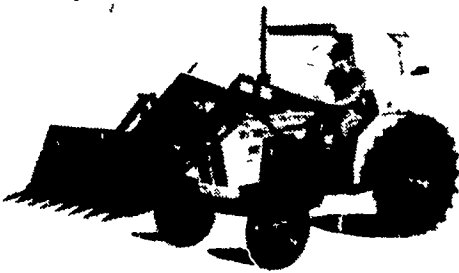


**Steady, sturdy, trusted workhorses**  
— 43 to 80 PTO hp\* (32 to 59 kW)

If you want a lot for your tractor dollar and must have dependability and insist on versatility you can satisfy all requirements with our low profile line

You can choose from five useful power sizes work with a tough fuel-easy high torque engine, meet any job or soil situation with the standard 12-speed synchromesh transmission choose optional range power shift on models 1210 and 1410, have 4-wheel drive (on models 995 1210 and 1410) if you want it

You've got a hundred jobs to handle. Case is doing something about it with these rugged low profile workers



**We're parts and service specialists, too.**

As the Tractor Specialist, your Case dealer serves you from a parts inventory designed for speed and efficiency. Our dealers are also pledged to provide fast expert handling of Case tractor service needs

For productive field power from the company that builds nothing but tractors for the farm, see your nearby Case dealer. Test a new low profile tractor. Find out why they're so highly regarded as first tractor or favorite helper on so many busy farms

CASE LOW PROFILE TRACTORS					
MODEL	HP*	PTO HP*	HP*	HP*	HP*
43	32	32	32	32	32
53	39	39	39	39	39
58	43	43	43	43	43
65	48	48	48	48	48
80	59	59	59	59	59

Official test

**Case builds nothing but tractors for the farm.**

doing something about it.



- PARTS • SERVICE • RECONDITIONED TRACTORS
- CONVENIENT FINANCING • LEASING • RENTALS

**DEPENDABLE MOTOR CO.**  
East Main Street  
Honey Brook, PA  
(215) 273-3131

**STOFFER BROS., INC.**  
1066 Lincoln Way West  
Chambersburg, PA  
(717) 263-8424

**C. H. WALTZ SONS, INC.**  
RD1, Cogan Station, PA  
(717) 435-2921

**CLAIR J. MYERS**  
Lake Road R1  
Thomasville, PA  
(717) 259-0453

**PAUL SHOVER'S, INC.**  
35 East Willow St.  
Carlisle, PA  
(717) 243-2686

**PEOPLES SALES & SERVICE**  
Oakland Mills, PA  
(717) 463-2735

**NEVIN N. MYER & SONS, INC.**  
RD1, Chester Springs, PA  
(215) 827-7414

**T & T SUPPLY, INC.**  
RD5, Danville, PA  
(717) 275-0927  
2 mi. S. off Rte. 54

**BINKLEY & HURST BROS.**  
133 Rothsville Station Rd.  
Lititz, PA  
(717) 626-4705

**ZIMMERMAN'S FARM SERVICE**  
Bethel, PA  
(717) 933-4114

**A. L. HERR & BRO.**  
312 Park Ave  
Quarryville, PA  
(717) 786-3521

**E. W. BILEWICZ EQUIP., INC.**  
Elmer Rd., Richwood, NJ  
(609) 881-2692

**C. & P. FULTZ EQUIP.**  
RD 1,  
Spring Mills, PA  
(814) 422-8805

**EDWARDS FARM EQUIP.**  
291 West Moorestown Road  
(Rt. 512 Clearfield)  
Nazareth, PA  
(215) 759-0240

**PONIATOWSKI BROS. EQUIP.**  
Rt. 31 At Church St.  
Flemington, NJ  
(201) 782-3514

**BAER'S GARAGE INC.**  
2407 Marsh Pike  
Hagerstown, MD  
(301) 733-8226

### Lancaster County Government has \$30 million of your taxes.

**Vote for Esther G. Holder to manage it.**

That's a lot of your money. It takes a person schooled in commerce and experienced in business administration to manage it. It takes Esther G. Holder, Republican candidate for Lancaster County Treasurer. Vote for her.



Vote for

**ESTHER G. HOLDER**

County Treasurer  
**Republican**  
Ballot Position 25-A

Paid for the Republican Primary Committee of Lancaster County  
Robert L. Ressler, Treasurer

**FRESH COWS EVERY WEDNESDAY IS SPRINGERS**



**DAIRY DAY**

**AT NEW HOLLAND SALES STABLES, INC.**  
New Holland, PA

If you need 1 cow or a truck load, we have from 100 to 200 cows to sell every week at your price. Mostly fresh and close springing Holsteins.

Cows from local farmers and our regular shippers including Marvin Eshleman, Glenn Fite, Kelly Bowser, Bill Lang, Blaine Hoffer, Dale Hostetter, H.D. Matz, and Jerry Miller.

**SALE STARTS - 12:00 SHARP**

Also Every Wednesday,  
Hay, Straw & Ear Corn Sale - 12:00 Noon.

All Dairy & Heifers must be eligible for Pennsylvania Health Charts.

For arrangements for special sales or herd dispersals at our barn or on your farm, contact:

Abram Diffenbach, Mgr.  
717-354-4341

OR

Norman Kolb  
717-397-5538

**HEIFERS**

**BULLS**